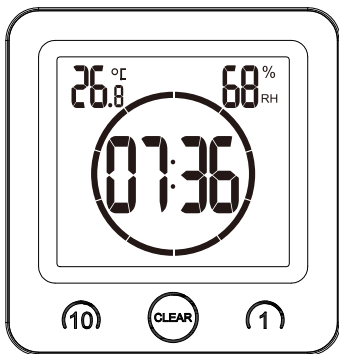


Shower Clock with Humidity and Temperature

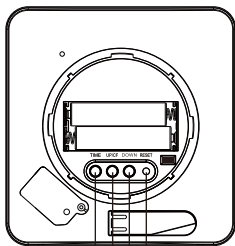
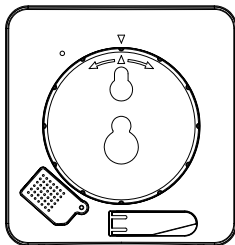
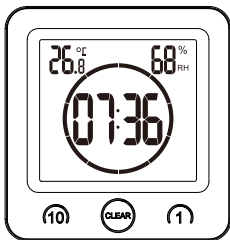


We Thank You for Your Purchase of Baldr Shower Clock with Humidity and Temperature. It has Been Designed and Constructed Using Innovative Components and Techniques to Enable the Perfect Display of Time and Temperature by this Device. Please Read the Instructions Carefully to Become Familiar with The Properties and Functions, Before You Use the Unit.

For the start-up of this device you require: 2xAAA Batteries

OVERVIEW

MAIN UNIT

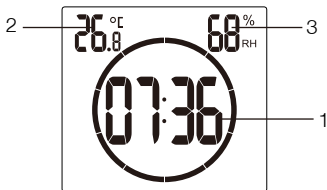


1 2 3 4

- 1.TIME
- 2.UP/CF
- 3.DOWN
4. RESET

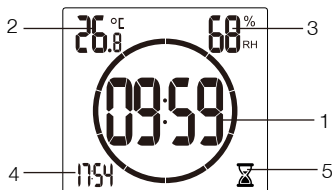
LCD SCREEN DISPLAY

Time Display Mode



1. Time Display
2. Temperature
3. Humidity

Timer Display Mode



1. Timer
2. Temperature
3. Humidity
4. Time
5. Timer Indicator

FEATURES

1. Waterproof for water splashes
2. Easy set timer by touch buttons on front
3. Time display in big digits
4. 12/24 hours selectable
5. Indoor temperature display with C / F selectable.
6. Indoor temperature range: 32 °F ~ 122 °F (0 °C ~ +50 °C)
7. Indoor humidity display
8. Humidity range: 15%~95%

GETTING STARTED

1. Twist and lift the back cover.
2. Insert 2x AA batteries matching the polarity (+and-).


TIME SET

1. Press and hold "TIME" key to enter into time setting.
2. The figure to be set will be flashing.
3. Press "UP/CF" key or "DOWN" key to adjust the data; hold "UP/CF" key or "DOWN" key will quickly adjust the data.
4. Press "TIME" key to confirm and go to next setting.
5. The setting order is: Minute→Hour→Exit.

- When setting time, if no operation within 15 seconds, it will save the current data and exit setting.
- For 12/24H, press "TIME" key on normal display mode to make a selection.

Note: On normal time display mode, press the "DOWN" key can turn on/off the key tone.

TIMER SET

- On normal time display mode, touch the "10" or "1" key to set desired timer time. For example, when desired timer time is 5 minutes, you can just press "1" key for 5 times. Then the timer time will display inside the circle on screen. While the current time display is shift to the left down corner. And when timer working, there will be a signal  flashing on the right down corner of screen.
- Press and hold the "10" or "1" key will quickly add the data. The max timer time is 99 minutes.
- When setting timer time, touch "Clear" key will clear the timer time and return to normal time display mode.
- When setting timer, if no operation within 3 seconds, the timer will start with a 'Bi' sound. And the timer time will display inside the circle on screen.
- When timer working, press "Clear" key will clear the timer and return to normal time display mode with a 'Bi' sound.
- When timer ends, there will be 'BiBi' sound for 3 minutes' alarming. Touch the "Clear" key to stop alarm sound.

TEMPERATURE DISPLAY

- The indoor temperature will display automatically after power on.
- Press "UP/CF" key to switch $^{\circ}\text{C}$ / $^{\circ}\text{F}$
- Temperature range: $32^{\circ}\text{F} \sim 122^{\circ}\text{F}$ ($0^{\circ}\text{C} \sim +50^{\circ}\text{C}$)

HUMIDITY DISPLAY

1. The indoor humidity will display automatically after power on.
2. Humidity range: 15%~95%.

POSITIONED METHODS

The bathroom clock can be positioned in 3 ways as desired.

- A. Pull out the table stand from the back of the clock, and place on table or desk as desired.
- B. Hang on the wall by hanging hole
- C. Attach to the smooth place with the strong suction cup.

RESET

1. Press "RESET" key to return to the default settings.

PRECAUTIONS

- Do not clean any part of the product with benzene, thinner or other solvent chemicals. When necessary, clean it with a soft cloth.
- Never immerse the product in water. This will damage the product.
- Do not subject the product to extreme force, shock, or fluctuations in temperature or humidity.
- Do not tamper with the internal components.
- Do not mix new and old batteries or batteries of different types.
- Do not mix alkaline, standard or rechargeable batteries with this product.
- Remove the batteries if storing this product for a long period of time.
- Do not dispose of this product as unsorted municipal waste. Collection of such waste separately for special treatment is necessary.

WARRANTY

- BALDR provides a 1-year limited warranty on this product against manufacturing defects in materials and workmanship.
- Warranty service can only be performed by our authorized service center. The original dated bill of sale must be presented upon request as proof of purchase to us, or our authorized service center.
- The warranty covers all defects in material and workmanship with the following specified exceptions:(1) damage caused by accident, unreasonable use or neglect (including the lack of reasonable and necessary maintenance); (2) damage occurring during shipment (claims must be presented to the carrier); (3) damage to, or deterioration of any accessory or decorative surface;(4) damage resulting from failure to follow instructions contained in your owner's manual.
- This warranty covers only actual defects within the product itself, and does not cover the cost of installation or removal from a fixed installation, normal set-up or adjustments, claims based on misrepresentation by the seller or performance variations resulting from installation-related circumstances.
- To receive warranty service, the purchaser must contact with BALDR nominated service center for the problem determination and service procedure.
- Thank you for your choice of BALDR products!

BALDR

www.baldr.com

service@baldr.com