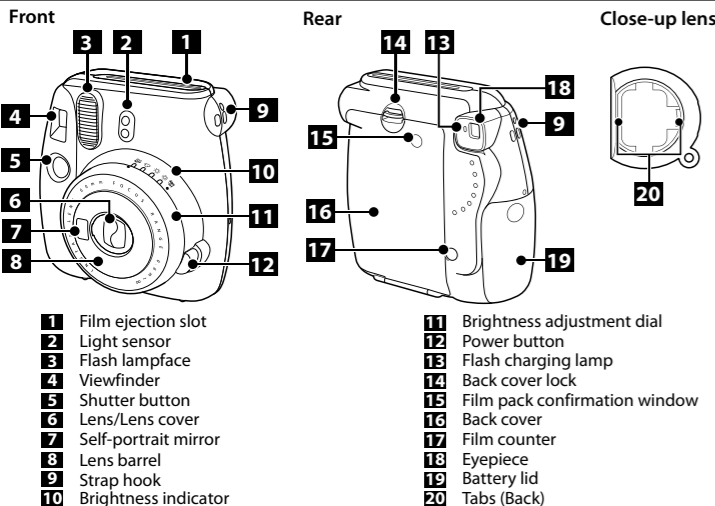


FUJIFILM instax mini 9 INSTANT CAMERA

CPL10B112-101

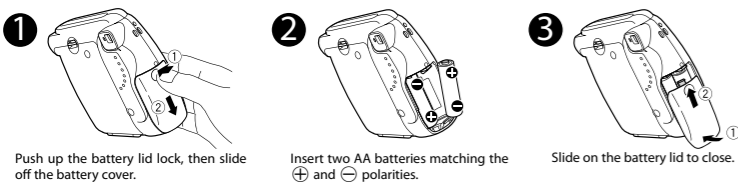
Parts Name



- | | |
|-------------------------|----------------------------------|
| 1 Film ejection slot | 11 Brightness adjustment dial |
| 2 Light sensor | 12 Power button |
| 3 Flash lampface | 13 Flash charging lamp |
| 4 Viewfinder | 14 Back cover lock |
| 5 Shutter button | 15 Film pack confirmation window |
| 6 Lens/Lens cover | 16 Back cover |
| 7 Self-portrait mirror | 17 Film counter |
| 8 Lens barrel | 18 Eyepiece |
| 9 Strap hook | 19 Battery lid |
| 10 Brightness indicator | 20 Tabs (Back) |

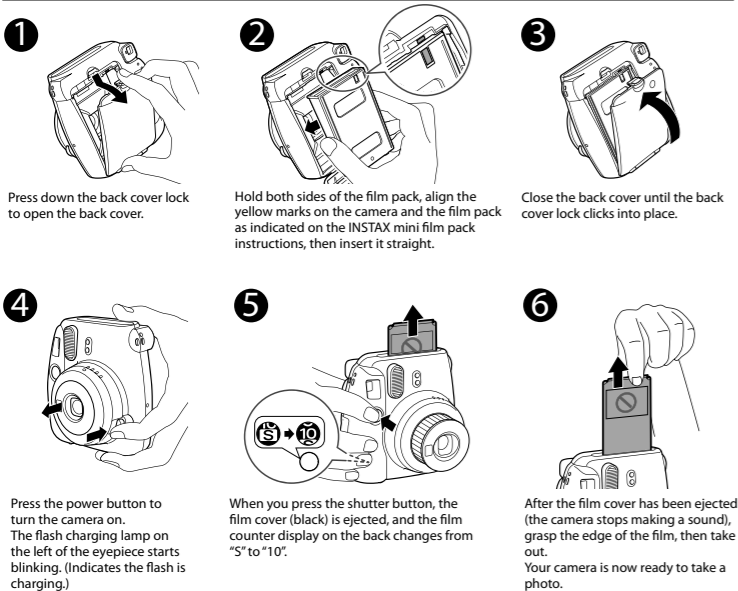
Inserting Batteries

- Caution**
- Use new alkaline batteries of the same brand/type only (AA only).
 - Do not use any batteries other than alkaline batteries.
 - Replace both batteries in the following cases:
 - When the red lamp on viewfinder lights
 - When no lamp lights or blinks even though the power is turned on
 - About 100 pictures (roughly 10 packs of INSTAX mini film) can be taken with new batteries.
 - The battery performance may be reduced when it is cold. In this case, warm up the batteries to room temperature before using this camera.
 - Use the supplied batteries for validation.

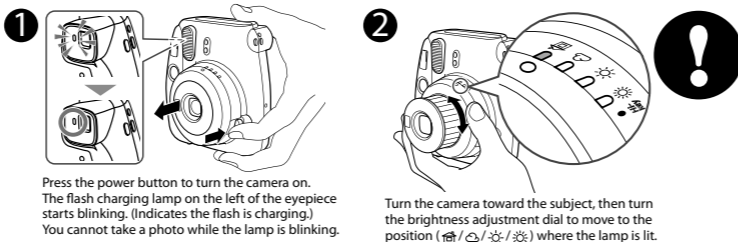


Loading the INSTAX mini Film Pack

- Caution**
- Make sure that the batteries are installed before loading the film pack.
 - Avoid direct sunlight when loading the film pack.
 - Do not use any film other than FUJIFILM INSTAX mini film.
 - When you load the film pack, never press the two rectangular holes on the back.
 - Do not open the back cover until you have used up the film; otherwise, the rest of the film is exposed and turns white. The film can no longer be used.**
 - Never use a film pack beyond its shelf life; otherwise, it may damage the camera.
 - For details, refer to the instructions and warnings on FUJIFILM INSTAX mini film.

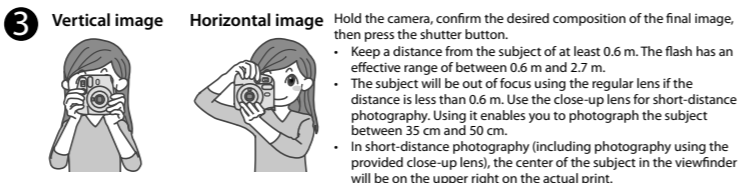


[IMPORTANT] Taking Pictures

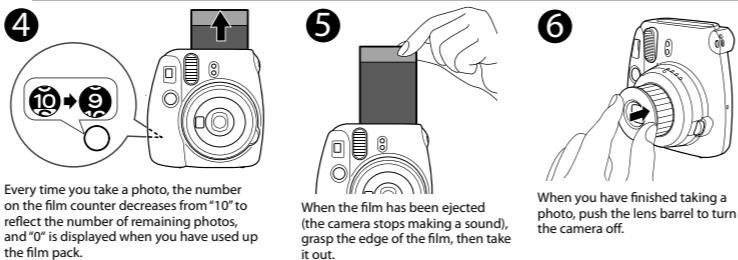


Press the power button to turn the camera on. The flash charging lamp on the left of the eyepiece starts blinking. (Indicates the flash is charging.) You cannot take a photo while the lamp is blinking.

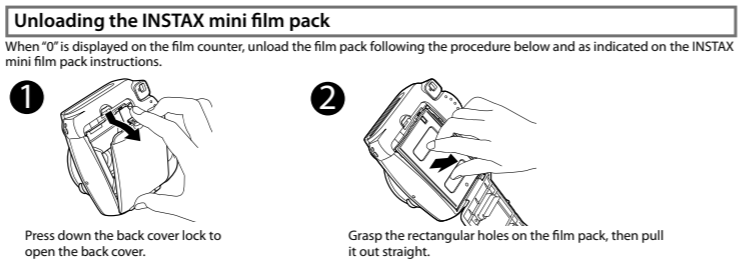
Turn the camera toward the subject, then turn the brightness adjustment dial to move to the position (☀/☁/☁/☁) where the lamp is lit.



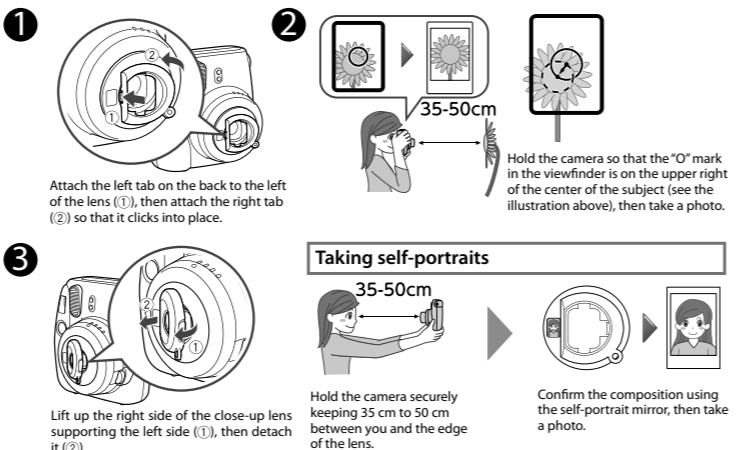
- Vertical image** **Horizontal image**
- Hold the camera, confirm the desired composition of the final image, then press the shutter button.
- Keep a distance from the subject of at least 0.6 m. The flash has an effective range of between 0.6 m and 2.7 m.
 - The subject will be out of focus using the regular lens if the distance is less than 0.6 m. Use the close-up lens for short-distance photography. Using it enables you to photograph the subject between 35 cm and 50 cm.
 - In short-distance photography (including photography using the provided close-up lens), the center of the subject in the viewfinder will be on the upper right on the actual print.



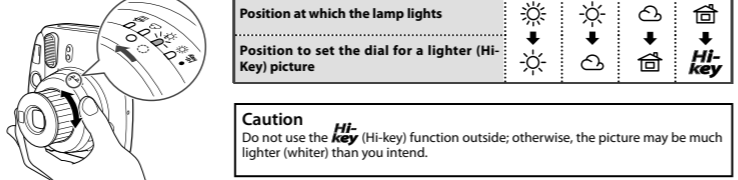
- Caution on holding the camera**
- For horizontal image, hold the camera with the flash lampface at the top.
 - Do not take pictures where flash photography is forbidden.
 - Be careful so that your fingers or the strap do not cover the light sensor, flash lampface, flash, lens, or film ejection slot.
 - Do not grasp the lens barrel when positioning the camera; otherwise, the finished print may not look as expected.
 - Look into the viewfinder so that the "0" mark appears in the center.
 - Be careful not to touch the lens surface when you press the shutter button.
- Unloading the INSTAX mini film pack**
- When "0" is displayed on the film counter, unload the film pack following the procedure below and as indicated on the INSTAX mini film pack instructions.
- Every time you take a photo, the number on the film counter decreases from "10" to reflect the number of remaining photos, and "0" is displayed when you have used up the film pack.
- When the film has been ejected (the camera stops making a sound), grasp the edge of the film, then take it out.
- When you have finished taking a photo, push the lens barrel to turn the camera off.



- Using the Close-Up Lens**
- You can photograph objects close-up, and can photograph yourself using the self-portrait mirror.
- WARNING**
- Do not look through the close-up lens at the sun or other strong light. Blindness or vision problems could result.
- Caution**
- Do not leave the close-up lens in places exposed to strong sunlight. Personal injury or fire could result if the lens should accidentally concentrate the sunbeams on an object or a person.
 - Switch off the camera before you attach/detach the close-up lens.
 - Never turn the close-up lens when you attach/detach it; otherwise, the tabs on the back may be broken.**



- [IMPORTANT] Taking a lighter (Hi-Key) picture**
- This camera automatically determines an appropriate brightness for taking any given picture, and informs you by lighting the corresponding lamp. To take a lighter (Hi-Key) picture, set the position of the brightness adjustment dial to the position of the mode darker than the mode for which the lamp on the dial lights.



SPECIFICATIONS	
Film	FUJIFILM INSTAX mini film
Picture Size	62 mm x 46 mm
Lens	2 components, 2 elements, f=60 mm, 1:1.27
Viewfinder	Real image finder 0.37x with target spot
Shooting range	0.6 m and beyond
Shutter Speed	1/60 sec.
Exposure Control	Manual switching system (LED indicator in exposure meter)
Film Feeding Out	Automatic
Film Developing Time	Approximately 90 seconds (Varies depending on the ambient temperature)
Flash	Constant firing flash (automatic light adjustment) Recycle time: 0.2 sec. to 6 sec. (when using new batteries) Effective flash range: 0.6 m - 2.7 m
Power Supply	Two AA-size 1.5V alkaline batteries Capacity: 100 shots (Approximately 10 INSTAX mini 10-pack film packs with new AA batteries)
Auto power off time	5 min.
Others	Exposure counter (number of unexposed films), film pack confirmation window
Dimensions	116 mm x 118.3 mm x 68.2 mm
Weight	307 g (without batteries, strap and film pack)

* Specifications are subject to change without notice.

TROUBLE SHOOTING		
During operation		
Problems	Possible Causes	Solutions
The shutter release won't trip.	① The battery power is low. ② The batteries are not loaded correctly. ③ Power is not turned on. ④ Camera has remained idle for roughly 5 minutes with the power turned on.	① Replace the batteries with new ones. ② Load the batteries correctly. ③ Press the power button to turn on the power. ④ Press the power button after retracting the lens or press the shutter release button to restore the power-on state.
The lamp on the viewfinder blinks and the shutter release won't trip.	● Flash is charging.	● Wait until the lamp on the brightness adjustment dial is lit without blinking.
The film pack won't load into your camera, or won't load into your camera smoothly.	① The film pack is not for your camera. ② You are not loading the film pack correctly.	① Use FUJIFILM INSTAX mini film only. (No other films can be used.) ② Match the yellow line on the film pack with the yellow positioning mark in your camera. Follow the INSTAX mini film pack instructions.
All lamps on the brightness adjustment dial blink at the same time.	① The battery power is low, and it takes a long time to charge the flash. ② A more significant issue with your camera has occurred.	● Replace the batteries with new ones while the power is turned on (when the lens is extended). IMPORTANT: Replace the batteries only while the power is turned on. If you replace the batteries while the power is turned off (when the lens is retracted), the lamps on the brightness adjustment dial blink after turning on the power even with new batteries. * When the problem is due to reason ①, the lamps on the brightness adjustment dial turn off after replacing the batteries. If the problem is due to reason ②, the lamps on the brightness adjustment dial blink even after replacing the batteries. In this case, turn off the power and remove the batteries immediately, then contact an authorized FUJIFILM repair center.
The red lamp on the viewfinder lights up.	● The battery power is low.	● Replace the batteries with new ones.

Printed pictures		
Problems	Possible Causes	Solutions
The finished print looks over exposed. (White in color)	① The method of measuring the subject brightness is unsuitable. ② Brightness adjustment dial setting is incorrect. ③ The ambient temperature is low (below +5°C/+41°F). ④ The background is too dark in comparison with the subject. ⑤ The light sensor or flash sensor window is blocked.	① Point the lens toward the center of the subject and measure the subject brightness. ② While pointing the lens toward the subject, turn the brightness adjustment dial to set the brightness to that for which the lamp lights. ③ Before taking pictures, place your camera in a warm place to bring it to room temperature. ④ Turn the brightness adjustment dial one step toward the ☀ direction. ⑤ When taking a picture, be careful not to cover the two small windows next to the flash on the camera.
The finished print looks under exposed. (Dark)	① The method of measuring the subject brightness is unsuitable. ② Brightness adjustment dial setting is incorrect. ③ The ambient temperature is high (above +40°C/+104°F). ④ The picture was taken with direct light in front of you. ⑤ The flash lampface was blocked. ⑥ The background is too bright in comparison with the subject. ⑦ The flash did not reach the subject. ⑧ The flash reflected back from a mirror or window glass. ⑨ Grasping the lens barrel did not let the shutter work properly.	① Point the lens toward the center of the subject and measure the subject brightness. ② While pointing the lens toward the subject, turn the brightness adjustment dial to set the brightness to that for which the lamp lights. ③ Before taking pictures, place your camera in a cool place. When the picture comes out from your camera, keep it away from places or objects with excessively high temperature. ④ Take a picture with the light behind you, or turn the brightness adjustment dial one step toward the ☁ direction. ⑤ When holding your camera, be careful not to block the flash lampface with your finger or strap. ⑥ Turn the brightness adjustment dial one step toward the ☁ direction. ⑦ Take pictures within 0.6 m to 2.7 m from the subject. ⑧ Adjust your position in taking the picture away from the mirror or window glass. ⑨ Do not grasp the lens barrel when you take pictures.
The picture is out of focus.	① The shooting range is too close to the subject. ② The lens is not clean. ③ Your camera was shaken when taking pictures.	① Take pictures with a distance of at least 0.6 m between you and your subject. ② Clean the lens. ③ Hold your camera firmly and press the shutter release button gently.
The picture is blurred.	① Picture was not permitted to develop without touching, pressure being applied or other interference once it ejected from the camera. ② The picture did not come out smoothly.	① Do not press onto or fold the picture. ② Do not block the film exit with your finger.
The subject in the viewfinder has shifted in finished print.	● The shooting range is too close to the subject.	● Take pictures with a distance of at least 0.6 m between you and your subject.

Information for traceability in Europe

Manufacturer: FUJIFILM Corporation
 Address, City: 7-3, Akasaka 9-Chome, Minato-ku, Tokyo
 Country: JAPAN
 Authorized representative in Europe: FUJIFILM EUROPE GMBH
 Address, City: Düsseldorf Heesenstrasse 31, 40549
 Country: Germany

Information for FUJIFILM in the United States
 FUJIFILM North America Corp.
 200 Summit Lake Drive
 Valhalla, New York 10595, USA

Information for FUJIFILM in Canada
 FUJIFILM Canada Inc.
 600 Suffolk Court, Mississauga, Ontario L5R 4G4

IMPORTANT SAFETY NOTICE

This product has been designed with safety in mind, and to provide safe service when handled correctly and in accordance with the User's Guide and instructions. It is important that both the product and the INSTAX film are handled properly and used only to take pictures as instructed in this User's Guide and in the INSTAX mini film instructions. For your ease and safety, please follow what is written in this User's Guide. It is also a good idea to keep this User's Guide in a safe, easy to find place where you can refer to it if needed.

WARNING

This symbol indicates danger, which could result in injury or death. Please follow these instructions.

WARNING

- Never attempt to take this product apart. There is a danger of an electric shock.
- If this product is dropped or damaged so that the inside is showing, do not touch it. There is danger of an electric shock.
- If the camera or the batteries inside become hot, begin to smoke, make a burning smell or show any sign of unusual condition, remove the batteries right away. Use gloves to keep from burning your hands. Not removing batteries could result in burns or fire.
- Using a flash too close to a person's eyes may for the short term affect the eyesight. Take care when taking picture of infants and young children.
- If your camera gets wet or if something such as pieces of metal get inside, remove the batteries right away to avoid heat buildup or a fire starting inside the camera.
- Do not use this camera in places where there is flammable gas or near open gasoline, benzene, paint thinner or other unstable substances which can give off dangerous vapors. Doing so could result in explosion or fire.
- Store your camera out of the reach of infants and young children. Failure to do this could result in serious injury. (For example, the strap could become wrapped around a child's neck and cause choking.)
- Never take apart the batteries. Do not subject them to heat, throw them into an open fire, or attempt to short-circuit them.
- Doing so could result in the batteries exploding or spilling open causing burns or fire.
- Only use specified batteries in this product. Use of incorrect type of batteries could cause explosion. Dispose of used batteries according to battery disposal instructions.
- Make sure batteries are stored in a safe, secure place and well out of the reach of any infants, young children or pets. Improper storage could result in a child swallowing a battery. (If a child swallows a battery, call a doctor or a hospital right away.)
- Do not look through the close-up lens at the sun or other strong light. Blindness or vision problems could result.
- Never get this product wet or handle it with wet hands. Doing so may result in an electric shock.
- Never take flash photographs of people riding bicycles, driving cars or riding a horse. The flash can distract the driver and frighten the animal, possibly causing an accident.
- Make sure that the battery ⊕ and ⊖ polarities are installed correctly in the camera. A damaged battery or electrolyte leakage may cause a fire, injury, and contaminate the environment.
- Do not touch moving parts inside the camera. You may be injured.
- When using the camera, make sure that the battery cover is attached; otherwise, you may be injured.
- Do not leave the close-up lens in places exposed to strong sunlight. Personal injury or fire could result if the lens should accidentally concentrate the sunbeams on an object or a person.
- Do not swing around the camera. You may be injured.

CE The "CE" mark certifies that this product satisfies the requirements of the EU (European Union) regarding safety, public health, environment and consumer protection. ("CE" is the abbreviation of Conformité Européenne.)

For customers in Turkey:
EEE Complies with Directive.

For customers in the USA:
FCC Statement
 This device complies with part 15 of the FCC Rules. Operation is subject to the following two conditions: (1) This device may not cause harmful interference, and (2) this device must accept any interference received, including interference that may cause undesired operation.

CAUTION

This equipment has been tested and found to comply with the limits for a Class B digital device, pursuant to Part 15 of the FCC Rules. These limits are designed to provide reasonable protection against harmful interference in a residential installation. This equipment generates, uses, and can radiate radio frequency energy and, if not installed and used in accordance with the instructions, may cause harmful interference to radio communications. However, there is no guarantee that interference will not occur in a particular installation. If this equipment does cause harmful interference to radio or television, which can be determined by turning the equipment off and on, the user is encouraged to try to correct the interference by one or more of the following measures:

- Reorient or relocate the receiving antenna
- Increase the separation between the equipment and receiver
- Connect the equipment into an outlet on a circuit different from that to which the receiver is connected
- Consult the dealer or an experienced radio/TV technician for help

Changes or modifications not expressly approved by FUJIFILM responsible for compliance could void the user's authority to operate the equipment.

For customers in Canada:
CAUTION: This Class B digital apparatus complies with Canadian ICES-003.
 Disposal of Electric and Electronic Equipment in Private Households
 Disposal of used Electrical & Electronic Equipment
 (Applicable in the European Union and other European countries with separate collection systems)

This symbol on the product, or in the manual and in the warranty, and/or on its packaging indicates that this product shall not be treated as household waste. Instead it should be taken to an applicable collection point for the recycling of electrical and electronic equipment. By ensuring this product is disposed of correctly, you will help prevent potential negative consequences to the environment and human health, which could otherwise be caused by inappropriate waste handling of this product. If your equipment contains easily removable batteries or accumulators, please dispose these separately according to your local requirements. The recycling of materials will help to conserve natural resources. For more detailed information about recycling of this product, please contact your local city office, your household waste disposal service or the shop where you have purchased the product. In Countries outside of EU: If you wish to discard this product, please contact your local authorities and ask for the correct way of disposal.

COMMON SENSE CAMERA CARE

CAMERA CARE

- Your camera is a precision instrument. Do not get it wet or drop it. Also, do not expose to sand.
- Do not use a strap made for cellular phones or other similar electronic products. These straps are usually too weak to hold your camera securely. For safety, use only straps designed for your camera, and use only as specifically intended and instructed.
- If you are not using your camera for a long interval, unload the batteries and keep it where it will be safe from heat, dust, and moisture.
- Remove soil and dust from the lens, viewfinder window, etc. with an air blower and by wiping lightly with a piece of soft cloth.
- Do not use solvent such as thinner and alcohol to remove soil.
- Keep the film chamber and camera interior clean to avoid damaging films.
- In hot weather, do not leave your camera in a closed car or on the beach, and do not leave it in moist places.
- Moth repellent gas such as naphthalene adversely affects your camera and films. Avoid keeping your camera or films in a chest with mothballs.
- Your camera is computer-controlled. If you should experience an operational issue, remove the batteries and then reload them.
- Note that the temperature range within which your camera can be used is +5°C/+41°F to +40°C/+104°F.

INSTAX mini FILM AND PRINT CARE

See FUJIFILM INSTAX mini film for film use instructions. Follow all instructions for safe and proper use.

- Keep the film in a cool and dry place. Do not leave the film in a place where the temperature is extremely high (e.g., in a closed car).
- When you load a film pack, use the film as soon as possible.
- If the film has been kept in a place where the temperature is extremely high or low, bring it to room temperature before starting to take pictures.
- Be sure to use the film before the expiration or "Use Before" date.
- Avoid airport checked luggage inspection and other strong X-ray illumination. The effect of fogging, etc. may appear on un-used film. We recommend that you carry the camera and/or the film onto the aircraft as carry-on luggage. (Check with each airport for more information.)
- Avoiding strong light, keep the developed prints in a cool and dry place.
- Do not puncture, tear, or cut INSTAX mini film. If film becomes damaged, do not use.



