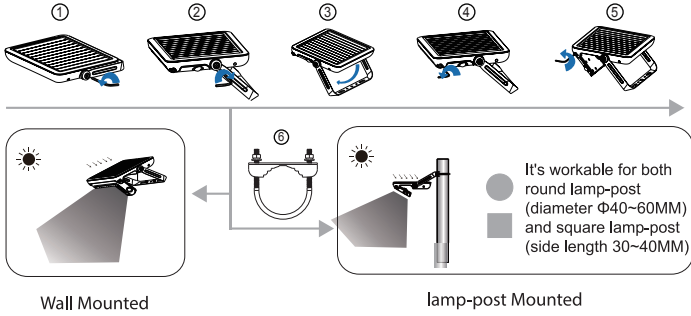


Installation



1. Prepare lamp, accessories and tools well firstly.
2. Use the allen wrench to loosen the bracket (see picture 1), adjust it to the appropriate angle(see picture 2) and then fix the screw tightly(see picture 3).
3. Pull out the light panel and adjust it to your demanded lighting angle(see picture 4), and then fix the screw to tighten the lamp(see picture 5).
4. Fix the lamp onto the wall or lamp-post (see picture 6).

Notice

1. This is a solar powered lamp, please install it in a location where can get enough sunshine.
2. Please note the lighting time depends on sunshine duration & weather.
3. The lamp will light up automatically at dusk.
4. Recommended installation height is 3~4Mtr.
5. The lamp is equipped with an internal battery pack, which is replaceable. If any need, please contact seller for correct new battery pack.

V-TAC[®]

INNOVATIVE LED LIGHTING

INSTRUCTION MANUAL



Model: VT-787-10

Please read and follow all instructions to operate.
Save this manual for future reference.

Specification

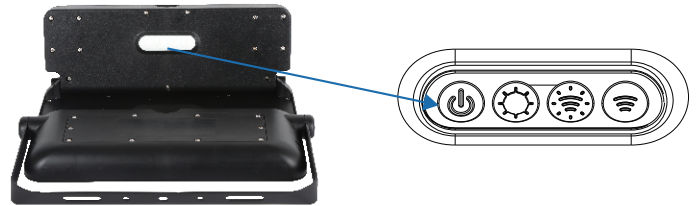
SKU	8550
Power/Lumen	10W/1100W
LEDs	SMD2835*60PCS
Li-ion Battery	18650/3.7V/7200mAh,replaceable
Solar Panel	6Wp,Poly Crystalline Silicon
Lighting Panel	135°Adjustable
Bracket	360°Adjustable
Working Mode	3 different lighting modes
Detection Angle/Area	180°/≤8Mtrs
Visible Distance	6-7Mtr
IP Degree	IP 65
Lifespan	35,000hrs
Installation Height	3-4Mtr

Features

- ZERO Electricity Cost
- Solar Powered
- PIR Detective
- Light on/off automatically
- Outdoor
- Cordless

Working Modes

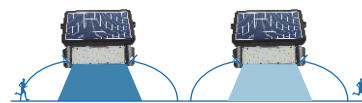
Please press the buttons and adjust to the demanded working mode.



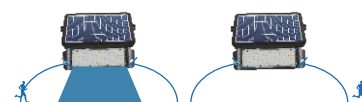
On/Off



Automatically turns on at the dusk(<30lux)and remains 20% brightness.



Automatically turns on to full brightness (1100lm) when motion is detected in the range ≤8mtrs and then turns to 3% brightness in 20 seconds of no motion.



Automatically turns on to full brightness (1100lm) when motion is detected in the range ≤8mtrs and then turns off in 30 seconds of no motion.