

SAFE BATTERY USAGE

- Use alkaline batteries for best performance and longer life.
- Use only the battery type recommended for the unit.
- Batteries should be replaced only by an adult.
- Insert batteries with the correct polarity (+ and -).
- Do not mix old and new batteries.
- Do not mix alkaline, standard (carbon-zinc), or rechargeable batteries.
- Do not short-circuit batteries.
- When not used for an extended time, remove batteries to prevent possible leakage and damage to the unit.
- Do not mix rechargeable and non-rechargeable batteries.
- Rechargeable batteries are to be removed from the toy before charging.
- Rechargeable batteries are to be recharged only under adult supervision.
- Do not recharge non-rechargeable batteries.
- Exhausted batteries are to be removed from the toy.
- Do not dispose of batteries in fire as they may leak or explode.

FCC COMPLIANCE

NOTE: This equipment has been tested and found to comply with the limits for a Class B digital device, pursuant to Part 15 of the FCC Rules. These limits are designed to provide reasonable protection against harmful interference in a residential installation. This equipment generates, uses and can radiate radio frequency energy and, if not installed and used in accordance with the instructions, may cause harmful interference to radio communications. However, there is no guarantee that interference will not occur in a particular installation. If this equipment does cause harmful interference to radio or television reception, which can be determined by turning the equipment off and on, the user is encouraged to try to correct the interference by one or more of the following measures:

- Reorient or relocate the receiving antenna.
- Increase the separation between the equipment and receiver.
- Connect the equipment into an outlet on a circuit different from that to which the receiver is connected.
- Consult the dealer or an experienced radio/TV technician for help.

This device complies with Part 15 of the FCC Rules. Operation is subject to the following two conditions: (1) This device may not cause harmful interference, and (2) this device must accept any interference received, including interference that may cause undesired operation.

Caution: Modifications not authorized by the manufacturer may void users authority to operate this device. CAN ICES-3 (B)/NMB-3(B).



'Let's care for the environment!'

The wheellie bin symbol indicates that the product must not be disposed of with other household waste. Please use designated collection points or recycling facilities when disposing of the item.

Do not treat old batteries as household waste. Take them to a designated recycling facility.

Please keep this manual as it contains important information.



0819-1-E/INT
Printed In China

www.LOLsurprise.com

©2019 MGA Entertainment, Inc.

L.O.L. SURPRISE!™ is a trademark of MGA in the U.S. and other countries. All logos, names, characters, likenesses, images, slogans, and packaging appearance are the property of MGA.

MGA Entertainment, Inc.

9220 Winnetka Ave. Chatsworth, CA 91311 U.S.A.
(800) 222-4685

MGA Entertainment UK Ltd.

50 Presley Way, Crownhill, Milton Keynes,
MK8 0ES, Bucks, UK
+ 0800 521 558

MGA Entertainment (Netherlands) B.V.

Klipperaak 201, 2411 ND Bodegraven, NL
Tel.: +31 (0) 172-758 038
E-mail: klantenservice@mgae.com

Imported by MGA Entertainment Australia Pty Ltd

Suite 2.02, 32 Delhi Road
Macquarie Park NSW 2113
1300 059 676

The preferred method of contact for
Customer Service is through our e-mail
contact form at www.mgae.com



2-IN-1 GLAMPER



 **WARNING:**
CHOKING HAZARD-Small parts.
Not for children under 3 years.

SKU: 559771

AGES 3+

ADULT ASSEMBLY AND SUPERVISION REQUIRED



WATCH THE DEMO VIDEO:

LOLSURPRISE.COM

Illustrations are for reference only. Styles may vary from actual contents.

WARNING:

- WARNING: This toy produces flashes that may trigger epilepsy in sensitised individuals.
- ADULT ASSEMBLY REQUIRED.
- ADULT SUPERVISION IS REQUIRED when children are playing in or around water.
- Do not sit, stand, or jump on the unit, as doing so may result in bodily injury and/or damage to the unit.
- Not suitable for children under 3 years of age.

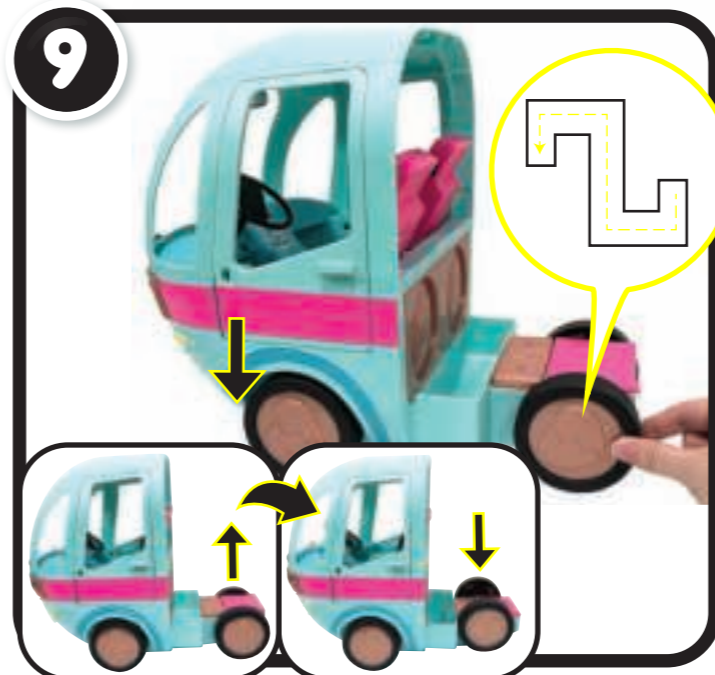
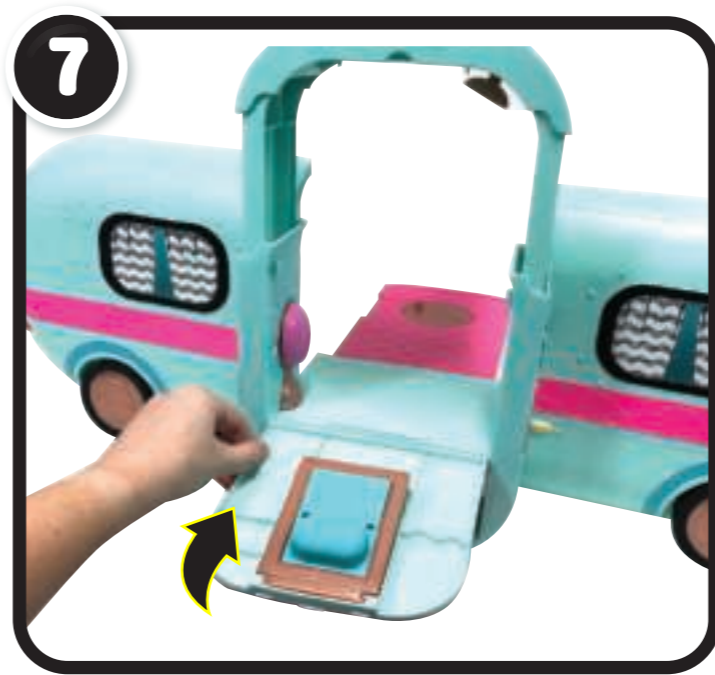
IMPORTANT INFORMATION

- Only one doll is included with this product. Multiple characters are shown in this manual for demonstration only.
- Before beginning, cover the play area to protect from possible water damage.
- Immediately wipe up spilled water after playing. To prevent spillage, carefully lift the pool out of the base and empty the water.
- Always empty water from the pool and dry thoroughly before storing.
- Do not use water with the toilet.
- Thoroughly air dry the doll and pool in a well-ventilated area after use and before storing.
- For best results, fill the bottle and feed the doll two times.
- Do not place the doll in extremely hot water or feed the doll extremely hot water.
- Squeeze out all water from the bottle and the doll after each use.
- Thoroughly drain the doll on a dry towel in a well-ventilated area after use and before storing.
- Air dry the doll only. Do not place in the dryer or subject to excessive heat.
- Do not store the doll in direct sunlight for extended periods of time.
- Only apply stickers to the included unit and accessories, as adhesive may not be completely removed from all surfaces.
- When lifting up the glamper, hold the front and back of the unit at the same time.

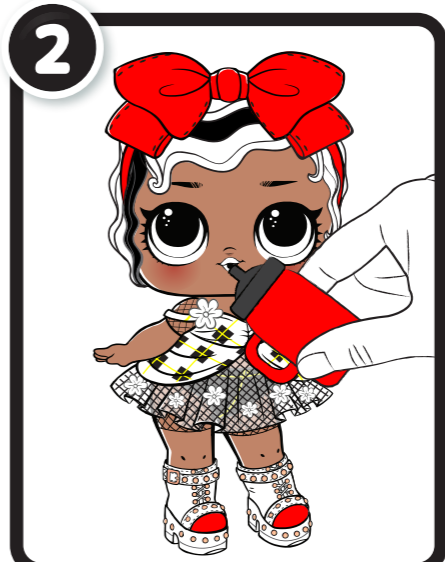
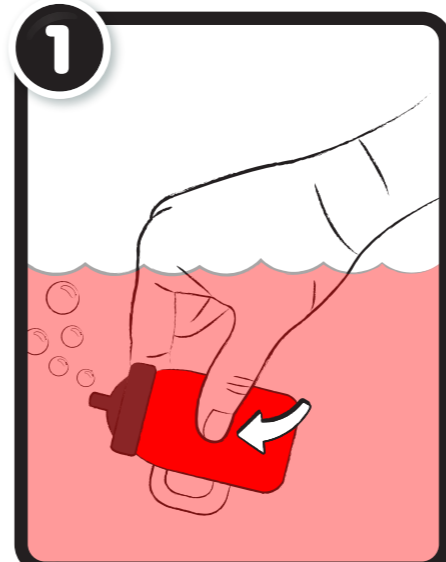
CONTENTS

A	B	C	D	E	F
G	H	I	J	K	L
M	N	O	P	Q	R
S	T	U	V	W	X
Y	Z	1	2	3	4
5	6	7	8	9	10
11	12	13	14	15	

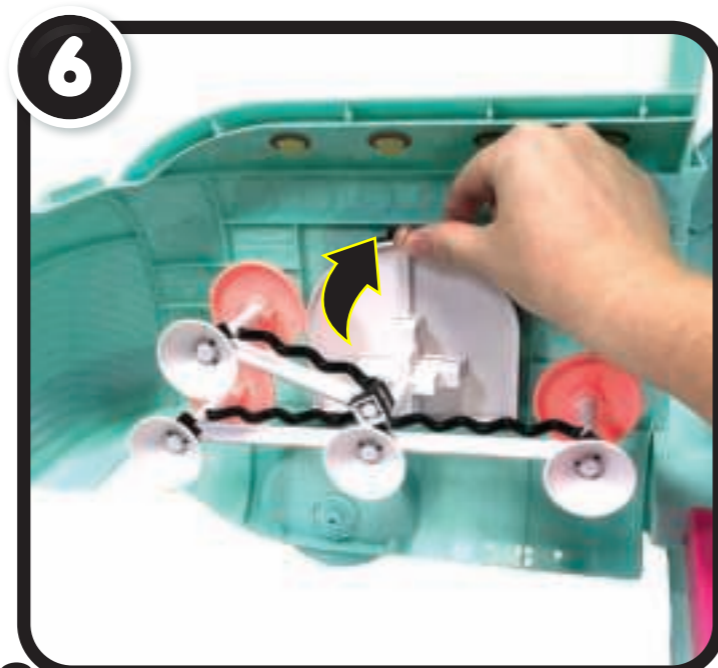
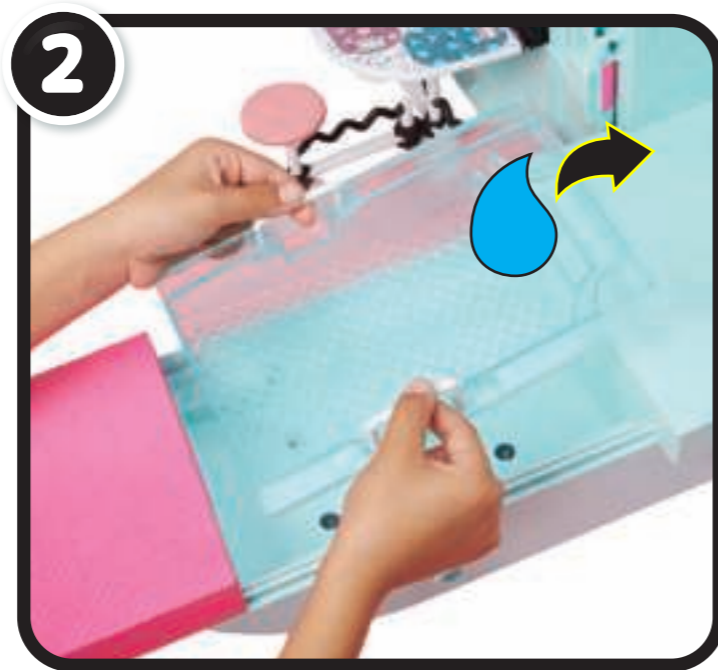
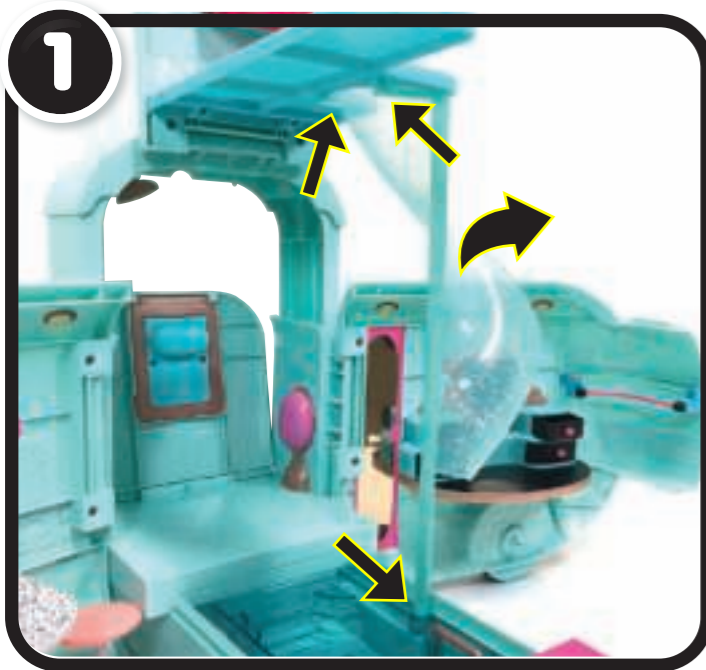
PRO TIP:
Customize your
Glamper with
the included
stickers!



DOLL FEATURE



FOLDING

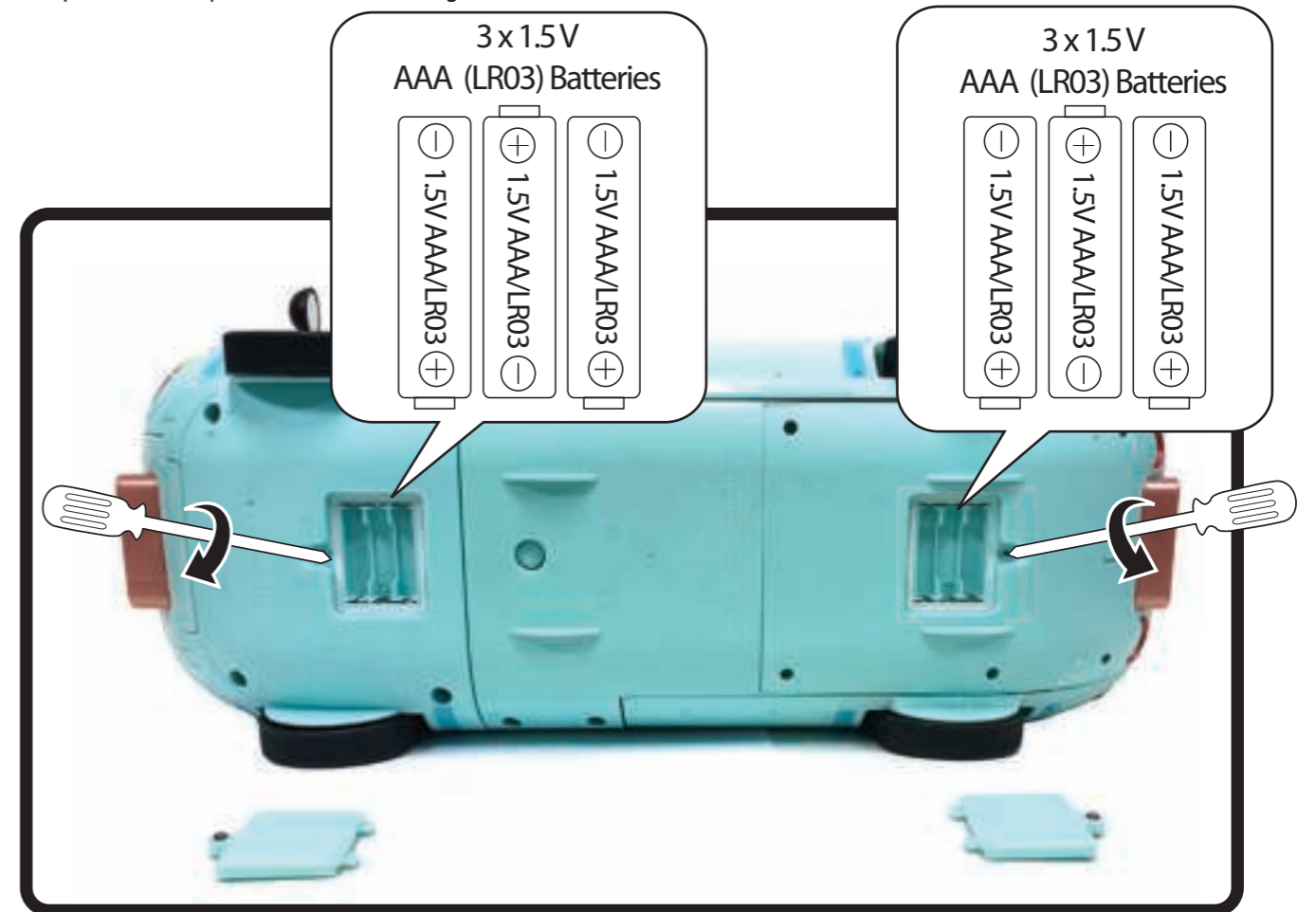


10

ADULT BATTERY INSTALLATION REQUIRED

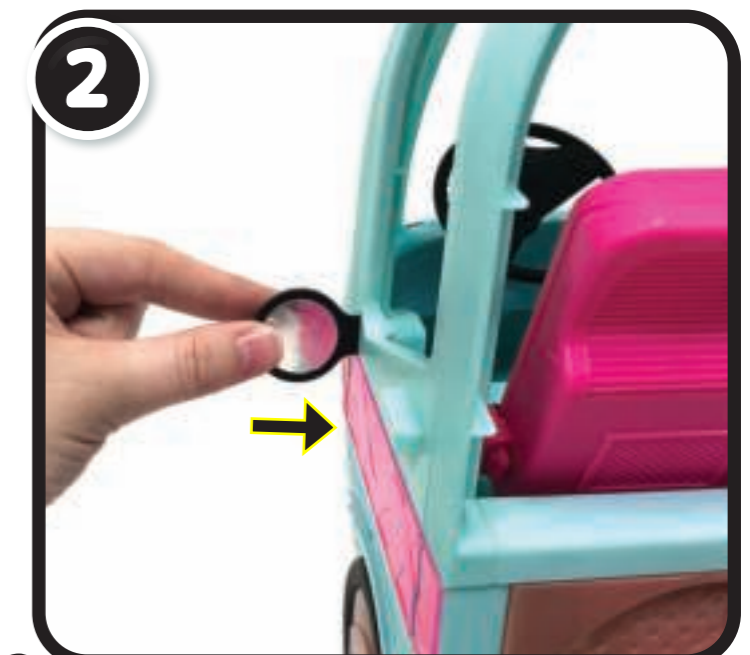
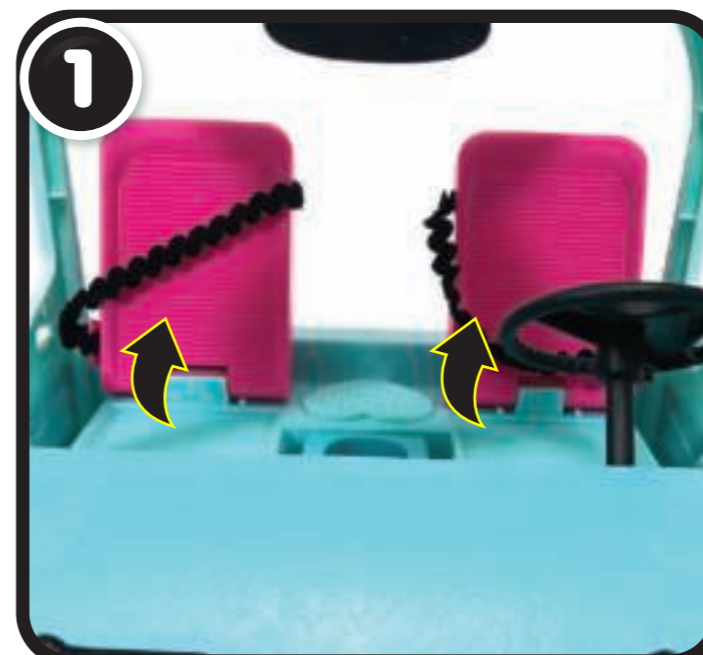
Before playing, an adult must install fresh alkaline batteries (not included) in the unit. Here's how:

1. Using a Phillips screwdriver (not included) remove the screws and battery compartment covers from under the unit.
2. Install six (6) 1.5V AAA (LR03) alkaline batteries (not included) making sure the (+) and (-) ends face the proper direction as indicated inside the battery compartments.
3. Replace the compartment covers and tighten the screws.



LET'S PLAY!

Before beginning, cover the play area to prevent possible water damage. Some dolls, pets, and accessories are not included. Shown for demonstration only.



3

