

# Far Infrared Heating Panel

T - Serie



Technical Data

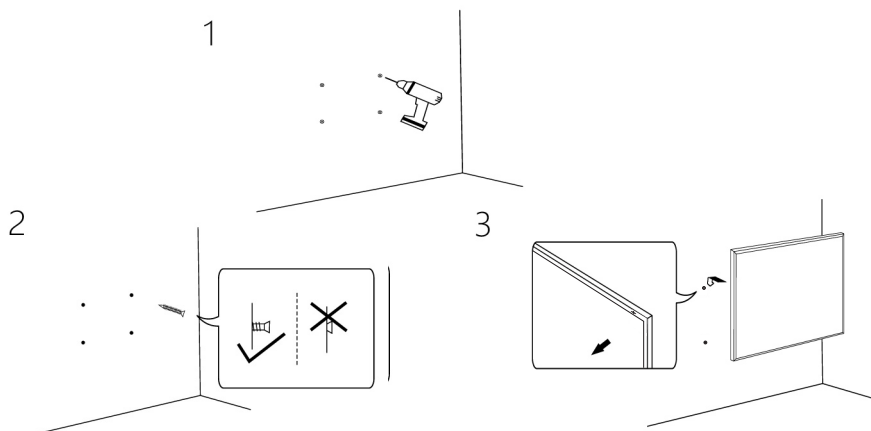
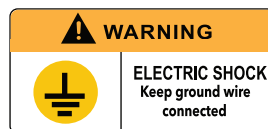
service	100000 hours
---------	--------------

voltage	220-240v
---------	----------

surface temperature	85-125 °C
---------------------	-----------

Energy transferratio	98%
----------------------	-----

## Installation



## IMPORTANT SAFETY INSTRUCTIONS

### WARNING

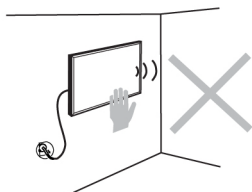
To reduce the risk of burns, electric shock, fire or injury during the usage of this heating panel, basic safety precaution should always be followed.

#### Please read all instructions before using the heating panel

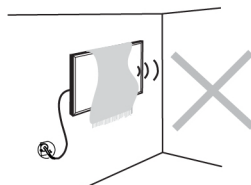
1. Do not damage or destroy the power cord. Do not change, bend, stretch or press the power cord. Do not add great weight on it.
2. Be sure the usage voltage is among 220-240V, 50Hz or 110-120V, 60Hz.
3. The heating panel will draw more current than small appliances, So a separate 13A socket is required.
4. Keep it away from children, the old, the sick, pets or people who are intoxicated.
5. Please do not jump or stand on the heater, do not apply strong pressure on the heater.
6. Be sure to unplug the power cord and wait until the heating panel is completely cooled before cleaning. Use dry fabric to clean it, flammable substances are forbidden.
7. Unauthorized and unskilled people are forbidden to dismantle or repair this product.



### WARNING



Don't touch



Don't cover

#### Warm tips

1. Non-stop use will shorten the use life of the heaters, so a break after every 12 hours use if possible.
2. Do not use the heaters when environment temperature is over 20°C. Prevent working in the high temperature, or it will weaken the performance.
3. Safe distance for socket is 20 cm above the floor at least.
4. Keep away from combustibles and explosive materials when the heaters are working.
5. Safe distance: keep space of 30 cm from the front or the up side. 10 cm from the back. 10 cm from the right or left side.
6. During first one day or two use, new heaters may give off odors which has no harm to people.