

封底

封面

Change Shells As You Want

GPods are designed with reusable snap-on shells for different looks and they can be easily removed from the four corners.

We will release more earbuds shells in the future. Join the GPods community, and get the latest product information and benefits.

HHOGene | GPods
Designed by HHO Made in China
Add:Unit 3A-8, 12/F Kaiser Center, NO18 Centre ST, Sai Ying Pun, HK

Keep The Rhythm Going

10 mins
2 hours listening

We have 4 pairs of ear tips of different sizes. For more comfort and well-functioning ANC, please choose the most suitable ear tips.

L M S XS

When you put the GPods back into the charging case, the light on the earbuds will show you the battery level. With 10 minutes of fast charging, you will get 2 hours battery life.

Charging case button instructions: Press the button for 3 seconds to disconnect the current device and the GPods will enter into pairing mode. Press the button for 10 seconds to restore to factory settings.

Touch Control

Using the thumb against the back of the GPods and then using the forefinger to touch the touch area for better sensitivity.

- DOUBLE TAP L/R**
Play/Pause
Answer/Hang up a call
- LONG PRESS R**
Switch between ANC/Transparency mode
- MORE OPTIONS**
Please refer to HHOGene APP
- TRIPLE TAP L/R**
Next song/Reject a call
- LONG PRESS L**
Light on/off

Welcome to HHOGene | GPods

DARE TO SHINE

< QUICK USER GUIDE >
<https://www.hhogene.com/>

HHOGene APP To Explore Light

compatible with >iOS 10.0/Android 6.0

Scan the QR Code/ Search "HHOGene" in the APP Store to install the HHOGene APP. Then enter the APP to use according to guidance.

Fast Connection

GPods will turn on as soon as you open the charging case. The light on the earbuds shows the battery level:

- Green light: 61%-100% battery
- Orange light: 21%-60% battery
- Red light: 5%-20% battery
- Without light: <5% battery

When the light starts breathing, it means that it has entered Bluetooth pairing mode. Please go to the Bluetooth settings and make sure "HHOGene GPods" are connected. Then wait for GPods to connect successfully in APP, and you can enjoy the world's first earbuds with light control.

Explore 300,000 Color Combinations

BRIGHT
BEATS
COLORS

A unique software system allows full control of the digital light. Brightness, beats, and colors are at the beck and function through digital technology built into every GPods. GPods support an estimated 300,000 color combinations, unleash creativity with do-it-yourself color settings, and endless opportunities for light effects.

Capture The Color Of The World

With just one click, AI with algorithmic capabilities allows the arrangement of photos and analysis of the color ratios found in stored images. Colors for each pixel point in an image are sorted to calculate color blocks. These blocks are transformed into light which is then projected on each earbud in a colorful style.

名称:说明书

工艺: 128g黑卡+单色印刷 Pantone CG 2C 风琴折

外尺寸: 长440mm (88mm*5) *100mm

封面

HHOGene Device Warranty Information

GPods purchased on hhogene.com or authorized sales channels come with a limited 1-year warranty. The duration of this warranty is dependent on the original country or region of purchase, and is only redeemable within the original country or region.

Unless otherwise specified, this warranty covers the hardware components of the product as originally covers, consumable items, or accessories, even if packaged or sold together with the product. The limited warranty only covers functional defects of product caused by workmanship or build materials. For more details, please contact HHOGene Customer Support by visiting www.hhogene.com

FCC COMPLIANCE

This device complies with part 15 of the FCC Rules. Operation is subject to the following two conditions: (1) this device may not cause harmful interference; and (2) this device must accept any interference received, including interference that may cause undesired operation.

Note: This equipment has been tested and found to comply with the limits for a Class B digital device, pursuant to Part 15 of the FCC Rules. These limits are designed to provide reasonable protection against harmful interference in a residential installation.

This equipment generates, uses, and can radiate radio frequency energy and, if not installed and used in accordance with the instructions, may cause harmful interference to radio communications. However, there is no guarantee that interference will not occur in a particular installation.

If this equipment does cause harmful interference to radio or television reception, which can be determined by turning the equipment off and on, the user is encouraged to try to correct the interference by one or more of the following measures:

- Reorient or relocate the receiving antenna.
- Increase the separation between the equipment and receiver.
- Connect the equipment into an outlet on a circuit different from that to which the receiver is connected.

Consult the dealer or an experienced radio/TV technician for help. Changes or modifications not expressly approved by could void the user's authority to operate this equipment.

Changes or modifications not expressly approved by the party responsible for compliance could void the user's authority to operate the equipment.

FCC ID: 2A5DZ-GLA001

Battery Information

Your device has an internal, non-removable, rechargeable battery. Do not attempt to remove the battery, as you may damage the device. The battery can be charged and discharged hundreds of times, but it will eventually wear out. Charging time can vary depending on device capability.

Battery safety

If left unused, a fully charged battery will lose its charge over time. Always keep the battery between -10°C and 40°C (14°F and 104°F) for optimal performance. Extreme temperatures reduce the capacity and lifetime of the battery. A device may temporarily stop working if its battery is too hot or too cold. Do not dispose of batteries in a fire as they may explode. Obey local regulations. Recycle when possible. Do not dispose of as household waste. Use the battery for its intended purpose only. Improper use of, or use of unapproved or incompatible, batteries may present a risk of fire explosion, or other hazards, and may invalidate any approval or warranty. If you believe the battery is damaged, take it to a service center or your local shop before continuing to use it. Never use a damaged battery. Do not charge your device during a lightning storm.

DONT attempt to remove the rechargeable lithium-ion battery battery from this product. Contact your local retailer or other qualified professional for removal. Please dispose of used batteries properly, following local regulations.

GPods Specifications

Product Name	HHOGene GPods
Product Model	GLA001
Bluetooth	5.2
Audio Codec	SBC
ANC	20-25dB
Water Resistance	IPX4
Battery Capacity	Earbuds: 45mAh; Charging case: 600mAh
Charging Case Parameter	Input: 5V/1A, Output: 5V/0.18A
Charging Type	USB-C
Charging Time	1.5 hours (Maximum)
Fast Charging Time	10 minutes fast charging for 2 hours listening (light off)
Transmission Range	10 meters
Speaker Impedance	32ohm
Size	Charging Case: 44.6x33.3x36.6mm Earbuds (single): 31x19x23.6mm Earbuds Shell (single): 32x10.88x4.15mm
Weight	Charging Case: 43.6g Earbuds (single): 5.4g Earbuds Shell (single): 0.4g



Join GPods community,
get the latest product information
and benefits.

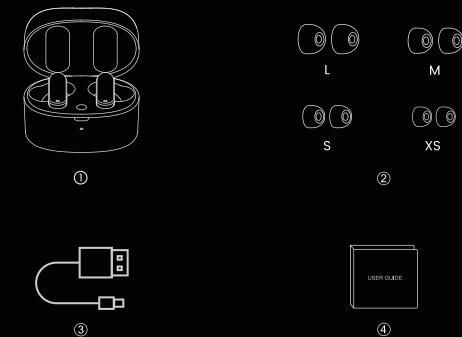
HHOGene | GPods

< SAFETY INFORMATION & WARRANTY CARD >

<https://www.hhogene.com/>

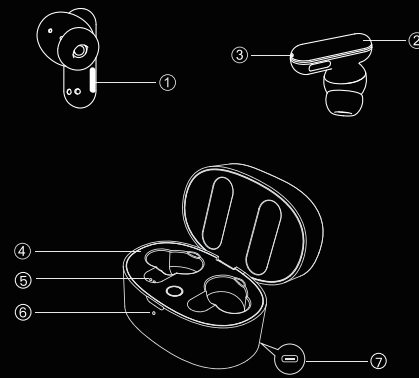
封底

Package Contents



- ① Charging Case with GPods
- ② 4 Sets of Ear Tips (One set already on the earbuds)
- ③ 1 x Type-C Charging Cable
- ④ 1 x User Guide & Safety Information And Warranty Card

Product Instructions



- ① Multifunction Touch Control
- ② LED Light Beam
- ③ Charging Contacts
- ④ Charging Indicator
- ⑤ Microphone
- ⑥ Type-C Charging Port
- ⑦ Charging Case

Important Safety Informations

Read all the instructions before using the product

To stay safe, keep the earbuds away from small children and pets. The earbuds contain a lithium-ion battery and may be hazardous if swallowed. If ingested, seek immediate medical attention.

⚠ Do NOT use the earbuds at on high volume for a long time to avoid hearing damage; use your earbuds at a comfortable, moderate volume level. Turn the volume down on your device before placing the earbuds in/on your ears; then turn the volume up gradually until you reach a comfortable listening level. Long-term exposure to loud music or sounds may cause hearing damage. It is best to avoid high volume levels when using these earbuds, especially for extended periods.

Do not use these earbuds when operating a motor vehicle, a bicycle, or machinery or where your inability to hear outside sounds may present a danger to you or others.

Using these earbuds limits your ability to hear noises around you, regardless of listening volume. Please be cautious when using these earbuds.

Use caution and follow applicable laws regarding mobile phone and earbuds use if you are using earbuds for phone calls while driving. Some jurisdictions impose specific limitations, such as single earpiece configuration, on the use of such products while driving.

Do not drop, sit on, insert or allow the earbuds to be immersed in water. Use of a power supply or charger not recommended or sold by a power pack manufacturer may result in a risk of fire or injury to people.

Do not use the charging case over its output rating.

Important Safety Informations

Read all the instructions before using the product

Use this product only with an agency-approved power supply that meets local regulatory requirements (e.g., UL, CSA, VDE, CCC).

Do not use a charging case that is damaged or modified. It might exhibit unpredictable behavior resulting in fire, explosion, or risk of injuring people.

Do not disassemble the charging case. Incorrect reassembly may result in a risk of fire or injury to people.

Do not open, crush, or expose the charging case to fire, or very high temperature. Exposure to fire or temperature above 212°F, 100°C might cause an explosion.

Have servicing performed by a qualified repair person using only identical replacement parts.

This product contains magnetic materials. Consult your physician on whether this might affect your implant medical devices.

Do not make unauthorized alterations to this product.

Support: For support and troubleshooting information, user discussion boards, and the latest HHOGene software download, go to www.HHO-GenE.com.

HHOGene | GPods

Model: GLA001
FCC ID: 2A5DZ-GLA001
CMIIT ID: 2022DP13599



For FAQs and more help information,
please visit: hhogene.com/support

Contact:
service@hhogene.com

Designed by HHO Made in China
Add:Unit 3A-8, 12/F Kaiser Center, NO18 Centre ST,
Sai Ying Pun, HK

HHOGene The brand belongs to HHO Co.,LTD.
<https://www.hhogene.com/>