

1

2

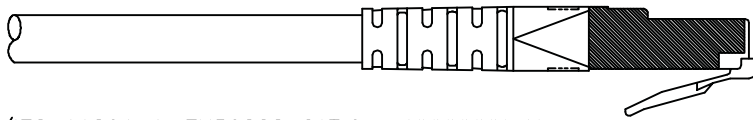
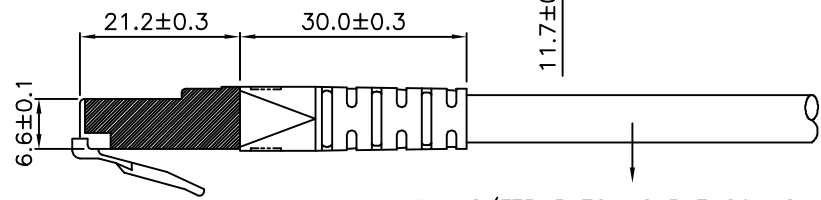
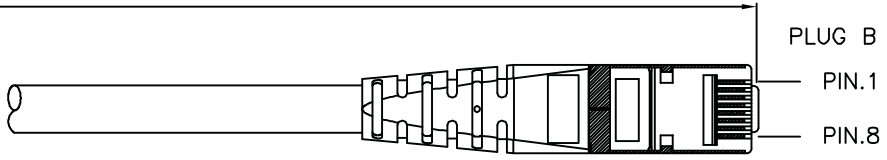
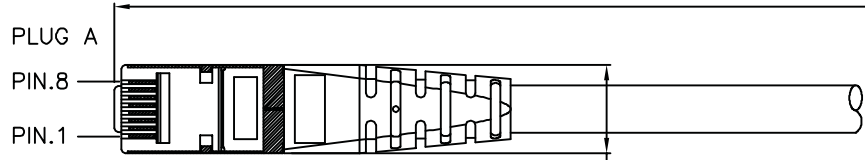
3

4

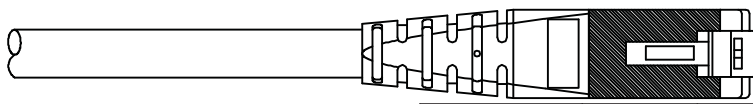
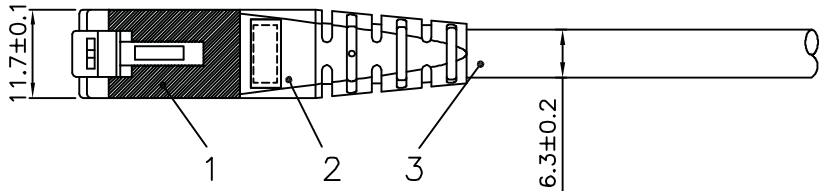
5

6

Total length (optional)



roline S/FTP PATCH CABLE 26AWG 4PR ISO/IEC 11801 & EN50288 CAT.6 XXXXXXXX-X



- (1) Jacket Color : White(RAL9003)
- (2) Wiring:T568B

item no.	length	tolerance
21.15.1316	0.3M	+20 -0
21.15.1326	0.5M	+20 -0
21.15.1336	1M	+20 -0
21.15.0829	1.5M	+20 -0
21.15.1346	2M	+20 -10
21.15.1356	3M	+20 -10
21.15.1366	5M	+30 -20
21.15.1376	7M	+30 -20
21.15.1386	10M	+30 -20
21.15.1396	15M	+30 -20
21.15.1406	20M	+70 -30

Specification :

Material :

- RJ45 Plug :
  - Housing : Polycarbonate,Transparent color.
  - Contact material : Phosphor Bronze with 50-60 micro-inch Nickel plated.
  - Contact finished : Min. 50 micro-inch Gold plated on surface contact area.
  - Shield : Bronze with Nickel plated.
- Molding : PVC.
- Cable :
  - Jacket : PVC.
  - Conductor : 26 AWG stranded copper.
  - Isolation : PE.
  - Shield : Aluminum Foil Shielded for Each Pair, Tin Copper Braid.
- Cable structure : S/FTP, 4 twisted pair.
- Minimum Bending Radius: 50mm

item no	21.15.1316	21.15.1326	21.15.1336	21.15.0829	21.15.1346
	21.15.1356	21.15.1366	21.15.1376	21.15.1386	21.15.1396

Desc ROLINE Cat 6 S/FTP Patch Cord,White

"#": Matching DIM.	DRAWING	23.JuL.2016	byz
"*": Important DIM.	CHECK	23.JuL.2016	Jane
Others General DIM.	APPROVAL	23.JuL.2016	Jaimy
GENERAL TOLERANCE OF DIMENSIONS	DATE	NAME	
X.XXX ±0.005	SCALE	1/1 (A4)	UNIT mm
X.XX ±0.05			
X.X ±0.1			



No.	MODIFIED AREA	ORIGINAL	MODIFY	DATE	MODIFIER

DRAWING NO.	
DRAWING CLASSIFICATION	S SHEET 1 OF 1