

Sunny Seat™ Cat Bed

IMPORTANT: Read and understand all instructions prior to proceeding.

Your Sunny Seat™ Cat Bed can be attached to any smooth surfaced, double paned or insulated paned window or sliding door.

ASSEMBLING AND MOUNTING YOUR SUNNY SEAT™ CAT BED

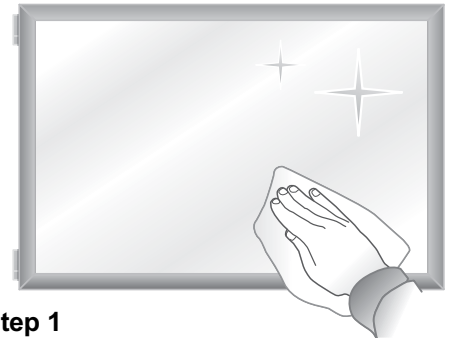
- Step 1** Thoroughly clean the mounting surface and the suction cups to ensure a proper seal between the suction cup and the glass.
- Step 2** Attach left, middle and right sides of base, then attach suction cups to base ends.
- Step 3** Thread cables through fabric cover. Slide fabric cover onto base from the curved side towards the suction cups so that it fits snugly.
- Step 4** Mount the Cat Bed to ensure a horizontal level by first attaching the bottom suction cups, then the upper suction cups. Select a height that allows your cat easy access.

PRECAUTIONS

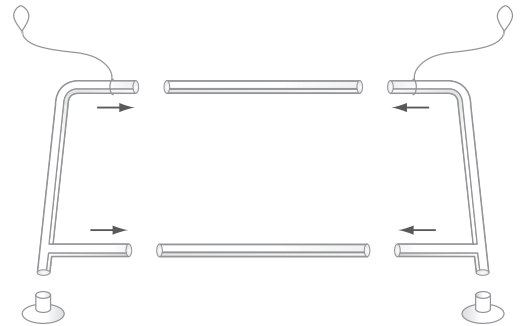
- Do not open either the chosen window or door when the cat is enjoying the Sunny Seat™ Cat Bed
- Use of the Cat Bed on single paned, antique, tinted or textured glass is not recommended due to the risk of breakage.
- Do not mount above anything valuable, breakable, or anything that could harm your pet.
- Do not place your Sunny Seat™ Cat Bed above an open flame or other source of significant heat. Traditional radiant heaters are acceptable.
- Do not place your Sunny Seat™ Cat Bed where a person or other animal could be injured.
- Inspect and re-secure suction cups as necessary. Over time the seal may weaken and need to be reestablished.
- Do not allow more than two cats on the Sunny Seat™ Cat Bed at a time. The Cat Bed is designed to hold a maximum weight of 50 pounds.

CARE INSTRUCTIONS

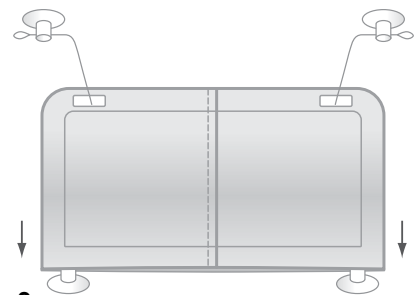
- Use a damp cloth to wipe any loose hair.
- If machine washing is desired, detach the cables from the upper suction cups. Slide the fabric cover off the frame allowing the cables to slide through.
- Machine wash using cold water, gentle cycle. Lay flat to dry. Do not iron.



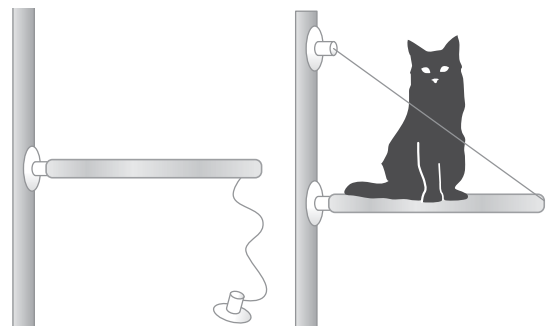
Step 1



Step 2



Step 3



Step 4