



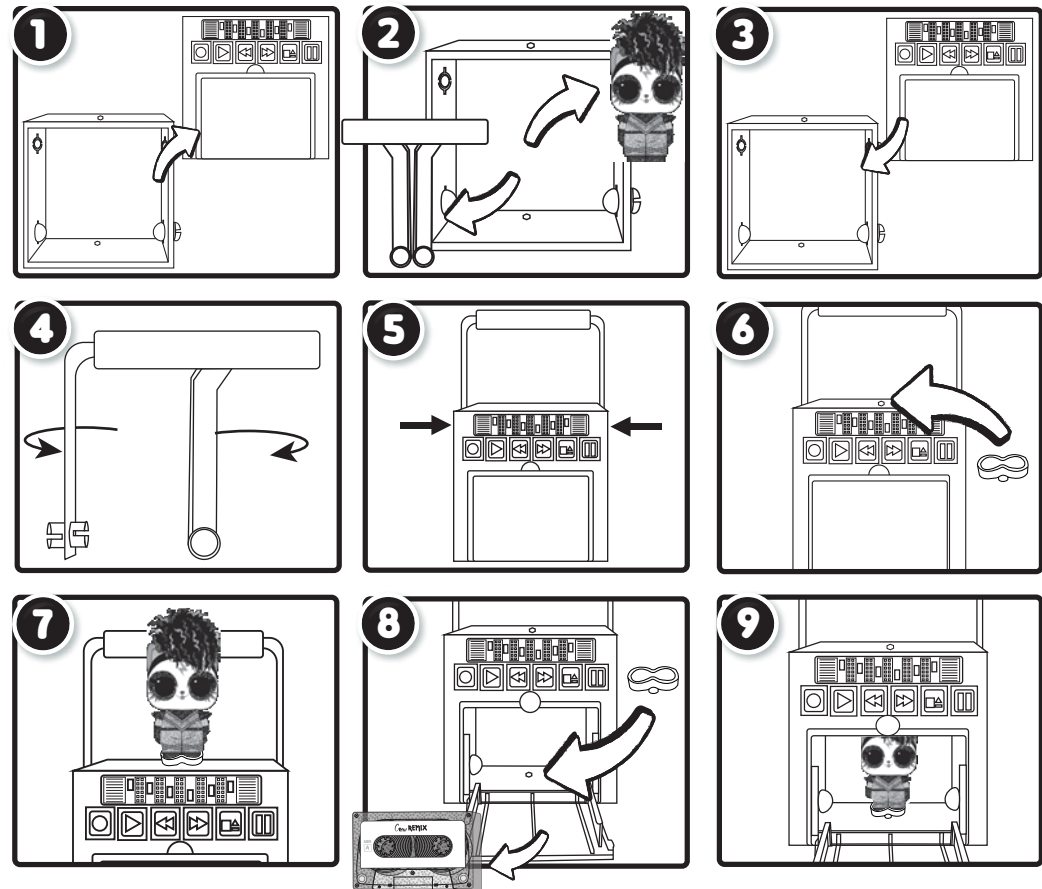
AGES 3+

WARNING:
CHOKING HAZARD-Small parts.
Not for children under 3 years.

SKU: 567080

ADULT SUPERVISION REQUIRED

CASSETTE PLAYER



Please keep this manual as it contains important information.



0520-0-E/INT
Printed in China

www.LOLsurprise.com
©2020 MGA Entertainment, Inc.
L.O.L. SURPRISE! REMIX™ is a trademark of MGA in the U.S. and other countries. All logos, names, characters, likenesses, images, slogans, and packaging appearance are the property of MGA.

The preferred method of contact for Customer Service is through our e-mail contact form at www.mgae.com

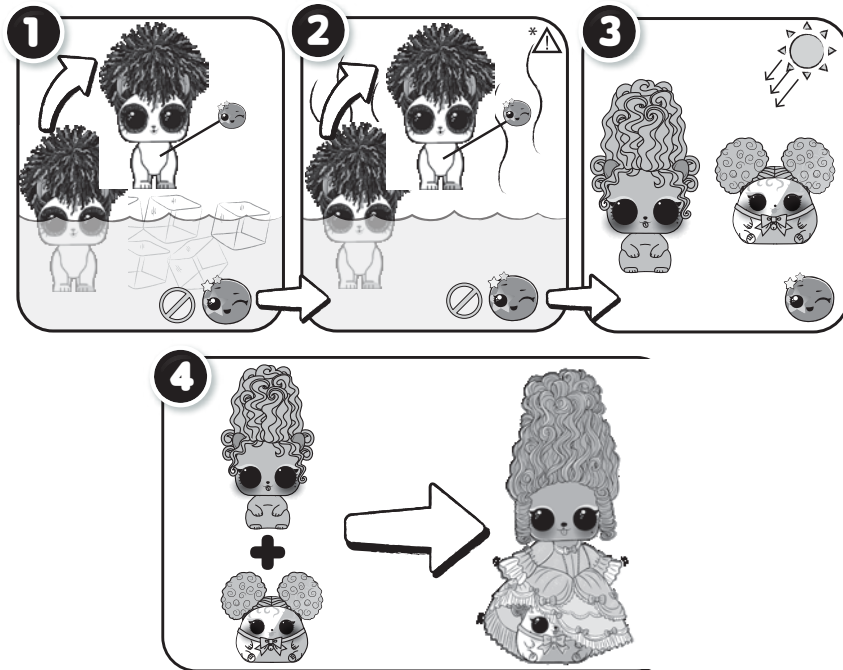
MGA Entertainment, Inc.
9220 Winnetka Ave. Chatsworth, CA 91311 U.S.A.
(800) 222-4685

MGA Entertainment UK Ltd.
50 Presley Way, Crownhill, Milton Keynes,
MK8 0ES, Bucks, UK
+ 0800 521 558

MGA Entertainment (Netherlands) B.V.
Baronie 68-70, 2404XG Alphen a/d Rijn, The Netherlands
Tel: +31 (0) 172 758038
E-mail: klantenservice@mgae.com

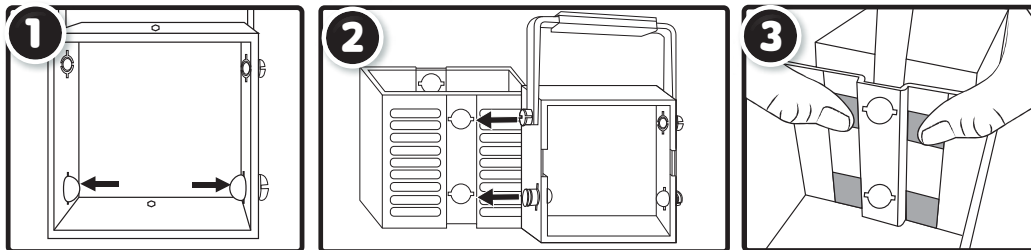
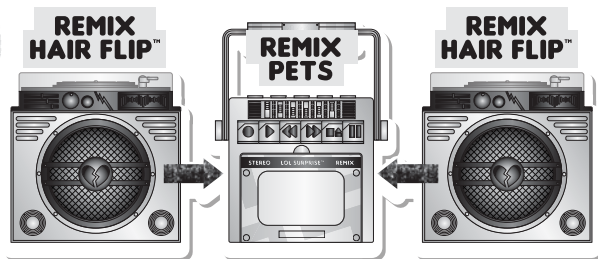
Imported by MGA Entertainment Australia Pty Ltd
Suite 2.02, 32 Delhi Road
Macquarie Park NSW 2113
1300 059 676

FEATURES



BOOMBOX

Collect multiple L.O.L. Surprise! Remix™ Hair Flip™ dolls (sold separately) to create a boombox!



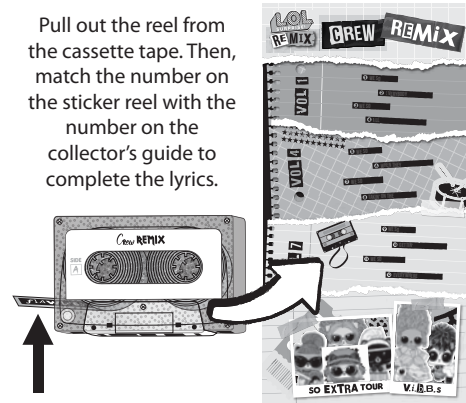
Remove the front cover on the cassette player and push out the bottom pegs.

Remove the top cover on the speaker. Then, use slight force to insert the pegs on the cassette player to the openings on the speaker.

There are four squared marks inside the speaker's walls. When inserting the pegs, press in from both sides.

LYRICS!

Pull out the reel from the cassette tape. Then, match the number on the sticker reel with the number on the collector's guide to complete the lyrics.



COLLECT THEM ALL!

Collect them all to find all the lyrics and put together the complete song.

- L.O.L. Surprise! Remix™ Hair Flip™
- L.O.L. Surprise! Remix™ Pets
- L.O.L. Surprise! O.M.G. Outrageous Millennial Girls Remix™
- L.O.L. Surprise! O.M.G. Outrageous Millennial Girls Remix™ 2020 Collector Edition

IMPORTANT INFORMATION

- Illustrations are for reference only. Styles may vary from actual contents.
- Multiple characters shown for demonstration. Each sold separately. Only the runts will come together.
- Please keep this manual as it contains important information.
- Before beginning, cover the play area to protect from possible water damage.
- An adult must be present when children are playing with water.
- Do not place the pet in extremely hot water (over 109.4°F/43°C).
- Do not store the pets in direct sunlight for extended periods of time.
- Exposure to sunlight may deactivate color change feature.
- Thoroughly drain the pet on a dry towel in a well-ventilated area after use and before storing.
- Air dry the pet only. Do not place in the dryer or subject to excessive heat.
- **Do not submerge the hair in water to avoid damaging it. When inserting the pet in water, cover the hair or only submerge the body.**
- Do not wash hair with soap and water or subject it to very high heat in any manner, as it will irreparably damage the hair.
- If hair gets wet, use a dry towel to dry off and allow it to air dry.
- Do not apply stickers to other surfaces, as it may not be completely removed.

COLOR -CHANGE

- Cold color change will start at approximately 59°F (15°C), but best results occur if the ice water is chilled to approximately 32°F (0°C) or colder.
- Warm color change will start at approximately 100.4°F (38°C), but best results occur if the water is approximately 104°F (40°C).
- Only the runts will have UV effect.
- For UV effect, place the runts under the sunlight. To return them to their original color, remove from the sunlight.
- **Hair does not change color. Avoid submerging in water.**
- Color change will only work on certain parts of the pet's body or accessories. Not all included accessories change color.
- If color change does not work properly or quickly, the temperature of the pet's body may be too close to the temperature of the water.
- Color change temperatures may vary according to weather conditions.
- The color-change effect of the pet's body has a lengthy, but limited lifespan.

* ⚠ WARNING

An adult must be present and supervise when placing the pet in warm water, as the water may be hot.