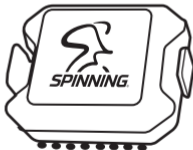




SPINNING CONNECT[™] **CADENCE SENSOR**

OWNER'S MANUAL



DUAL MODE CONNECTIVITY



Thank you for purchasing the Spinning Connect™ Cadence sensor. Knowing your RPM is a helpful training tool for the Spinning® program and this sensor will help keep you on track for your efforts. The Spinning Connect™ Cadence sensor sends signals to both Bluetooth® and ANT+ mobile devices and works in conjunction with the Spinning® app to show your actual and average RPMs. This sensor will also work with other cycling apps and can be attached to an outdoor bike if desired.

This owner's manual will explain all of the key features of the sensor as well as take you through a typical installation onto a Spinner® bike.

Be sure to log on to Spinning.com for all of the latest updates and information about the Spinning® program.

IN THE BOX



Cadence Sensor



Mounting pads
(flat, curved)

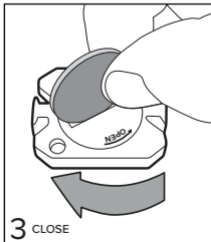
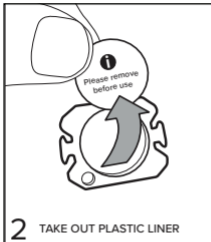
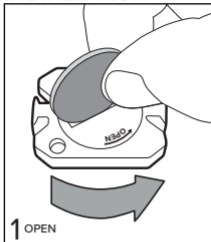


Attachment bands
(large, small)



Owner's Manual

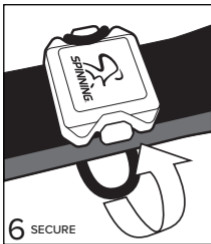
INSTALLATION



WRAP O RING

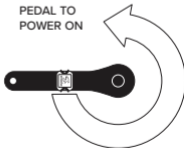


5 PLACE POD ON INSIDE



6 SECURE

PEDAL TO
POWER ON



7 CONNECT



GET IT ON
Google Play

Download on the
App Store

SPINNING® CONNECT CADENCE SENSOR

MAD DOGG ATHLETICS, INC. WARRANTS TO THE ORIGINAL PURCHASER THAT SPINNING® CONNECT ARMBAND HEART RATE MONITOR WILL BE FREE FROM DEFECTS IN WORKMANSHIP AND MATERIALS (SEE LIMITATIONS AND EXCLUSIONS BELOW). THIS WARRANTY DOES NOT COVER LABOR CHARGES ASSOCIATED WITH REPLACING COVERED COMPONENTS OR INSTALLATION. PART(S) REPLACED UNDER THE TERMS OF THIS WARRANTY WILL BE WARRANTIED FOR THE REMAINDER OF THE ORIGINAL WARRANTY PERIOD ONLY. THIS WARRANTY BECOMES EFFECTIVE UPON THE INVOICE DATE OF THE ORIGINAL PURCHASE FROM AN AUTHORIZED SPINNING® DEALER ONLY. THE SPINNING® CONNECT CADENCE SENSOR IS FOR COMMERCIAL AND HOME USE. TO FILE A WARRANTY CLAIM, THE ORIGINAL PURCHASER MAY CONTACT MAD DOGG ATHLETICS, INC. PRODUCT SUPPORT AT (800) 847.SPIN. PROOF OF PURCHASE OR WARRANTY REGISTRATION MAY BE NEEDED IN ORDER FOR MAD DOGG ATHLETICS, INC. TO VERIFY WARRANTY COVERAGE AND ISSUE A RETURN MATERIALS AUTHORIZATION (RMA) NUMBER. PARTS BEING RETURNED TO MAD DOGG ATHLETICS, INC. FOR WARRANTY CREDIT MUST BE SHIPPED PREPAID, ACCOMPANIED BY A PACKING LIST OR TAG BEARING THE RMA NUMBER AND THE CUSTOMER NAME. NO CREDIT WILL BE ISSUED FOR PARTS RETURNED WITHOUT PRIOR AUTHORIZATION FROM MAD DOGG ATHLETICS, INC. TO NOTIFY MAD DOGG ATHLETICS, INC. OF DAMAGES THAT OCCURRED DURING SHIPPING YOU MUST DO SO WITHIN 48 HOURS OF RECEIPT OF GOODS. MAD DOGG ATHLETICS, INC. RESERVES THE RIGHT TO REVIEW DEFECTIVE PART(S). ALL COSTS OF SHIPPING DEFECTIVE PART(S) TO AND FROM MAD DOGG ATHLETICS, INC. FOR INSPECTION SHALL BE BORNE SOLEY BY THE ORIGINAL

PURCHASER. ANY REPAIR OR MODIFICATION OF DEFECTIVE PART(S) BY ANYONE OTHER THAN A MAD DOGG ATHLETICS, INC. TECHNICAL REPRESENTATIVE OR AUTHORIZED SERVICE PROVIDER WILL VOID THIS WARRANTY. IF MAD DOGG ATHLETICS, INC. DETERMINES, IN ITS SOLE DISCRETION, THAT IT IS IMPRACTICAL TO SHIP DEFECTIVE PARTS BACK TO MAD DOGG ATHLETICS, INC., MAD DOGG ATHLETICS, INC. MAY DESIGNATE, IN ITS SOLE DISCRETION, A REPAIR FACILITY TO INSPECT AND ESTIMATE THE COST TO REPAIR SUCH DEFECTIVE PART(S). THE COST, IF ANY, OF SHIPPING DEFECTIVE PART(S) TO AND FROM SUCH REPAIR FACILITY AND OF SUCH ESTIMATE SHALL BE BORNE SOLELY BY THE ORIGINAL PURCHASER. DEFECTIVE PART(S) MUST REMAIN AVAILABLE FOR INSPECTION UNTIL THE CLAIM IS FINALIZED. WHENEVER CLAIMS ARE SETTLED, MAD DOGG ATHLETICS, INC. RESERVES THE RIGHT TO BE SUBROGATED UNDER ANY EXISTING INSURANCE POLICES THE CLAIMANT MAY HAVE. THE SPINNING® CONNECT CADENCE SENSOR HAS A ONE-YEAR WARRANTY AND EXCLUDES BATTERIES AND BATTERY REPLACEMENT.

LIMITATIONS AND EXCLUSIONS

THIS LIMITED WARRANTY DOES NOT APPLY TO COSMETIC DAMAGE, IMPERFECTIONS THAT ARE WITHIN DESIGN SPECIFICATIONS OR THAT DO NOT MATERIALLY ALTER FUNCTIONALITY, OR DAMAGE DUE TO ACTS OF GOD, ACCIDENT, ABUSE, MISUSE, NEGLIGENCE, LACK OF NORMAL MAINTENANCE, EXCESSIVE MOISTURE, ABNORMAL SERVICE OR HANDLING THAT DIFFERS FROM THAT SPECIFIED FOR THE SPINNING® CONNECT ARMBAND HEART RATE MONITOR. IMPROPER INSTALLATION OR IMPROPER OPERATION AND IN ADDITION, ALTERATION OR MODIFICATION OF THE PRODUCT.

DISCLAIMER OF WARRANTIES

LIMITATION OF LIABILITY.

THIS WARRANTY IS IN LIEU OF ALL OTHER WARRANTIES, EXPRESSED OR IMPLIED, INCLUDING WITHOUT LIMITATION, THE IMPLIED WARRANTIES OF MERCHANTABILITY AND FITNESS FOR A PARTICULAR PURPOSE. REPAIR OR REPLACEMENT AS PROVIDED ABOVE SHALL BE THE SOLE AND EXCLUSIVE REMEDY AVAILABLE TO THE PURCHASER. CORRECTION OF DEFECTS, IN THE MANNER AND FOR THE PERIOD OF TIME DESCRIBED ABOVE, SHALL CONSTITUTE COMPLETE FULFILLMENT OF ALL LIABILITIES AND RESPONSIBILITIES OF MAD DOGG ATHLETICS, INC. TO THE PURCHASER WITH RESPECT TO CONTRACT, NEGLIGENCE, ANY INCIDENTAL OR CONSEQUENTIAL DAMAGES BASED UPON BREACH OF ANY EXPRESS OR IMPLIED WARRANTY ON THIS PRODUCT OR OTHERWISE. SOME STATES DO NOT ALLOW THE EXCLUSION OR LIMITATION OF IMPLIED WARRANTIES OR INCIDENTAL OR CONSEQUENTIAL DAMAGES, SO THE ABOVE EXCLUSIONS AND LIMITATIONS MAY NOT APPLY TO YOU. THIS WARRANTY GIVES YOU SPECIFIC LEGAL RIGHTS, AND YOU MAY ALSO HAVE OTHER RIGHTS WHICH MAY VARY FROM STATE TO STATE.

US and International Patents Pending.

©2019 Mad Dogg Athletics, Inc. All rights reserved. SPIN®, Spinner®, Spinning®, SpinPower® and the Spinning® logo  are registered trademarks that are owned by Mad Dogg Athletics, Inc.

CUSTOMER SUPPORT

Please contact the Mad Dogg Athletics® customer service departments listed below:

For customers in North America, South America and Asia Pacific, please contact:

MAD DOGG ATHLETICS, INC.

2111 Narcissus Court

Venice, CA 90291 U.S.A.

Toll-free: 1.800.847.7746

Dialing outside U.S.:

1.310.823.7008

info@spinning.com

Hours: 6:00 AM–5:00 PM PST

For customers in Europe, the Middle East and Africa, please contact:

MAD DOGG ATHLETICS EUROPE B.V.

Scheldeweg 3, 3144 ES Maassluis

The Netherlands

Phone: +31 1059 04508

infoeurope@spinning.com

Hours: 9:00 AM–5:30 PM CET