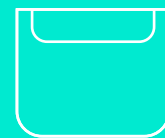
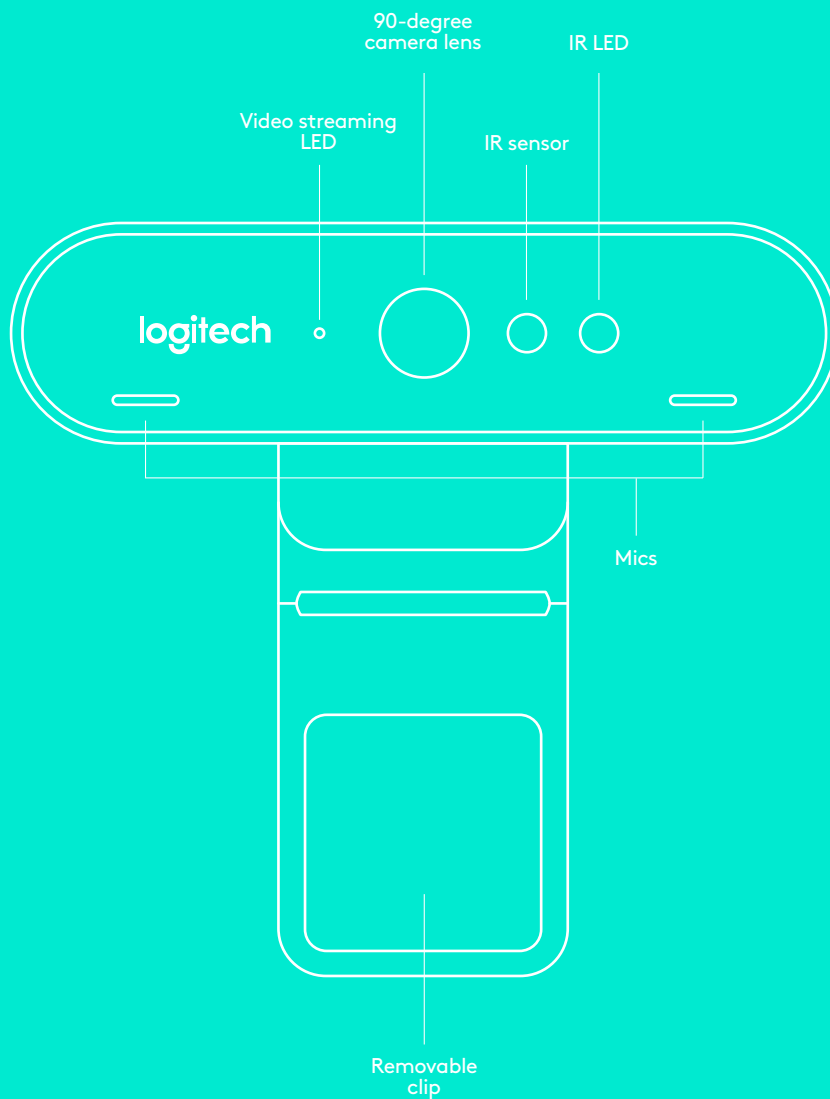




REFERENCE GUIDE

Logitech BRIO

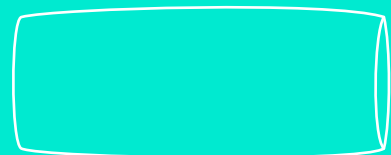
Logitech® delivers our best webcam ever with 4K UHD and 5X zoom for amazing video quality. BRIO is packed with advanced features, like Logitech's RightLight™ 3 with HDR to look great in any illumination from low light to direct sunlight, support for infrared-based facial recognition to strengthen login security, and offers multiple FOV options – 65°, 78°, and 90°.



Privacy shade



Detachable cable
(USB 2.0 or 3.0) Type C compatible



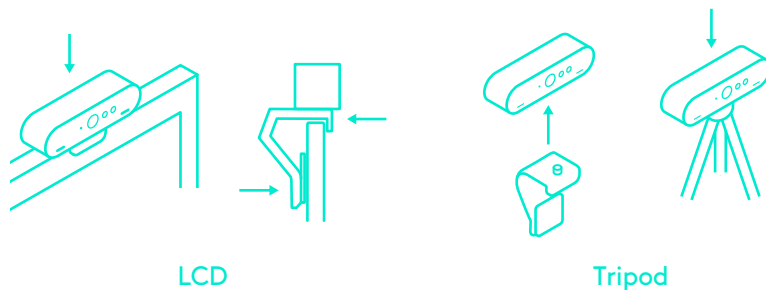
Carrying case

REFERENCE GUIDE

Logitech BRIO

1 SET UP

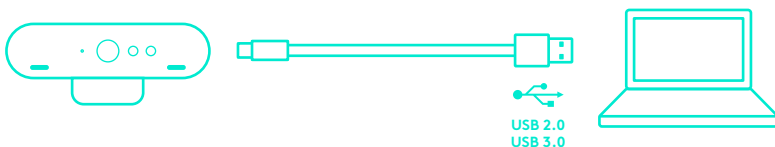
Set up camera on an LCD or on a tripod.



2 CONNECT

Connect cable to the camera and a computer. Please give the camera a few seconds to enumerate in the operating system.

Note: IR and 4K are better achieved with USB 3.0



3 GO

Start your video or audio call from your application. The LEDs on the camera will light when streaming.



WINDOWS HELLO

Your camera is certified for Windows® Hello™ to use facial recognition login for Windows 10.

Note: The camera will also work with other facial recognition software for both Windows and Mac®. Please visit our support website for more details.

The camera and IR sensor/LED supports this feature plug-and-play, following setup in Windows 10. Just look at the camera and the system will log you in.

Note: The IR sensor supports a more reliable login. IR is more reliably supported with USB 3.0

CAMERA SETTINGS APP

Logitech offers downloadable software for adjustable field of view, camera image settings, pan, tilt and zoom, and an integrated background replacement labs project, powered by Personify.

DISCOVER BRIO'S FULL POTENTIAL

Visit www.logitech.com/BRIO or contact us at 800-308-8666.

TROUBLESHOOTING TIPS

For troubleshooting tips, information on software tools and for a diagnostic tool to help troubleshoot any issues you may have with your BRIO, please visit www.logitech.com/support/brio