



EN Instruction manual



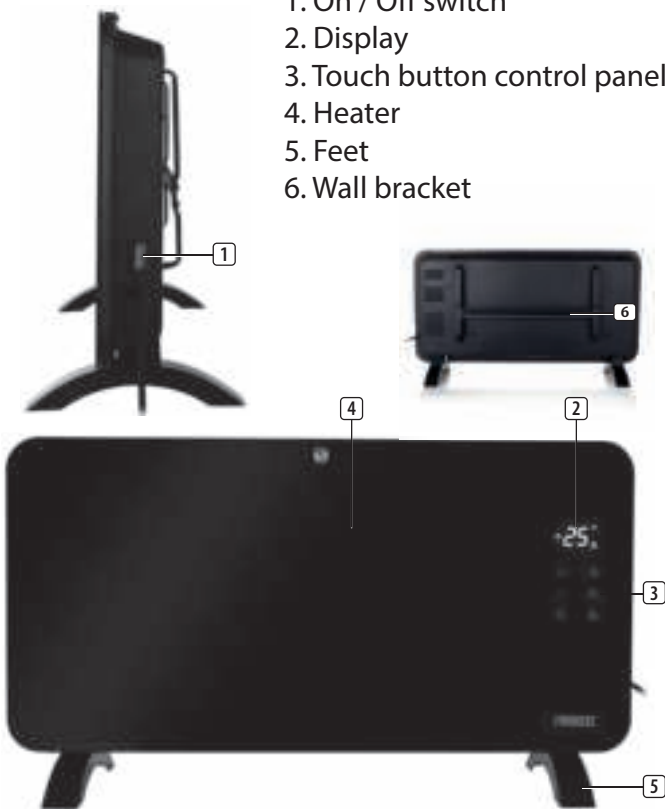
Smart Glass Panel Heater

01.341500.02.001 / 01.341501.02.001


01.342000.02.001 / 01.342001.02.001

PARTS DESCRIPTION

1. On / Off switch
2. Display
3. Touch button control panel
4. Heater
5. Feet
6. Wall bracket



SAFETY

- By ignoring the safety instructions the manufacturer can not be held responsible for the damage.
- If the supply cord is damaged, it must be replaced by the manufacturer, its service agent or similarly qualified persons in order to avoid a hazard.
- Never move the appliance by pulling the cord and make sure the cord can not become entangled.
- The appliance must be placed on a stable, level surface.
- The user must not leave the device unattended while it is connected to the supply.
- This appliance is only to be used for household purposes and only for the purpose it is made for.
- This appliance shall not be used by children aged less than 8 years. This appliance can be used by children aged from 8 years and above and persons with reduced physical, sensory or mental capabilities or lack of experience and knowledge if they have been given supervision or instruction concerning use of the appliance in a safe way and understand the hazards involved. Children shall not play with the appliance. Keep the appliance and its cord out of reach of children aged less than 8 years. Cleaning and user maintenance shall not be made by children unless older than 8 and supervised.
- To protect yourself against an electric shock, do not immerse the cord, plug or appliance in the water or any other liquid.
-  **WARNING:** In order to avoid overheating, do not cover the heater.
- **CAUTION:** Some parts of this product can become very hot and cause burns. Particular attention has to be given where children and vulnerable people are present.
- Do not use this heater in the immediate surroundings of a bath, a shower or a swimming pool.
- Joists, beams and rafters shall not be cut or notched to install the appliance.
- Please do not install the appliance close to curtains and other combustible materials. This could cause a fire.
- The appliance shall, under no circumstances, be covered with insulating material or similar material.

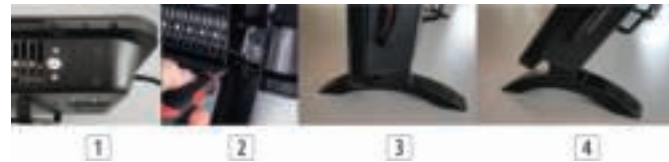
- The heater must not be located immediately below a socket-outlet.
- Do not use this heater if it has been dropped.
- Do not use if there are visible signs of damage to the heater.
- Use this heater on a horizontal and stable surface, or fix it to the wall, as applicable.
- **WARNING:** Do not use this heater in small rooms when they are occupied by persons not capable of leaving the room on their own, unless constant supervision is provided.
- **WARNING:** To reduce the risk of fire, keep textiles, curtain, or any other flammable material a minimum distance of 1m from the air outlet.
- The heater needs to be installed so that the switches and other controls cannot be touched by a person in the bath or shower.

INSTALLATION

Foot assembly

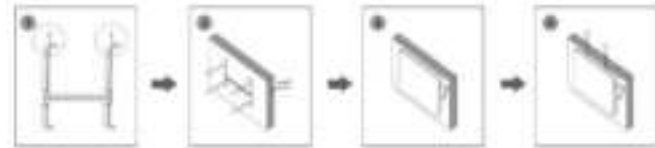
- Before using the heater, the feet must be fitted to the unit. (image 1)
- These are to be attached to the base of the heater using the 8 ST12x4mm screws provided. (image 2)

- Take care to ensure that the feet are located correctly on the bottom end of the heater.
- The heater should stand vertically once the feet are installed (image 3). If the heater tilts backwards (image 4) then please remove the feet and rotate them before fitting again.



Wall mounting

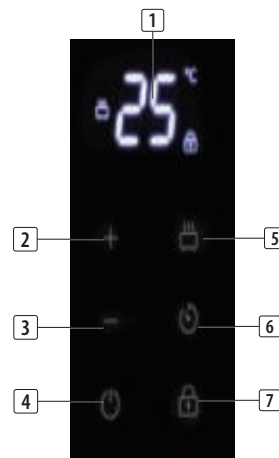
- Please note that the product must be installed at least 15 cm from the floor and 50 cm from the ceiling.
- First install the bracket with the provided screws. (image 1)
- Drill the holes in the wall on each side, then insert the plastic expanded plugs and fix the bracket in the wall with the screws provided. (image 2)
- Place the heater in a suitable position and ensure that the holes are aligned with the bracket. (image 3)
- Tighten the screws on top of the bracket. (image 4)



BEFORE THE FIRST USE

- Place the device on a flat stable surface and ensure a minimum of 10cm free space around the device. This device is not suitable for installation in a cabinet or for outside use.
- Put the power cable into the socket. (Note: Make sure the voltage which is indicated on the device matches the local voltage before connecting the device. Voltage 220V-240V 50/60Hz)
- When the device is turned on for the first time, a slight odour will occur. This is normal, ensure adequate ventilation. This fragrance is only temporary and will disappear soon.
- During heating up and cooling down there may be some noises caused by the heater casing expanding and contracting, this is normal and does not indicate any fault.

DISPLAY/TOUCH BUTTON FUNCTIONS



| | |
|---|------------------------|
| 1 | Display |
| 2 | Temperature “+” button |
| 3 | Temperature “-” button |
| 4 | Power button |
| 5 | Mode button |
| 6 | Timer button |
| 7 | Child lock button |

USE

- Push the On/Off switch on the side of the heater to turn the heater on.
- Press the power touch button to turn on the display and show the current setting.
- Use the mode button to adjust to low or high power. The upper symbol on the display is for high power, the lower one indicates the low power setting.
- Press 'temperature up (+)' or 'temperature down (-)' buttons to regulate the temperature you desired. The temperature can be set between 15°C and 35°C.
- Press the timer button to select the desired range between 1 hour to 24 hours. The set time will disappear after a few seconds.
- To enable the child lock HOLD down the lock button for 5 seconds and the lock symbol will appear on the display.
- To disable the child lock HOLD the lock button again for 5 seconds and the lock symbol will disappear.
- The child lock can be overridden by unplugging the heater or by switching it off using the main ON/OFF switch on the side of the device.
- Once the child lock is active you cannot operate any of the heater touch functions.

TIP-OVER PROTECTION

- Should the heater be tipped over during use then the heater will automatically turn off.
- If the unit has been tipped over then it cannot be turned on from the Climate app or via a smart speaker.
- To reset the unit, place it upright on a stable surface and the heater will automatically power on and connect to WiFi if previously setup. In around 2 minutes the device will be ready to be controlled via the app or smart speaker again.

CHILD LOCK AND SMART SPEAKER

- If the child lock is active then voice control from a smart speaker will be disabled. You would need to disable the child lock to enable voice control.
- **WARNING:** Ensure the device cannot be operated by unsupervised persons.



USING THE HEATER WITH CLIMATE APP

- The heater can be used manually with its touch controls or you can use a smart phone or smart speaker to control it. Before you begin, ensure the HomeWizard Climate app is downloaded. The HomeWizard Climate app is available on Android and iOS.

Pair your heater to HomeWizard Climate app

- Make sure your heater is powered.
- Open HomeWizard Climate APP.
- Create an account or if you already have a HomeWizard account, please log in using those details.
- Click "Add new Climate Device" to add a new device.
- Select the device you wanted to connect.
- Follow the instructions on the app to connect the heater.
- To control your device with voice using a smart speaker please refer to the manufacturer's instructions on how to enable a skill through your device.

Technical Specification

| | | |
|-----------|-----------|------------|
| Details | 341500/1 | 342000/1 |
| Voltage | 220-240V | 220-240V |
| Frequency | 50/60Hz | 50/60Hz |
| Power | 750/1500W | 1000/2000W |
| IP Code | IP24 | IP24 |

CLEANING AND MAINTENANCE

- Before cleaning, unplug the appliance and wait for the appliance to cool down.
- Clean the appliance with a damp cloth. Never use harsh and abrasive cleaners, scouring pad or steel wool, which damages the device.
- Clean the two air outlets (above and below) by using a vacuum cleaner to remove dust from inside.

DECLARATION OF CONFORMITY

- Hereby, Smartwares Europe declares that the radio equipment type 341500 / 341501 / 342000 / 342001 are in compliance with Directive 2014/53/EU
- The full text of the EU declaration of conformity is available at the following internet address: www.princesshome.eu/doc

ENVIRONMENT



■ This appliance should not be put into the domestic garbage at the end of its life, but must be offered at a central point for the recycling of electric and electronic domestic appliances. This symbol on the appliance, instruction manual and packaging puts your attention to this important issue. The materials used in this appliance can be recycled. By recycling of used domestic appliances you contribute an important push to the protection of our environment. Ask your local authorities for information regarding the point of recycling.

FOR HOUSEHOLD USE ONLY
SAVE THESE INSTRUCTIONS

Product support

Should you have any question or issue with this product please contact our UK team:

Email: technical.sl.uk@smartwaresgroup.com

Phone: 0345 230 1231 (local rate)

Open Monday – Friday 10am till 4pm except Thursdays 12-30am till 4pm.

You can find all available information and spare parts at <http://www.princesshome.co.uk>

[WEEE Logo]



This product is only suitable for well insulated spaces or occasional use.

Wireless technology: Wi-Fi

Operating frequency: 2412MHz~2472MHz

Max. radio-frequency power: 17.30dBm



www.princesshome.co.uk

© Princess 2019