

5KSMMGA



**KitchenAid**



<b>English</b> .....	5
<b>Deutsch</b> .....	15
<b>Français</b> .....	25
<b>Italiano</b> .....	35
<b>Nederlands</b> .....	45
<b>Español</b> .....	55
<b>Português</b> .....	65
<b>Ελληνικά</b> .....	75
<b>Svenska</b> .....	85

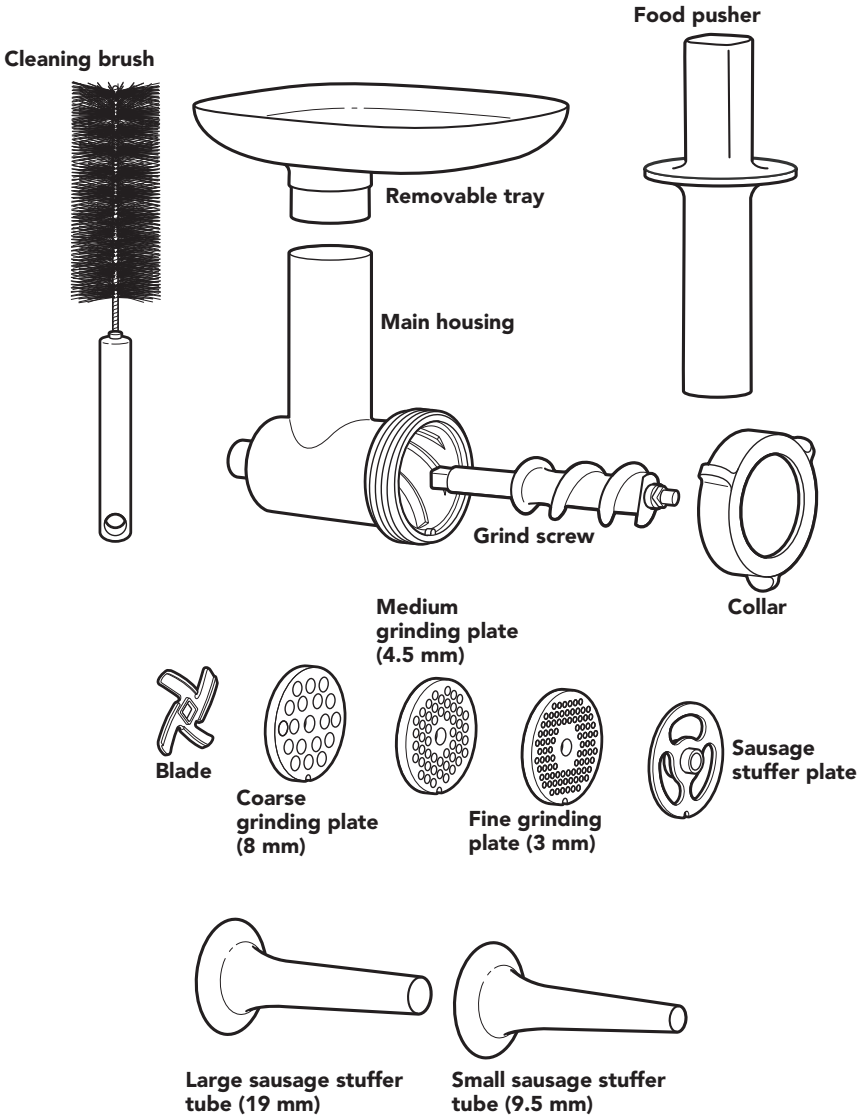


# TABLE OF CONTENTS

<b>PARTS AND FEATURES</b> .....	6
Parts and accessories.....	6
<b>STAND MIXER ATTACHMENT SAFETY</b> .....	7
Important safeguards .....	7
Waste disposal.....	9
<b>USING THE METAL FOOD GRINDER ATTACHMENT</b> .....	9
Guide to grinding .....	9
Assembling the Metal Food Grinder attachment .....	10
Attaching the metal Food grinder attachment to the Stand Mixer .....	10
Grinding with the Metal Food Grinder attachment .....	11
Assembling the sausage stuffer.....	12
Using the sausage stuffer .....	12
<b>TIPS FOR GREAT RESULTS</b> .....	13
Helpful hints.....	13
<b>CARE AND CLEANING</b> .....	13
<b>WARRANTY AND SERVICE</b> .....	14

# PARTS AND FEATURES

## PARTS AND ACCESSORIES



# STAND MIXER ATTACHMENT SAFETY

## Your safety and the safety of others are very important.

We have provided many important safety messages in this manual and on your appliance. Always read and obey all safety messages.



This is the safety alert symbol.

This symbol alerts you to potential hazards that can kill or hurt you and others.

All safety messages will follow the safety alert symbol and either the word "DANGER" or "WARNING." These words mean:

 **DANGER**

**You can be killed or seriously injured if you don't immediately follow instructions.**

 **WARNING**

**You can be killed or seriously injured if you don't follow instructions.**

All safety messages will tell you what the potential hazard is, tell you how to reduce the chance of injury, and tell you what can happen if the instructions are not followed.

## IMPORTANT SAFEGUARDS

**When using electrical appliances, basic safety precautions should always be followed, including the following:**

1. Read all instructions. Misuse of appliance may result in personal injury.
2. This appliance is not intended for use by persons, including children, with reduced physical, sensory, or mental capabilities, or lack of experience and knowledge, unless they have been given supervision or instructions concerning use of the appliance in a safe way and understand the hazards involved.
3. Europe Only: Appliances can be used by persons with reduced physical, sensory, or mental capabilities or lack of experience and knowledge if they have been given supervision or instruction concerning use of the appliance in a safe way and understand the hazards involved. Children shall not play with the appliance.
4. Europe Only: This appliance shall not be used by children. Keep the appliance and its cord out of reach of children.

## STAND MIXER ATTACHMENT SAFETY

5. Turn the Stand Mixer OFF (and detach the Metal Food Grinder attachment from the Stand Mixer) after each use of the attachment and before cleaning. Make sure motor stops completely before disassembling.
6. Avoid contacting moving parts. Keep fingers out of discharge opening.
7. Never leave the appliance unattended while it is in operation.
8. The use of attachments not recommended or sold by KitchenAid may cause fire, electric shock, or injury.
9. Never feed food by hand. Always use the food pusher.
10. Blades are sharp. Handle carefully.
11. Do not use fingers to scrape food away from discharge disc while appliance is operating. Cut-type injury may result.
12. Refer to the “Care and cleaning” section for instructions on cleaning the surfaces in contact with food.
13. Also see the Important Safeguards section included in the Stand Mixer Use and Care Guide.
14. This appliance is intended to be used in household and similar applications such as:
  - staff kitchen areas in shops, offices or other working environments;
  - farmhouses;
  - by clients in hotels, motels and other residential type environments;
  - bed and breakfast type environments.

**SAVE THESE INSTRUCTIONS**




# STAND MIXER ATTACHMENT SAFETY

## WASTE DISPOSAL

### Disposal of packing material

The packing material is 100% recyclable and is marked with the recycle symbol

 The various parts of the packing must therefore be disposed of responsibly and in full compliance with local authority regulations governing waste disposal.

# USING THE METAL FOOD GRINDER ATTACHMENT

## GUIDE TO GRINDING

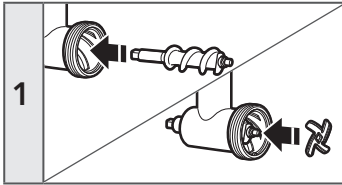
**NOTE:** None of the parts and accessories of this KitchenAid Metal Food Grinder attachment (model 5KSMMGA) are compatible with the parts and accessories of the KitchenAid Food Grinder attachment (models 5FGA, 5SSA, 5FT, 5FVSP, 5FVDFGA, 5KSMFPPA, 5KSMGSSA) and vice versa.

USE THESE PARTS	WITH THESE PARTS	SUGGESTED USES	SPEED
Fine grinding plate (3 mm)	Blade	Cooked meats for spreads, hard cheeses (e.g. Parmesan), bread crumbs	4
Medium grinding plate (4.5 mm)	Blade	Raw or cooked meats, meats for sausages	4
Coarse grinding plate (8 mm)	Blade	Raw meats for burgers and chili, vegetables for salsas and sauces	4
Small sausage stuffer tube (9.5 mm)	Sausage stuffer plate	Breakfast sausage, smaller sausages	4
Large sausage stuffer tube (19 mm)	Sausage stuffer plate	Bratwurst, larger sausages	4

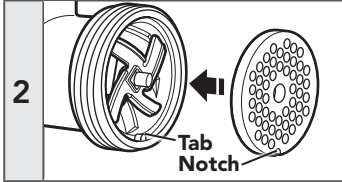
# USING THE METAL FOOD GRINDER ATTACHMENT

## ASSEMBLING THE METAL FOOD GRINDER ATTACHMENT

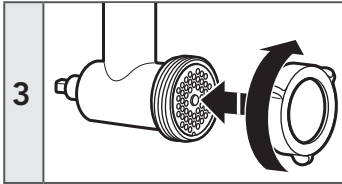
Wash all parts with warm, soapy water and dry thoroughly before use.



1 Insert the grind screw into the main housing. Then, place the blade over the end of the grind screw. The blade should fit entirely inside the housing. If it doesn't, pull it off, turn it over, and place it again.

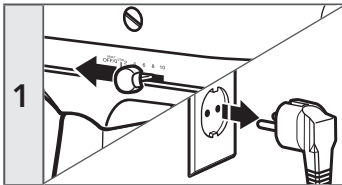


2 Place grinding plate over the blade, matching the notch of the plate with the tab on the bottom of the main housing.

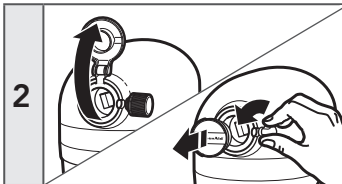


3 Place the collar on the main housing, turning clockwise by hand until secured but not tightened.

## ATTACHING THE METAL FOOD GRINDER ATTACHMENT TO THE STAND MIXER



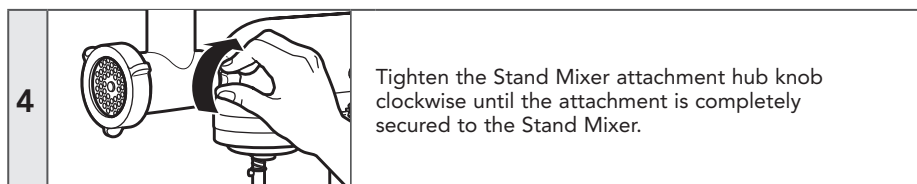
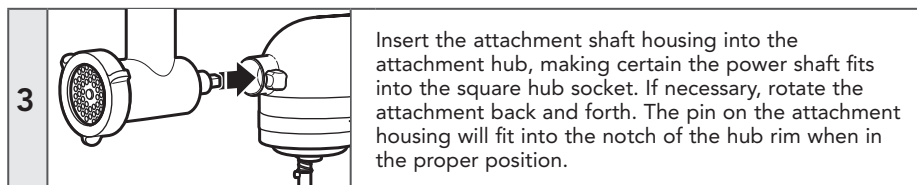
1 Turn the Stand Mixer off and unplug.



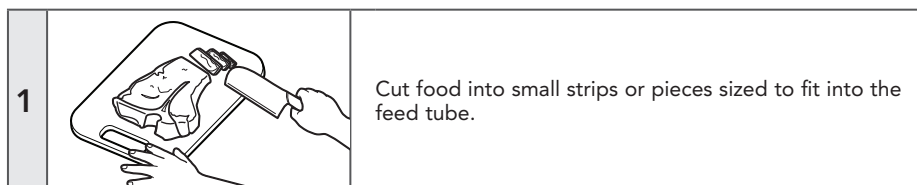
2 For Stand Mixers with a hinged attachment hub cover: Flip up to open.

For Stand Mixers with a removable attachment hub cover: Turn the attachment knob counterclockwise to remove attachment hub cover.

## USING THE METAL FOOD GRINDER ATTACHMENT




## GRINDING WITH THE METAL FOOD GRINDER ATTACHMENT

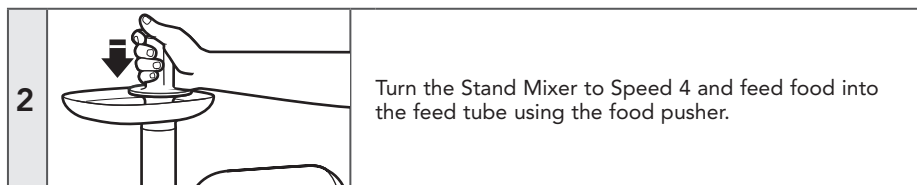


⚠ WARNING

Rotating Blade Hazard

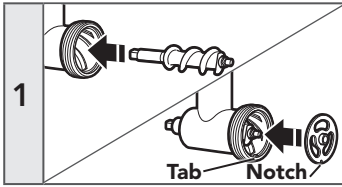


- Always use food pusher.**
- Keep fingers out of openings.**
- Keep away from children.**
- Failure to do so can result in amputation or cuts.**

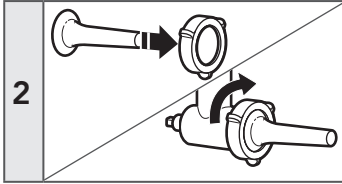


# USING THE METAL FOOD GRINDER ATTACHMENT

## ASSEMBLING THE SAUSAGE STUFFER



Insert the grind screw into the main housing. Then insert the sausage stuffer plate over the end of the grind screw, matching the notch of the plate with the tab on the bottom of the main housing.

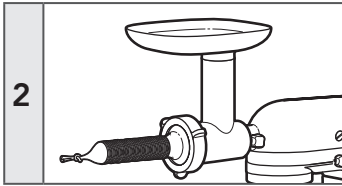


Insert the desired sausage stuffer tube (large or small) through the collar. Then, place the collar and tube assembly on the main housing, turning the ring by hand until secured but not tightened.

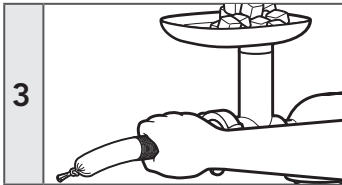
## USING THE SAUSAGE STUFFER



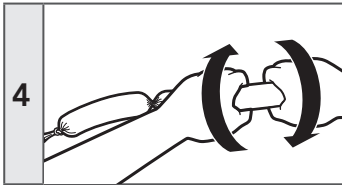
Feed meat into the Metal Food Grinder attachment before adding the sausage stuffer tube. This will eliminate air pockets.



Lubricate the sausage stuffer tube and slide one casing over the tube, leaving about 10 cm to tie off the end.



Turn the Stand Mixer on to Speed 4 and slowly push the meat through the grinder. Hold the casing firmly as it fills. If air bubbles are created during the fill process, use a pin or needle to pop the bubble.



Run meat through until 10-15 cm of casing is left unfilled. Turn off the Stand Mixer and tie the remaining end of the casing, or use a tie string.

**NOTE:** For segmented-type sausage (e.g., bratwurst), twist casing ends in alternating directions at desired sausage link length.

# TIPS FOR GREAT RESULTS

## HELPFUL HINTS

For best results, grind meat that is very cold or partially frozen. The grinder parts can be pre-chilled in the refrigerator or freezer before use to maintain a cold grinding temperature.

For more tender results, some meats can be ground twice. However, fatty meats should be ground only once.

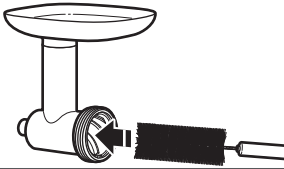
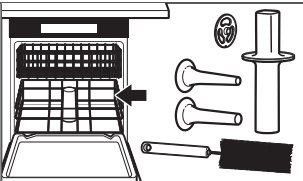
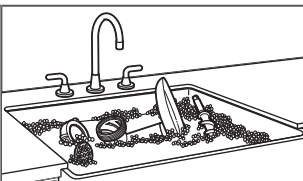
To grind bread for crumbs, be sure that bread is either oven-dried thoroughly to remove all moisture, or not dried at all. Partially dried bread may jam the Metal Food Grinder attachment.

**NOTE:** Very hard, dense foods such as completely dried homemade bread should not be ground in the Metal Food Grinder attachment. Homemade bread should be ground fresh and then oven- or air-dried.

If using natural casings, it is recommended to first soak them in cold water for 30 minutes to remove excess salt, then rinse several times by running cold water through the entire length of the casing. For best results for sausage, refer also to the instructions that came with the casings.

## CARE AND CLEANING

### CLEANING THE METAL FOOD GRINDER ATTACHMENT AND ACCESSORIES

1		<p>Use the cleaning brush to clean the main housing and other accessories, including the grinding plates.</p>
2		<p>The following parts are dishwasher-safe, top rack only: sausage stuffer plate, sausage stuffer tubes, cleaning brush, and food pusher.</p>
3		<p>The following parts should be hand-washed only, using warm, soapy water and drying thoroughly: main housing, grind screw, collar, tray, grinding plates, and blade.</p>

# WARRANTY AND SERVICE

## KITCHENAID STAND MIXER ATTACHMENT WARRANTY

Length of Warranty:	KitchenAid Will Pay For:	KitchenAid Will Not Pay For:
Europe, Middle East and Africa: <b>5KSMMGA</b> Two years full warranty from date of purchase.	The replacement parts and repair labour costs to correct defects in materials or workmanship. Service must be provided by an Authorised KitchenAid Service Centre.	<b>A. Repairs when Stand Mixer Attachment is used for operations other than normal household food preparation.</b> <b>B. Damage resulting from accident, alterations, misuse, abuse, or installation/operation not in accordance with local electrical codes.</b>

**KITCHENAID DOES NOT ASSUME ANY RESPONSIBILITY FOR INDIRECT DAMAGES.**

### CUSTOMER SERVICE

For any questions, or to find the nearest Authorised KitchenAid Service Centre in your country, please find our contact details below.

Number for general questions:  00800 3810 4026

#### **In other countries:**

For all product related questions and after sales matters, please contact your dealer to obtain the name of the nearest Authorised KitchenAid Service/Customer Centre.

**For more information, visit our website at:**

**[www.KitchenAid.co.uk](http://www.KitchenAid.co.uk)**  
**[www.KitchenAid.eu](http://www.KitchenAid.eu)**

©2018 All rights reserved. KITCHENAID and the design of the stand mixer are trademarks in the U.S. and elsewhere.