

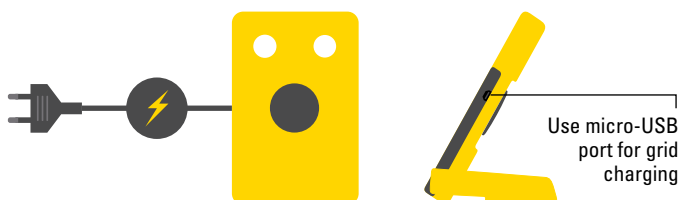


# WAKA WAKA POWER+ MANUAL

SOLAR-POWERED CHARGER + LIGHT

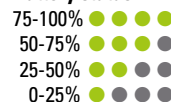
WAKA-WAKA.COM

## GRID CHARGING



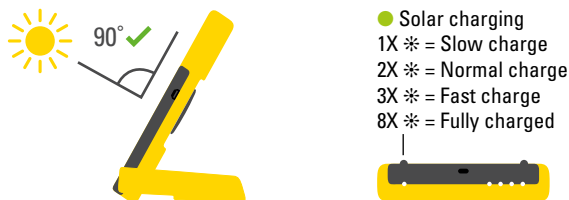
- Use a micro-USB charging cable to charge the WakaWaka via the grid. For best results use a WakaWaka micro-USB cable and the 2.1A USB-port in a WakaWaka World Charger.
- An empty WakaWaka Power+ needs about 3 hours to fully recharge from the grid via the micro-USB adapter.

### Battery status



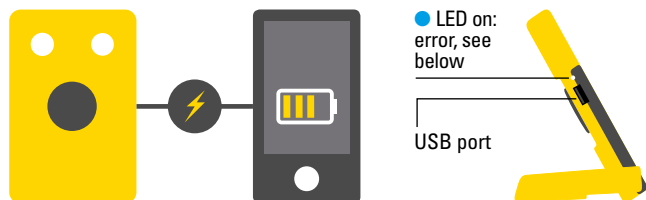
- When grid charging the battery status indicator lights turn off when the WakaWaka is fully charged.
- If your WakaWaka Power+ had been stored for a longer period it can go into hibernation. Charge the WakaWaka Power+ via the grid or put it in the sun to wake it up and give it a power boost.

## SOLAR CHARGING



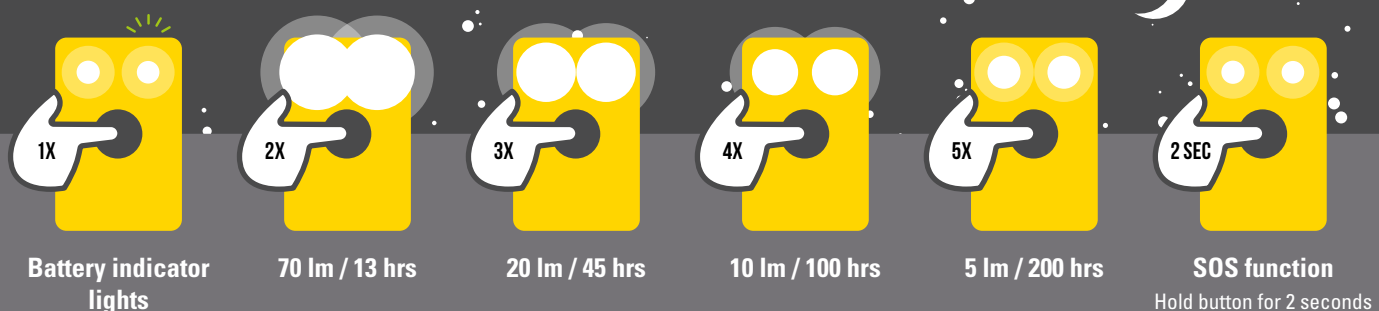
- In direct sunlight it can take up to 18 hours to fully charge the WakaWaka.
- Position the WakaWaka Power+ facing the sun at an angle of 90 degrees for maximum charge speed. It charges from UV light, so depending on the weather, charging time can be affected. Double glazing increases the charging efficiency dramatically (up to 70%).

## CHARGING EXTERNAL DEVICE

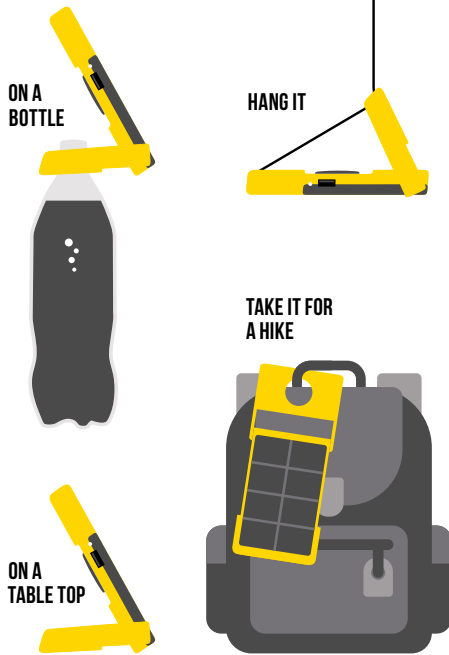


- **ERROR** ● LED on: the WakaWaka Power+ is too warm or too cold or the battery is over discharged.
- The battery of the WakaWaka Power+ has a capacity of 3,000 mAh. External devices with a larger battery cannot be fully charged.
- Use a WakaWaka micro-USB or a WakaWaka Lightning cable to charge your device.

## USING THE LED LIGHTS



## FLEXIBLE POSITIONING

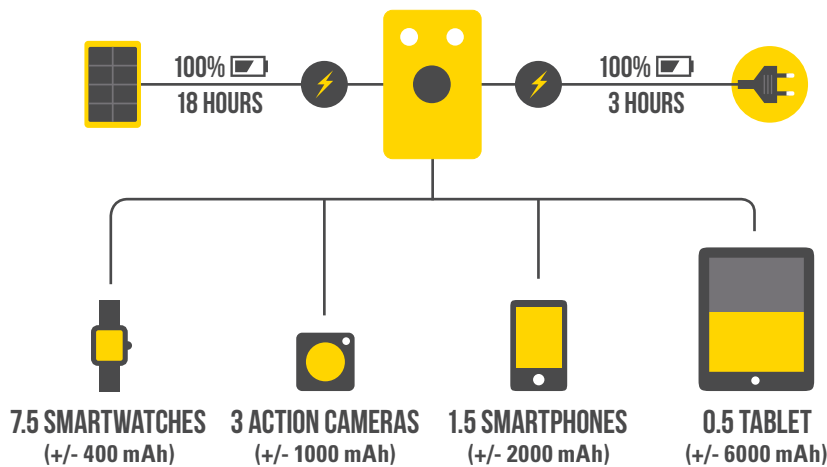


## SPECIFICATIONS

Battery	3,000 mAh LiPo   3.7V   11.1Wh
Solar panel	1W   22% efficiency SunPower cell
Solar Charge time	12 - 18 hours
LED efficiency	110 lumens/W
LED run time	70 lm: 13 hrs   20 lm: 45 hrs   10lm: 100 hrs   5 lm: 200 hrs
Average smartphone charge	1.5 x
Connectors	USB power in 2.1A   USB out 2.1A
Weight	180 grams
Dimensions	122 x 77 x 16 mm
Color	Black and yellow

## CHARACTERISTICS & SPECIAL FEATURES

Fully charged in 3 hours from the grid or 18 hours in the sun\*



\* Based on optimal sun conditions. Charge speed may vary.

## CAUTION



## FOLLOW US



## SUPPORT & CONTACT



For any questions, returns and/or support check out our FAQ page [waka-waka.com/faq/](http://waka-waka.com/faq/) or send us an email [support@waka-waka.com](mailto:support@waka-waka.com)

Having problems with your WakaWaka Light? Read the tips & tricks [waka-waka.com/tricks/wwwp](http://waka-waka.com/tricks/wwwp)

## WARRANTY

### 1. Limited warranty:

WakaWaka warrants to the original purchaser that this WakaWaka product will be free from defects in workmanship and material under normal consumer use during the applicable warranty period identified in Paragraph 2, below, subject to the exclusions set forth in Paragraph 4, below. This warranty statement sets forth WakaWaka's total and exclusive warranty obligation. We will not assume, nor authorize any person to assume for us, any other liability in connection with the sales of our products.

### 2. Warranty period:

The warranty period for the WakaWaka product is 2 years. The warranty period starts on the purchase date by the original purchaser. The sales receipt from

this purchase, or other reasonable documentary proof, is required in order to establish the start date of the warranty period.

### 3. Remedy:

WakaWaka will repair or replace (at WakaWaka's option and expense) any WakaWaka product that fails to operate during the applicable warranty period due to a defect in workmanship or material.

### 4. Exclusions:

WakaWaka's warranty does not apply to any product that is misused, abused, modified, damaged by accident, or used for anything other than normal consumer use as authorized in WakaWaka's then-current product literature.