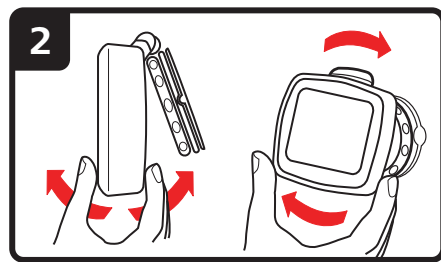
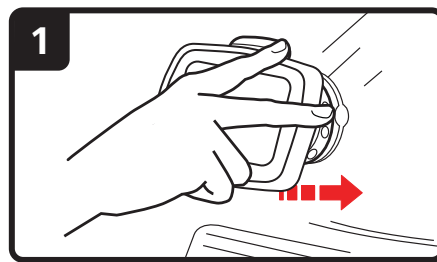

TomTom Start

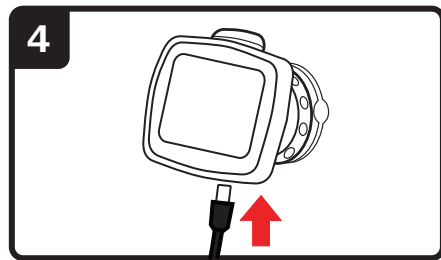
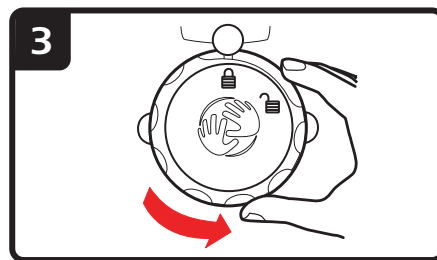
1. Getting started

Mounting your navigation device

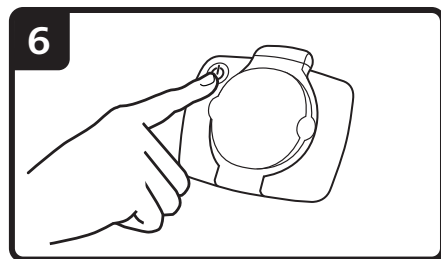
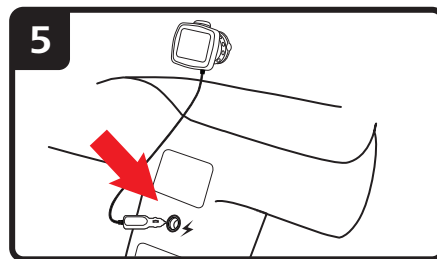
1. Push the EasyPort™ Mount on your TomTom Start against the windscreen in your car.



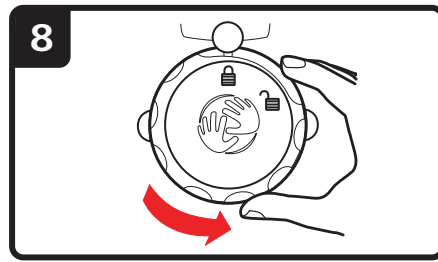
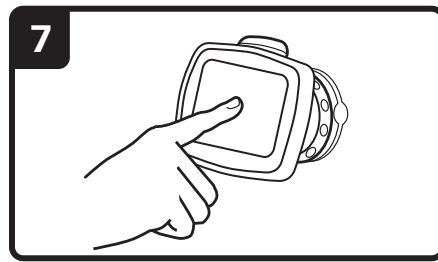
2. Adjust the angle of your device.
3. Lock the EasyPort Mount by twisting the base.



4. Insert the Car Charger into your device.
5. Insert the Car Charger into the cigarette lighter in your car.



6. Switch your device on by pressing the On/Off button on the back of your device.
7. You now have to answer some questions to set up your device. Tap the screen to answer the questions.



8. To remove the Mount from your windscreen, first unlock the EasyPort Mount, then gently pull one of the tabs. The Mount comes away from the windscreen.

GPS reception

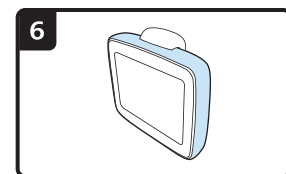
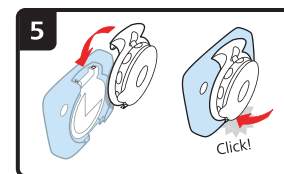
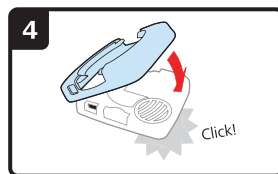
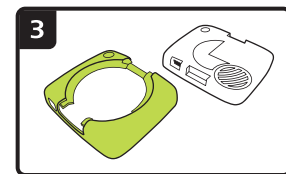
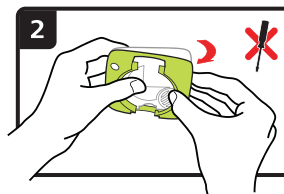
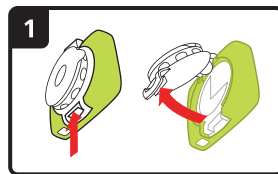
When you first start your TomTom Start navigation device, the device may need a few minutes to determine your GPS position and show your current position on the map. In future, your position will be found much faster, usually within a few seconds.

To ensure good GPS reception, you should use your device outdoors. Large objects such as tall buildings can sometimes interfere with reception.

Changeable covers

You can personalise your TomTom Start by changing the covers. Go to **tomtom.com/startskins** to check which covers are available.

To remove the cover from the device, first remove the mount. Then hold either side of the cover and push through the centre of the cover to detach the device from the cover as shown in the diagram.



Troubleshooting

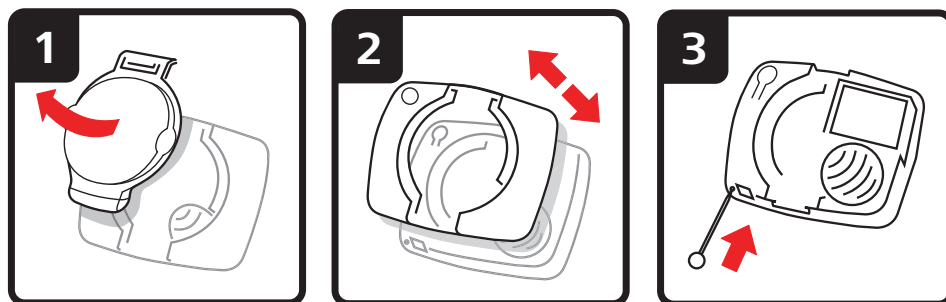
In rare cases, your TomTom Start navigation device may not start correctly or may stop responding to your taps.

First, check that the battery is properly charged. To charge the battery, connect your device to the car charger.

If this does not solve the problem, you can reset the device. To do this, do the following.

1. Remove the Mount from the device by pressing the release button on the Mount.

2. Pull the back cover off the device by holding either side of the cover and pushing the device through the centre of the cover.
3. Use a straightened paper clip, or something similar, to push the reset button. The reset button is on the bottom of your device.



2. Driving View

The Driving View shows your current location on the map together with detailed information such as current speed and route instructions.

Tap the centre of the screen at any time to open the Main Menu.



A Your current position.

B The name of the next major road or road sign information, if applicable.

C Your speed and the speed limit, if known.

Tap this panel on the status bar to adjust the volume.

When the volume control is displayed, the next route instruction is spoken. This is a useful way to hear and adjust the current volume level.

D Next route instruction.

Tap this panel on the status bar to switch between 2D and 3D views of the Driving View.

E The name of the street you are on.

F Information about your journey: journey time, remaining distance and arrival time.

Tap this panel on the status bar to see a route summary.

3. Main Menu

The Main Menu is the starting point for planning a route, looking at a map or changing your device settings.

To open the Main Menu from the Driving View, tap the centre of the Driving View screen.



To return to the Driving View from the Main Menu, tap **done**.

Main Menu buttons

The following buttons are shown on the Main Menu.



Plan route

Tap this button to plan a new route.

This button is shown when you have not planned a route.



Change route

Tap this button to plan a new route.

This button is shown when you have planned a route.



Browse map

Tap this button to look at the map.

Sound



sound

Tap this button to turn the sound off.



sound

Tap this button to turn the sound on.

Night / Day



night

Tap this button to set the night colour scheme, which reduces the brightness of the screen and shows the map using dark colours.

This is useful when driving at night or in dark environments such as long tunnels.



day

Tap this button to set the day colour scheme, which increases the brightness of the screen and shows the map using bright colours.

Options



options

Tap this button to adjust the settings for your device.

For more information, see the chapters **Options** and **Advanced settings**.

Help



help

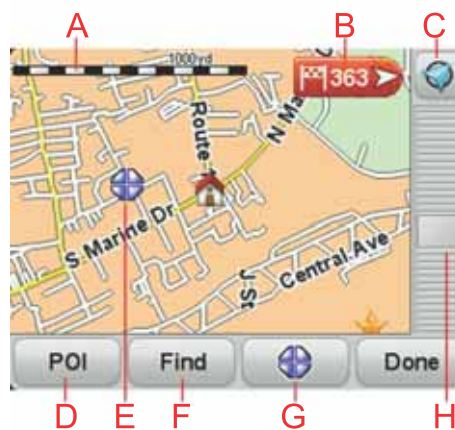
Tap this button to see the contact details and plan a route to an emergency services centre or another specialist service such as a veterinary service.

For more information, see the chapter **Help**.

4. Browse Map

To look at the map in the same way as you might look at a traditional paper map, tap **Browse map** in the Main Menu.

You can use your finger to move the map by touching the screen and sliding your finger across the screen.



A The scale bar

B Marker

Markers point to your current location, your home location and your destination. The marker shows the distance to the location.

Tap a marker to centre the map on the location pointed to by the marker.

C GPS button

Tap this button to centre the map on your current position.

D The POI button

Tap this button to select which POIs are shown.

E The cursor

F The Find button

Tap this button to find specific addresses.

G The Cursor button

Tap this button to plan a route to the cursor position, create a Favourite at the cursor position or find a Point of Interest near to the cursor position.

H The zoom bar

Zoom in and out by moving the slider.

5. Planning a route

1. Tap the screen to open the Main Menu.
2. Tap **Plan route**.

You are asked if you want to leave from where you are.

Tap **YES** to plan a route from your current location. You will probably plan most of your routes this way.

Tap **NO** to select another starting point. You might decide to do this so you can view the route before you intend to start travelling.

You can select your destination in different ways.

In this example, we'll enter an address.

3. Tap **Address**.
4. Start to type the name of the town and tap on the name when it appears in the list.



Tip: When you plan a route for the first time you are asked to select the country or state. Your choice is saved and used for all future routes. You can change this setting by tapping on the flag and selecting a new country or state.

5. Enter the street name in the same way and then enter the house number.

Tip: The name at the top of the list is a city/town centre. Instead of entering the street name and house number, you can tap the name at the top of the list to set the address as the town centre.

The route is planned and a summary of the route is shown.



6. Tap **Done**.

Your navigation device is ready to guide you to your destination.

6. Finding alternative routes

Once you have planned a route, you may want to change something about the route, without changing your destination.

Why change the route?

Maybe for one of these reasons:

- You can see a roadblock or a line of traffic ahead.
- You want to travel via a particular location, to pick someone up, stop for lunch or fill up with petrol.
- You want to avoid a difficult junction or a road you don't like.



Change route

Tap this button in the Main Menu to change the currently planned route.



Avoid roadblock

Tap this button if you can see a roadblock or a line of traffic ahead. You then have to choose how much of the route ahead you want to avoid.

Choose from the different options. Your Start will recalculate your route avoiding the section of the route for the distance you selected.

Don't forget that once a new route is calculated, you may have to turn off the road you are on very soon.

If the roadblock suddenly clears, tap **Recalculate original** to return to your original route.



Calculate alternative

Tap this button to calculate an alternative to the route already planned.

Your Start will look for another route from your current location to your destination.

If you decide you would prefer to use the original route after all, tap **Recalculate original**.

Why would I need to do this?

Apart from the roads near your position and near your destination, the new route will use totally different roads to reach your destination. This is an easy way of calculating a totally different route.



Recalculate original

Tap this button to return to the original route without deviations to avoid roadblocks or travelling via particular locations.



Travel via...

Tap this button to change your route so that it passes a particular location, perhaps to pick someone up on the way. When you do this, a marker is shown on the map for the location you choose the travel via.

You choose the location you want to pass in the same way as you choose a destination. So you can select from all the same options: for example, **Address, Favourite, Point of Interest** and **Point on map**.

Your Start will calculate a new route to your destination that passes the location you chose. Unlike your final destination, your Start does not inform you when you pass by this location.



Plan route

Tap this button to plan a new route. When you plan a new route, the old one will be deleted.



Clear route

Tap this button to delete the current route.

7. Options

You can change the way your TomTom Start looks and behaves.

Tap **Options** in the Main Menu.

Change voice



Change voice

Your navigation device gives spoken warnings and instructions using voices which have been recorded by actors.

To select a different voice on your device, tap **Change voice** in the Options menu or in the Voices and images menu. Then select a voice from the list.

You can add and remove voices using TomTom HOME.

Set clock



Set clock

Tap this button to select the time format and to set the time.

The easiest way to set the time is by tapping the **Sync** button. Your Start will then take the time from GPS information.

Note: You can only use **Sync** if you have GPS reception, so you cannot set the clock in this way when you are indoors.

After using **Sync** to set the time, you may have to adjust the hours depending on your time zone. Your Start works out your time zone and always keeps the time correct using GPS information.

Change language



Change language

Tap this button to change the language used for all the buttons and messages you see on your Start.

You can choose from a wide range of languages. When you change the language, you are also given the opportunity to change the voice.

Home and Favourites



Home and Favourites

Tap this button to manage your Home and Favourite locations.

For more information, see the chapter **Favourites**.

Voices and images



Voices and images

Tap this button to change your settings for voices and images.

For more information, see the chapter **Voices and images**.

Map corrections



Map corrections

Tap this button to make a correction to your map.

You can download map corrections made by other TomTom users or restrict your updates to corrections that have been verified by TomTom.

Advanced settings

To change the advanced settings on your TomTom Start, tap the **Advanced** button in the Options menu.

Set units



Set units

Tap this button to set the units used for the following measurements:

- Distance
- Time
- Latitude and longitude

Operate left-handed / Operate right handed



Operate left-handed

Tap this button to move important buttons, for example, the **Done** and **Cancel** buttons as well as the zoom bar, to the left hand side of the screen. This makes it easier to tap the buttons with your left hand without blocking the screen.

To move the buttons back to the right hand side of the screen, tap **Operate right-handed**.

Keyboard preferences



Keyboard preferences

You use the keyboard to enter your destination or to find an item in a list, such as a POI.

Tap this button to select the size of the keys on the keyboard and the keyboard layout. You can select from two sizes:

- **Large keyboard**
- **Small keyboard**

Several keyboard layouts are available:

- **ABCD keyboard**
- **QWERTY keyboard**
- **AZERTY keyboard**

Enable/ Disable Safety Alerts



**Enable/
Disable Safety
Alerts**

Tap this button to enable or disable TomTom Safety Alerts.

TomTom Safety Alerts



Important: Regularly connect your navigation device to TomTom HOME to update the list of locations for all types of safety alerts. The locations of mobile cameras are sent directly to your device.

When a safety camera location is shown on the map, a warning sound is played to warn you that you are approaching an area where a safety camera is located.

Switch map



Switch map

Tap this button to change the map you are using.

Reset factory settings



**Reset factory
settings**

Tap this button to restore the factory settings to your TomTom Start.

All your settings, including your Home location and any Favourites, are deleted.

8. Favourites

What are Favourites?

Favourites are places that you often visit. You can create Favourites so that you don't have to enter the address every time you plan a route.

They don't have to be places you especially like, just useful addresses.

How can I create a Favourite?

From the Main Menu, tap **Options** followed by **Home and Favourites** and then tap **Add Favourite**.

You can then select the location of the Favourite from the list below.

You can type your own name for the Favourite when the keyboard is shown. To enter the name, there's no need to delete the suggested name, just start typing.



You can set your Home location as a Favourite.



You cannot create a Favourite from another Favourite. This option will always be unavailable in this menu.

To rename a Favourite, tap **Home and Favourites** then **Manage Favourites** in the Options menu.



You can specify an address to be a Favourite.



Select a Favourite location from a list of places you have recently used as destinations.



You can add a Point of Interest (POI) as a Favourite.

Does it make sense to do this?

If you visit a POI you particularly like, for example a restaurant, you can add it as a Favourite.

To add a POI as a Favourite, tap this button, then do the following:

1. Narrow your choice of POIs by selecting the area where the POI is.

You can select one of these options:

- **POI near you** - to search from a list of POIs near your current position.
- **POI in city** - to choose a POI in a particular town or city. You have to specify a town or city.
- **POI near Home** - to search from a list of POIs near your Home location.

If you are currently navigating to a destination, you can also select from a list of POIs which are on your route or near your destination. Choose one of these options:

- **POI along route**
- **POI near destination**

2. Select the category of POI.

Tap the category of POI if it is shown or tap the arrow to choose from the complete list.

Tap **Any POI category** to search for a POI by name.



Tap this button to create a Favourite using the map browser.

Select the location of the Favourite using the cursor, then tap **Done**.

How can I use a Favourite?

You will normally use a Favourite to plan a route somewhere without having to enter the address. To plan a route to a Favourite location, do the following:

1. Tap the screen to bring up the Main Menu.
2. Tap **Plan route**.
3. For this example, tap **Yes** when asked about leaving from where you are.
4. Tap **Favourite**.
5. Select a Favourite from the list as your destination.
6. Tap **Now**.

If your current location is unknown, you are asked if you want to wait until the location is known or if you want to plan a route using your last known position. For this example, select **Plan using last known position** and tap **Done**.

The route is planned and a summary of the route is shown.

7. Tap **Done**.

Your navigation device is ready to guide you to your destination.

How can I change the name of a Favourite?

1. Tap the screen to bring up the Main Menu.
2. Tap **Options** to open the Options menu.
3. Tap **Home and Favourites**.
4. Tap **Manage Favourites**.
5. Tap the Favourite you want to rename.
6. Tap **Rename**.

How can I delete a Favourite?

1. Tap the screen to bring up the Main Menu.
2. Tap **Options** to open the Options menu.
3. Tap **Home and Favourites**.
4. Tap **Manage Favourites**.
5. Tap the Favourite you want to delete.
6. Tap **Delete**.

9. Points of Interest

Points of Interest or POIs are useful places on the map. Here are some examples:

- Restaurants
- Hotels
- Museums
- Parking garages
- Petrol stations

Note: Tap **Map corrections** in the Options menu to report missing POIs or edit existing POIs.

Navigating to a POI

You can use a POI as your destination. For example, if you are travelling to an unfamiliar city, you could choose a POI to help find a parking garage.

1. Tap the screen to bring up the Main Menu.
2. Tap **Plan route** in the Main Menu.
3. Tap **Yes** when asked if you want to leave from where you are.
4. Tap **Point of Interest**.
5. Narrow your choice of POIs by selecting the area where the POI is located.

You can select one of these options:

- **POI near you** - to choose from a list of POIs near to your current location.
- **POI in city** - to find a POI in a particular town or city.
- **POI near Home** - to choose from a list of POIs near to your Home location.

You can select from a list of POIs which are along your route or close to your destination. Choose from one of these options:

- **POI along route**
- **POI near destination**

Note: The last POI you viewed is also shown so that you can plan a route there faster.

6. Type the name of the town you want to visit and select the town when it appears in the list.

7. Select the category of POI or if you selected to **POI in city** then type the name of the city.

Tap the category of POI. Some categories are not available depending on the stage of planning.

Tap the arrow to choose from the complete list of categories. Select the category from the list or start to type the name of the category and select it when it appears in the list.

8. Tap **Parking garage**.

9. From the list of POIs shown, select the POI you want to navigate to.

The table below explains the distances listed next to each POI.

POI near you	Distance from your current location
POI in city	Distance from the city centre
POI near Home	Distance from your Home location
POI along route	Distance from a location on your route
POI near destination	Distance from your destination

If you know the name of the POI, tap **Find** and type the name. Select it from the list when it is shown.

The next screen shows more detailed information including the location of the POI on the map and the phone number of the POI, if available.

Tap **Select** to confirm you want to plan a route to this POI.

Once you have selected a POI, the route to the POI is calculated by your TomTom Start.

10. Voices and images

Voices

Your navigation device has different voices which have been recorded by actors. These voices are used in the following ways:

- Spoken instructions
- Warnings

Volume control

You can control the volume on your navigation device in two ways:

- To adjust the volume level, tap the left-hand section of the status bar in the Driving View.

The last spoken instruction is repeated and the volume level is shown.

Move the volume slider to adjust the volume.

- To turn the sound on or off, tap **volume** in the Main Menu.

Set day colour scheme



Set day colour scheme

Tap **day** in the Main Menu to start using these colours.

You can also download additional colour schemes using TomTom HOME.

Set night colour scheme



Set night colour scheme

Tap **night** in the Main Menu to start using these colours.

You can also download additional colour schemes using TomTom HOME.

Change car symbol



Change car symbol

Tap this button to select the car symbol that shows your current position in the Driving View.

You can download additional car symbols using TomTom HOME.

Change voice



Change voice

Your navigation device gives spoken warnings and instructions using voices which have been recorded by actors.

To select a different voice on your device, tap **Change voice** in the Options menu or in the Voices and images menu. Then select a voice from the list.

You can add and remove voices using TomTom HOME.

Change start-up image



Change start-up image

Tap this button to select the start-up image which is shown every time you switch on the device.

You can download additional start-up images using TomTom HOME.

Change shutdown image



Change shutdown image

Tap this button to select the shutdown image which is shown every time you switch off the device.

You can download additional shutdown images using TomTom HOME.

11. TomTom Map Share™

With TomTom Map Share, you can correct errors on your map and share those corrections with other people in the TomTom Map Share community, as well as receiving corrections made by others.

Note: TomTom Map Share is not available in all regions. For more information, go to tomtom.com/mapshare

Map corrections

There are two types of map correction:

- Corrections that are immediately shown on the map. These include, changing the traffic flow of a street, blocking or renaming a street and adding or editing POIs.

This type of change is immediately shown on your own map. You can hide these corrections at any time in the Map Share preferences menu.

- Corrections that are reported to TomTom but not shown immediately on your map. These include, missing streets, errors in motorway entrances and exits and missing roundabouts.

This type of correction is investigated by TomTom and once verified, is included in the next map release. These corrections are therefore not shared with the Map Share community.

Making a map correction

Important: For safety reasons, you should only mark a location when you are driving. Do not enter the full details of an error while you are driving.



Correct a map error

1. Tap **Options** in the Main Menu then tap **Map corrections**.
2. Tap **Correct a map error**.
A list of possible map corrections is shown.
3. Select the type of correction you want to report.

Note: If you tap **Add missing POI** or **Report other error** you will be asked for some additional information before the next step.

4. Select the method you want to use for selecting the location of the correction.
5. When you have found the location, tap **Done**.
6. Enter correction or confirmation of correction now.

Receiving the latest map updates

When you connect your TomTom Start to your computer, TomTom HOME automatically downloads any available map corrections and sends any changes you have made, to the Map Share community.

There are several types of corrections which can be set in the Correction preferences menu.

Marking a map error while on the move

Important: For safety reasons, you should only mark a location when you are driving. Do not enter the full details of an error while you are driving.

If you notice an item on your map that needs attention, you can mark the location using the **Report** button and then enter the details when you are no longer driving.

To show the **Report** button in the Driving View, do the following:

1. Tap **Options** in the Main Menu then tap **Map corrections**.
2. Tap **Correction preferences**.
3. Tap **Done** and then tap **Done** again.
4. Select **Show report button**, then tap **Done**.

The **Report** button is shown on the left-hand side of the Driving View. After you mark a location, you can add more information about the change when you open the **Map corrections** menu.

For example, you are driving to a friend's house and you notice that the name of the street you are on is different from the one on your map. To report the change, tap the **Report** button and your Start will save your current location. You can then send the correction to TomTom Map Share when you have finished your journey.

TomTom Map Share community

To join the Map Share community, do the following:

1. Tap **Options** in the Main Menu then tap **Map corrections**.
2. Tap **Download corrections made by others**.
3. Tap **Join**.

When you connect your Start to your computer, TomTom HOME downloads new corrections and sends your corrections to the Map Share community.

Important: Connect your device to your computer regularly and use TomTom HOME to check for new updates.

Correction preferences

The correction preferences set the way TomTom Map Share works on your device.

You can set the following preferences:

- Use the trust level slider to choose the types corrections from the Map Share community you want to use on your maps.

- Decide if you want to share your corrections with others.
- Show or hide the report button in the Driving View.

To set your preferences, tap **Options** in the Main Menu then tap **Map corrections**.

Accepting map corrections

You can set the type of map corrections you want to receive from the Map Share community to improve your maps.

To do this, tap **Options** in the Main Menu. Then tap **Correction preferences** and move the slider to select the type of corrections you want.



There are four types of map correction:

- **TomTom** - only accept changes made by TomTom.
- **Trusted sources** - accept changes made by TomTom and by trusted users who have been verified by TomTom.
- **Many users** - accept changes made by TomTom, by trusted users who have been verified by TomTom and changes made by a high number of Map Share community members.
- **Some users** - accept changes made by TomTom, by trusted users who have been verified by TomTom and all changes that have been made by Map Share community members.

Types of map correction

There are several types of correction that you can make to a map.

To make a correction to your map, tap **Map corrections** in the **Options** menu then tap **Correct a map error**. The following types of corrections are shown.



Tap this button to block or unblock a street. You can block or unblock the street in one or both directions.

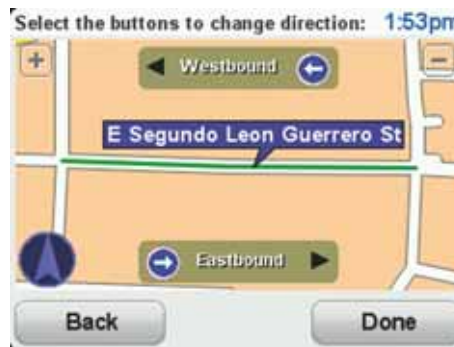
For example, to correct a street near to your current location, do the following:

1. Tap **(Un)block street**.
2. Tap **Near you** to select a street near your current location. You can select a street by name, a street near your Home location or a street on the map.
3. Select the street or section of a street you want to correct by tapping it on the map.

The street you select is highlighted and the cursor shows the name of the street.

4. Tap **Done**.

Your device shows the street and whether the traffic is blocked or allowed in each direction.



5. Tap one of the direction buttons to block or unblock the flow of traffic in that direction.
6. Tap **Done**.

The next time you connect your device to TomTom HOME, your corrections are shared with the TomTom Map Share community.



Reverse traffic direction

Tap this button to correct the traffic direction of a one-way street, where the direction of traffic is different to the direction shown on your map.

Note: Reverse traffic direction only works for one-way streets. If you select a two-way street you will be given the chance to block/unblock the street rather than changing the direction.



Edit street name

Tap this button to change the name of a street on your map.

For example, to rename a street near to your current location:

1. Tap **Edit street name**.
2. Tap **Near you**.
3. Select the street or section of a street you want to correct by tapping it on the map.

The street you select is highlighted and the cursor shows the name of the street.

4. Tap **Done**.
 5. Type the correct street name.
 6. Tap **Done**.
-



Change turn restrictions

Tap this button to change and report incorrect road turn directions.



Change road speed

Tap this button to change and report road speed limit.



Add missing POI

Tap this button to add a new Point of Interest (POI).

For example to add a new restaurant near to your current location:

1. Tap **Add missing POI**.
2. Tap **Restaurant** in the list of POI categories.
3. Tap **Near you**.
4. Select the location of the missing restaurant.

You can select the location by entering the address or by selecting the location on the map. Select **Near you** or **Near home** to open the map at your current location or at your Home location.

5. Tap **Done**.
6. Type the name of the restaurant then tap **OK**.
7. If you know the telephone number of the restaurant you can type it, then tap **OK**.

If you don't know the number, just tap **OK** without typing a number.



Edit POI

Tap this button to edit an existing POI.

You can use this button to make the following changes to a POI:

- Delete the POI.
- Rename the POI.
- Change the telephone number of the POI.
- Change the category that a POI belongs to.
- Move the POI on the map.



**Report other
error**

Tap this button to report other types of corrections.

These corrections are not immediately applied to your map. Your TomTom Start sends a special report to TomTom Map Share.

You can report missing streets, errors in motorway entrances and exits and missing roundabouts. If the correction you want to report is not covered by any of these report types, enter a general description then tap Other.

12. Help

Help provides an easy way to contact and plan a route to locations that provide emergency services, such as a hospital or to other specialist services.

For example, if you are involved in a car accident, you could use Help to call the nearest hospital and tell them your exact location.

Note: *Information may not be available for all services in all countries.*

How do I use Help to phone a local service?

You can use Help to plan a route to local services, make contact by phone and inform the service about the precise details of your current location.

When you search for a service centre, you are shown a list of the nearest services. Select one of the services in the list to view their address and phone number and to see your current location on the map.

To use Help to locate an emergency service, contact them by phone and plan a route to the emergency service location, do the following:

1. Tap the screen to bring up the Main Menu.
2. Tap **help**.
3. Tap **Phone for help**.
4. Select the type of service you require. For this example, tap **Nearest hospital**.
5. Select a service from the list. The nearest service is shown at the top of the list. For this example, tap the one at the top of the list.

Your current location is shown on the map together with the phone number of the service. This helps you to explain where you are when you call the service for help.

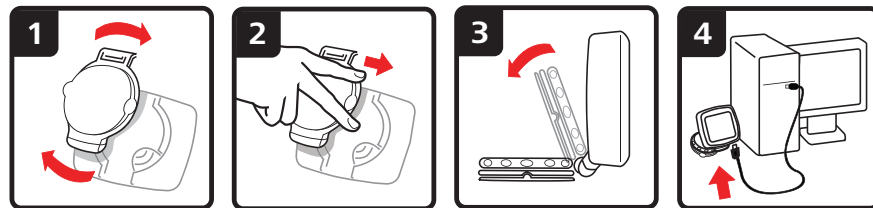
6. To plan a route from your current location to the service location, tap **Navigate there**.

Your navigation device starts guiding you to your destination.

Options

Phone for help	Tap this button to view the location and contact details for a service.
Drive to help	Tap this button to plan a route by car to a service.

13. Using TomTom HOME



TomTom HOME is a free application for your computer that you can use to update your device, read the Reference Guide, download extras and update your maps.

1. Remove the EasyPort™ Mount from back of your device by pushing the release button on the Mount. Turn the Mount around.
2. Reattach the Mount to your device. Push your device against the ball joint end of the Mount first. Then push the device into the other end of the Mount.
3. Open the Mount out so you can stand it on a table.
4. Insert the USB cable into your device and into your computer.

Switch your device on. Your device asks you if you want to connect to the computer. Tap **YES**. If TomTom HOME is not installed on your computer, it starts to install. Your computer needs to be connected to the internet.

Note: You can also download TomTom HOME from tomtom.com/home.

14. Addendum

Important Safety Notices and Warnings

Global Positioning System

The Global Positioning System (GPS) is a satellite-based system that provides location and timing information around the globe. GPS is operated and controlled under the sole responsibility of the Government of the United States of America which is responsible for its availability and accuracy. Any changes in GPS availability and accuracy, or in environmental conditions, may impact the operation of your TomTom device. TomTom does not accept any liability for the availability and accuracy of GPS.

Use with Care

Use of a TomTom device for navigation still means that you need to drive with due care and attention.

Aircraft and Hospitals

Use of devices with an antenna is prohibited on most aircraft, in many hospitals and in many other locations. A TomTom device must not be used in these environments.

Battery

This product uses a Lithium-Ion battery. Do not use it in a humid, wet and/or corrosive environment. Do not put, store or leave your product in or near a heat source, in a high temperature location, in strong direct sunlight, in a microwave oven or in a pressurized container, and do not expose it to temperatures over 60 C (140 F). Failure to follow these guidelines may cause the Lithium-Ion battery to leak acid, become hot, explode or ignite and cause injury and/or damage. Do not pierce, open or disassemble the battery. If the battery leaks and you come into contact with the leaked fluids, rinse thoroughly with water and seek medical attention immediately. For safety reasons, and to prolong the lifetime of the battery, charging will not occur at low (below 0 C/32 F) or high (over 45 C/113 F) temperatures.

Temperatures: Standard operation: -10 C (14 F) to + 55 C (131 F); short period storage: -20 C (-4 F) to + 60 C (140 F); long period storage: -20 C (-4 F) to + 25 C (77 F).

Caution: risk of explosion if battery is replaced by an incorrect type.

Do not remove or attempt to remove the non-user-replaceable battery. If you have a problem with the battery, please contact TomTom customer support.



THE LITHIUM-ION BATTERY CONTAINED IN THE PRODUCT MUST BE RECYCLED OR DISPOSED OF PROPERLY. USE YOUR TOMTOM ONLY WITH THE SUPPLIED DC POWER LEAD (CAR CHARGER/BAT-

TERY CABLE) AND AC ADAPTER (HOME CHARGER) FOR BATTERY CHARGING.

Please use this device with the charger provided.

For replacement chargers, go to **tomtom.com** for information about approved chargers for your device.

To recycle your TomTom unit please see your local approved TomTom service center.

The stated battery life is a maximum possible battery life. The maximum battery life will only be achieved under specific atmospheric conditions. The estimated maximum battery life is based on an average usage profile.

For tips on extending the battery life, go to the FAQ listed below for your country:

AU: **www.tomtom.com/8703**
CZ: **www.tomtom.com/7509**
DE: **www.tomtom.com/7508**
DK: **www.tomtom.com/9298**
ES: **www.tomtom.com/7507**
FI: **www.tomtom.com/9299**
FR: **www.tomtom.com/7506**
HU: **www.tomtom.com/10251**
IT: **www.tomtom.com/7505**
NL: **www.tomtom.com/7504**
PL: **www.tomtom.com/7503**
PT: **www.tomtom.com/8029**
RU: **www.tomtom.com/10250**
SE: **www.tomtom.com/8704**
UK: **www.tomtom.com/7502**
US: **www.tomtom.com/7510**

Taking care of your TomTom device

Do not leave your TomTom device or TomTom accessories on view when you leave your car. They may become an easy target for thieves.

We recommend that you use the safety preferences on your TomTom device, where available. The safety preferences are available in the Preferences menu.

Take care of your TomTom device and clean it correctly.

- Use a soft cloth to wipe the screen of your device; do not use any liquid cleaners.
- If your device gets wet, dry it with a soft cloth.
- Do not open the casing of your device under any circumstances. Doing so may be dangerous and will invalidate your warranty.
- If your device includes a memory card, do not use the memory card with any device other than a TomTom device. Other devices may damage the memory card.
- Do not expose your device to high or low temperatures, which can cause permanent damage. For example, don't leave it in the car on hot summer days or during cold winter nights.

R&TTE directive

Hereby, TomTom declares that this personal navigation device is in compliance with the essential requirements and other relevant provisions of the EU

Directive 1999/5/EC. The declaration of conformity can be found here:
www.tomtom.com/legal.

Exposure limits

This device complies with radiation exposure limits set forth for an uncontrolled environment. In order to avoid the possibility of exceeding the radio frequency exposure limits, human proximity to the antenna shall not be less than 20cm (8 inches) during normal operation.

WEEE directive



This symbol on the product or its packaging indicates that this product shall not be treated as household waste. In line with EU Directive 2002/96/EC for waste electrical and electronic equipment (WEEE), this electrical product must not be disposed of as unsorted municipal waste. Please dispose of this product by returning it to the point of sale or to your local municipal collection point for recycling.

CE Marking

This equipment complies with the requirements for CE marking when used in a residential, commercial, vehicular or light industrial environment.



C-tick



N14644

This product displays the C-tick to show it complies with relevant Australian and New Zealand regulations.

Warning for Australia

The user needs to switch off the device when exposed to areas with potentially explosive atmospheres such as petrol stations, chemical storage depots and blasting operations.

Responsible party in Australia

TomTom Australia, Building 1, Suite 3, Level 3, 3 Richardson Place, North Ryde NSW 2113, Australia

Tel: + 612 8875 1700

This Document

Great care was taken in preparing this manual. Constant product development may mean that some information is not entirely up to date. The information in this document is subject to change without notice.

TomTom shall not be liable for technical or editorial errors or omissions contained herein; nor for incidental or consequential damages resulting from the performance or use of this material. This document contains information protected by copyright. No part of this document may be photocopied or reproduced in any form without prior written consent from TomTom N.V.

15. Copyright notices

© 2009 TomTom N.V., The Netherlands. TomTom®, and the "two hands" logo, among others, are Trademarks owned by TomTom N.V. or one of its subsidiaries. Please see www.tomtom.com/legal for warranties and end user licence agreements applying to this product.

© 2009 TomTom N.V., Niederlande. TomTom®, das 'Zwei Hände'-Logo usw. sind registrierte Marken von TomTom N.V. oder eines zugehörigen Tochterunternehmens. Die für dieses Produkt geltenden Garantien und Endnutzerlizenzvereinbarungen finden Sie unter www.tomtom.com/legal.

© 2009 TomTom N.V., Pays-Bas. TomTom® et le logo composé de « deux mains », entre autres, font partie des marques commerciales appartenant à TomTom N.V. ou l'une de ses filiales. L'utilisation de ce produit est régie par notre garantie limitée et le contrat de licence utilisateur final, que vous pouvez consulter à l'adresse suivante : www.tomtom.com/legal

© 2009 TomTom N.V., Nederland. TomTom® en het logo met twee handen zijn onder andere handelsmerken die eigendom zijn van TomTom N.V. of een van haar dochterondernemingen. Ga naar www.tomtom.com/legal voor garanties en licentieovereenkomsten voor eindgebruikers die van toepassing zijn op dit product.

© 2009 TomTom N.V., The Netherlands TomTom® e il logo delle "due mani", fra gli altri, sono marchi registrati di proprietà di TomTom N.V. o di una delle sue filiali. Consultare www.tomtom.com/legal per le garanzie e i contratti di licenza per l'utente finale applicabili a questo prodotto.

© 2009 TomTom NV, Países Bajos. TomTom™ y el logotipo "dos manos" son marcas comerciales, aplicaciones o marcas registradas de TomTom NV. Nuestra garantía limitada y nuestro acuerdo de licencia de usuario final para el software integrado son de aplicación para este producto; puede consultar ambos en www.tomtom.com/legal.

© 2009 TomTom International BV, Països Baixos. TomTom™ i el logotip amb les "dues mans" formen part de les marques comercials, aplicacions o marques comercials registrades propietat de TomTom International B.V. La nostra garantia limitada i l'acord de llicència per a usuaris finals per al programari inclòs són aplicables a aquest producte. Podeu consultar ambdós documents a www.tomtom.com/legal

© 2009 TomTom N.V., Holanda. TomTom® e o logótipo das "duas mãos", entre outras, são marcas comerciais detidas pela TomTom N.V. ou por uma das suas subsidiárias. Vá a www.tomtom.com/legal para consultar as garantias e o contratos de licença do utilizador final aplicáveis a este produto.

© 2009 TomTom NV, Holland. TomTom™ og logoet med "de to hænder" er blandt de varemærker, produkter og registrerede varemærker, der tilhører TomTom International B.V. Vores begrænsede garanti og slutbrugerlicensaf-tale for indlejret software gælder for dette produkt; begge dokumenter findes på www.tomtom.com/legal.

© 2009 TomTom N.V., Alankomaat. Muun muassa TomTom® ja kaksi kättä - logo ovat TomTom N.V:n tai sen tytäryhtiöiden omistamia tavaramerkkejä. Katso osoitteesta www.tomtom.com/legal tätä tuotetta koskevat takuut ja käyttöehtosopimukset.

© 2009 TomTom N.V., Nederland. TomTom®, og de "to hender"-logoen, blant andre, er varemerker eid av TomTom N.V. eller en av deres underleverandør-er. Vennligst se www.tomtom.com/legal for gjeldende garantier og lisen-savtaler for sluttbrukere for dette produktet.

© 2009 TomTom NV, Nederländerna. TomTom™ och logotypen "två händer" tillhör de varumärken, programvaror eller registrerade varumärken som ägs av TomTom International B.V. Vår begränsade garanti och vårt slutanvändar-licensavtal för inbyggd programvara kan gälla för denna produkt. Du kan läsa dem båda på www.tomtom.com/legal.

© 2009 TomTom International BV, Nizozemsko. TomTom™ a logo se dvíma dlaními patřící mezi obchodní značky, aplikace nebo registrované ochranné známky ve vlastnictví společnosti TomTom International B.V. Na tento produkt se vztahuje omezená záruka a smlouva s koncovým uživatelem pro vestavěný software; do obou dokumentů můžete nahlédnout na www.tomtom.com/legal

© 2009 TomTom International BV, Hollandia. A TomTom™ és a "két kéz" embléma is a TomTom International B.V. által birtokolt védjegyek, alkalmazá-sok és bejegyzett védjegyek közé tartozik. A korlátozott garancia és a benne foglalt szoftver végfelhasználói licencszerződése érvényes erre a termékre; melyeket a következő helyen tekinthet át: www.tomtom.com/legal

© 2009 TomTom N.V., Holanda. TomTom™ i logo z dwiema dłońmi, oraz inne, są zarejestrowanymi znakami towarowymi firmy TomTom N.V. lub jed-nej z jej spółek zależnych. Informacje o gwarancjach i umowach licencyjnych dla końcowego użytkownika tego produktu znajdują się na stronie www.tomtom.com/legal.

© 2009 TomTom International BV, Holandsko. TomTom™ a logo s "dvoma rukami" patria medzi ochranné známky, aplikácie alebo registrované ochran-né známky vlastnené spoločnosťou TomTom International B.V. Na tento produkt sa vzťahuje obmedzená záruka a dohoda s koncovým užívateľom pre

vstavany softvér; viac informácií o oboch nájdete na www.tomtom.com/legal

© 2009 TomTom International BV, Holland. TomTom™ ja "kahe käe" logo kuuluvad nende kaubamärkide, rakenduste või registreeritud kaubamärkide hulka, mille omanikuks on TomTom International B.V. Sellele tootele kehtib meie piiratud garantii ja lõppkasutaja litsentsileping manustarkvara jaoks; saad tutvuda mõlemaga aadressil www.tomtom.com/legal

© 2009 TomTom International BV, Nyderlandai. TomTom™ ir dviejų rankų logotipas yra TomTom International B.V. vienas iš prekių ženklų, programų arba registruotųjų prekės ženklų. Mūsų ribota garantija ir galutinio naudotojo sutartis naudotis įdėtąja programine įranga taikoma šiam produktui; galite peržiūrėti abu dokumentus svetainėje www.tomtom.com/legal

© 2009 TomTom International BV, Nyderlandai. TomTom™ ir dviejų rankų logotipas yra TomTom International B.V. vienas iš prekių ženklų, programų arba registruotųjų prekės ženklų. Mūsų ribota garantija ir galutinio naudotojo sutartis naudotis įdėtąja programine įranga taikoma šiam produktui; galite peržiūrėti abu dokumentus svetainėje www.tomtom.com/legal

© 2009 TomTom International BV, Hollanda. TomTom™ ve "two hands" logoları TomTom International B.V.'ye ait ticari marka, uygulama veya kayıtlı ticari markalardır. Sınırlı garantimiz ve katıştırılmış yazılımın son kullanıcı lisans sözleşmesi bu ürün içindir; www.tomtom.com/legal adresinden ikisine de göz atabilirsiniz

© 2009 TomTom N.V., Holanda. TomTom® e o logotipo "duas mãos" entre outros, são marcas comerciais de propriedade da TomTom N.V. ou de uma de suas subsidiárias. Consulte www.tomtom.com/legal para obter garantias e contratos de licença de usuário final que se aplicam a este produto.

Data Source

© 2009 Tele Atlas N.V. Based upon:

Topografische ondergrond Copyright © dienst voor het kadaster en de openbare registers, Apeldoorn 2006.

© Ordnance Survey of Northern Ireland.

© IGN France.

© Swisstopo.

© BEV, GZ 1368/2003.

© Geonext/DeAgostini.

© Norwegian Mapping Authority, Public Roads Administration / © Map Solutions.

© DAV, violation of these copyrights shall cause legal proceedings.

This product includes mapping data licensed from Ordnance Survey with the permission of the Controller of Her Majesty's Stationery Office. © Crown cop-

Copyright and/or database right 2009. All rights reserved. Licence number 100026920.

© Roskartographia

Data Source

© 2009 Tele Atlas North America, Inc. All rights reserved.

Some images are taken from NASA's Earth Observatory.

The purpose of NASA's Earth Observatory is to provide a freely-accessible publication on the Internet where the public can obtain new satellite imagery and scientific information about our home planet.

The focus is on Earth's climate and environmental change: earthobservatory.nasa.gov/
