

# HD Hidden Dash Camera

This product uses high-performance chips to provide high-resolution video and seamless dynamic pictures. It has passed the strict certification of European CE and American FCC, and supports 4K resolution. Please read this manual carefully before use and keep it properly.

## 1.Appearance and button function description (please refer to the actual product)



- 1.MIC    2.Lens    3.Power    4.USB Port
- 5.TF Slot    6.Speaker    7.Indicator light

## 1. Button description

### Function one: switch on and off

Long press [Power Button] for 3 seconds to turn on or off the machine.

### Function 2: Format TF card

When the dash cam prompts you to format the card, short press the [Power Button] to format the card.

### Function 3: Video lock

While recording, short press the [Power Button] to lock the video.

### Function 4: Restore factory settings

Short press the [Power Button] 5 times within two seconds, and the machine will restart to restore factory settings.

## 2.Indicator light description:

Blue light flashes every second: recording

Blue light flashes every 3 seconds: Time-lapse video recording

Blue light off: the machine is not recording

Blue light flashes quickly: Upgrading

Blue light is always on: Connect to WIFI and enter the APP and preview

## 3.Mobile APP download



1.Turning on the car and the recorder into working mode, find the WIFI name starting with "FHCam-\*\*\*\*\*" in the phone settings and enter the password 12345678 to connect.

2.After the connection is completed, enter the APP. The recorder's time will be synchronized with the current phone's time. The video files and photo files on the TF card will also be synchronized to the APP, and the files can be browsed and deleted. Whether you need to format the TF card on the APP, you need to determine whether there are files in the TF card that need to be saved. (Be sure to format the product when using it for the first time, and format it regularly once or twice a month)

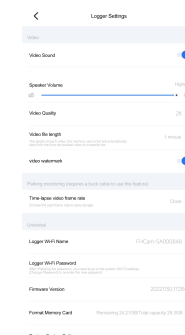
**Warm tips: When formatting the TF card, please back up important videos or photos first to avoid losing important files.**

## 4. Introduction to basic functions of mobile APP

1.Mobile APP main interface :



2.Description of the main functions of the setting interface



**Video sound:** on/off (on: recording mode; off: silent mode)

**Speaker volume:** off/low/medium/high/maximum

**Video Resolution:** 4K/2K /1080P

**Video time:** 1 minute/2 minutes/3 minutes

**Video watermark:** On/Off (On: Videos and photos have time watermarks; Off: Videos and photos have no watermarks)

**Time-lapse video frame rate:** Off / 1 second / 2 seconds / 3 seconds (the video file length is set to 1 minute, the time-lapse video frame rate is set to 1 second, which is equivalent to recording 1 minute of video, and the actual recording time is 30 minutes).

### Reset Wi-Fi name:

The recorder Wi-Fi name can be modified (after the machine is restored to factory settings, it will be reset back to the default WIFI name)

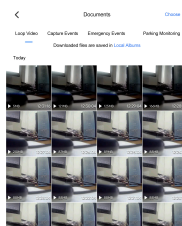
### Reset Wi-Fi password:

The wifi password can be set manually (after the machine is restored to factory settings, the wifi password defaults to: 12345678)

**Device formatting:** Format the card (recommended to format once or twice a month)

**Factory reset:** Reset settings function

Mobile APP playback preview interface diagram:



## 5. The installation guide recommends the installation diagram:

1. Turn off the car engine.
2. Insert the TF card into the card slot of the recorder. [Note] Please use high-speed TF card (Class10 or above)
3. Fix the recorder on the original rearview mirror of the car. [Note] When wiring, the charging extension cable can be laid along the edge of the car windshield.
4. Adjust the lens position to ensure that the lens is level with the ground.
5. Start the engine and check whether the machine is installed correctly.



## 6. Product specifications and parameters

Features	HD Hidden WIFI Dash Camera
Resolution	4K
Storage format	H,265
Video format	TS
Picture format	JPG
Loop recording	Seamlessly loop recording without missing a second
Time lapse monitoring	Support
Time stamp	Support
Storage	TF (not included)
Store temperature	-30 C ~80 C
Working temperature	-20 C ~70 C