



## USER MANUAL WIFI SMART BULBS

### IMPORTANT SAFETY DETAILS

1. Ensure the AC/Mains power is NOT connected and cannot be unexpectedly reconnected during installation.
2. This product must be installed by a qualified electrician in accordance with instructions provided and in compliance with recognised electrical and safety regulations relevant to the country it is being installed.
3. This product may NOT be installed by minors or people with a mental disability.

### USER INSTRUCTIONS

Please read these instructions and retain them for future reference.

#### IMPORTANT INFORMATION

It is recommended that the fittings are installed by a qualified electrician ensuring the installation complies with current IEE wiring regulations & local building control. These products are designed for connection to a 220-240V mains supply. Always switch off mains supply before installation.

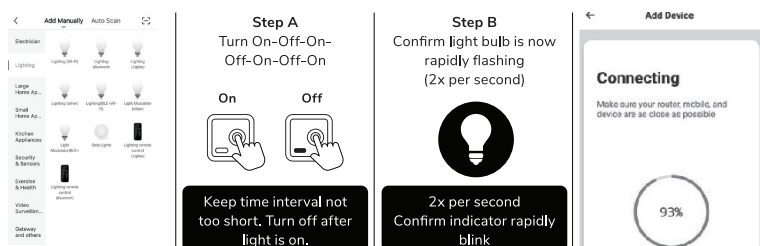
DOWNLOAD  
APP HERE



Smart Life



1. **Download "Smart Life" App**
2. **Register a Smart life account and sign in the App** - You will be prompted to enter your mobile number or email address to register. The system automatically recognises your country / area. You can also select your country code. Note: If you use a Mobile number you will be sent a text message with your confirmation code to complete your account registration.
3. **Add lamp to Smart life App** - Tap the icon "+" on the top right corner of "Home" page, choose 'Lighting' and your device type - Light Source (BLE+Wi-Fi), then follow the instructions to connect the lamp. The lamp needs to be set to flash rapidly. Please follow Step A and B below:



4. **Enter Wi-Fi password, then connect.** Make sure your router, mobile and lamp are as close as possible.
5. After connection, the lamp will appear in your list and you can control it from anywhere in the world. You can also rename the lamp and group more lamps.

COMPATIBLE WITH **AMAZON ALEXA,**  
**GOOGLE ASSISTANT AND SIRI**

www.luedd.com

