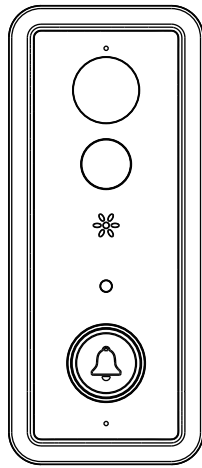


# Low Consumption Smart Wireless Doorbell Quick Guide

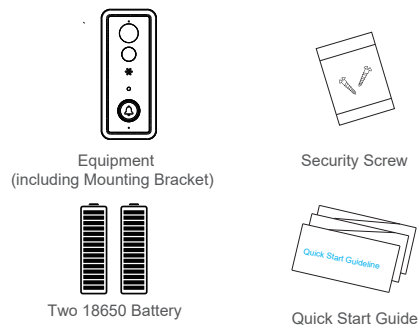


\* Before using this product, please read the Quick Guide carefully and keep it for future reference

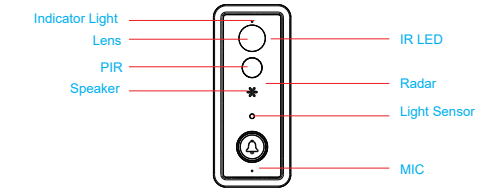
V1.0

## Package List

Please check and make sure the camera (here in after referred to as "The Equipment") is in good condition and all below parts are included after opened the package.



## Appearance Introduction

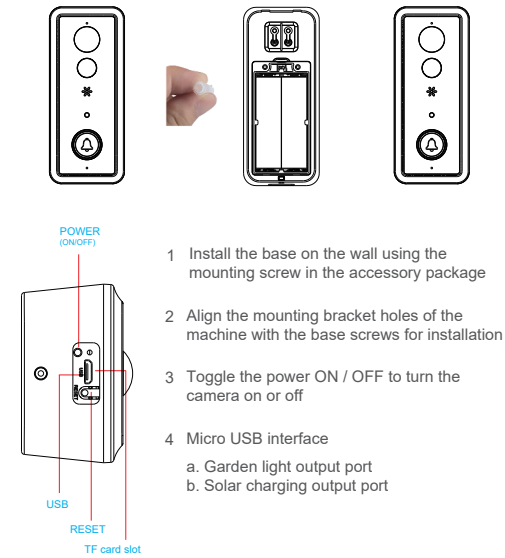


- IR LED** The infrared light will turn on automatically when the ambient light is insufficient
- Light Sensor** It's used to collect ambient light values when the luminance is lower than 2Lux, infrared light will be enabled automatically.
- PIR** When human body moved in front of the equipment, the equipment will make notification to your mobile phone.
- Radar (optional)** When the human body moves in front of the device, the radar generates a trigger signal to the mobile phone

- Lens** Video image capture
- Indicator Light** Blue light flashes ---- Pairing Status  
Red light on ---- Failed WIFI Connection  
Blue light on ---- Connected Successfully  
Red & Blue light on together ---- Connecting WI-FI
- MIC** To gather the environmental sounds and realize voice-voice intercom.
- Speaker** System sound and voice intercom
- Mounting bracket holes** Use bracket mounting screws to mount the bracket to the wall

## Installation Guide

Please take out the bracket from the equipment as shown in the figure



- Install the base on the wall using the mounting screw in the accessory package
- Align the mounting bracket holes of the machine with the base screws for installation
- Toggle the power ON / OFF to turn the camera on or off
- Micro USB interface
  - Garden light output port
  - Solar charging output port

- Press the reset button for 5 seconds, waiting for the indicator light turn to red slow flash (The equipment should be in working condition, long press, sleep state is invalid)
- TF card slot, install TF card for video storage

## Buzzer Matching Space (this device needs to be purchased separately)

Matching: Press and hold the buzzer volume key for 4 seconds, The LED Light will turn ON. Next, press the doorbell button for 5 seconds. When the buzzer LED blinks quickly, the matching is complete.

Reset: Press and hold the buzzer volume key for 10 seconds. The matching will reset.

## Device Connection

Thanks for choosing our product. Please scan the following QR code to install the app on your phone, then set your device by following steps after it's done.

**App Installation**  
Scan the QR codes below or Search "TuyaSmart" from App Store (for iOS devices)/Google Play Store (for Android smart phones) to download and install the App.



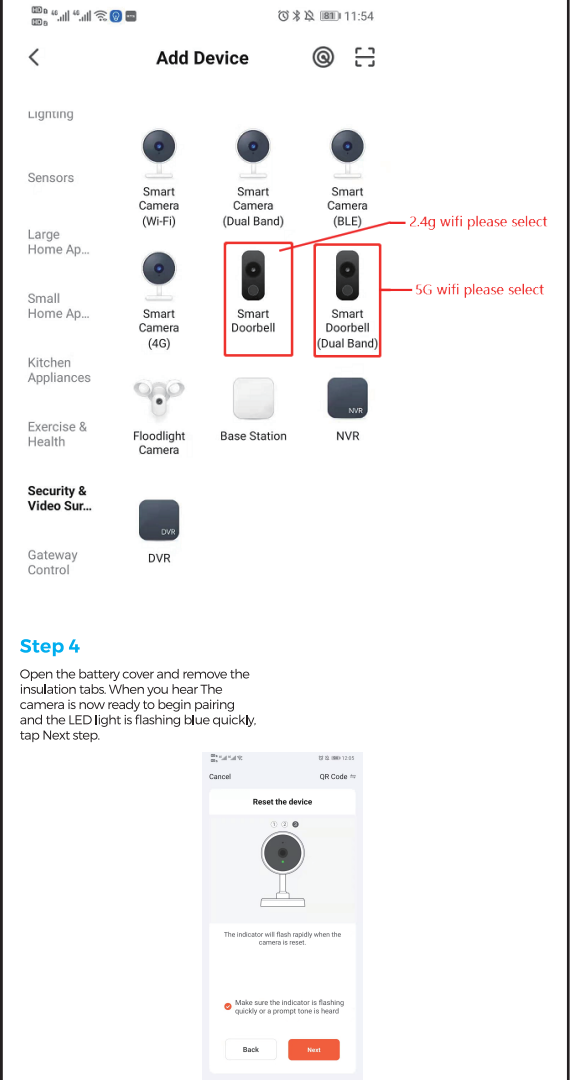
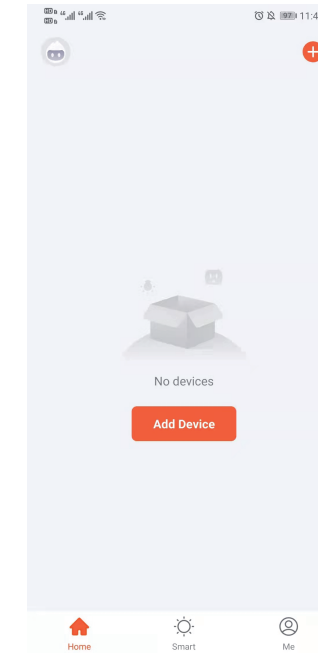
## Set up your video doorbell in the TuyaSmart App

**Step 1**  
Download TuyaSmart app. Scan QR code below, or search for "Tuya Smart" on Apple app store or Google Play.



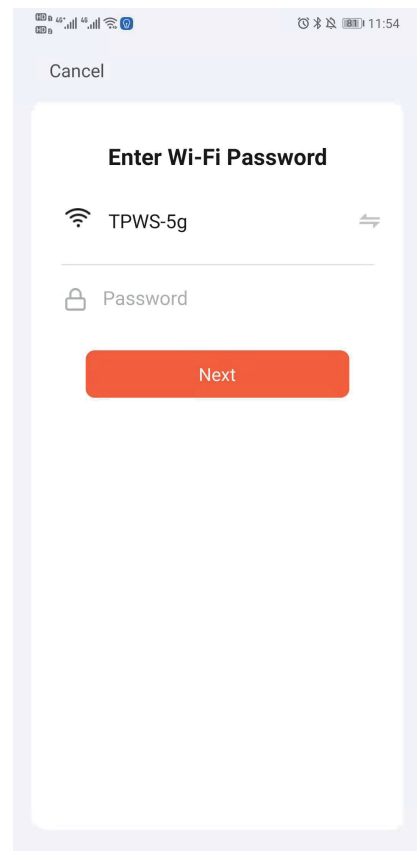
**Step 2**  
Open the TuyaSmart app. Register your email or phone number and Log in to your account.

**Step 3**  
To add your doorbell, select the + at top right of home page. Then select Smart Doorbell



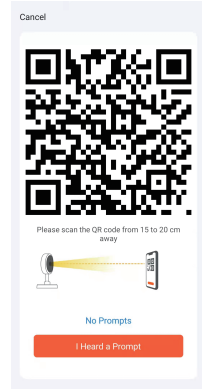
## Step 5

Find the name of your Wi-Fi network. Enter your Wi-Fi password, then tap Confirm.



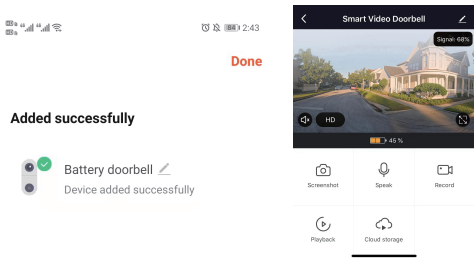
## Step 6

Tap Continue, then use the doorbell to scan the QR code on your mobile phone. After you hear a prompt, tap I Heard a Prompt.



## Step 7

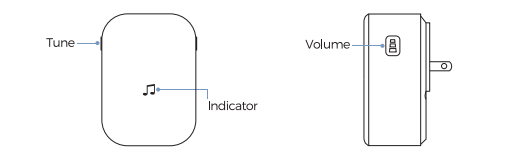
Once the doorbell has connected to your Wi-Fi, tap Done. Setup is complete. Give it a try and go see the Live view.



## NOTICE:

- Be sure to turn on push notifications on your phone.
- Navigate to Settings -> Notifications -> ON
  - A list of apps that support push notifications will appear.
  - Tap the TuyaSmart app and enable the notification.

## Overview of the wireless chime

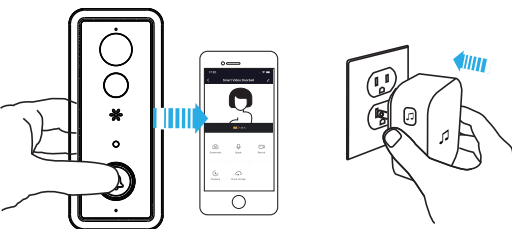


## Getting Started

Set up your chime with the video doorbell

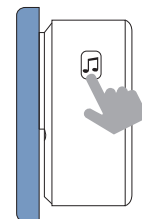
### Step 1

Before the setup process, be sure your video doorbell has connected to your phone and plug in your chime.



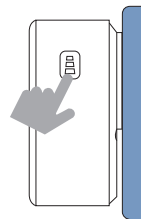
### Step 2

Press the Tune Button to cycle through 52 different tunes and select a tune.



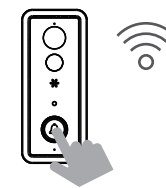
### Step 3

Press and hold the Volume Button for 5 seconds until the blue indicator is ON.



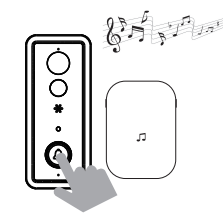
## Step 4

Press the Call Button.



## Step 5

Press the Call Button again, the chime will automatically play the tune you selected.



TuyaSmart User Guide  
This manual is for reference only.  
The App will be modified as the version is updated.

## Technical Specification

Resolution	1920*1080 (Matching)
Field of View	1.7mm@F2.4/166°
IR LED	6 850nm high power infrared lamps, 5-10 meters for night vision
WiFi	802.11 b/g/n supported
Audio	Two-way speaking, with echo removal function
Recording	MicroSD card (Above C10 high speed brand card is needed)
Storage	Supports up to 128 Gb MicroSD Card (No more than 32GB card is recommended)
Battery	18650 battery(LI-Ion, 2600mAh)
Push	Quick Push within 1 second
Prompting	Press/PIR/remote cell phone activation
Power	Standby current: 120 uA Working current: 170 mA

## FAQ

- Q** : How do I reset the doorbell?  
**A** : Press and hold the RESET Button for 6 seconds.
- Q** : How do I share the video doorbell with my family?  
**A** : 1. From the home page, tap the doorbell to live view.  
2. Tap the 'settings' icon in the top right corner.  
3. Select 'Share Device'  
4. 'Add sharing' and enter the account name you want share to. Or you can follow the in-app instructions to do family settings.
- Q** : How do I adjust PIR motion detection sensitivity?  
**A** : 1. From the home page, tap the doorbell to live view.  
2. Tap the settings icon in the top right corner.  
3. Select PIR.
- Options for PIR Motion Sensitivity  
High: Records and notifies you about every motion. Shortest battery life.  
Medium: Records and notifies you about motion less often. Standard battery life.  
Low: Records and notifies you about motion even less often. Maximum battery life.
- Q** : How many users can view the video at the same time?  
**A** : Up to 4 users may view the video feed. Both iOS and Android are compatible.
- Q** : Is 5GHz WiFi supported?  
**A** : 5GHz WiFi is supported.
- Q** : My signal is poor on my doorbell.  
**A** : Your doorbell may be too far away from your wireless router or you may have some obstructions in between that reduce signal strength. You might try repositioning your router or getting a signal extender/repeater for your wireless router.
- Q** : Is this device only battery powered?  
**A** : Yes, it's only battery powered. No wires needed.
- Q** : Can I use Tuya Smart Life app for the doorbell?  
**A** : Yes, you can use both Tuya Smart Life and Denver Smart Home.

## Introduction to Functions

- LONG BATTERY LIFE:** The capacity of the 18650 battery is 2600mAh, which equates to 6 months of battery life
- HIGH DEFINITION:** Million High Definition Pixels within the Ultra-Thin 1.7MM Lens
- ANYWHERE, ANYTIME:** Remote Cell phone activation (via the app) is supported
- 2.4G/5GHz Wi-Fi connection supported
- Clear two-way speaking
- PIR supported. When someone is wandering outdoors, warning information is immediately sent to the connected cell phone via the app
- Automatic switching between Day/Night mode, with clear pictures to safeguard you and your family members.

\* Tip: There will be no further notification of any change of the above functions. Please take the actual object as the standard. Thanks!

**NOTE**  
Please choose the correct 18650 battery to use with the smart doorbell!

