

# Portable Steam Sauna

willowbe

## USER MANUAL



**WARNING:** Read all instructions carefully before using this sauna.  
This product should always be used with care.



I am thrilled to see customers purchasing our portable sauna product! Providing a convenient and enjoyable way for people to relax and take care of their health is truly rewarding. It is a pleasure to know that our product is making a positive impact on people's lives, and we are committed to continuing to deliver high-quality and innovative solutions to our customers.

Thank you to all our supporters for choosing our portable sauna, and we look forward to serving you for many years to come.



## GET STARTED

### WHAT'S IN THE BOX

- WILLOWYBE Full-Size Portable Steam Sweatbox (33.4' x 33.4' x 57' / 85cm x 85cm x 145cm)
- steam generator
- Chair
- accessories
- User Manual

### FIRST STEPS

1. Remove the product from the shipping container and remove all items from the packaging, including accessories.
2. Check for any damage to the equipment and accessories during transportation.
3. Before use, carefully read the safety instructions in this user manual.
4. Follow the setup instructions to complete the setup process and begin using the device.
5. Then, refer to the "Folding Instructions" on page 9-10, "Steamer Operation Instructions" on page 8, and "Bluetooth Connection Setup" on page 11.

### CUSTOMER SUPPORT

If you have any questions about setting up, we're here to help. Email us and an experienced customer support representative will be happy to assist you : [Service@willowybe.com](mailto:Service@willowybe.com)

## SPECIFICATIONS

Overall Dimensions ( L x W x H )	33.4"x33.4"x57" / 85x85x145cm
Rated Voltage of Steamer	100V -240V/50Hz (According to local voltage standards)
Power of Steamer	1000W
Time-setting	60 Minutes Max

## SAFETY INSTRUCTIONS

- Please keep the product in balance when using it . To prevent fire hazard ,avoid placing the steamer near flammable materials.
- Pregnant women and people having high blood pressure and heart disease should not use this product .Please wait at least 30 minutes after eating before using this product . Do not use this product in time of great hunger for your safety.
- Don't put animals or plants into the sauna room .
- When using the product , stay at least 10cm away from the steam pores . Don't touch the steam pores with bare hand.
- Don not use the product in humid environment or immerse it into water .
- The water filled in the steamer should not reach over the max water line in case of malfunction.
- User should drink 200-300 ml water or tea before using the product . Please prepare a towel for wiping sweat . Take a break after a certain period of using. Don't use the product consecutively over 20 minutes in one time.
- Old people should be accompanied by their families when using the product.
- The steamer will power off automatically when the water inside dries up .It will restart 20 minutes later . If it doesn't restart , please contact supplier.Never turn on the steamer without water added.



- Don't forget to disconnect the power after use and wipe it clean with a damp cloth after 15 minutes of cooling down . Don't clean the product with water directly.
- The sauna room and steamer must be placed at a flat surface . If the steamer doesn't work , don't open the lid immediately . Disconnect the power and let it thoroughly cool down first .
- Always keep the product clean and in good condition as it would make its service life longer.
- Keep the product out of reach of children.
- Flammable , toxic , corrosive or other harmful liquid must not be put into the steamer as it might cause bodily injuries or property damage .
- The steamer should be only used with the sauna room . It should not be used for other heating purposes . Don't repair or modify the product by yourself as it will invalidate the warranty.
- Milk should not be put into the steamer . If you want to use herb or flowers,remember to use a gauze bag to wrap them in advance .

## WARNING

1. After each use, please unplug the power cord.
2. Store the device in a cool and dry location.
3. Do not exceed the maximum water level.
4. Do not use in or near water due to the danger of electric shock.
5. Keep the cord away from heat sources.
6. If the cord or plug is damaged, do not operate the device.
7. Do not pull the cord.
8. Any maintenance must be performed by the manufacturer, its service agent or a similarly qualified person.

## CLEANING

- After use, let the sauna cool down completely before cleaning.
- Wipe down the interior and exterior of the sauna with a damp cloth or sponge.
- If there are any stubborn stains, use a mild detergent or cleaning solution to remove them.
- Rinse the sauna thoroughly with clean water and allow it to dry completely before storing.

## STORAGE

- Make sure the sauna is completely dry before storing it.
- Fold or disassemble the sauna according to the manufacturer's instructions.
- Store the sauna in a dry and well-ventilated area to prevent mold and mildew growth.
- Keep the sauna away from direct sunlight and heat sources.
- Store the sauna in a protective carrying case or cover to prevent damage or dust accumulation.

## PACKAGE CONTENTS



»» Sauna Tent Cover x 1



»» Steamer x 1



»» Steam Tube x 2



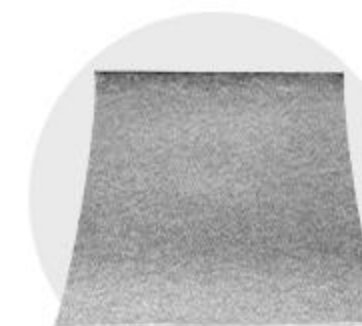
»» Carrying Bag x 1



»» Steam Box x 1



»» Chair x 1



»» Mat x 1



»» Remote x 1



## SET-UP INSTRUCTIONS

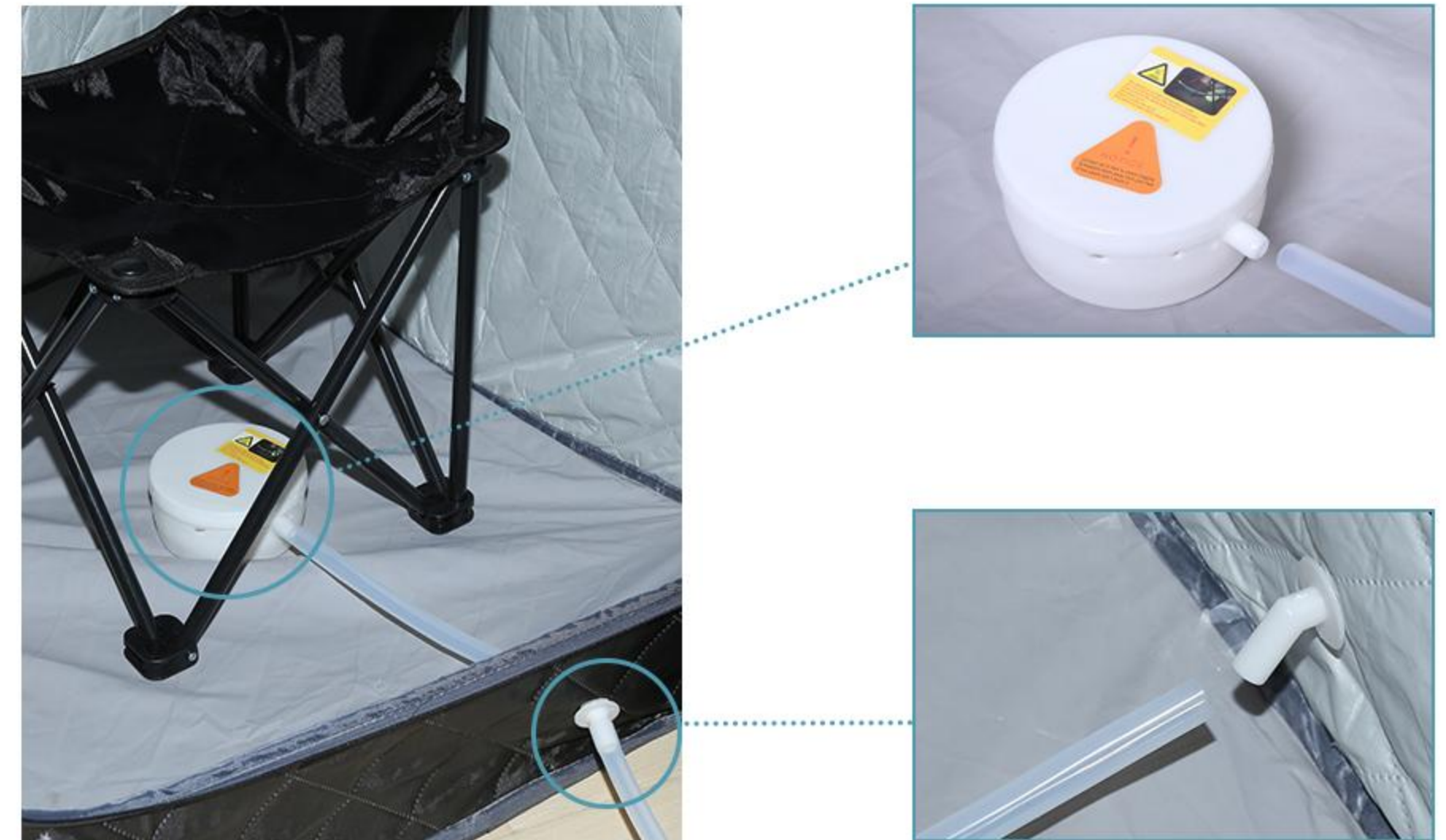


1. Take out the sauna tent cover from the carrying bag and unfold it from the center as shown in Fig 1.
2. Hold the inner frame and pull it out diagonally as shown in Fig 2.
3. The sauna tent cover will look like Fig 3 after it is fully unfolded.



**Fig 4**

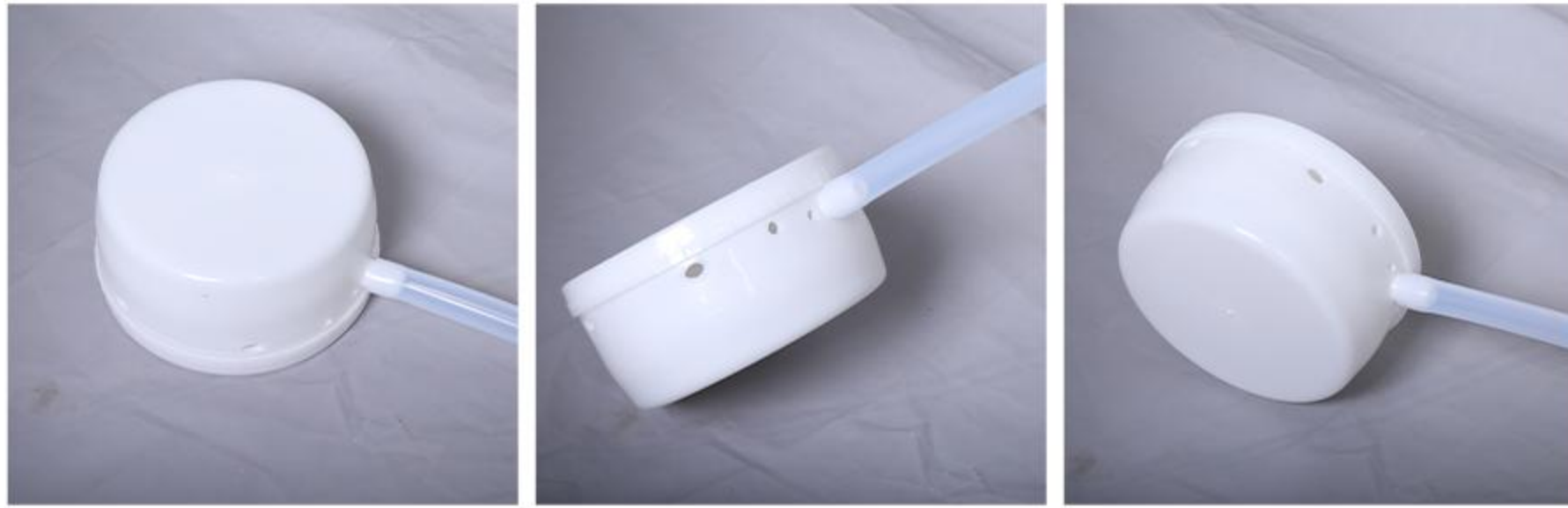
**Note :** If the frame of the sauna tent cover is out of shape , please twist it forward and backward repeatedly to readjust it as shown in Fig 4.



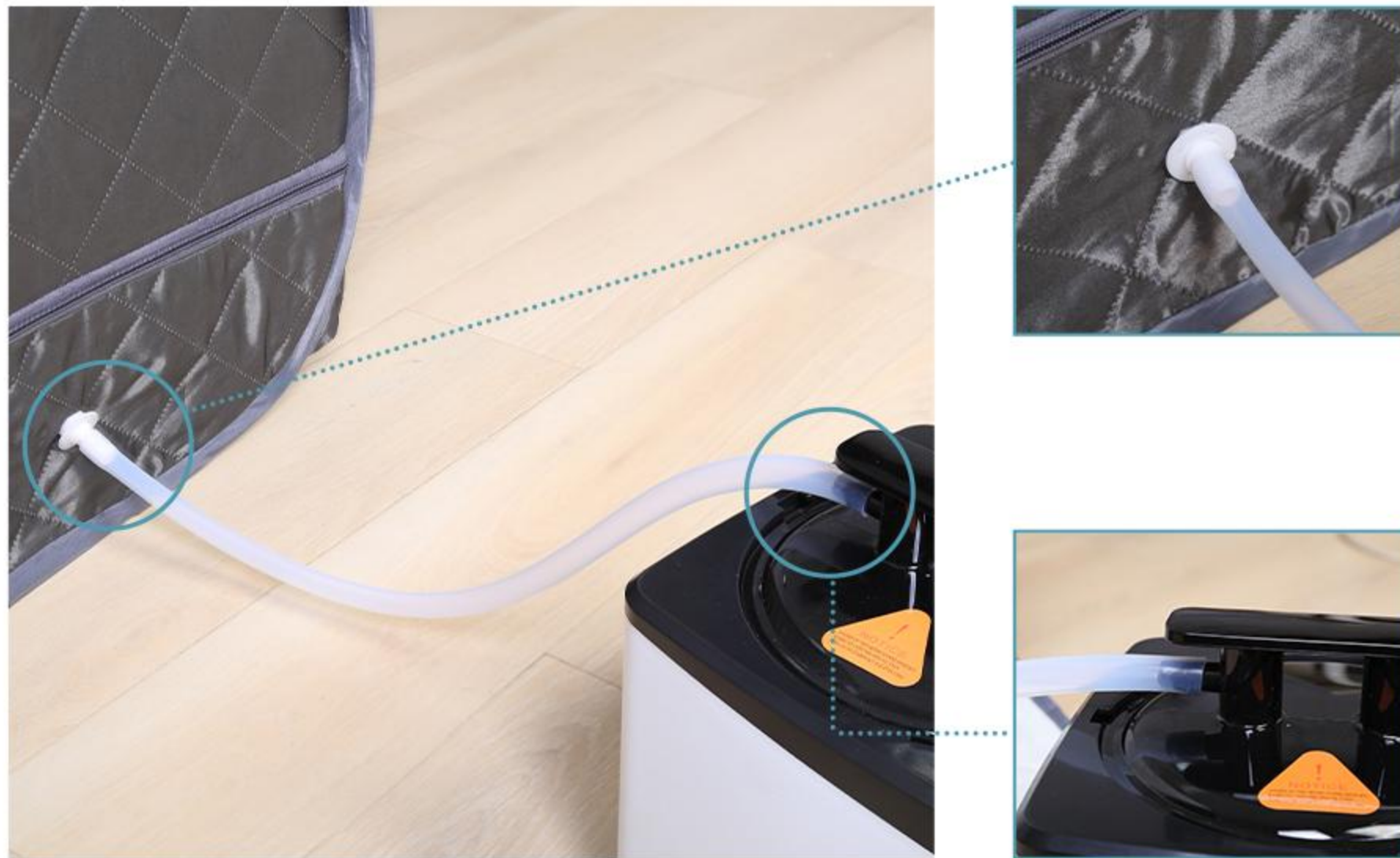
**Fig 5**

Use one of the steam tubes to connect the steam box and the outlet hole on the inner side of the sauna tent cover as shown in Fig 5 . Ensure that the steam tube is well connected with the two parts.





**Note :** Make sure that the steam box is placed flat with its cover on the top and that there is no objects within its periphery of 10 cm .



**Fig 6**

Use one of the steam tubes to connect the steamer and the inlet hole on the outer side of the sauna tent cover as shown in Fig 6. Ensure that the steam tube is well connected with the two parts. If the tubes fall off or loosen during usage , please turn off the power and let them thoroughly cool down first before reconnection.

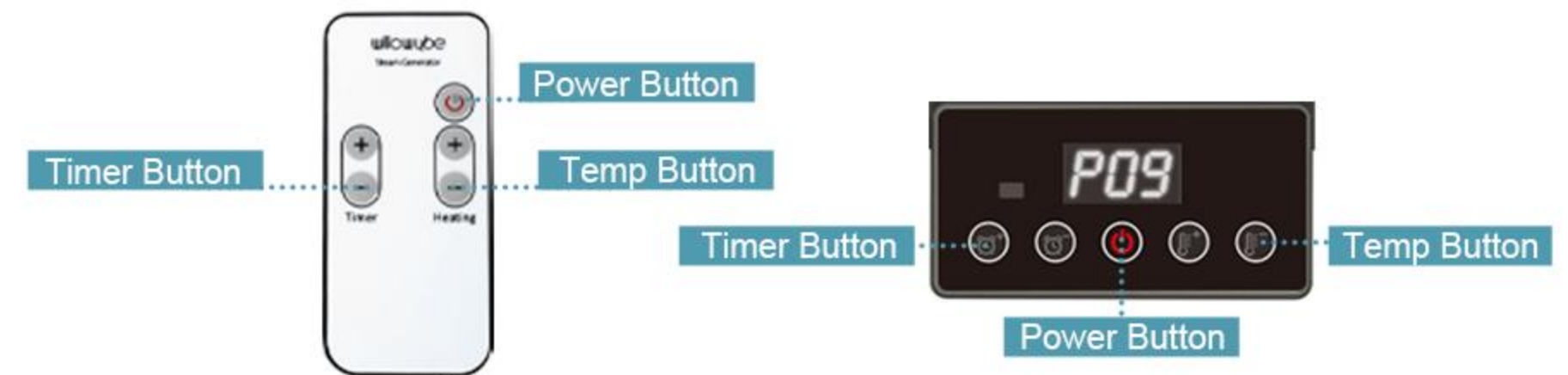
### **Caution:**

When you are using the product , please make sure all of the steam tubes are not bent as shown in the right picture since it would block the flow of steam . As results , it may make the steam tubes pop off and hot steam stray out causing scalding and other bodily injuries. Make sure the steam tubes are placed straight. If you find they are bent , turn off the power and let them thoroughly cool down first before you adjust their positions.



## Steamer Operation Instructions

- Zip up the cover and add water to the steamer until the water reaches to the 1.5 L water line. This amount of water could last about 1 hour. If you like , you can add some herb or flowers in the steamer or the steam box . Remember to use a gauze bag to wrap them in advance.
- Make sure the lid is locked on the steamer and connect to the power.
- Press the buttons on the steamer or use the remote to turn it on and adjust the time to 60 minutes and temperature to P9 . Let it preheat for about 7-10 minutes first.



- Before you get into the cover , adjust the temperature back to P8 first since P8 is suitable for most people . You can turn it up if you think it is not hot enough .
- After use , remember to disconnect the power and let the product thoroughly cool down first before you disassemble it.



# SAUNA TENT COVER TAKE-DOWN INSTRUCTIONS

Use your mobile device to scan a QR code and watch a video.



1

Lay down the sauna tent cover with the inlet hole facing you. Press down the frame on the opposite side.



2

Fold the sauna tent cover into half.



5

Fold the bottom left corner over the top right corner.



3

Hold the top left corner and fold it toward the right side of the inlet hole.



4

Hold the top left corner and fold it toward the right side of the inlet hole.



6

Press down the folded sauna tent cover.



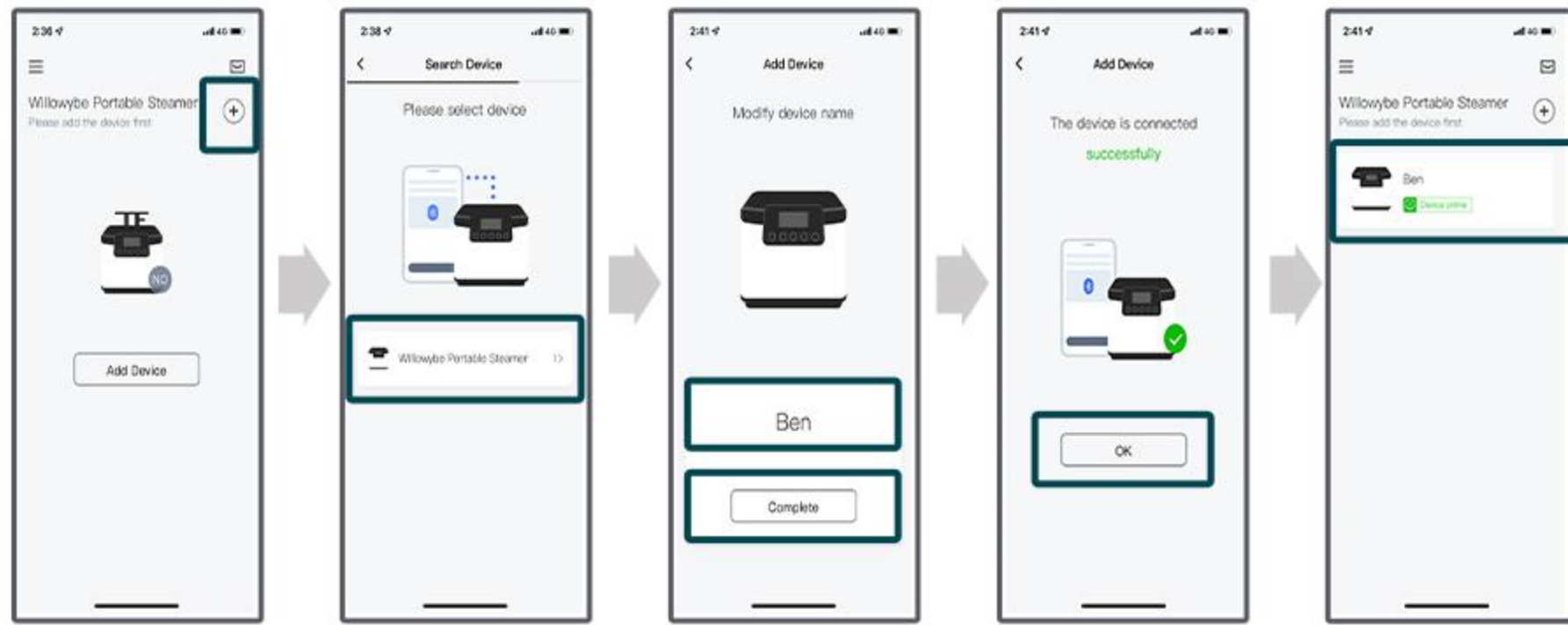
7

Press down the folded sauna tent cover.





## How to connect with steamer?



## How to Connect with steamer by WillowyBe App:

1. Enter WillowyBe app, and click on the icon in the upper right corner to add your product.
2. Search for steamer using Bluetooth and click current device.
3. Define the name and click the Finish button.
4. Click the target steamer and start using.



Get it on  
**Apple Store**



Get it on  
**Google Play**

Scan the code to download or search **WillowyBe** in the market to download the APP

## LIMITED WARRANTY DESCRIPTION

- The warranty typically covers defects in materials and workmanship for one year from the date of purchase.
- The warranty does not cover damage caused by misuse, neglect, or accidents. If you experience any issues with your steam sauna product, contact the manufacturer or seller to initiate the warranty claim process.
- The manufacturer or seller may require proof of purchase and/or photos or videos of the issue to assess the warranty claim.
- The manufacturer or seller will determine if the issue is covered by the warranty and may repair or replace the product at their discretion.
- Any repaired or replaced product will be covered by the remaining warranty period or 90 days, whichever is longer.
- Remember to read and understand the specific terms and conditions of the warranty provided by the manufacturer or seller to ensure proper warranty coverage and to follow any recommended maintenance or usage guidelines to avoid voiding the warranty.

## DISCLAIMERS

- The steam sauna product is designed for personal use only and is not intended to diagnose, treat, cure, or prevent any medical conditions.
- The steam sauna product should not be used by individuals with certain medical conditions, such as heart disease, high blood pressure, or pregnancy, without consulting a healthcare provider.
- The steam sauna product should be used in accordance with the manufacturer's instructions and any applicable safety guidelines.
- The manufacturer or seller is not liable for any injuries, damages, or losses resulting from the use or misuse of the steam sauna product.
- The purchaser assumes all risks and liabilities associated with the use of the steam sauna product.
- The steam sauna product is provided "as is" without any warranty, either express or implied, including but not limited to the implied warranties of merchantability and fitness for a particular purpose.

## LEGAL DISCLAIMER

These statements have not been evaluated by the U.S. Food and Drug Administration. This product is not intended to diagnose, treat, cure or prevent diseases. If a condition persists, contact a doctor. We recommend that you do not rely solely on the information presented and that you always read Labels, warnings, and directions before using or consuming a product. This is not a medical device

willowybe

**SAUNA ANYWHERE &  
ANYTIME**

[Service@willowybe.com](mailto:Service@willowybe.com)

 [WILLOWYBE](#)