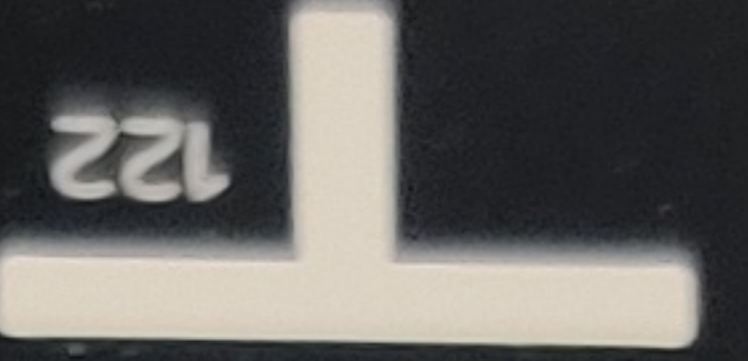
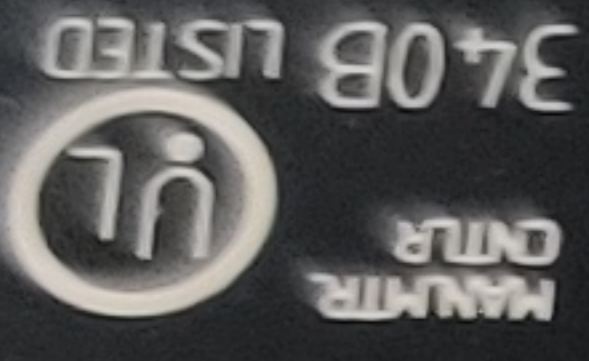


**WARNING**  
 THE OPENING OF THE BRANCH-CIRCUIT PROTECTIVE DEVICE MAY BE AN INDICATION THAT A FAULT CURRENT HAS BEEN INTERRUPTED. TO REDUCE THE RISK OF FIRE OR ELECTRIC SHOCK, CURRENT-CARRYING PARTS AND OTHER COMPONENTS OF THE CONTROLLER SHOULD BE EXAMINED AND REPLACED IF DAMAGED. IF BURNOUT OF THE CURRENT ELEMENT OF AN OVERLOAD RELAY OCCURS, THE COMPLETE DEVICE MUST BE REPLACED.

FOR FIELD WIRING SEE INSTALLATION INSTRUCTIONS



WHEN PROTECTED BY ANY OF THE FOLLOWING LISTED CURRENT LIMITING C.B. PER UL 489 LISTED FUSE RATED AS SHOWN IN TABLE AND HAVING AN INTERRUPTING RATING NOT LESS THAN INDICATED



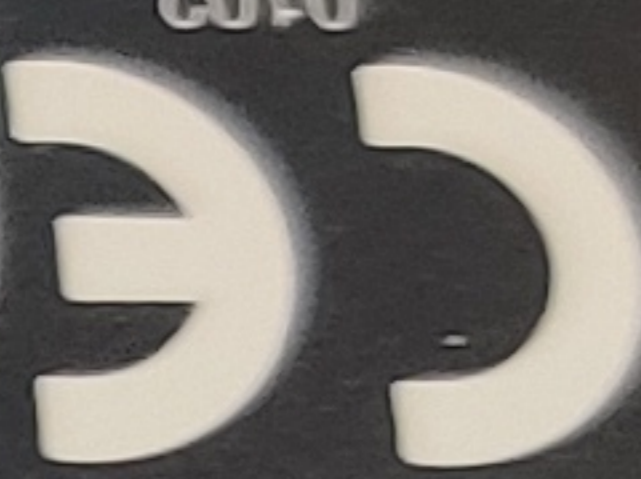
|                  |                  |      |      |
|------------------|------------------|------|------|
| MAX RMS SYM AMPS | 50 KA - 600 V AC | 600A | 600A |
| MAX. FUSE        |                  |      |      |
| MAX. C. B.       |                  |      |      |

|                                   |      |              |     |     |     |     |     |    |
|-----------------------------------|------|--------------|-----|-----|-----|-----|-----|----|
| SEE DIAL FOR MOTOR FULL-LOAD AMPS | HP   | MAX.         | 115 | 200 | 240 | 480 | 600 | V  |
|                                   |      | LOAD AMPS    |     |     |     |     |     |    |
| BREAK ALL LINES                   | 3 PH |              | -   | -   | -   | -   | -   | HP |
|                                   |      | TRIP RATING  |     |     |     |     |     |    |
| 125 % OF DIAL SETTING             | 1 PH |              | -   | -   | -   | -   | -   | HP |
|                                   |      | DIAL SETTING |     |     |     |     |     |    |

Moeller series  
 Eaton Industries GmbH  
 53105 Bonn, Germany

Made in Germany

|                                      |                            |     |     |     |     |
|--------------------------------------|----------------------------|-----|-----|-----|-----|
| I <sub>b</sub> (A)                   | U <sub>b</sub> (V-50/60Hz) | 1   | 440 | 500 | 690 |
| I <sub>g</sub> /I <sub>cu</sub> (kA) |                            | 150 | 150 | 150 | 150 |
| I <sub>cs</sub> (kA)                 |                            | 150 | 150 | 150 | 150 |



U<sub>imp</sub> = 6000 V  
 IEC/EN 60947-4-1  
 IEC/EN 60947-2  
 Category A  
 GB/T 14048.2  
 50 Hz



II(2)G  
 II(2)D  
 PTB 10 ATEX 3013



165628