

Register your Click & Style on

www.philips.com/myclickandstyle

S738, S728, S720



PHILIPS



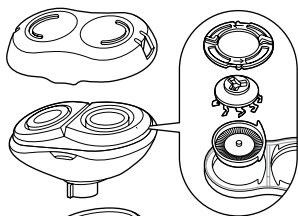
- UK** Shave with a circular motion.
- DK** Foretag barbering med en cirkelbevægelse.
- DE** Rasieren Sie sich mit kreisenden Bewegungen.
- EL** Ξυριστείτε με κυκλικές κινήσεις.
- ES** Afeitese realizando movimientos circulares.
- FI** Aja ihokarvat pyörivin liikkein.
- FR** Rasez-vous en effectuant des mouvements circulaires.
- IT** Effettuate la rasatura con movimenti circolari.
- NL** Scheer met een draaiende beweging.
- NO** Barber med en sirkulær bevegelse.
- PT** Barbear com um movimento circular.
- SE** Rakning med cirkelrörelser.
- TR** Dairesel hareketlerle tıraş olun.
- AR** قم بالحلاقة بحركة دائرية.
- FA** با حرکت دایره ای اصلاح کنید.

- UK** Apply gentle pressure: not too hard and not too soft.
- DK** Tryk let: ikke for hårdt og ikke for blødt.
- DE** Üben Sie leichten Druck aus: nicht zu fest und nicht zu sanft.
- EL** Ασκήστε ελαφριά πίεση: ούτε πολύ δυνατά ούτε πολύ απαλά.
- ES** Ejerza presión levemente: ni demasiado fuerte ni demasiado suave.
- FI** Paina hellävaroen: ei liian kovaa eikä liian pehmeästi.
- FR** Exercez une légère pression : ni trop forte, ni trop faible.
- IT** Applicate una pressione delicata, né troppo forte, né troppo lieve.
- NL** Oefen milde druk uit: niet te hard en niet te zacht.
- NO** Ha et lett trykk: ikke for hardt og ikke for mykt.
- PT** Aplicar um pouco de pressão: sem exercer demasiada pressão nem pressão insuficiente.
- SE** Tryck försiktigt: inte för hårt och inte för lätt.
- TR** Çok sert ve çok hafif olmamak kaydıyla hafif baskı uygulayın.

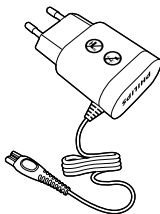
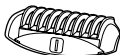
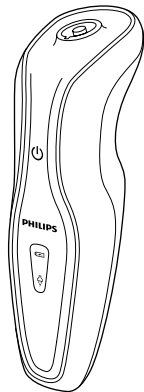
- AR** استخدم الضغط الخفيف: ليس بقوة مبالغة ولا نعومة مبالغة.
- FA** آرام فشار وارد کنید: نه بیش زیاد و نه بیش از حد کم.

- UK** Shave often or trim long hairs before shaving.
- DK** Barber dig ofte, eller trim lange hår inden barberingen.
- DE** Rasieren Sie sich regelmäßig, oder trimmen Sie lange Haare vor der Rasur.
- EL** Αν δεν ξυρίζεστε συχνά, να τριμάρετε τις μακριές τρίχες πριν ξυριστείτε.
- ES** Afeitese con frecuencia o recorte los pelos largos antes de afeitarse.
- FI** Aja ihokarvat usein tai trimmaa pitkät ihokarvat ennen ajamista.
- FR** Rasez-vous fréquemment ou tondez les poils longs avant de vous raser.
- IT** Radetevi spesso oppure rifinite i peli più lunghi prima di effettuare la rasatura.
- NL** Scheer regelmatig of trim lange haren voordat u gaat scheren.
- NO** Barber deg ofte, eller trim lange hår før barbering.
- PT** Barbeie-se regularmente ou apare os pelos compridos antes de se barbear.
- SE** Raka dig ofta eller trimma långa hårstrån innan du rakar dig.
- TR** Sık tıraş olun veya uzun kılları tıraş öncesi düzeltin.
- AR** قم بالحلاقة بصورة كثيرة أو قم بتهديب الشعيرات الطويلة قبل الحلاقة.

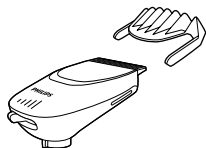
- FA** اغلب اوقات اصلاح کنید یا قبل از اصلاح موهای بلند را کوتاه کنید.



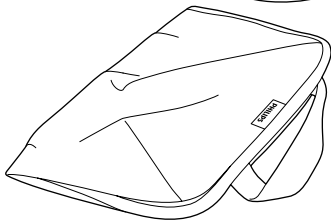
S738
S728



S738
S720



S738



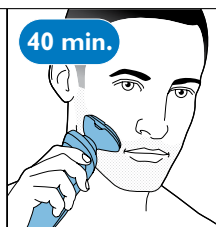
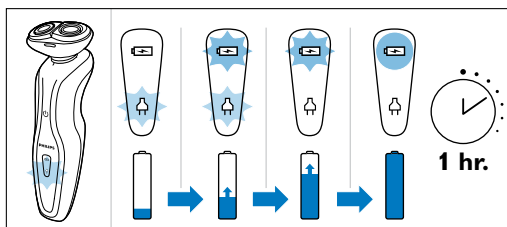
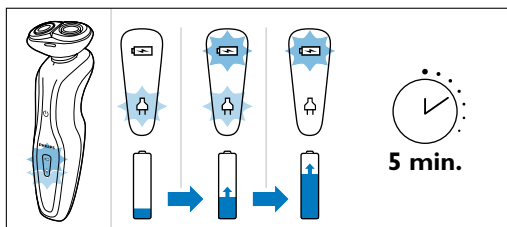
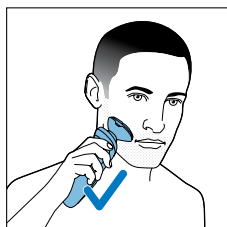
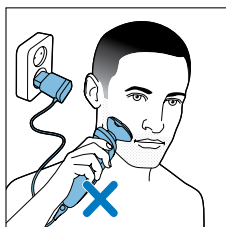
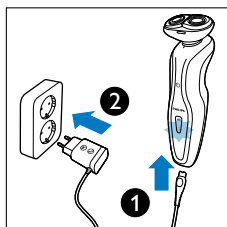
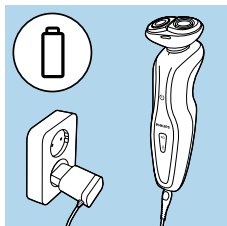
1



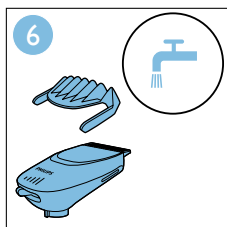
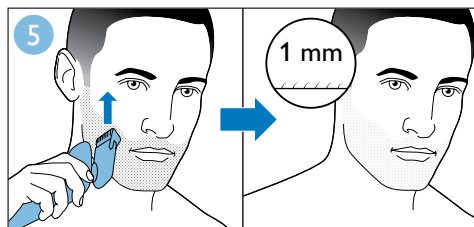
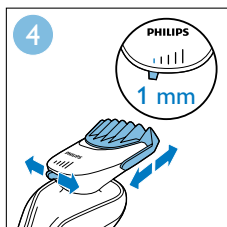
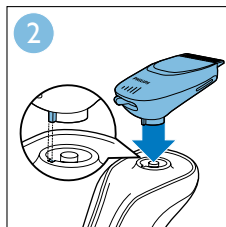
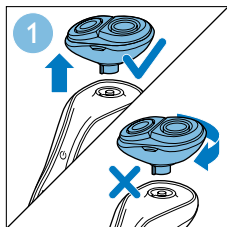
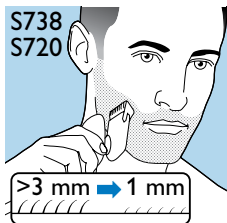
2

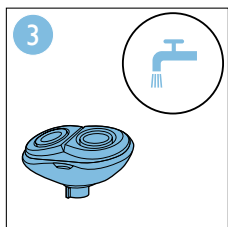
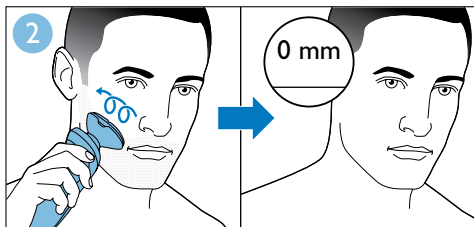
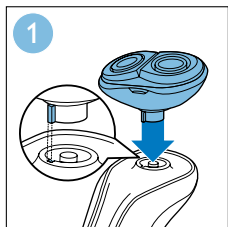
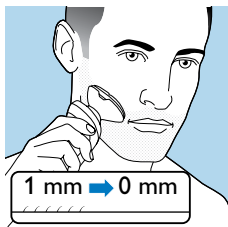


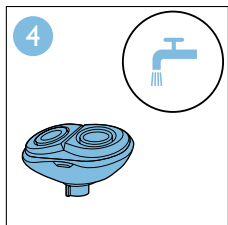
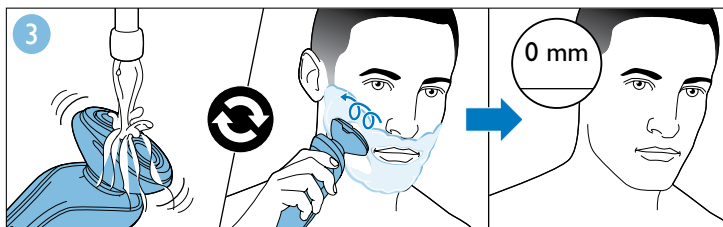
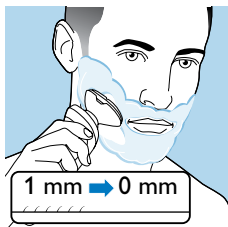
www.philips.com/support



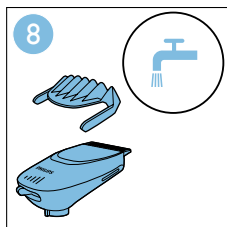
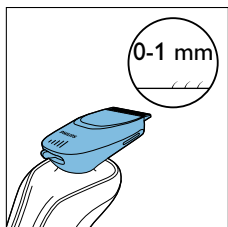
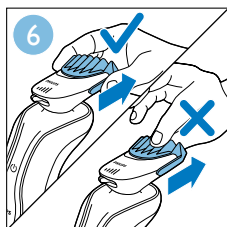
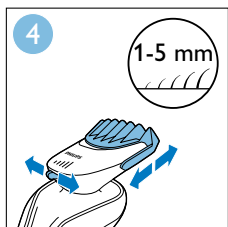
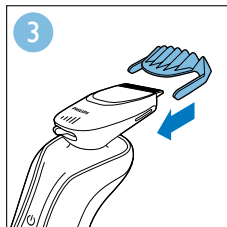
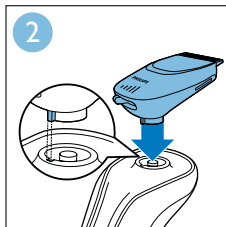
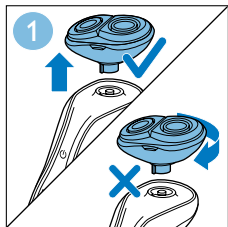
S738
S720



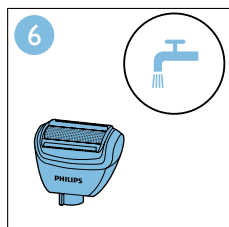
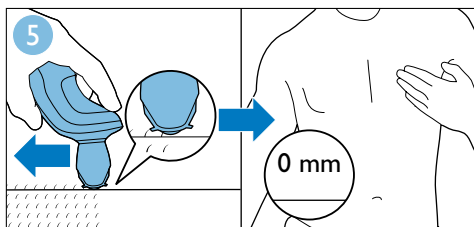
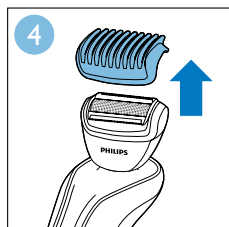
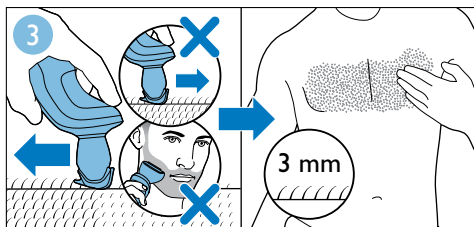
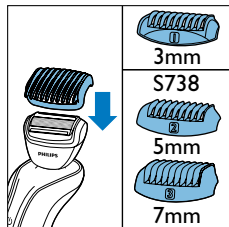
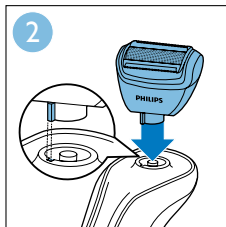
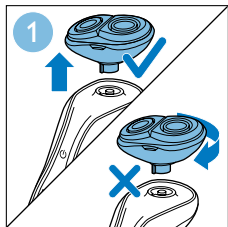


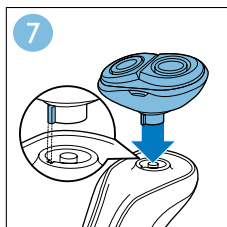
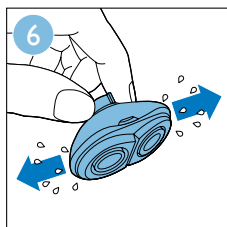
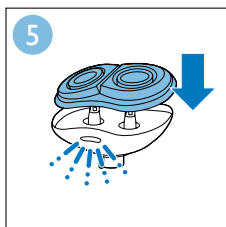
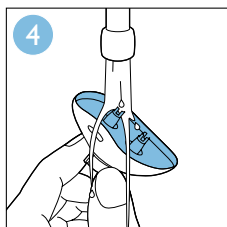
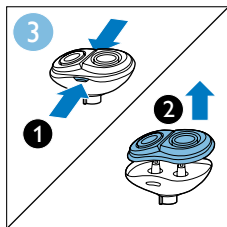
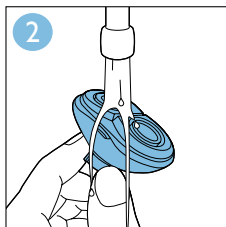
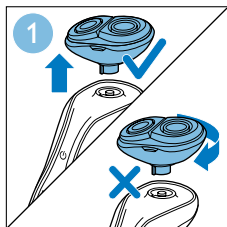
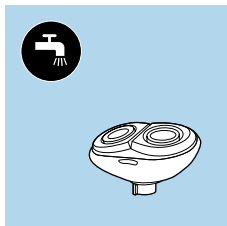


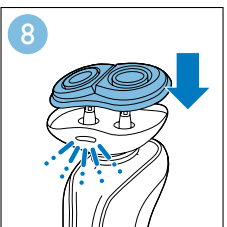
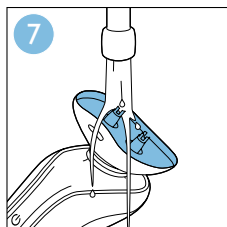
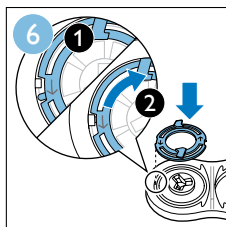
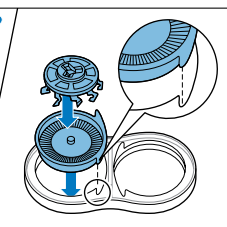
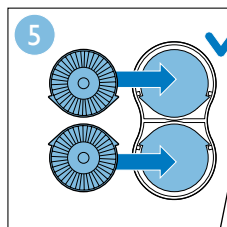
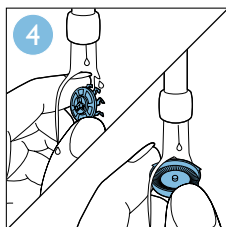
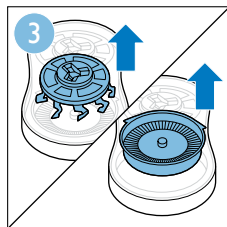
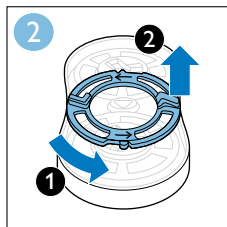
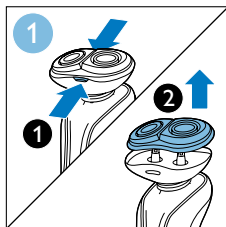
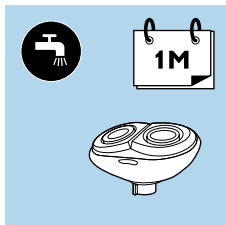
S738
S720

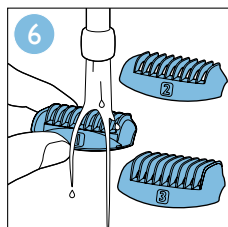
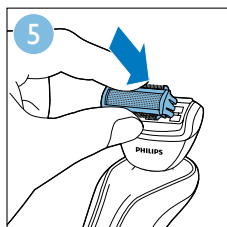
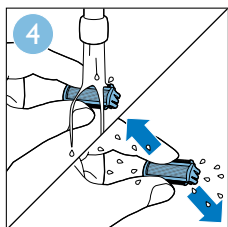
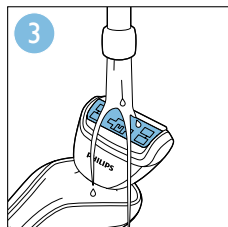
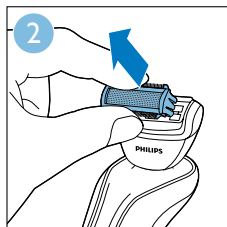
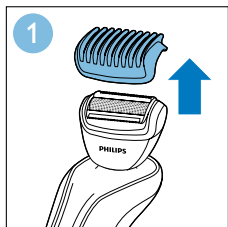
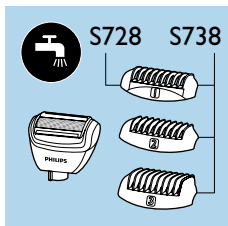


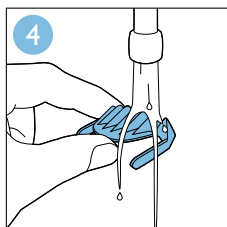
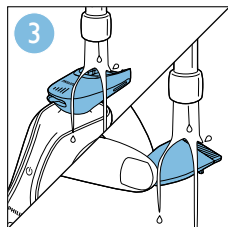
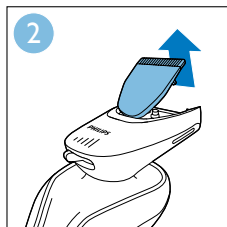
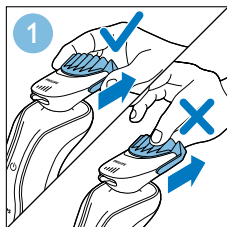
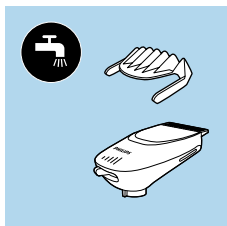
S738
S728

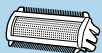




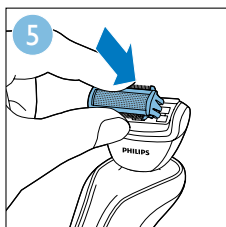
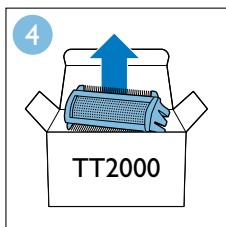
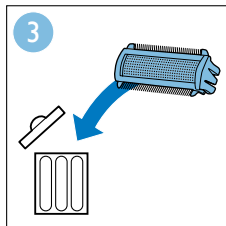
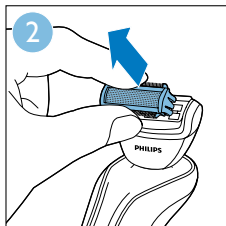
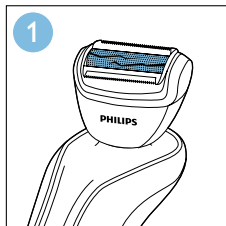


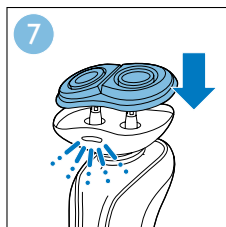
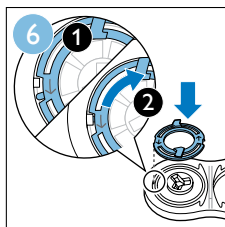
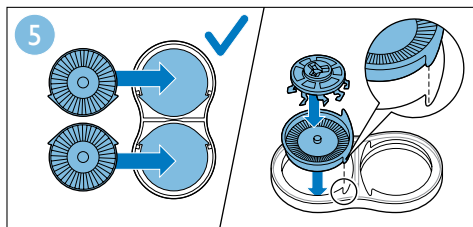
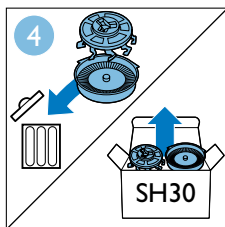
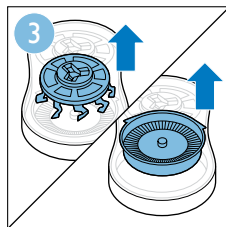
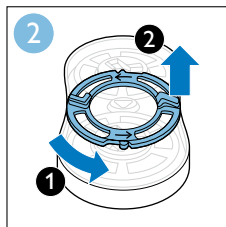
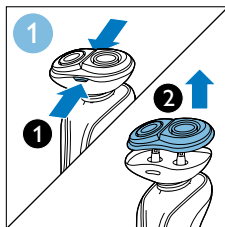
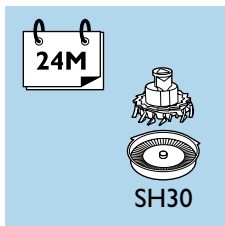






TT2000







4222.002.5734.3

www.philips.com