

# In-car coffee maker manual

Please read carefully before using the product

Model :ACM009

## Contents

### before use

Product structure/ product parameters ..... 3  
 Precautions ..... 4

### Instructions

(E version) Product specifications and operating procedures ..... 5-6  
 (N version) Product specifications and operating procedures ..... 7-8

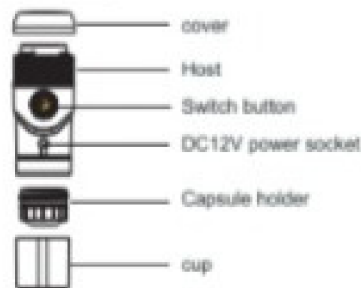
### Cleaning

After making coffee ..... 9

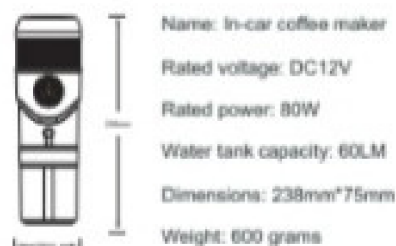
### Trouble shooting

Indicator light does not work ..... 10

### Product structure

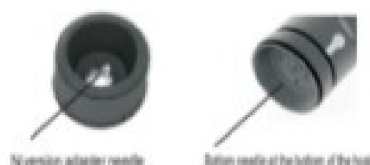


### product parameters

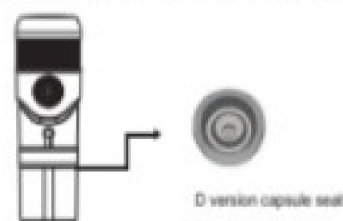


Please read the following notes carefully before using:

1. Please use the corresponding coffee capsules according to different versions (see outer box).
2. After filling the capsule, please confirm whether the capsule holder and the host are tight to prevent water leakage.
3. When adding water to the tank, the water volume cannot exceed the maximum water level line and must be pure water.
4. Suitable for use with DC12V car power supply, home adapter.
5. After making coffee, please clean the capsule holder and the host.
6. Be careful of rubbing the bottom of the main unit and the N type adapter needle when using or cleaning.
7. When cleaning, the main part should not be soaked in water and cleaned. Wipe it with a damp cloth.



(D version) product specifications and operating procedures:

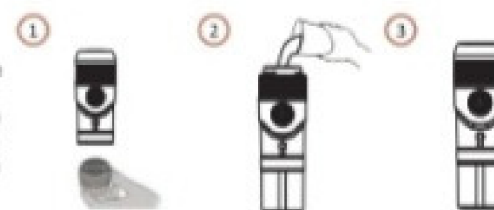


> Coffee capsule filling (using Dolce Gusto coffee capsule)



### Extracting coffee

1. Insert the capsule holder of the Dolce Gusto coffee capsule into the bottom of the main unit, ensuring tightening.
2. Put the product into the cup, then rotate the top cover to remove it, pour the appropriate amount of cold water, and then rotate the top cover.
3. Connect the product to the DC12V power supply, then press the switch to start the product and wait for 5-7 minutes for a cup of coffee.



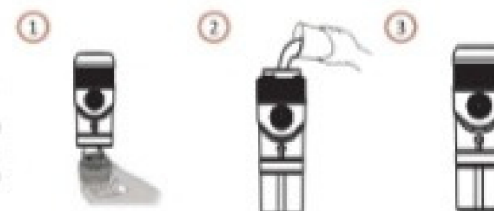
(N version) product specifications and operating procedures:

> Coffee capsule filling (using Nespresso genuine capsules)



### Extracting coffee

1. Insert the capsule holder of the Nespresso coffee capsule into the bottom of the main unit, ensuring tightening.
2. Put the product into the cup, then rotate the top cover to remove it, pour the appropriate amount of cold water, and then rotate the top cover.
3. Connect the product to the DC12V power supply, then press the switch to



### After making coffee every time

#### Cleaning

1. After the standby unit is completely cooled, remove and discard the used coffee capsules in the basin.
2. Rinse the base with clean water. There are many mesh holes at the bottom of the base. Please use a brush to rinse and ensure that the mesh is not blocked. The main body can be scrubbed with a damp cloth.
3. The main body can be scrubbed with a damp cloth.



Note: The main body cannot be soaked in water.

1. The indicator light flashes quickly and cannot work.  
 This is because the heater temperature is too high, the product is protected. If there is no water, please add water to the water tank. First cut off the power, then turn the power back on and restart the switch.
2. Water leaks at the capsule seat connection.  
 This is because the capsule seat is not tightened, please tighten the capsule seat.
3. The indicator is not lit and cannot work.  
 This is because the power supply is not connected and please reconnected.