

---

## **Introduction**

Before operating the unit, please read this manual carefully, and retain it for future reference.

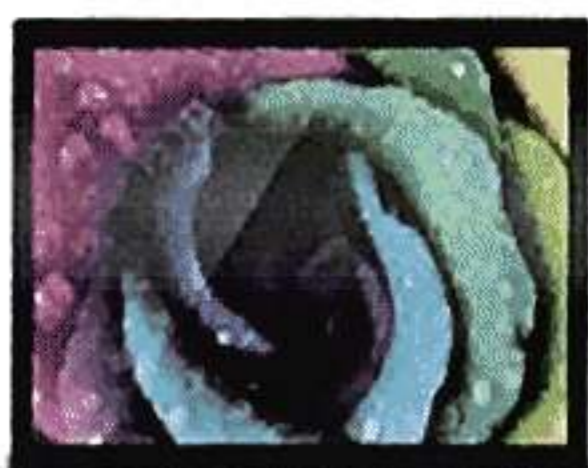
This manual will help you use the many exciting and useful features that will make your photo frame viewing more enjoyable. It includes a step by step guide to the basics on photo frame operation including instructions on uploading and playing photos, music or video.

## **Features**

- ◆ Support MPEG2/MPEG4/H.264/RMVB/AVI,(.avi/.mov/.ts/.mpg/.m2ts/.mkv) etc.1080P max.
- ◆ Support MP3/WMA/AC3 etc.
- ◆ Support JPEG
- ◆ SD/MMC/MS card slot.
- ◆ USB 2.0,support USB hard disk
- ◆ AV input
- ◆ HDMI input
- ◆ 2\*5W speaker box
- ◆ Standard VESA wall mounting
- ◆ Remote control

## **Package Contents**

Please make sure all of the following are present when you unpack your Digital Photo Frame.



Digital Photo Frame



Remote Control



Power Adapter



Power Cable



Stand



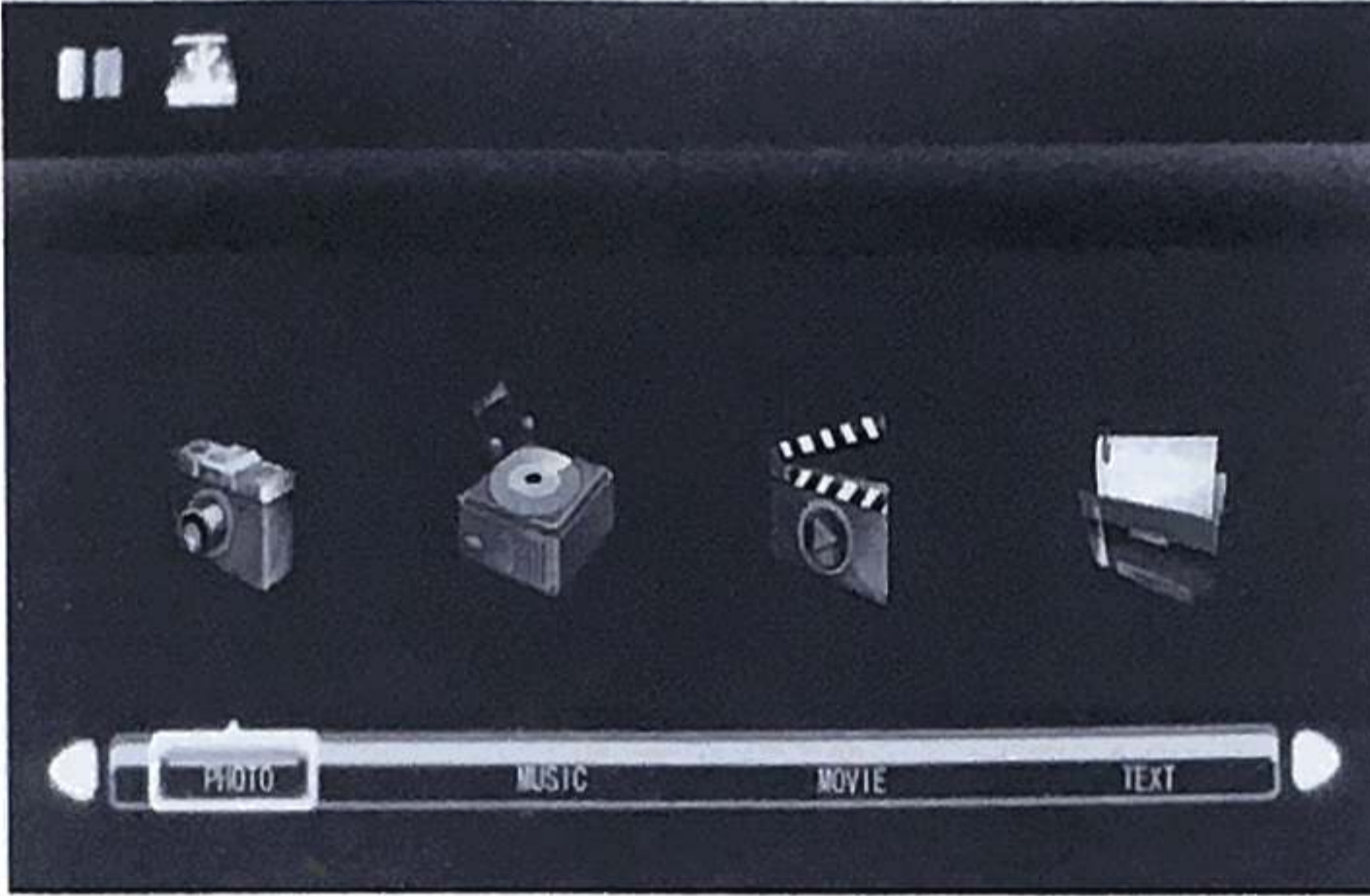
Anti-Theft Cover With Two Screws



---

## Main Menu

- After turning on the unit, this screen will appear:



- The memory device (USB/USB hard disk/SD/MMC/MS) you have inserted, The device icon will highlight on the left of the screen.
- You can Use the [◀][▶] buttons on the back of the unit or on your remote control to choose the function you want, then press OK to select the menu item.

## Viewing Your Photos

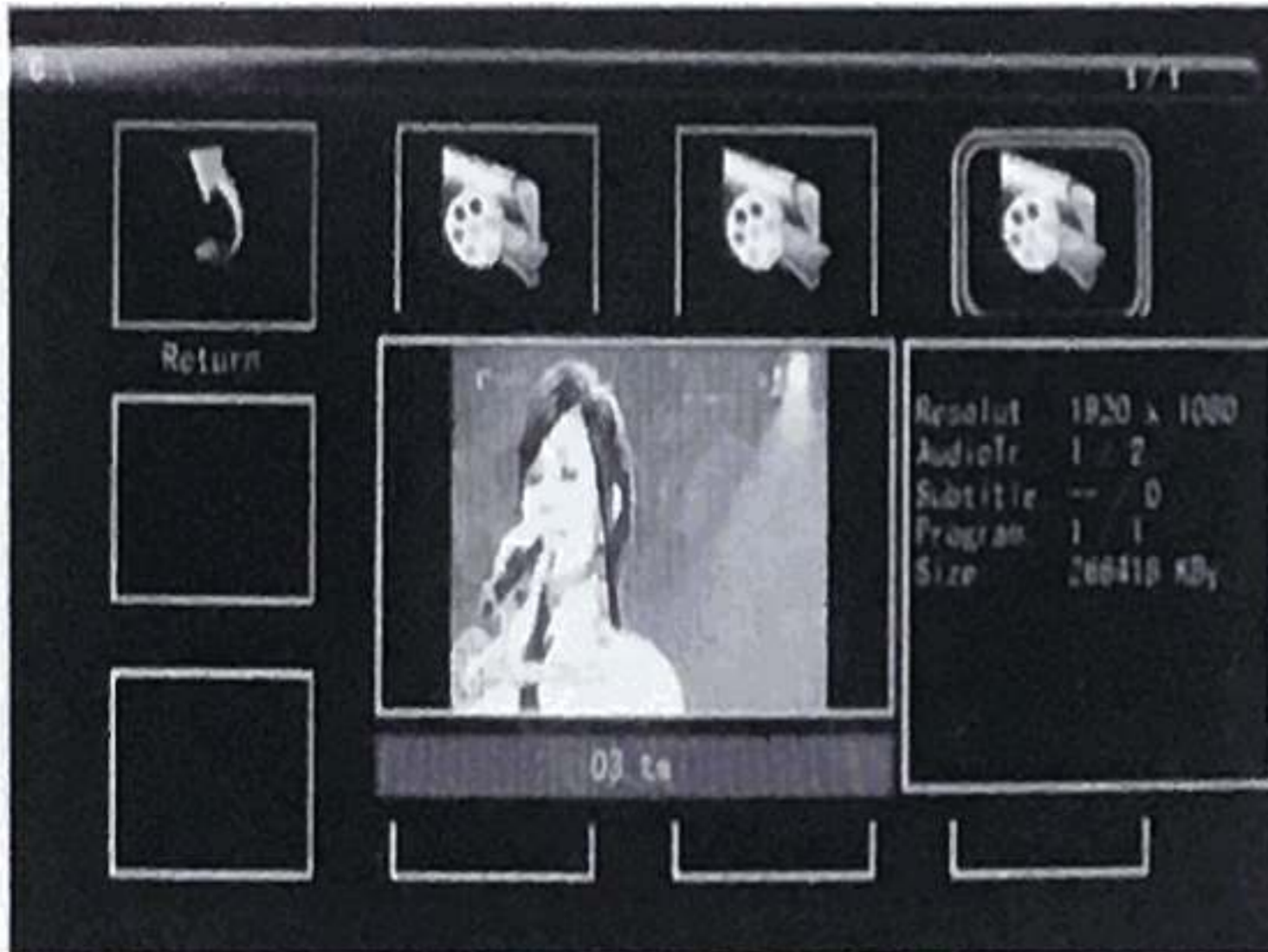
- Select the Photo icon from the main menu and then press ENTER. Use the [◀][▶] buttons to select the memory device and then press ENTER, You will now have access to your photos in thumbnail view. You can navigate through your photos using the [◀][▶][▲][▼] buttons. Press ENTER to start playing your photos.



## Viewing Your Videos



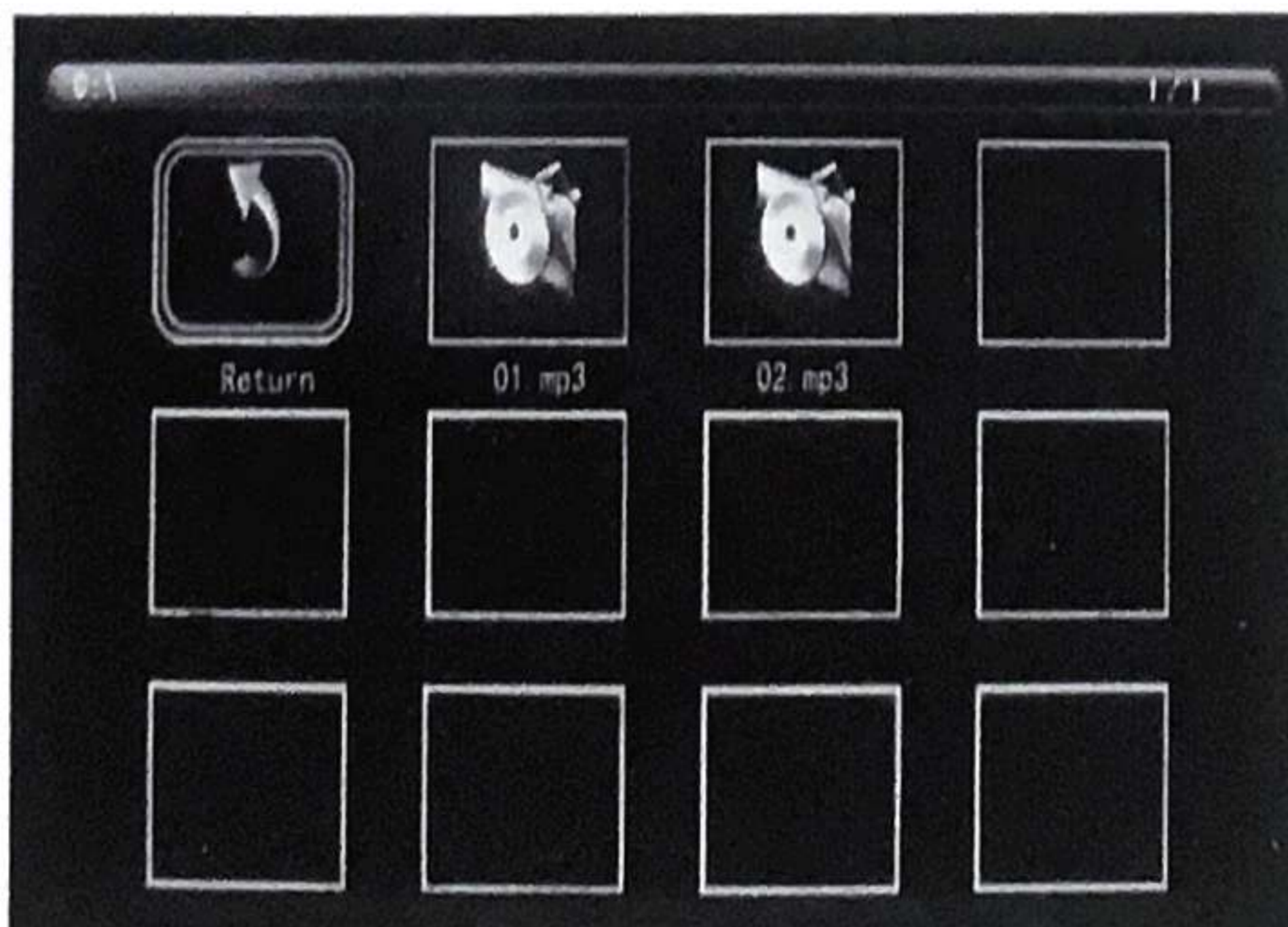
- 
- Select the Movie icon from the main menu and then press ENTER. Use the [◀][▶] buttons to select the memory device and then press ENTER ,Your Video files will show on the screen.
  - You can navigate through your video using the [◀][▶][▲][▼] buttons. Press ENTER to play.



### **Listening To Your Music**

- Select the Music icon from the main menu and then press ENTER. Using the [◀][▶] buttons to select the memory device and then press ENTER ,Your Music files will show on the screen.

You can navigate through your music using the [◀][▶][▲][▼] buttons. Press ENTER to play.

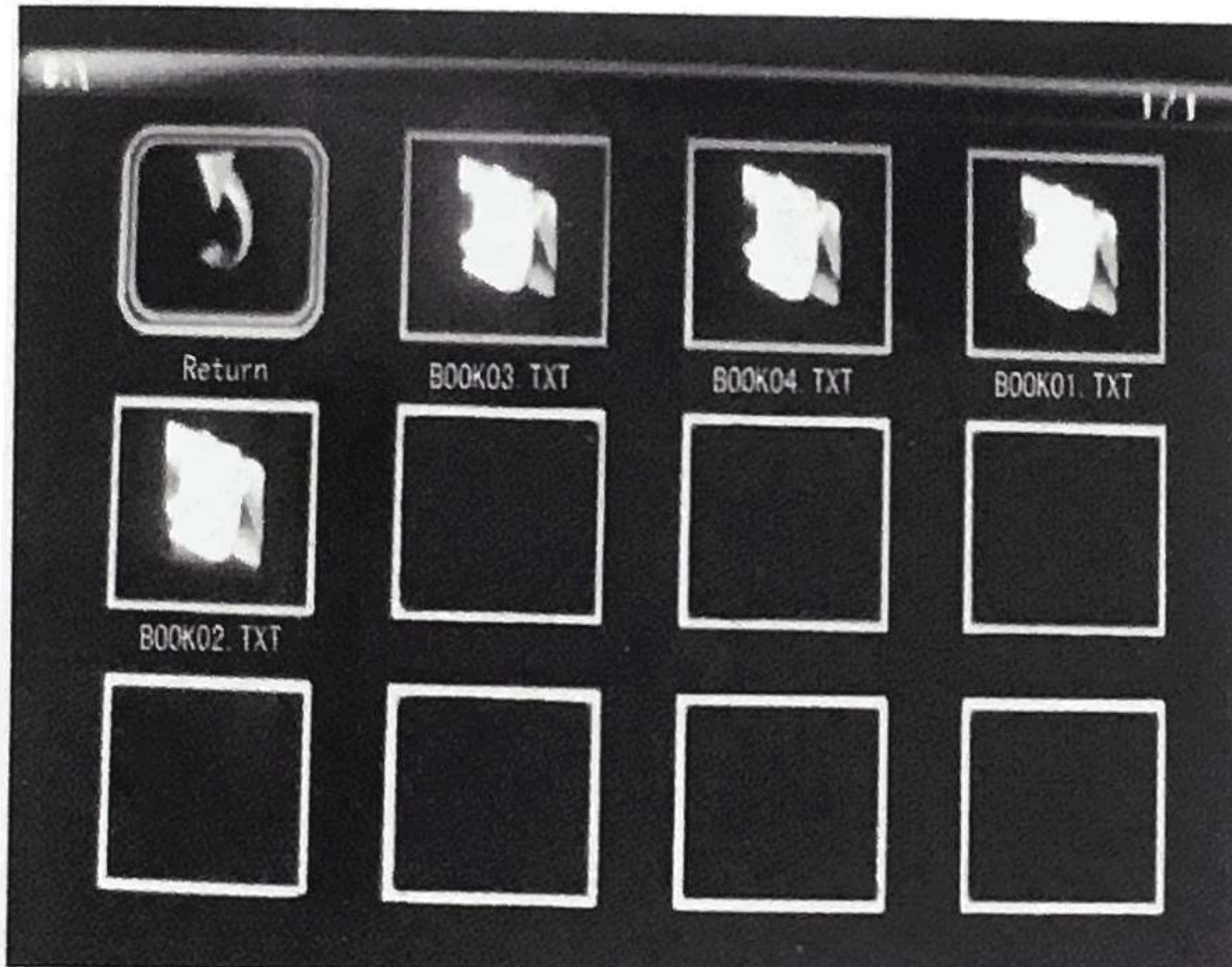




## **E-BOOK**

- Select the TEXT icon from the main menu and then press ENTER. Using the [◀][▶] buttons to select the memory device and then press ENTER ,Your text files will show on the screen.

You can navigate through your text file using the [◀][▶][▲][▼] buttons. Press ENTER to read.(support txt file only)

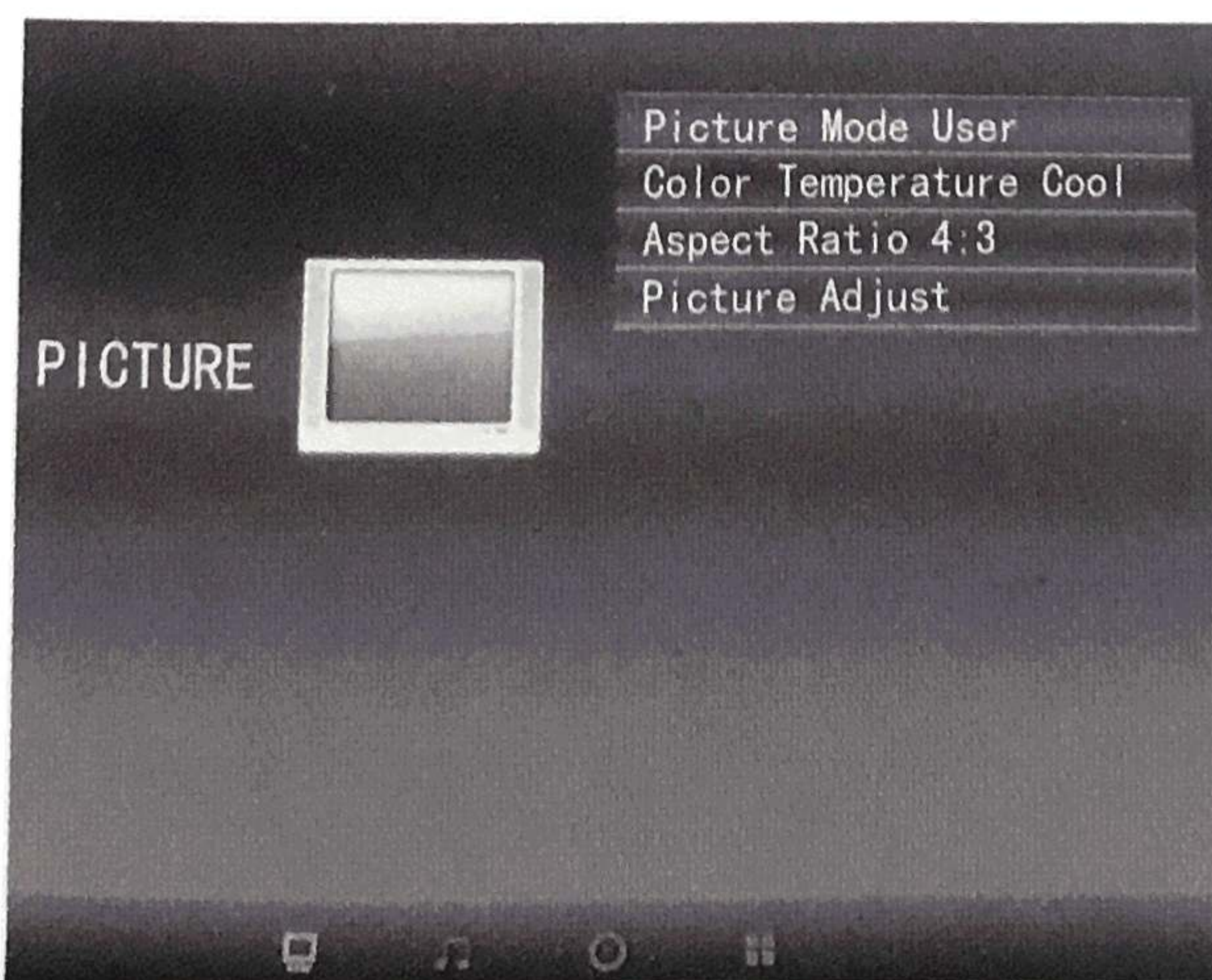


## **Settings**

Press setup button on the remote control to adjust the settings on your Digital Photo Frame.

you will see the various options:

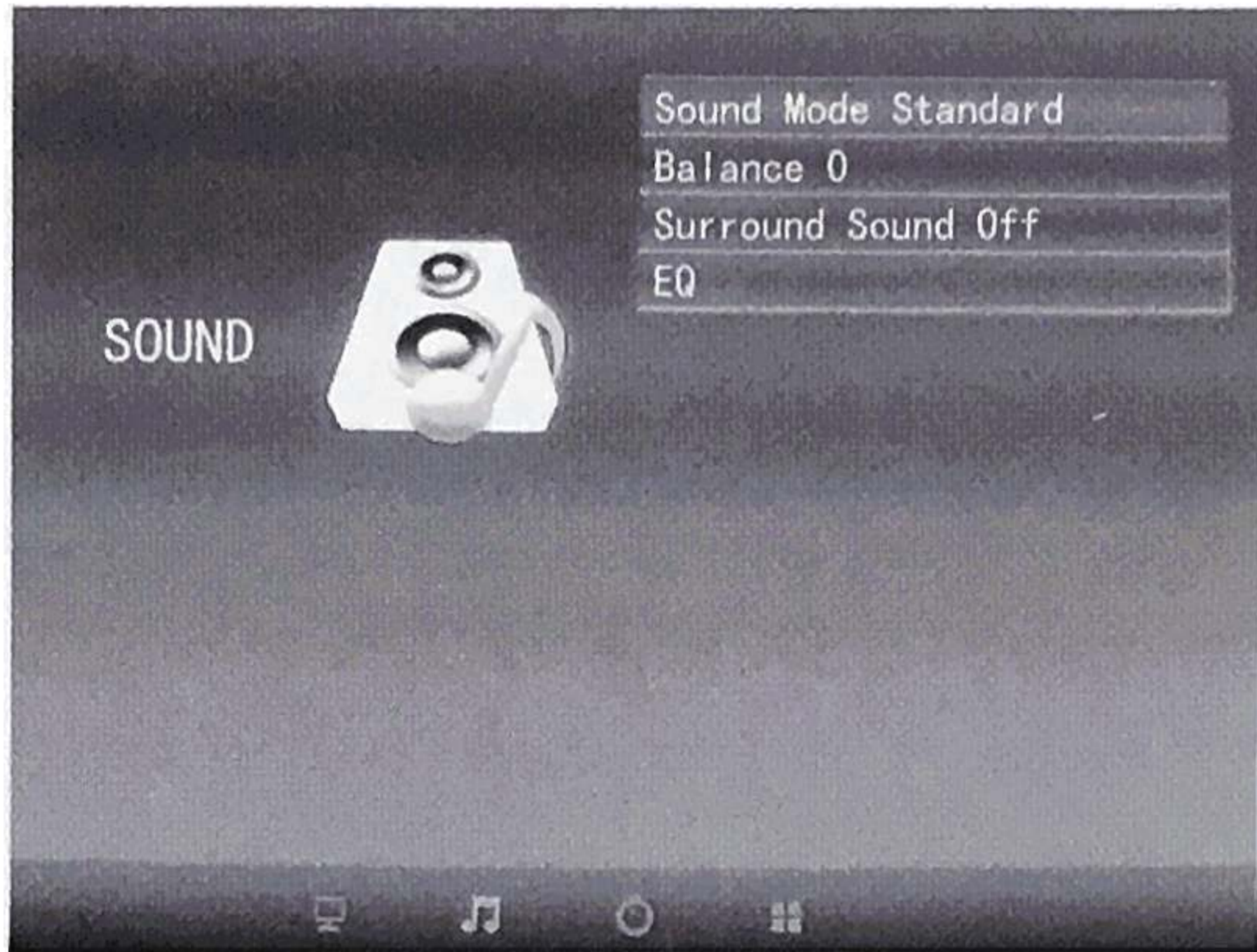
### **Display setting:**





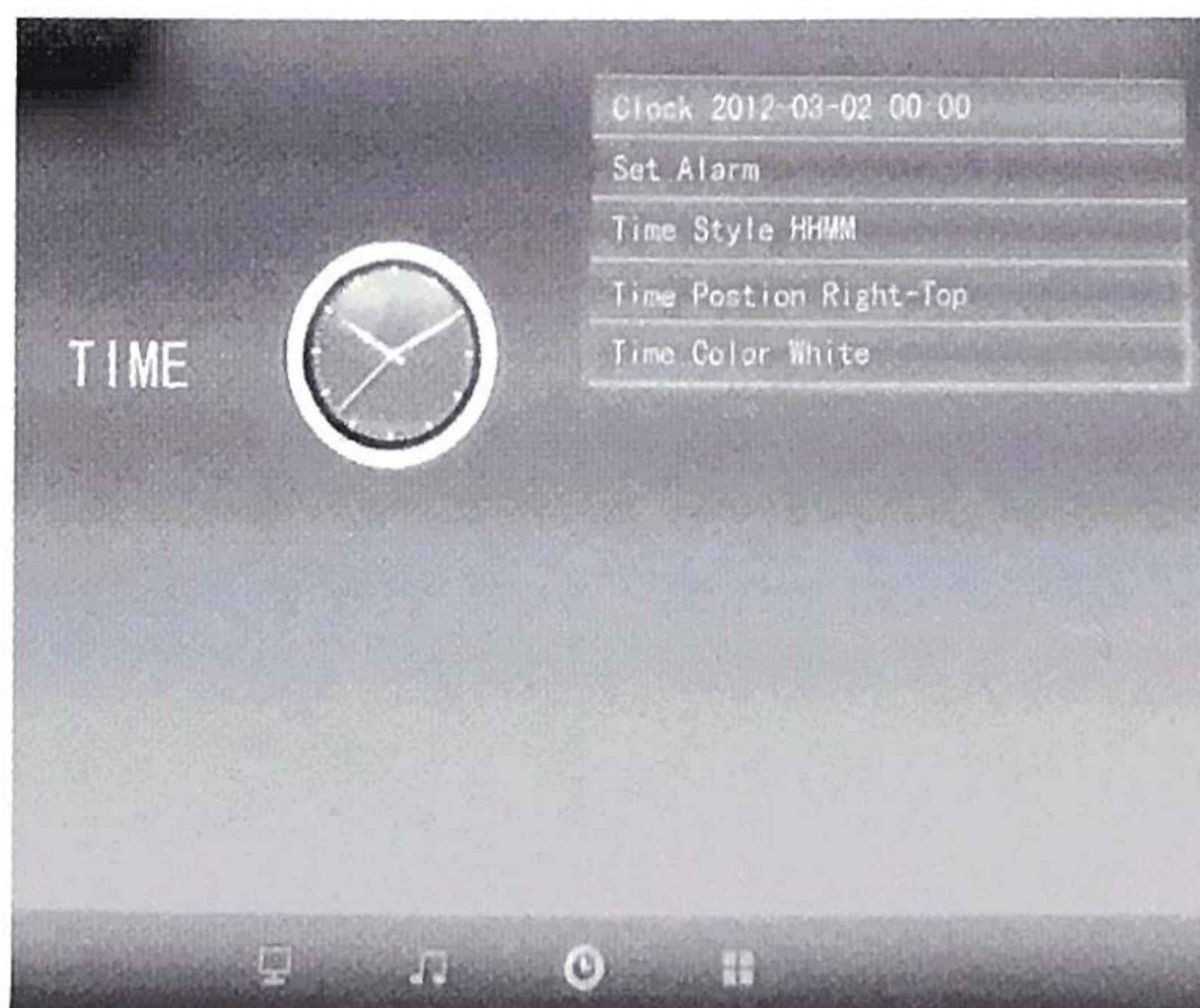
- 
1. Using the [▲][▼] buttons to select and then press ENTER to adjust the display setting.
  2. Using the [◀][▶] buttons to select next menu option.(Picture/Sound/Time/Option)

**Sound Setting:**



Using the [▲][▼] buttons to select and then press ENTER to adjust the sound setting.

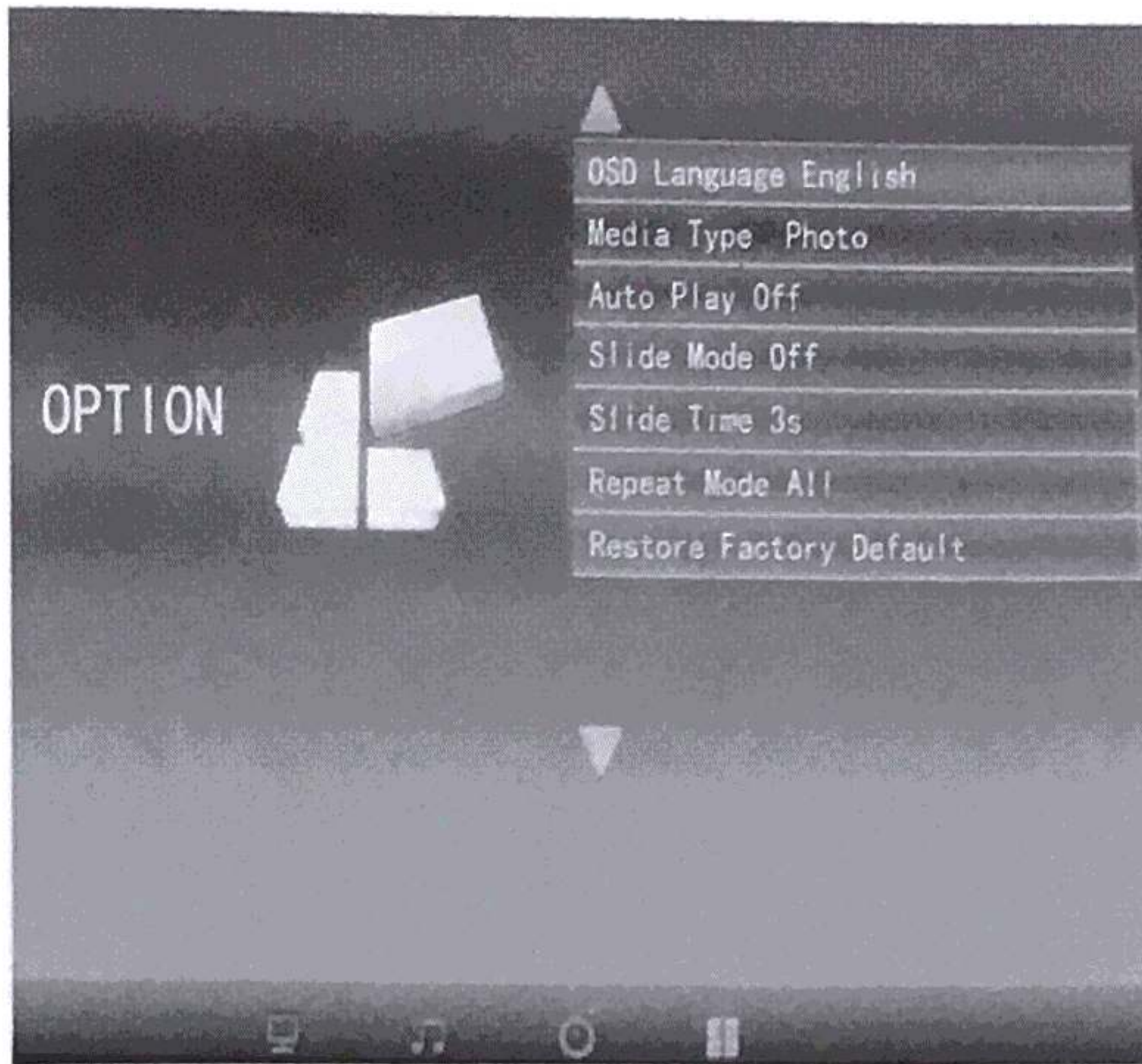
**Time Setting:**



Using the [▲][▼] buttons to select and then press ENTER to adjust the time setting.



## System Setting:



Using the [▲][▼] buttons to select and then press ENTER to adjust the system option setting.