

**Oral-B®**

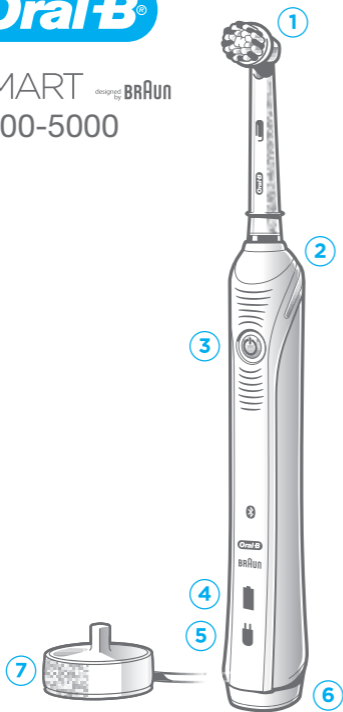
SMART designed by BRAUN  
1000-5000

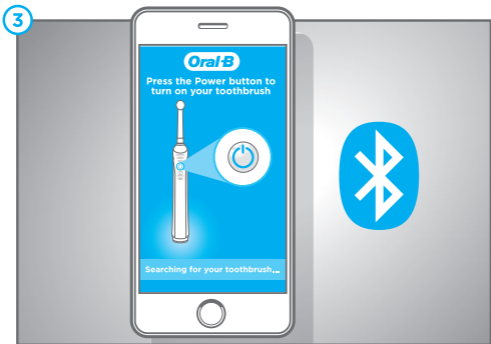
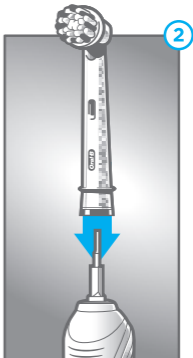
 **Bluetooth®**



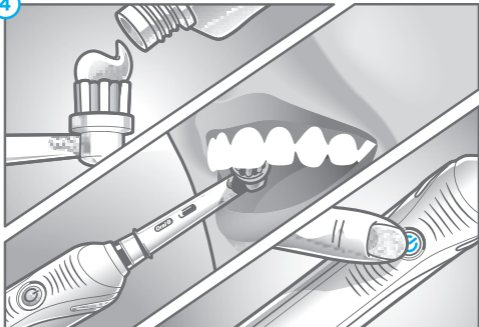
# Oral-B®

SMART designed by BRAUN  
1000-5000

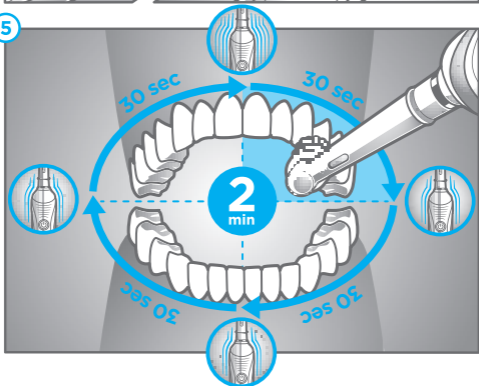


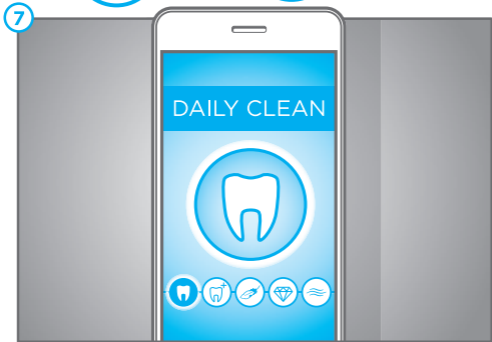
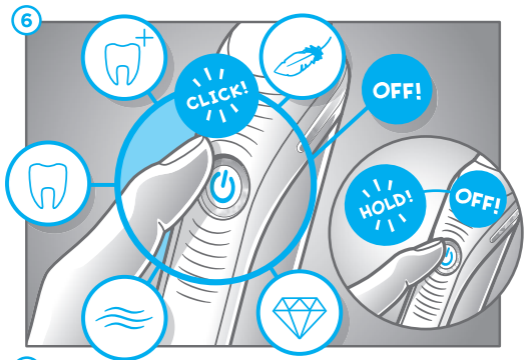


4

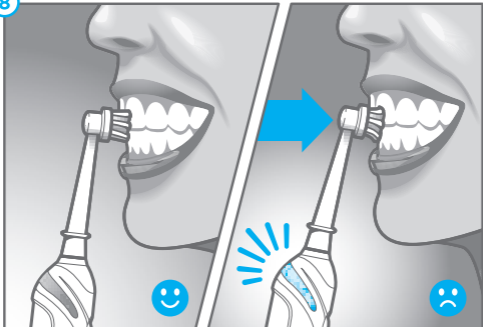


5

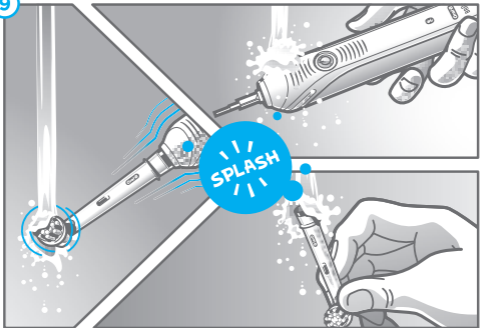




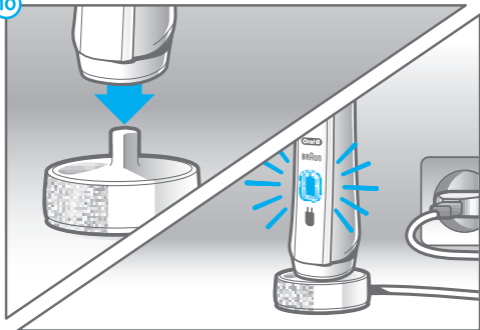
8



9



10



---

## DE – Anleitung Schnellstart

---

### Beschreibung

- ① Aufsteckbürste
- ② Visuelle Andruckkontrolle
- ③ Ein-/Ausschalter  
(Moduswahl)
- ④ Ladekontrollleuchte
- ⑤ Niedrig-Ladekontrollleuchte
- ⑥ Handstück
- ⑦ Ladestation  
(modellabhängig)

---

## GB – Quick Start Guide

---

### Description

- ① Brush head
- ② Pressure sensor light
- ③ On/off button (mode  
selection)
- ④ Charge indicator light
- ⑤ Low charge indicator light
- ⑥ Handle
- ⑦ Charger / Charger base  
(depending on model)

---

## FR- Guide de démarrage rapide

---

### Description

- ① Brossette
- ② Voyant du capteur de  
pression
- ③ Bouton marche/arrêt  
(sélection des modes)
- ④ Voyant indicateur de niveau  
de charge
- ⑤ Voyant indicateur de  
batterie déchargée
- ⑥ Corps de brosse
- ⑦ Chargeur/base de  
chargement (suivant le  
modèle)

---

## ES – Guía rápida de inicio

---

### Descripción

- ① Cabezal del cepillo
- ② Luz del sensor de presión
- ③ Botón de encendido/  
apagado (selección  
de modo)
- ④ Luz del indicador de carga
- ⑤ Luz indicadora de batería  
baja
- ⑥ Mango
- ⑦ Cargador / Base de carga  
(según modelo)





---

## **PT – Guia de Introdução**

---

### **Descrição**

- ① Cabeça de escovagem
- ② Luz do sensor de pressão
- ③ Botão ligar/desligar (seleção de modo)
- ④ Luz indicadora de carga
- ⑤ Luz indicadora de pouca carga
- ⑥ Cabo
- ⑦ Carregador / Base de carregamento (dependendo do modelo)

---

## **IT – Guida Rapida**

---

### **Descrizione**

- ① Testina per spazzolino
- ② Spia del sensore di pressione
- ③ Pulsante on/off (selezione modalità)
- ④ Indicatore del livello di ricarica
- ⑤ Indicatore del livello ricarica bassa
- ⑥ Manico
- ⑦ Caricatore / Base di ricarica (in base al modello)

---

## **NL – Gids voor snel opstarten**

---

### **Omschrijving**

- ① Opzetborstel
- ② Poetsdruk sensor lampje
- ③ Aan/uit schakelaar (poetsstandselectie)
- ④ Oplaad indicatielampje
- ⑤ Lage batterij indicatielampje
- ⑥ Handgreep
- ⑦ Oplader/Oplaadstation (afhankelijk van het model)

---

## **DK – Hurtigguide**

---

### **Beskrivelse**

- ① Børstehoved
- ② Tryksensorlys
- ③ Tænd-/slukknop (valg af funktion)
- ④ Indikatorlys for opladning
- ⑤ Indikatorlys for lavt batteri
- ⑥ Tandbørste
- ⑦ Oplader/laderdel (afhængigt af model)

---

## NO – Hurtigguide

---

### Beskrivelse

- ① Børstehode
- ② Trykksensorlys
- ③ På/av-knapp  
(innstillingsvalg)
- ④ Ladeindikatorlys
- ⑤ Indikatorlys for lavt  
batterinivå
- ⑥ Håndtak
- ⑦ Lader/Ladabase  
(avhengig av modell)

---

## SE – Snabbstartsguide

---

### Beskrivning

- ① Borsthuvud
- ② Trykksensorlampa
- ③ På-/av-knapp (funktionsval)
- ④ Lampa, laddningsindikator
- ⑤ Indikatorlampa för låg  
batterispänning
- ⑥ Tandborsthandtag
- ⑦ Laddare/laddningsstation  
(beroende på modell)

---

## FI – Pikaopas

---

### Kuvaus

- ① Harjaspää
- ② Paineentunnistimen  
merkkivalo
- ③ Virtapainike (harjaustilan  
valitsin)
- ④ Latauksen merkkivalo
- ⑤ Alhaisen latauksen  
merkkivalo
- ⑥ Runko-osa
- ⑦ Laturi / latausalusta  
(mallista riippuen)

---

## GR – Οδηγός γρήγορης έναρξης

---

### Περιγραφή

- ① Κεφαλή βουρτσίσματος
- ② Φωτεινή ένδειξη αισθητήρα  
πίεσης
- ③ Κουμπί ενεργοποίησης/  
απενεργοποίησης (επιλογή  
προγράμματος)
- ④ Φωτεινή ένδειξη φόρτισης
- ⑤ Φωτεινή ένδειξη χαμηλής  
μπαταρίας
- ⑥ Λαβή οδοντόβουρτσας
- ⑦ Φορτιστής / Βάση φορτιστή  
(αναλόγως το μοντέλο)



DE	AT	00 800 27 28 64 63
CH		08 44 - 88 40 10
GB		0 800 731 1792
IE		1 800 509 448
FR		0 800 944 803 (service et appel gratuits)
BE		0 800 14 592
LU		800 21172
ES		900 814 208
PT		808 20 00 33
IT		800 124 600
NL		0800-4 45 53 88
DK		70 15 00 13
NO		22 63 00 93
SE		020 - 21 33 21
FI		020 377 877
GR		800 801 3457
ZA		Consumer Care Line 0860 112 188 (Sharecall charged at local rates)

[www.oralb-blendamed.de](http://www.oralb-blendamed.de)  
[www.oralb.com](http://www.oralb.com)  
[www.braun.com](http://www.braun.com)  
[www.service.braun.com](http://www.service.braun.com)

Braun GmbH  
Frankfurter Straße 145  
61476 Kronberg/Germany

**Center Type 3724 /**  
**Charger Type 3757**  
**Handle Type 3767**

91470059/IX-17  
D/GB/F/E/P/I/NL/DK/N/S/FIN/GR