



SANITAIR FILLER

REPARATIESET KERAMIEK

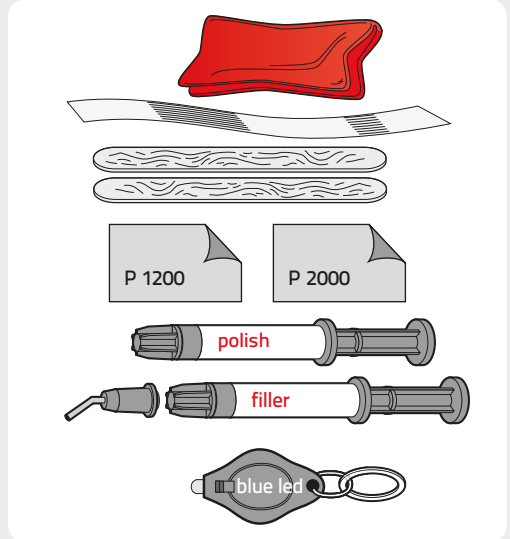
SANITAIR FILLER

REPARATIESET KERAMIEK

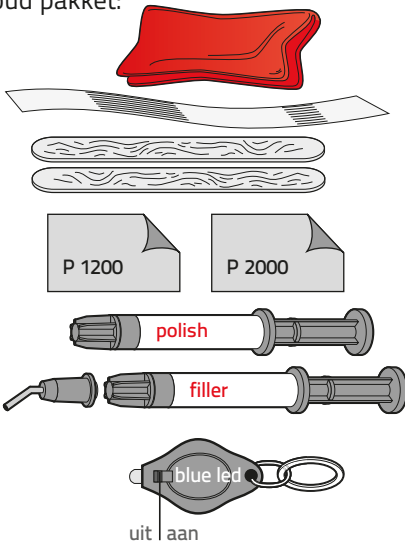
Geleverd door Beltraco Benelux B.V.



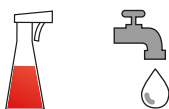
Biestkampweg 21
5249 JV Rosmalen (NL)
T +31 (0)73 - 645 03 43
W www.beltraco.nl
E info@beltraco.nl



Inhoud pakket:

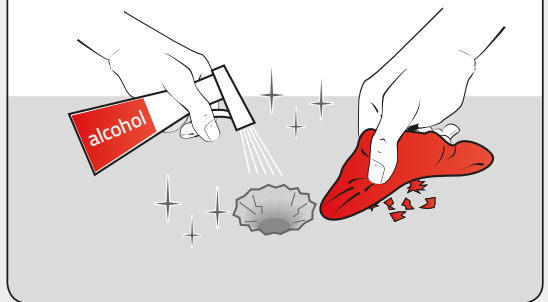


Eigen benodigheden: alcohol en water



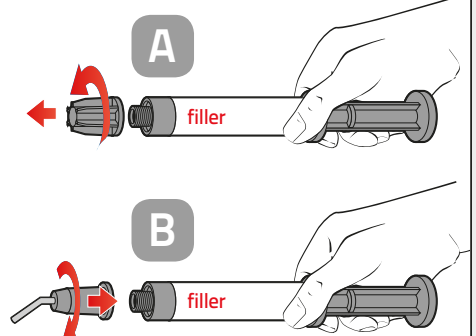
1

Reinigen met alcohol of spiritus

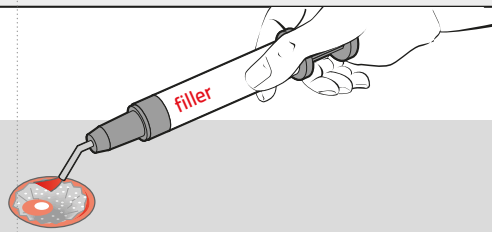


2

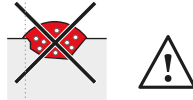
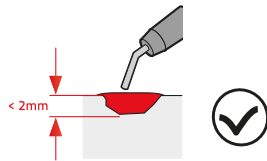
Microtip aanbrengen



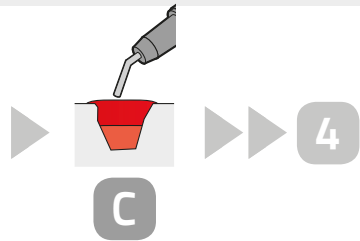
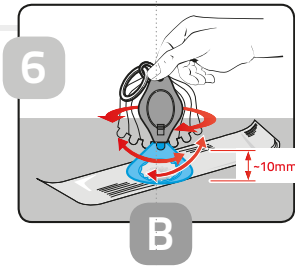
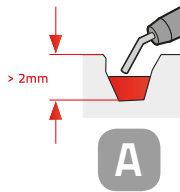
3



3.1 < 2mm filler

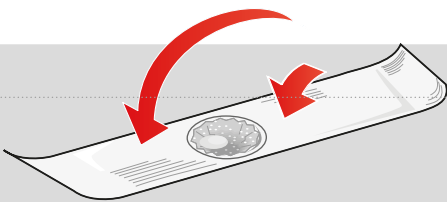


3.2 > 2mm filler



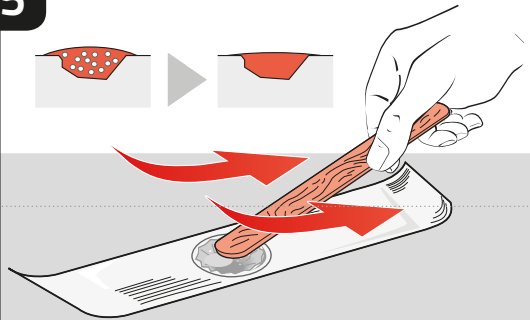
4

Transparante folie



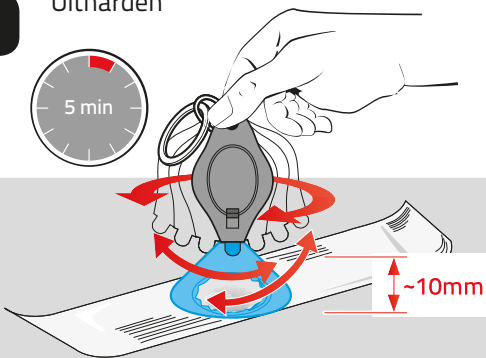
5

Eventuele luchtbelletjes verwijderen



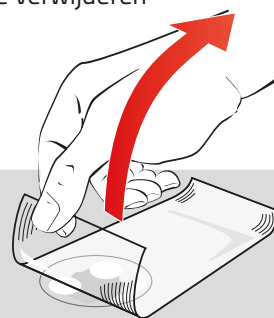
6

Uitharden



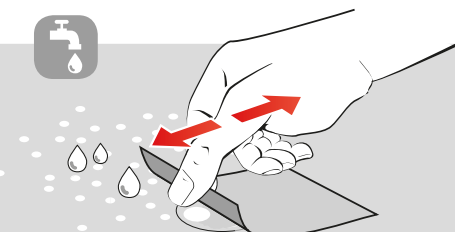
7

Folie verwijderen



8

Voorzichtig schuren



9

Op glans polijsten

