

≡ NEXT LEVEL RACING ≡

\*electronics not included



# F-GT LITE



MANUAL

**THANK YOU FOR PURCHASING THE NEXT LEVEL RACING F-GT LITE**  
If you require any support with your product please contact our friendly team at:  
[support@nextlevelracng.com](mailto:support@nextlevelracng.com)

# BE FAST OR BE LAST!

**HOWEVER, TAKE YOUR  
TIME WITH THESE INSTRUCTIONS TO  
GET THE MOST OUT YOUR F-GT LITE.**

**ASSEMBLY  
VIDEO**



**CRITICAL** (WATCH VIDEO INSTRUCTIONS)  
[bit.ly/nlrbuild](https://bit.ly/nlrbuild)

## WARNING



- Please do not use power tools for assembly as over tightening can damage your frame.
- Do not adjust the hubs while user is sitting in cockpit. Make sure user is out of the cockpit before adjusting.
- Make sure the hubs are tightened fully before using the cockpit. (spin the hub clockwise to ensure it is fully tight)
- Make sure strap on wheel bar is tight when adjusting the hubs otherwise the wheel will fall.



### WARNING

**CHOKING HAZARD** - Small parts not for children under 3 years or any individuals who have a tendency to place inedible objects into their mouths

If you require any support with your product  
please contact our friendly team at:

**[support@nextlevelracing.com](mailto:support@nextlevelracing.com)** for a prompt response.

**URL:** [bit.ly/nlrbuild](https://bit.ly/nlrbuild)

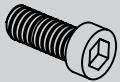


**CRITICAL  
ASSEMBLY  
VIDEO**



## IN THE BOX

### FOR HARDMOUNT WHEEL & PEDALS



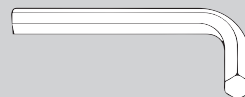
**8 X M6 15MM**



**8 X M6 WASHERS**



**4 X M6 NUTS**



**1 x ALLEN KEY  
WITH PHILLIPS HEAD**

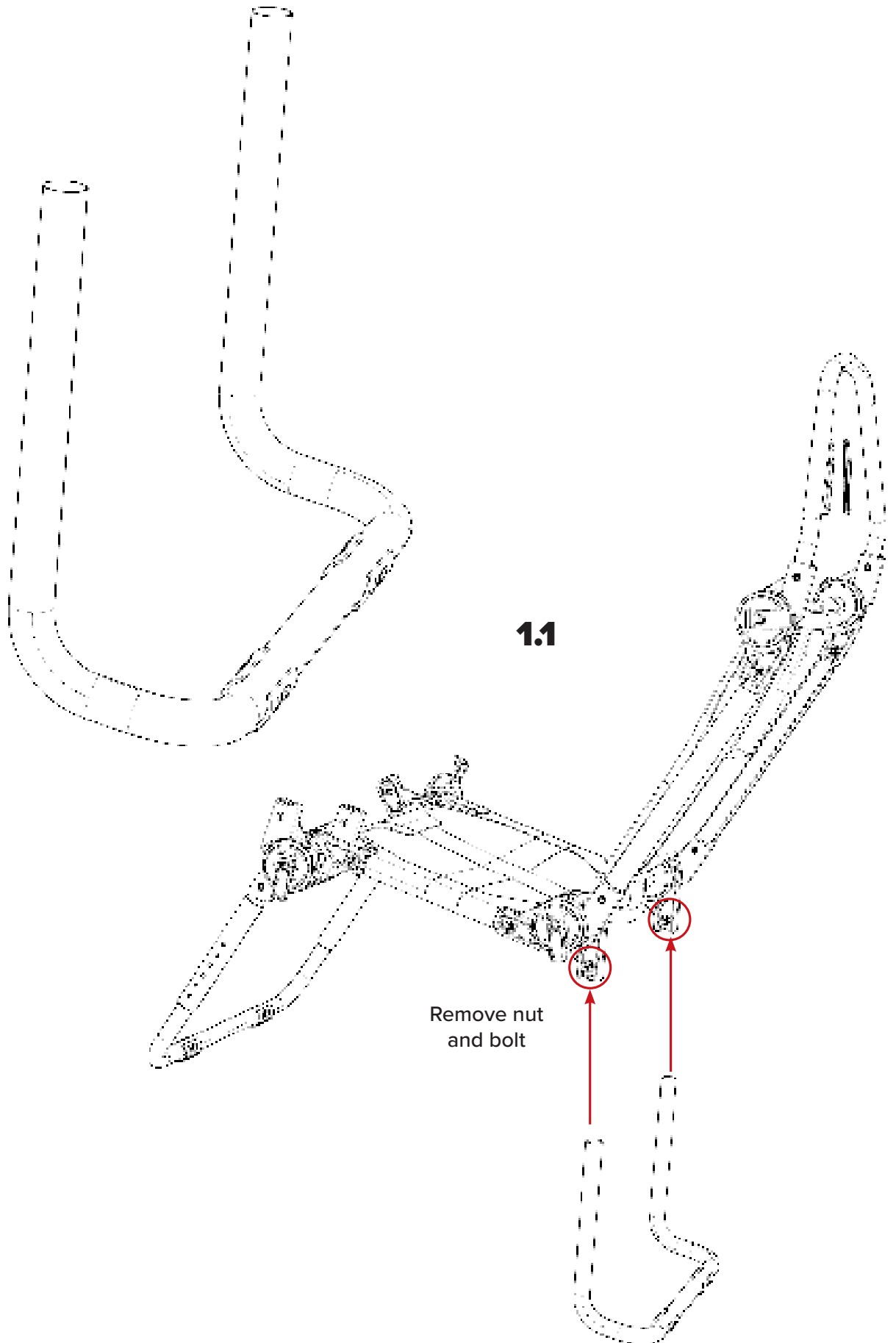


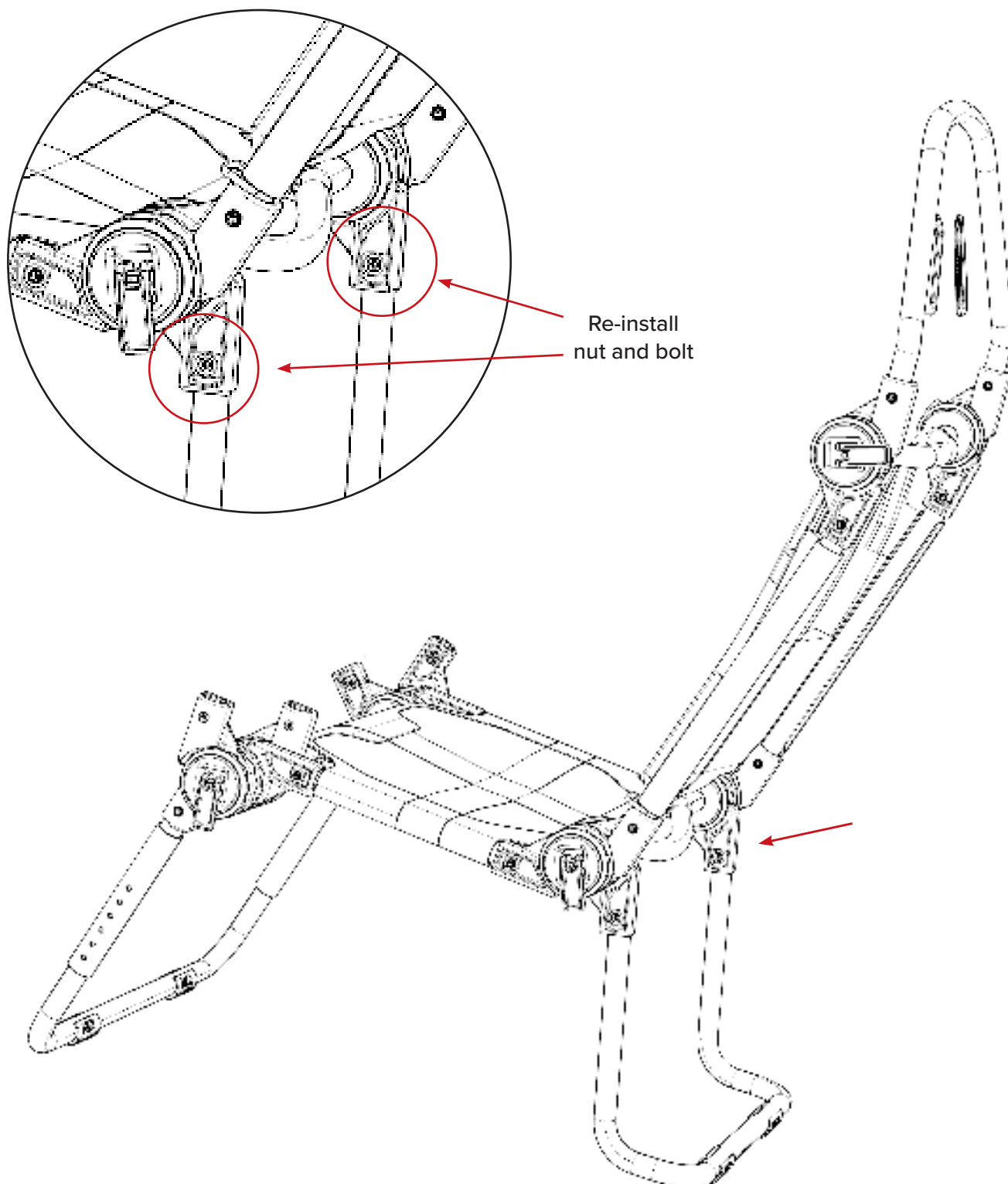
**1 X WRENCH**



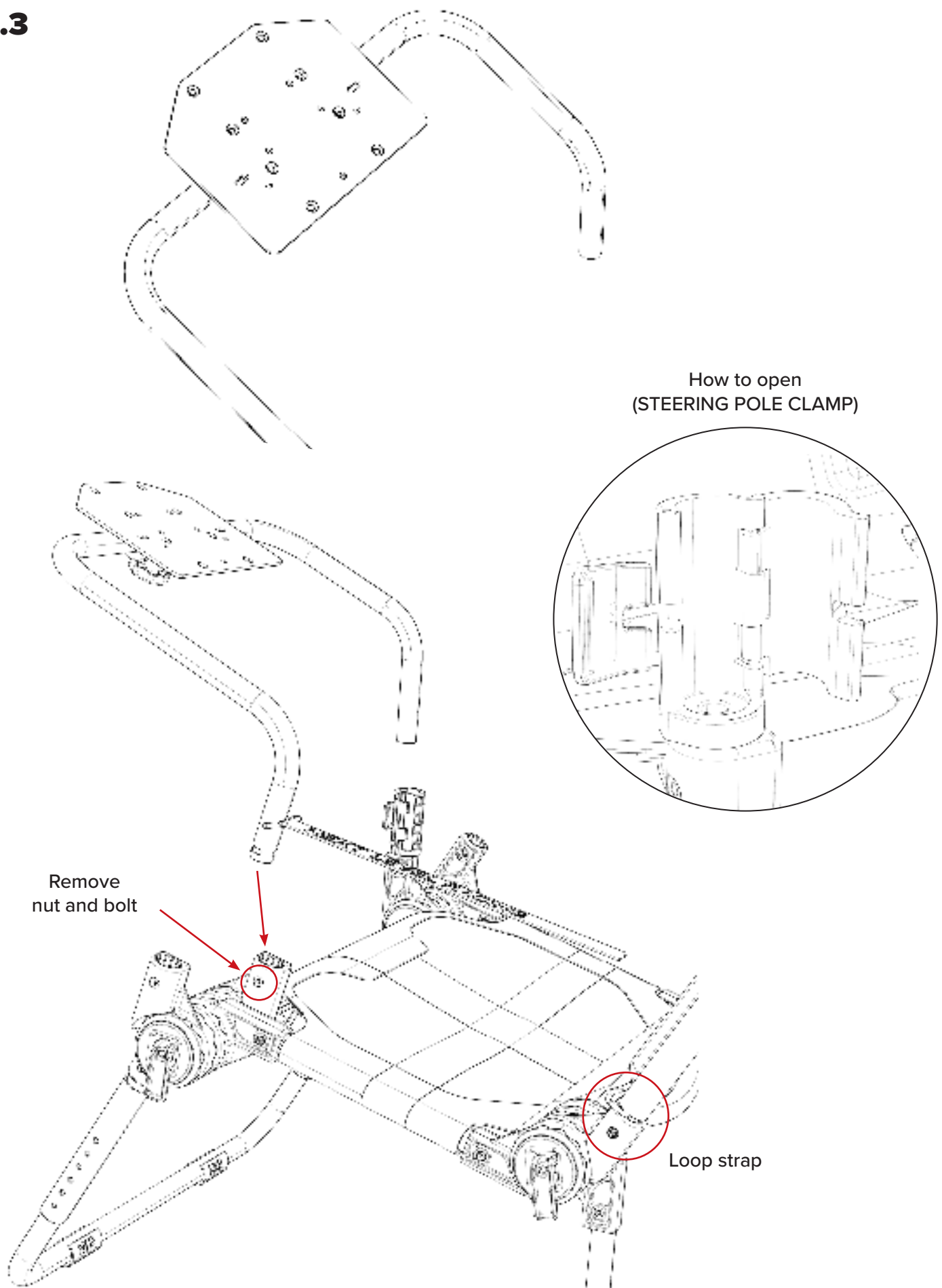
**For assistance please contact: [support@nextlevelracing.com](mailto:support@nextlevelracing.com)  
[www.nextlevelracing.com](http://www.nextlevelracing.com)**

**1.0**





## 1.3



## 1.4

URL: [bit.ly/nlrbuild](https://bit.ly/nlrbuild)



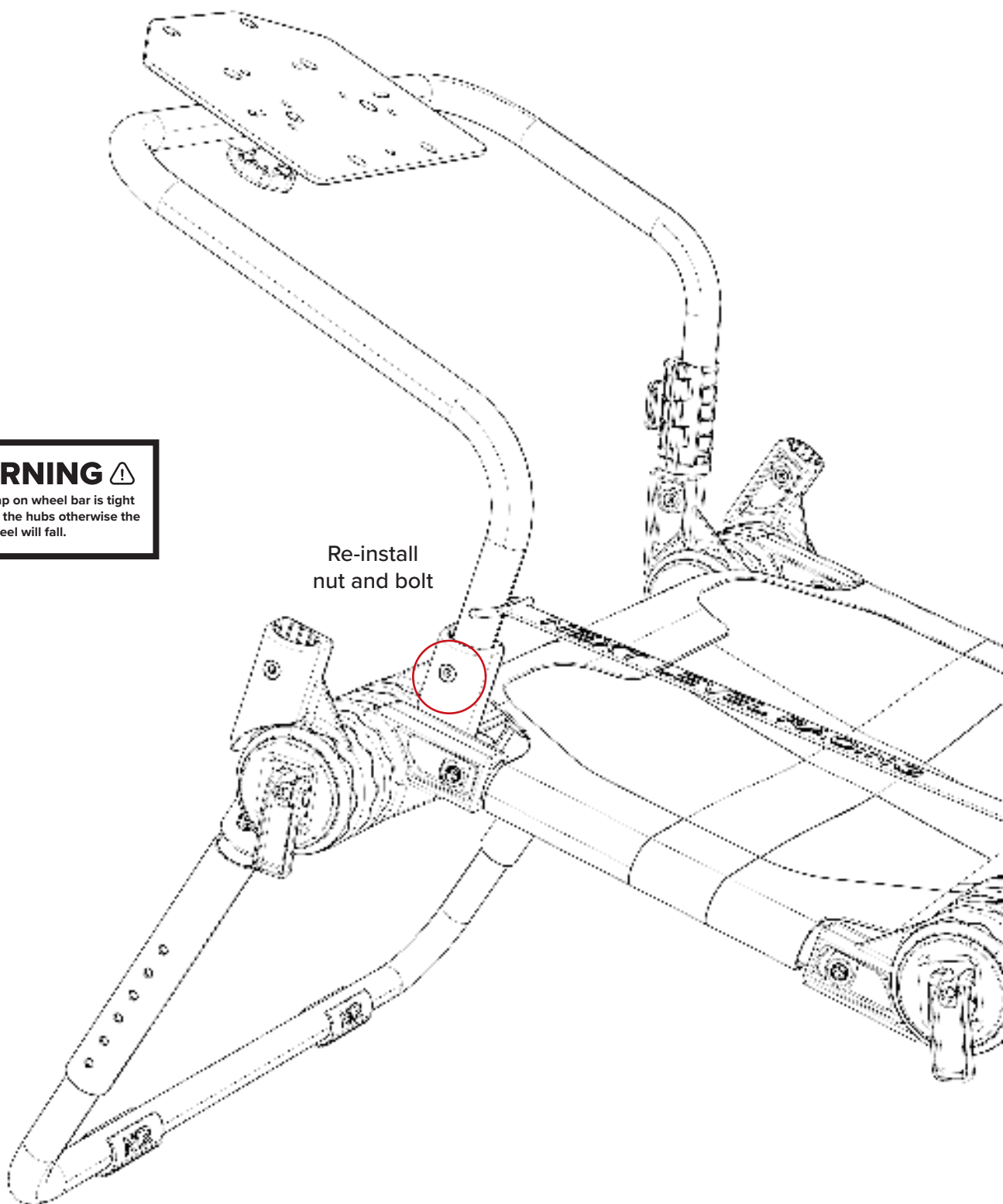
**CRITICAL  
ASSEMBLY  
VIDEO**



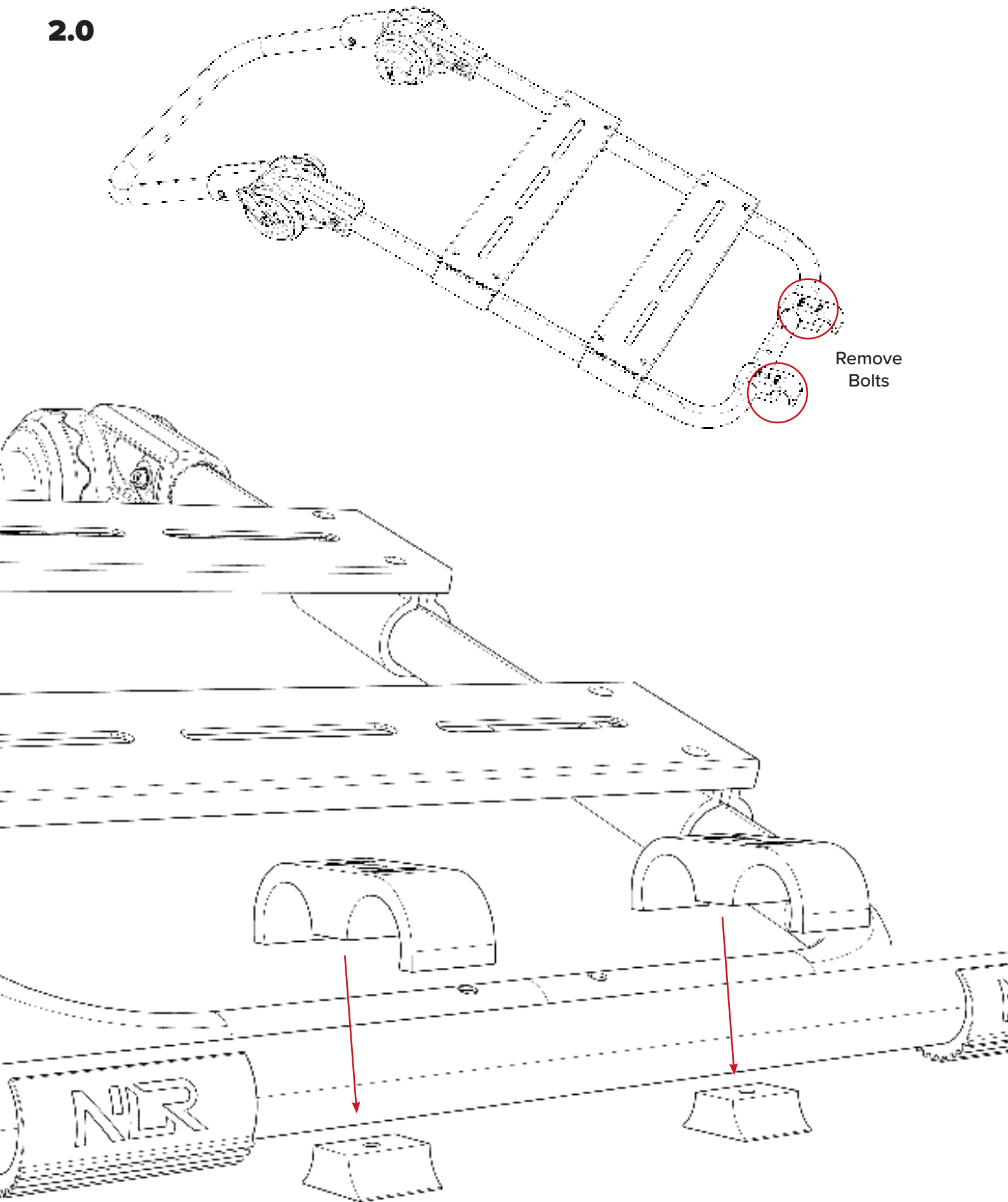
### **⚠ WARNING ⚠**

Make sure strap on wheel bar is tight when adjusting the hubs otherwise the wheel will fall.

Re-install  
nut and bolt



**2.0**



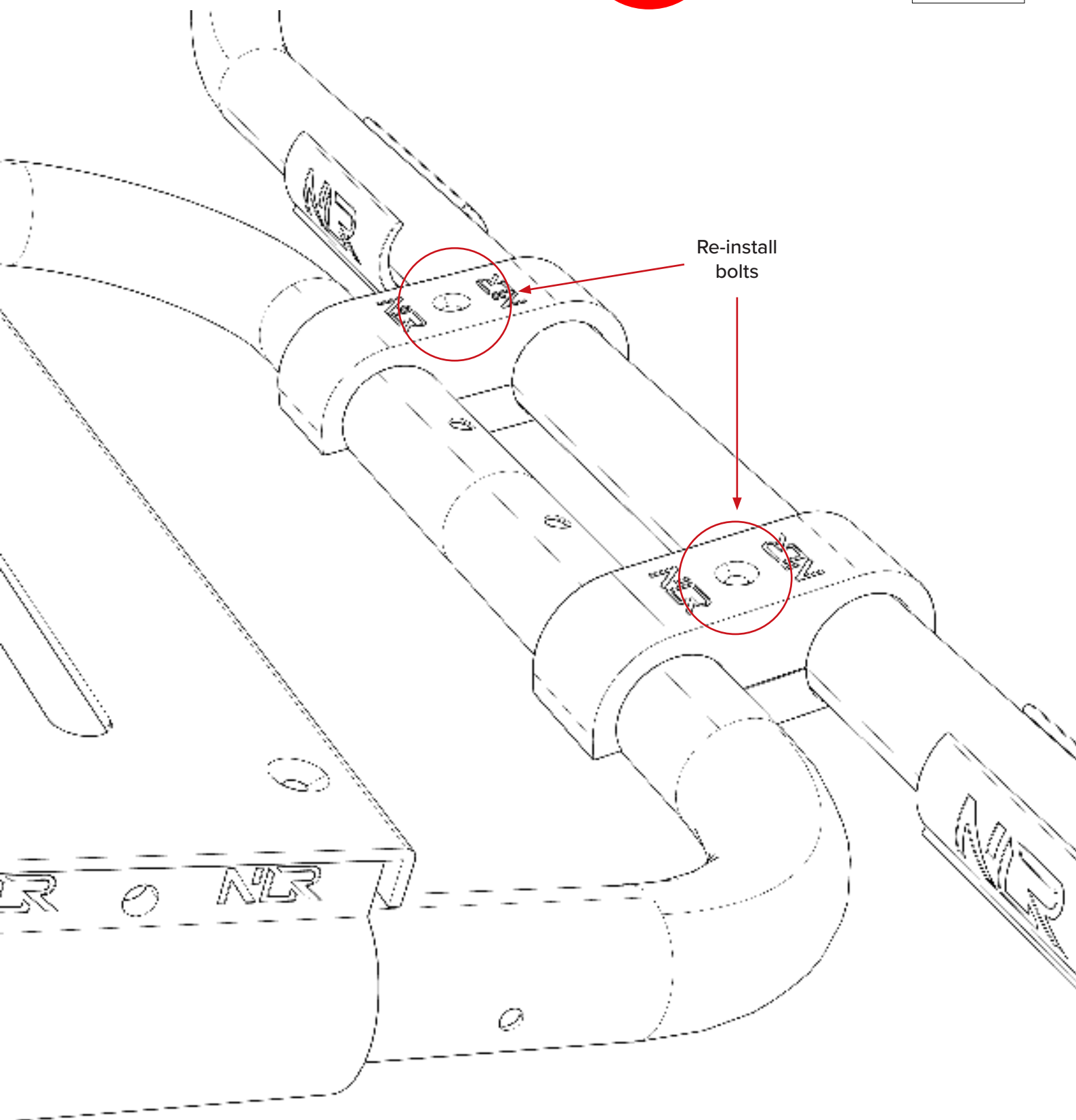


**2.1**

**URL:** [bit.ly/nlrbuild](https://bit.ly/nlrbuild)

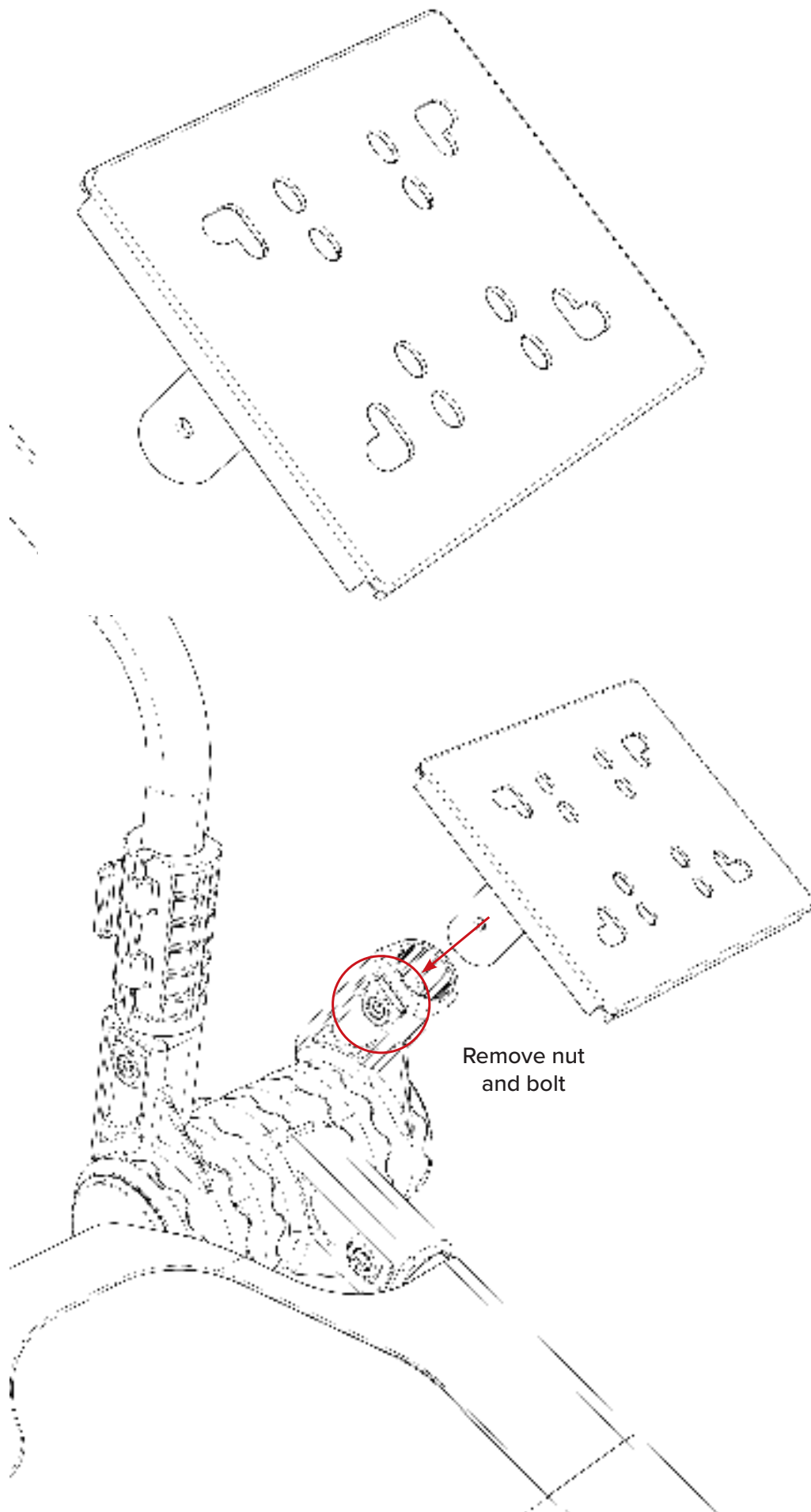


**CRITICAL  
ASSEMBLY  
VIDEO**



**For assistance please contact: [support@nextlevelracing.com](mailto:support@nextlevelracing.com)  
[www.nextlevelracing.com](http://www.nextlevelracing.com)**

### 3.0



### 3.1

**URL:** [bit.ly/nlrbuild](https://bit.ly/nlrbuild)

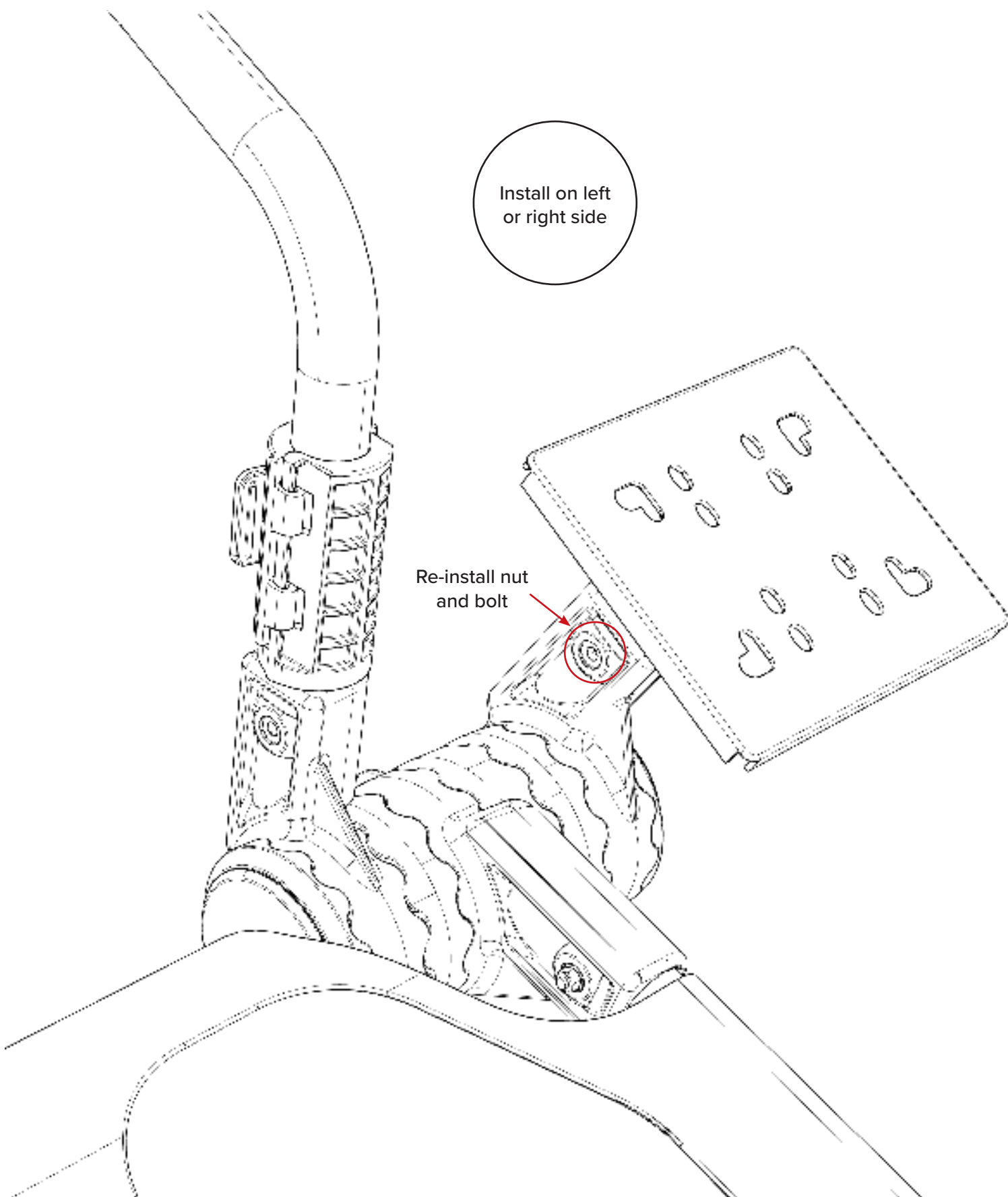


**CRITICAL  
ASSEMBLY  
VIDEO**



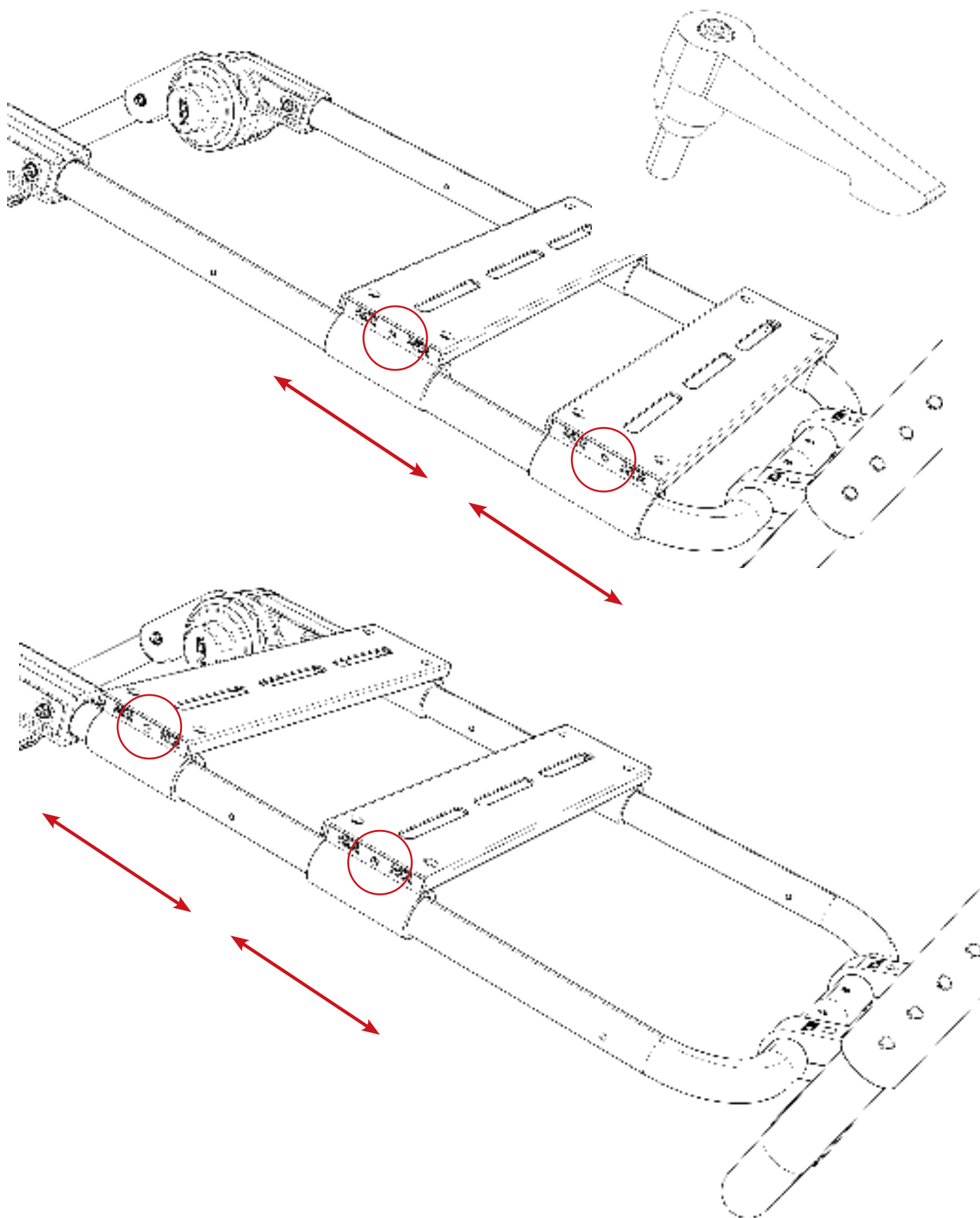
Install on left  
or right side

Re-install nut  
and bolt



**For assistance please contact: [support@nextlevelracing.com](mailto:support@nextlevelracing.com)  
[www.nextlevelracing.com](http://www.nextlevelracing.com)**

# ADJUSTMENTS

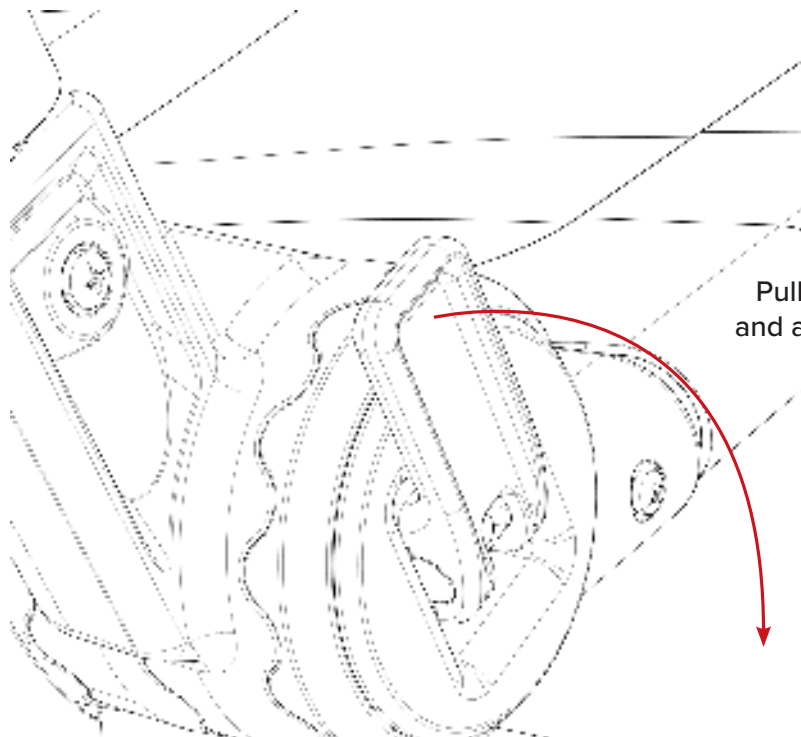


For assistance please contact: [support@nextlevelracing.com](mailto:support@nextlevelracing.com)  
[www.nextlevelracing.com](http://www.nextlevelracing.com)

**URL:** [bit.ly/nlrbuild](https://bit.ly/nlrbuild)



**CRITICAL  
ASSEMBLY  
VIDEO**



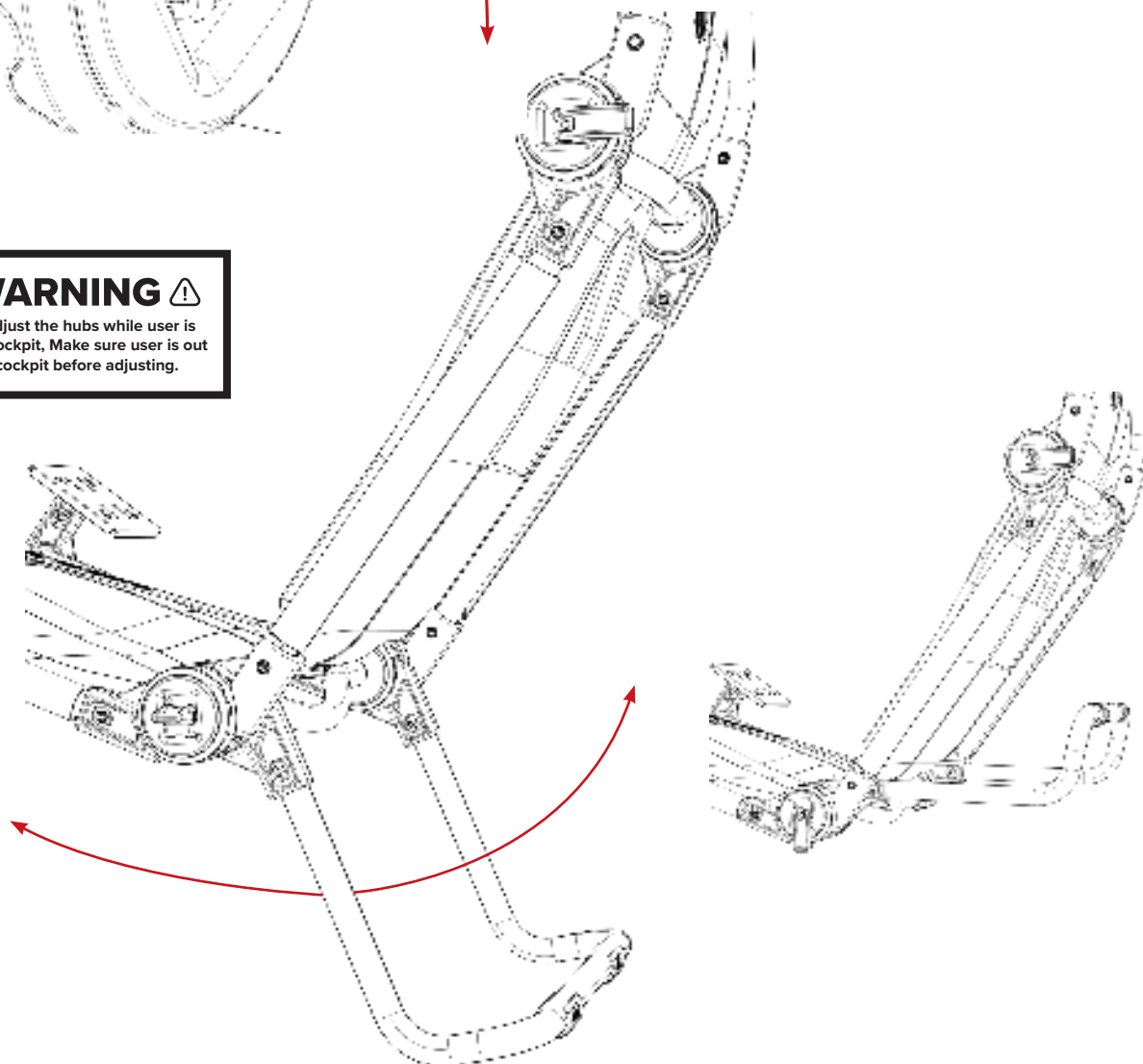
Pull to open  
and adjust seat

**⚠ WARNING ⚠**

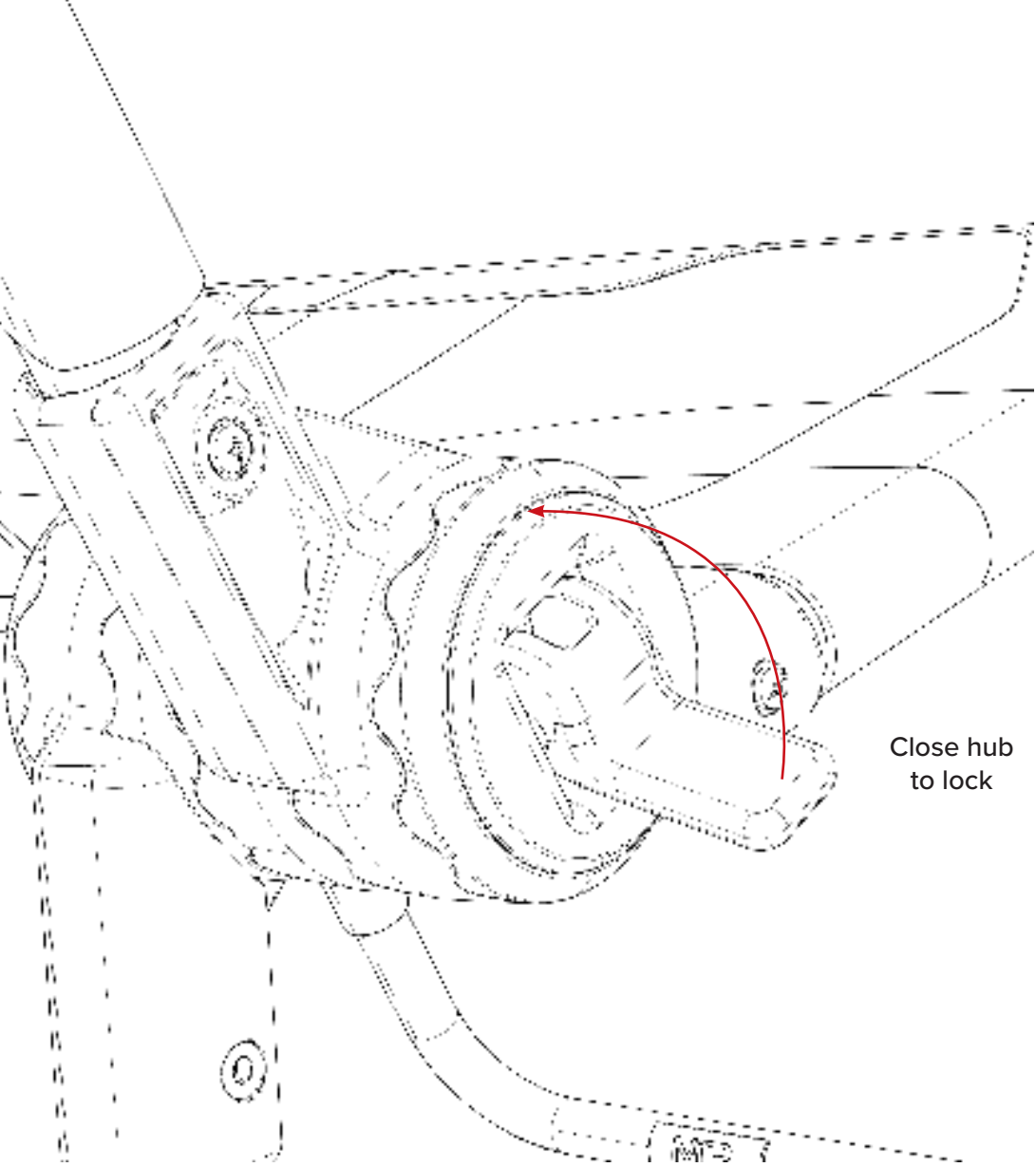
Make sure the hubs are tightened fully before using the cockpit. (spin the hub clockwise to ensure it is fully tight)

**⚠ WARNING ⚠**

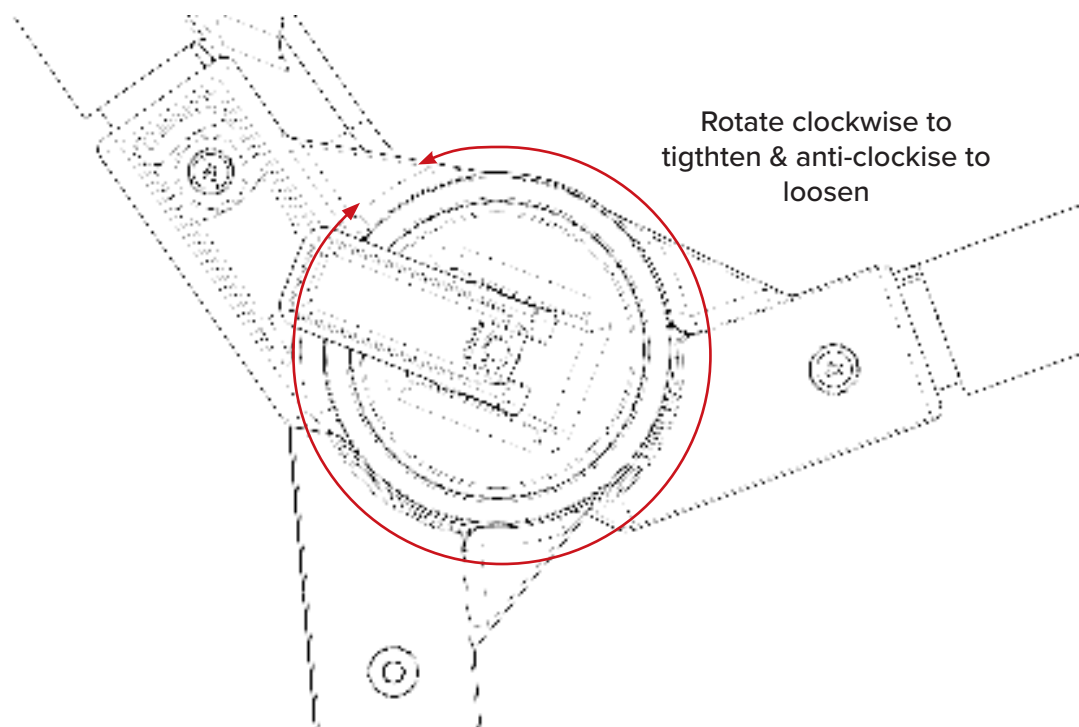
Do not adjust the hubs while user is sitting in cockpit, Make sure user is out of the cockpit before adjusting.



**For assistance please contact: [support@nextlevelracing.com](mailto:support@nextlevelracing.com)  
[www.nextlevelracing.com](http://www.nextlevelracing.com)**



Close hub  
to lock



Rotate clockwise to  
tighten & anti-clockwise to  
loosen

**URL:** [bit.ly/nlrbuild](https://bit.ly/nlrbuild)

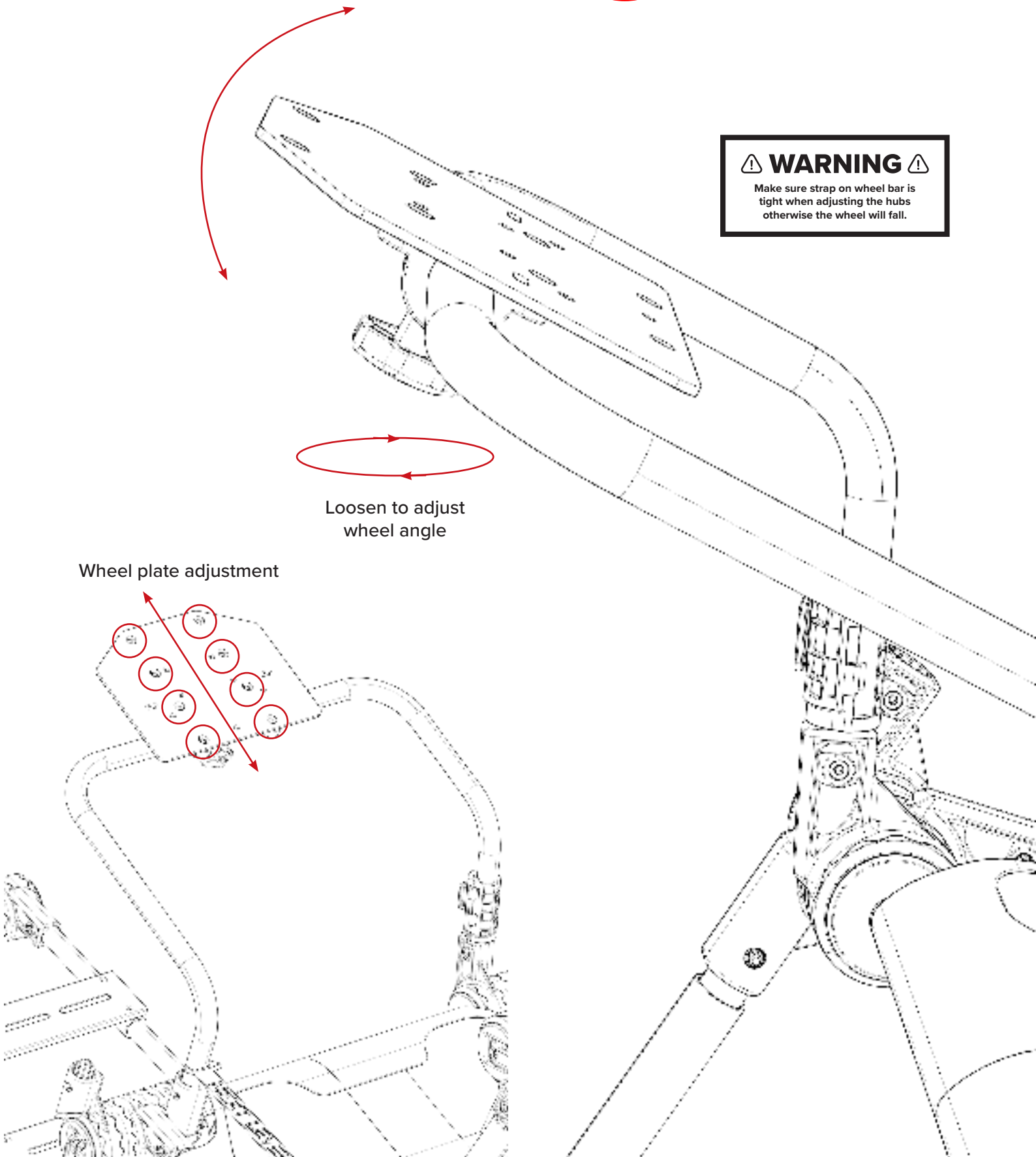


**CRITICAL  
ASSEMBLY  
VIDEO**



**⚠ WARNING ⚠**

Make sure strap on wheel bar is tight when adjusting the hubs otherwise the wheel will fall.



Loosen to adjust  
wheel angle

Wheel plate adjustment



# WARNING



- Please do not use power tools for assembly as over tightening can damage your frame.
- Do not adjust the hubs while user is sitting in cockpit. Make sure user is out of the cockpit before adjusting.
- Make sure the hubs are tightened fully before using the cockpit. (spin the hub clockwise to ensure it is fully tight)
- Make sure strap on wheel bar is tight when adjusting the hubs otherwise the wheel will fall.



## WARNING

**CHOKING HAZARD** - Small parts not for children under 3 years or any individuals who have a tendency to place inedible objects into their mouths

If you require any support with your product  
please contact our friendly team at:

**support@nextlevelracing.com** for a prompt response.



# NOTES

# NOTES

**URL:** [bit.ly/nlrbuild](https://bit.ly/nlrbuild)



**CRITICAL  
ASSEMBLY  
VIDEO**



## **NEED ASSISTANCE?**

### **ASSEMBLY VIDEO**



If you require any support with your product please  
contact our friendly team at:

**[support@nextlevelracing.com](mailto:support@nextlevelracing.com)** for a prompt response.



F-GT LITE

