

## COLOR-CHANGE

- Use an ice cube to see color change. Reverse the color change by applying a warm towel over the areas.
- Only the areas shown in this manual color change.
- Hair does not change color. Do not submerge in water or wet it when using the ice cube.
- If color change does not work properly or quickly, the temperature of the styling head may be too close to the temperature of the ice cube.
- Color change temperatures may vary according to weather conditions.

## IMPORTANT INFORMATION

- If the adhesive gets dirty, rinse with water. Avoid getting water on the hair.
- Air dry the adhesive.
- An adult must be present when children are playing with water.
- Do not wash hair with soap and water or subject it to very high heat in any manner, as it will irreparably damage the hair.
- If hair gets wet, use a dry towel to dry it off and allow it to air dry.
- Carefully remove the hair extensions.
- Do not store the styling head or its contents in direct sunlight for extended periods of time.
- Exposure to sunlight may deactivate color change feature.



SKU: 565963

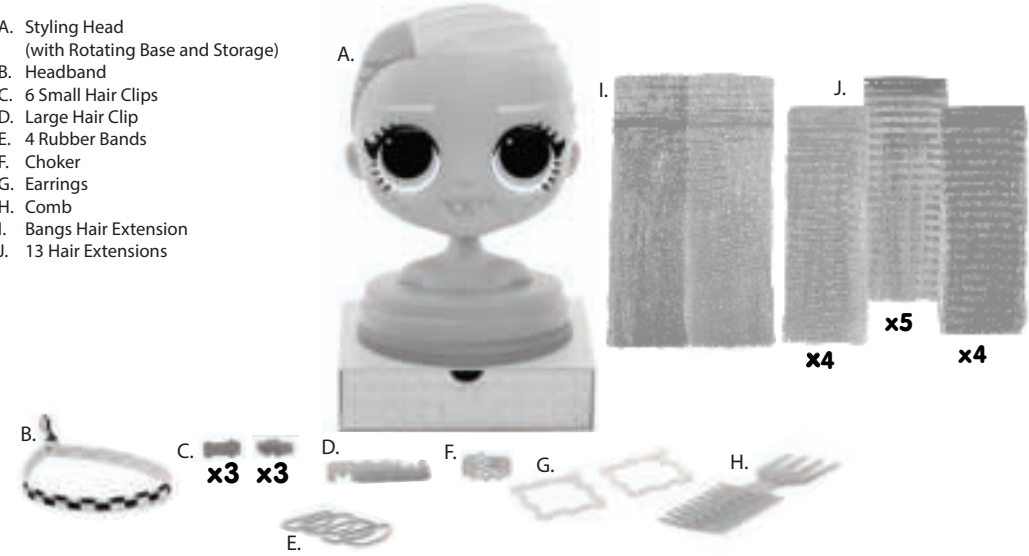
# NEONLICIOUS

AGES 3+  
ADULT SUPERVISION REQUIRED

**WARNING:**  
CHOKING HAZARD—Small parts.  
Not for children under 3 years.

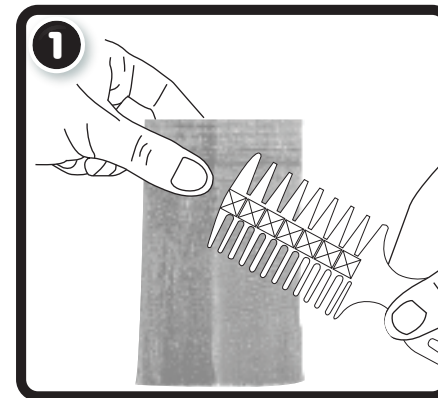
## CONTENTS

- A. Styling Head  
(with Rotating Base and Storage)
- B. Headband
- C. 6 Small Hair Clips
- D. Large Hair Clip
- E. 4 Rubber Bands
- F. Choker
- G. Earrings
- H. Comb
- I. Bangs Hair Extension
- J. 13 Hair Extensions



Illustrations are for reference only. Styles may vary from actual contents.

## QUICK START



Hold the extension from the adhesive side and brush the hair.



Peel off the wax paper on the bangs hair extension. Do not discard the wax paper.

Please keep this manual as it contains important information.



www.LOLsurprise.com  
©2020 MGA Entertainment, Inc.  
L.O.L. SURPRISE!™ and L.O.L. SURPRISE! O.M.G.™ are trademarks of MGA in the U.S. and other countries. All logos, names, characters, likenesses, images, slogans, and packaging appearance are the property of MGA.

The preferred method of contact for Customer Service is through our e-mail contact form at [www.mgae.com](http://www.mgae.com)

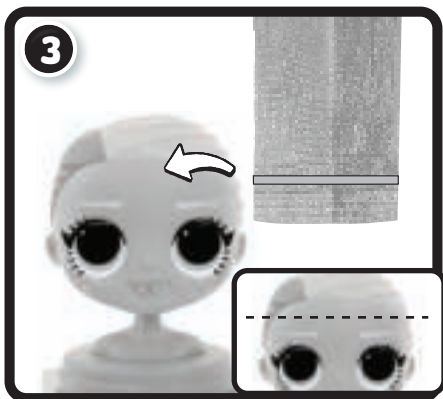
0919-0-E/INT  
Printed in China

**MGA Entertainment**  
9220 Winnetka Ave. Chatsworth, CA 91311 U.S.A.  
(800) 222-4685

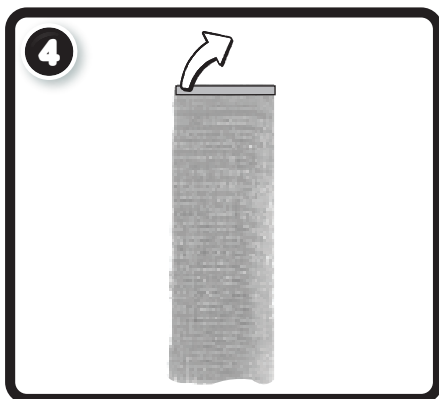
**MGA Entertainment UK Ltd.**  
50 Presley Way, Crownhill, Milton Keynes,  
MK8 0ES, Bucks, UK  
+ 0800 521 558

**MGA Entertainment (Netherlands) B.V.**  
Klipperaak 201, 2411 ND Bodegraven, NL  
Tel.: +31 (0) 172-758 038  
E-mail: [klantenservice@mgae.com](mailto:klantenservice@mgae.com)

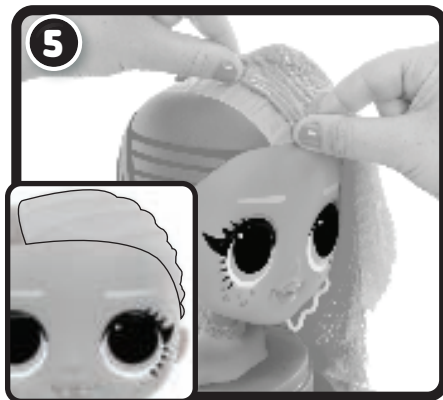
**Imported by MGA Entertainment Australia Pty Ltd**  
Suite 2.02, 32 Delhi Road  
Macquarie Park NSW 2113  
1300 059 676



Place the hair bangs extension between the head and forehead of the styling head. End of the bangs should be above the eyebrows.



Peel off the wax paper on the hair extensions. Do not discard the wax paper.



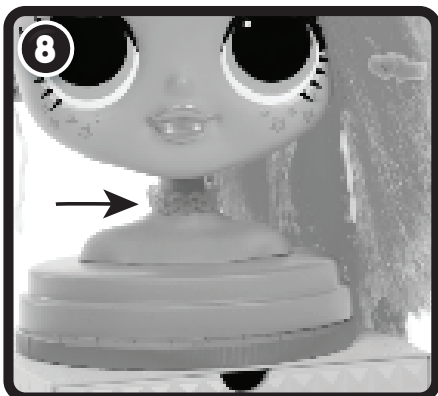
Place the hair extensions along the braided part of the styling head. The base rotates to help attach the extensions.



Create your own hairstyles by adding the headband, hair clip and barrettes.



Insert the earrings into the openings on the ear.



Add the necklace. Wrap around the styling head's neck and connect the ends.

## MANY WAYS TO STYLE!

Extensions can be removed and applied differently to create unique hairstyles.



## COLOR CHANGE FEATURES

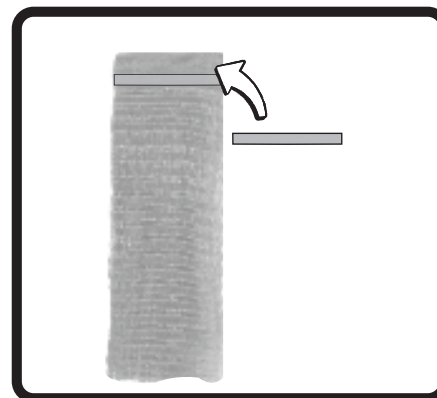
Before beginning, cover the play area to prevent possible water damage.

Wrap an ice cube in a paper towel (not included) and rub the ice cube over the eyebrows, eyelids and lips.

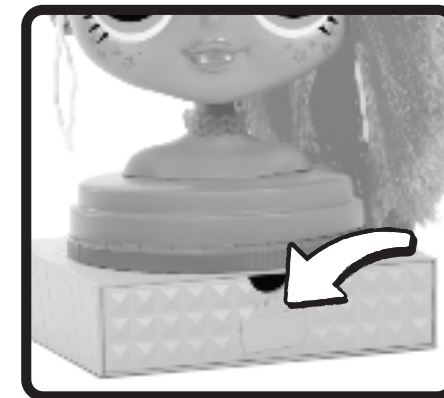
To return it to its original color, wet a towel with warm water and apply over the areas.



## STORING



Remove the hair extensions from the styling head and replace the wax paper over the adhesive. Store extensions back in the packaging box.



Store the accessories in the drawer.