



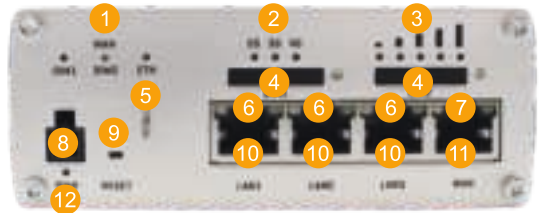
# RUTX09 LTE Router

Quick start guide v1.0



## Front view

- 1 WAN type LEDs
- 2 Mobile connection type LEDs
- 3 Mobile signal strength indication LEDs
- 4 SIM cards
- 5 SIM needle
- 6 LAN LEDs
- 7 WAN LED
- 8 Power socket
- 9 Reset button
- 10 LAN Ethernet ports
- 11 WAN Ethernet port
- 12 Power LED

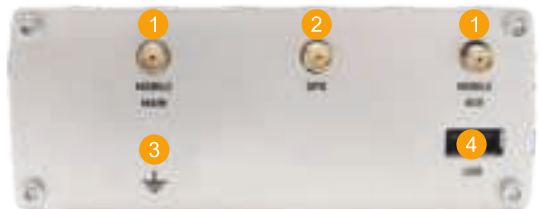


Power socket pinout		
No.	Description	Wire color
1	Power	Red
2	Ground	Black
3	Input	Green
4	Output	White



## Back view

- 1 Mobile antenna connectors
- 2 GPS antenna connector
- 3 Grounding screw
- 4 USB connector



## Hardware installation

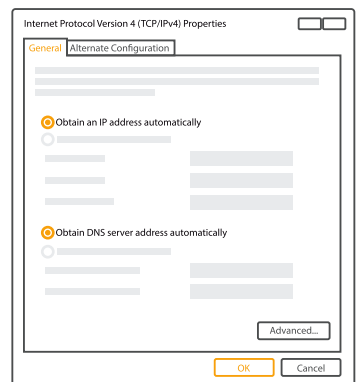
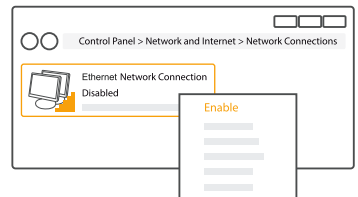
1. Pull out the SIM needle.
2. Push one of the SIM holder buttons with the SIM needle.
3. Pull out the SIM holder.
4. Insert your SIM card into the SIM holder.
5. Slide the SIM holder back into the router.



5. Attach LTE, GPS antennas.
6. Connect the power adapter to the socket on the front of the device. Then plug the other end of the power adapter into the power outlet.
7. Connect to the device using Ethernet cable and plug it in to any LAN Ethernet port.

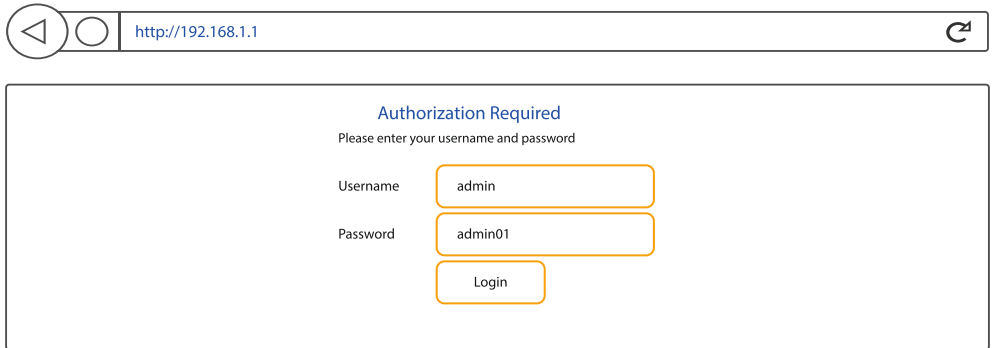
## Configure your computer (Windows)

1. Enable the Ethernet network connection (go to **Start > Control Panel > Network and Internet > Network and Sharing Center**. In the left panel click **Change adapter settings** link. Right click on **Ethernet Network Connection** and select **Enable**).
2. Setup Ethernet network adapter on your computer (right click on **Ethernet Network Connection** and select **Properties**. After that select **Internet Protocol Version 4 (TCP/IP)** and click **Properties**).
3. Select **Obtain IP address automatically** and **Obtain DNS server address automatically** if they are not selected. Click **OK**.



## Login to device

1. To enter routers Web interface type `http://192.168.1.1` in your internet browser.
2. Use the following parameters when prompted for authentication:



http://192.168.1.1


**Authorization Required**  
Please enter your username and password

Username

Password

3. [Configuration Wizard](#) will start after logging in. It is necessary to complete [Configuration Wizard](#) to setup router to correct mode.
4. Go to [Status > Network information](#) and pay attention to [Signal strength](#). To maximize the performance try adjusting antennas or changing location of your device to achieve best signal conditions.

## Login to device

Mobile	WAN	LAN	Wireless	OpenVPN
<b>Mobile Information</b>				
				
Data connection state	Connected			
IMEI	860461024004296			
Sim card state	OK			
Signal strength	-44 dBm			

## Safety information

RUTX09 router must be used in compliance with any and all applicable national and international laws and with any special restrictions regulating the utilization of the communication module in prescribed applications and environments.

Radio specifications	
RF technologies	UMTS/HSPA+, LTE-A, GNSS
Max RF power	24 dBm@WCDMA, 23 dBm@LTE
Bundled accessories specifications*	
Power	AC/DC power adapter 12 V 1.5 A, 4 pin plug
GSM/WCDMA/LTE antenna	698-960/1710-2690 MHz, 50 $\Omega$ , VSWR $\leq$ 3, gain** 3 dBi, omnidirectional, SMA male connector
GNSS antenna	1575.42-1602 MHz, 2.2-5 VDC, VSWR<1.5, active total gain** 28 dBi (typ.), RHCP polarization, SMA male connector

\* Order code dependent.

\*\* Higher gain antenna can be connected to compensate for cable attenuation when extension cable is used. The user is responsible for the compliance with the legal regulations.



This sign on the package means that it is necessary to read the Users Manual before you start using the device.



This sign on the package means that all used electronic and electric equipment should not be mixed with general household waste.



Hereby, Teltonika declares that the radio equipment type RUTX09 is in compliance with Directives: 2014/53/EU, 2014/35/EU, 2014/30/EU. The full text of the EU declaration of conformity is available at the following internet address: <http://teltonika.lt/product/rutx09/>