

Rowenta®

DA1500



www.rowenta.com

EN

DE

FR

NL

DA

NO

SV

FI

IT

ES

PT

EL

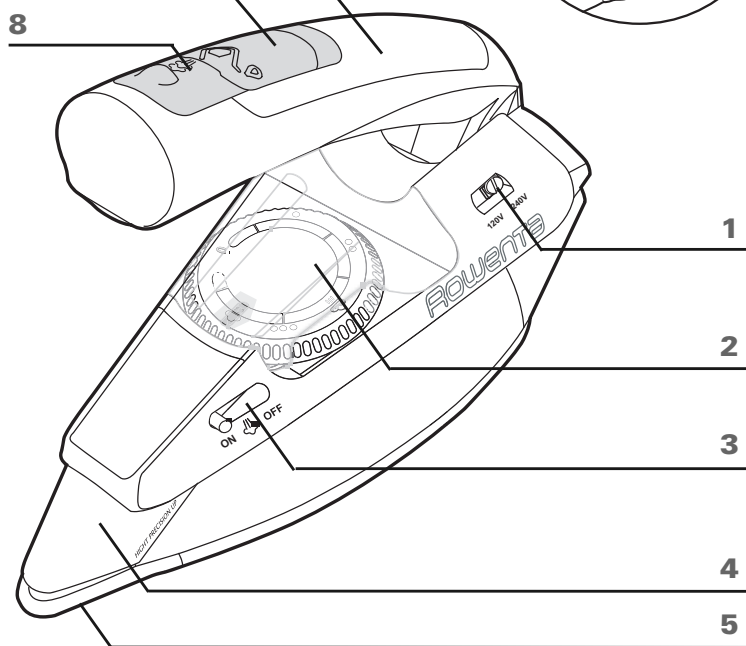
AR

9

6

7

8



1


2

3

4

5

SAFETY INSTRUCTIONS

- Please read these instructions carefully and keep them for further references.
- Never leave the appliance unattended when it is connected to a power source; if it has not cooled down for approximately 1 hour.
- The iron must be used and rested on a flat, stable, heat-resistant surface.
- When you place the iron on the iron rest, make sure that the surface on which you place it is stable.
- Always unplug your appliance: before filling, or rinsing the water tank, before cleaning it, after each use.
- Children must be supervised to ensure that they do not play with the appliance.
- Keep the iron and its cord out of reach of children less than 8 years of age when it is energized or cooling down.
- This appliance can be used by children aged from 8 years and above and persons with reduced physical, sensory or mental capabilities, or lack of experience and knowledge, if they have been given supervision or instruction concerning use of the appliance in a safe way and understand the hazards involved.
- Cleaning and user maintenance shall not be made by children without supervision.
- The appliance must not be used if it has fallen to the floor, shows evident of damage, leaks or fails to function correctly. Never dismantle you appliance. To avoid any danger, have it inspected in an approved service centre.
-  • The surfaces which are marked with this sign and the soleplate are very hot during the use of the appliances. Don't touch these surfaces before the iron is cooled down.
- The iron is not intended for regular use.

IMPORTANT RECOMMENDATIONS

- The voltage of your electrical installation must correspond to that of the iron (220-240V). Always plug your iron into an earth socket. Connecting to the wrong voltage may cause irreversible damage to the iron and will invalidate the guarantee.
- If you are using a mains extension lead, ensure that it is corrected rated (16A) with an earth, and is fully extended.
- If the electric power cord is damaged, it must be replaced by an Approved Service Centre in order to prevent any danger.
- Do not unplug your appliance by pulling on the cord.
- Never immerse your steam iron in water or any other liquid. Never hold it under the water tap.
- Never touch the electric cord with the soleplate of the iron.
- Your appliance gives off steam, which may cause burns, especially when you are ironing close to the edge of your ironing board.
- Never direct the steam towards people or animals.
- For your safety, this appliance conforms to the applicable standards and regulations (Low Voltage, Electromagnetic Compatibility, Environmental Directives).
- This product has been designed for domestic use only. Any commercial use, inappropriate use or failure to comply with the instructions, the manufacturer accepts no responsibility and the guarantee will not apply.



ENVIRONMENT PROTECTION FIRST !

- ① Your appliance contains valuable materials which can be recovered or recycled.
- ② Leave it at a local civic waste collection point.

Keep these instructions

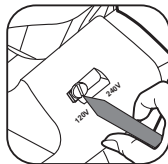
DESCRIPTION

- | | |
|---------------------------------|----------------------------|
| 1. Voltage selector (120/240 V) | 5. Microsteam200 soleplate |
| 2. Temperature control | 6. Handle water tank |
| 3. Steam switch | 7. Water filling inlet |
| 4. High precision tip | 8. Burst of steam button |
| | 9. Handle release |

BEFORE IRONING

Remove the sticker on the soleplate.
Adjust the voltage selector.

- Adjust the iron to correct voltage for your location, using a sharp object. If the voltage selected is 120 V, the iron will operate at 100 to 120 V. If it is set at 240 V, the iron will operate at 200 to 240 V.

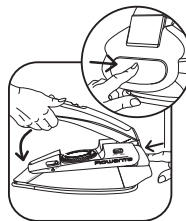
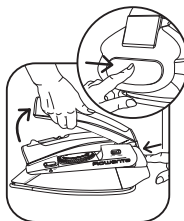


Note!

If necessary, check that you are using an adapter which meets the safety requirements of the country you are in.

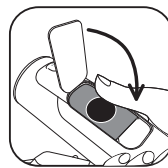
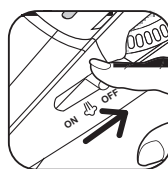
Put the handle into the ironing position.

- Press the release button on the rear side and raise the handle until it locks into position.
- For storing proceed in the same way to close the handle.



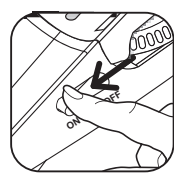
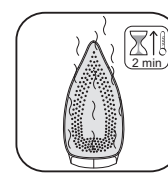
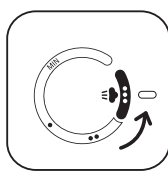
STEAM IRONING

Filling the water tank.



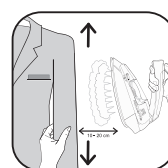
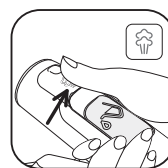
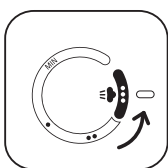
Your iron has been designed to operate using untreated tap water.

Setting the temperature.



Note !
Your iron will only produce steam when the control is set within the coloured zone.

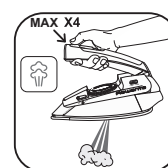
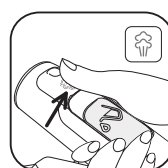
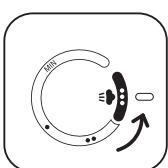
USING BURST OF STEAM AND VERTICAL STEAM



To remove creases vertically.

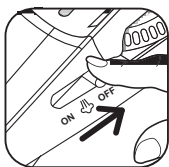
Hold the iron a few centimeters away from the garment to avoid burning delicate fabrics.

IMPORTANT Never direct the steam at people or animals !




To remove difficult creases.

Steam ironing	Steam control set to  ON OFF	Temperature set to ...	Cotton Linen	Burst of steam
----------------------	--	----------------------------------	---------------------	-----------------------



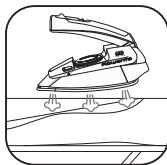
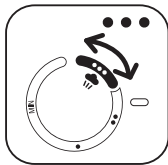
DRY IRONING

<p>Dry ironing</p>	<p>Steam control set to</p> 	<p>Temperature set to</p> <p>·</p> <p>··</p> <p>···</p>	<p>Silk, Synthetics Wool</p>	<p>Burst of steam Temperature at setting</p> <p>···</p>
---------------------------	--	--	---	--

Our advice :

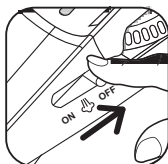
With the iron in DRY mode, start by ironing fabrics at a low temperature (·) before moving on to those requiring a higher temperature (···).

If you turn the temperature control down, wait for approximately one minute before ironing again. If you are ironing fabrics made from mixed fibres : set the iron temperature to the correct level for the most delicate fibre.



MAINTENANCE AND STORING OF YOUR IRON

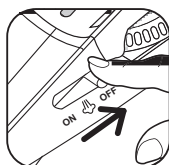
Cleaning your iron.



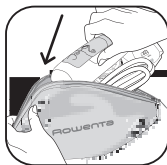
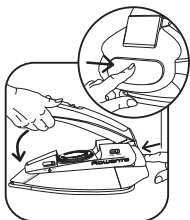
Note ! Make sure the iron is cold before storing it.
Do not use any cleaning or descaling products.

IMPORTANT Do not wind the cord around the hot soleplate.
Never store your iron placed down on the soleplate.

Storing your iron.



EN



Problems and possible causes	Solutions
Your iron produces little or no steam	
<ul style="list-style-type: none"> • The temperature selected is too low. • The steam control is set on OFF. • There is no water in the tank. 	<p>Set the temperature control on *** Switch the steam control to ON. Fill the water tank.</p>
Water is dripping from the holes in the soleplate	
<ul style="list-style-type: none"> • You have been using the burst of steam button too often. • Steam is used before the iron is hot enough. • The iron is stored with water in the tank. 	<p>Wait a few seconds between each shot.</p> <p>Set the thermostat within the coloured steam zone and wait until the iron is hot (approx. 2 min.).</p> <p>Empty the tank before storing the iron and set the steam control to OFF.</p>
<ul style="list-style-type: none"> • The problem persists. 	<p>Take your iron to an Approved Service Centre.</p>

HELPLINE:

if you have any product problems or queries, please contact our Customer Relations Team first for expert help and advice:

0845 602 1454 - UK

(01) 677 4003 - Ireland

or consult our website - www.rowenta.co.uk

