

BoomX-D MI

2.4G Digital Dual-Channel Wireless Microphone



Made for

 iPhone | iPad | iPod

User Manual

Foreword

Thanks for purchasing COMICA BoomX-D MI 2.4G Digital Dual-Channel Wireless Microphone.
To ensure bring you a good using experience, please read this manual book carefully before using and correctly install and operate.

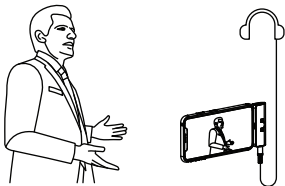
Main Features

- . 2.4G Digital Wireless, Global Free Frequency
- . Dual-Channel 2.4G Wireless Microphone
- . Visual Power, Audio Dynamic Monitor and Other Display Functions
- . Internal and External MIC Two Input Modes
- . Real-time Audio Monitor
- . Broadcasting Quality Audio
- . RF Technology, Auto Freq. Adjustment, Stable Transmission
- . Low Latency < 20ms
- . Working Range Up to 50m
- . Designed with Multi-functional Belt Clip and Compact

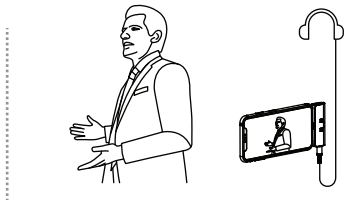
Notice

- ⚠ Due to 2.4G wireless characteristics, please keep face to face when use it, and don't turn your back to the receiver, otherwise it is easy to generate breakpoints, which is a normal phenomenon
- ⚠ Don't block the antenna position to avoid any poor signal generated
- ⚠ When using the playback recording function with devices of iOS system, it can not achieve it due to the protection of the iOS system if the volume of the device is adjusted to the maximum before monitoring, you need to readjust the volume of the device to realize playback recording (It is recommended that the headphone volume is not adjusted to the maximum)
- ⚠ When using on mobile phone, please turn off WIFI and Bluetooth to avoid 2.4G wireless interference
- ⚠ This product belongs to high-precision instruments, please avoid falling, collision or pounding
- ⚠ Do not use this equipment in the vicinity of heat source or interference source, such as radiator, oven, refrigerator or air conditioner, smartphone or next to the WIFI AP
- ⚠ If the pick-up distance is close or when used outdoors, please put on the wind muff to prevent sound burst or reduce wind noise
- ⚠ Do not use the equipment in rain or in a damp environment to avoid short-circuit danger
- ⚠ Please keep the product in a dry environment

Please keep face to face when use it, and don't turn your back to the receiver, otherwise it is easy to generate breakpoints.

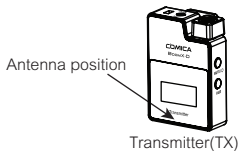


Face to receiver (correct)

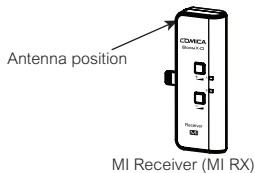


Back to receiver (incorrect)

Don't block the antenna position to avoid any poor signal generated.



Transmitter(TX)



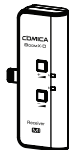
MI Receiver (MI RX)

Packing List

Main Parts:



Transmitter(TX)



MI Receiver (MI RX)

Multiple Selections:



MI1 = TX + MI RX



MI2 = TX + TX + MI RX

Accessories:

- ① 3.5mm Mic Audio Input Cable
- ② Wind Muff
- ③ USB A-USB C Charging Cable
- ④ Reset Pin
- ⑤ User Manual
- ⑥ Warranty Card



①



②



③



④



⑤



⑥

The accessories of each combination include:

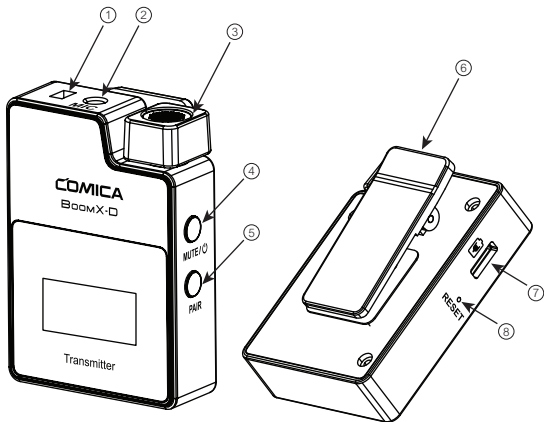
$$\text{MI1} = \text{①} + \text{②} + \text{③} + \text{④} + \text{⑤} + \text{⑥}$$

$$\text{MI2} = \text{①} \times 2 + \text{②} \times 2 + \text{③} + \text{④} + \text{⑤} + \text{⑥}$$

Components and Instruction

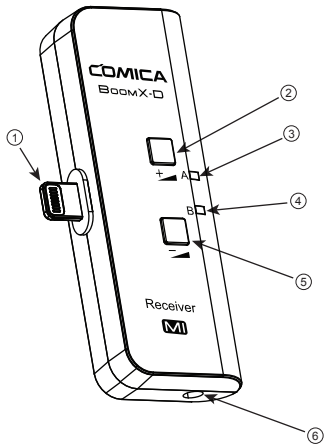
Transmitter (TX)

1. External Mic Locking Buckle
2. 3.5mm TRS Port of External Mic
3. Internal Mic
4. Power/Muting Button
5. Pair Button
6. Belt Clip
7. USB-C Charging Port
8. Reset Hole



MI Receiver (MI RX)

1. Lightning Connector
2. Output Volume Adjustment Button+
3. Group A Working Status Indicator
4. Group B Working Status Indicator
5. Output Volume Adjustment Button-
6. 3.5mm TRS/TRRS Monitoring Port

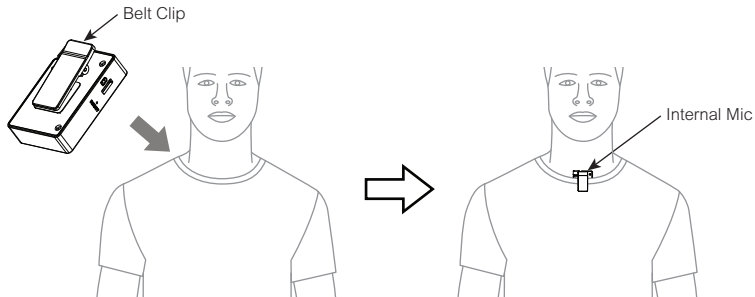


Installation

Transmitter (TX)

1. Use internal microphone :

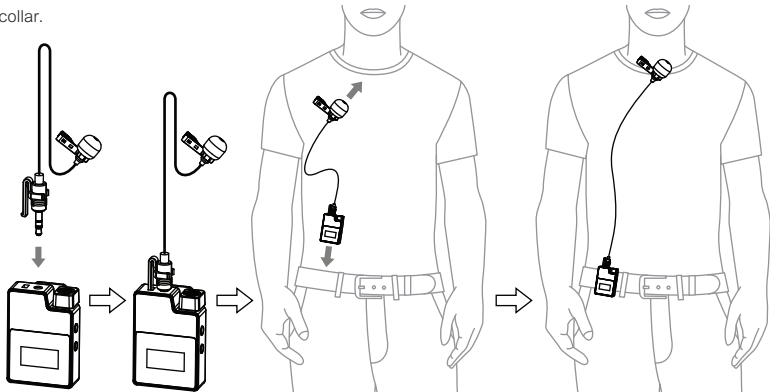
Install the transmitter on the collar through the belt clip so that the internal microphone points in the direction of the sound source.



👉 For better concealment during use, it is recommended that the belt clip be fixed and used outwards.

2. Use external microphone:

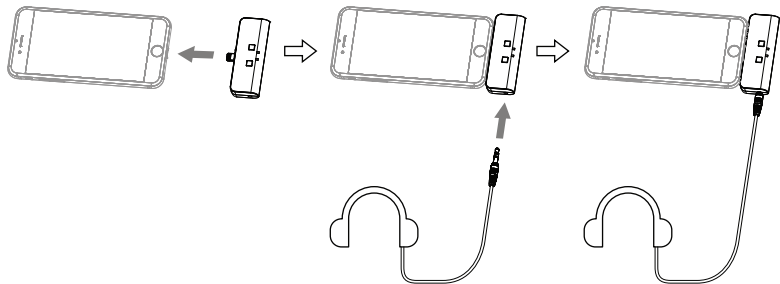
Insert the 3.5mm TRS microphone input cable into the transmitter's 3.5mm TRS external microphone port and tighten it, then clip the transmitter to the belt through the belt clip and clip the lavalier microphone to your collar.



When using an external microphone, the internal microphone is automatically turned off.

MI Receiver (MI RX)

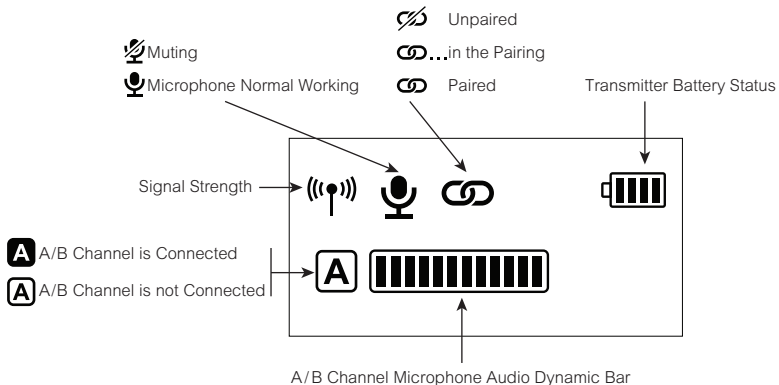
Insert the MI receiver (MI RX) into the Lightning interface of the phone; Insert the headphone into the 3.5mm TRS/TRRS monitoring port for monitoring.



Function and Usage

Transmitter (TX)

1. Screen Display Instruction:



2.Function Introduction:

2.1. Power/Muting Button

Long press for On/Off; Short press for muting switch(Muting switch is available only when the screen is on, if the screen is dimmed, press any button to light up the screen then switch the mute).



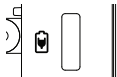
2.2. Pair Button

Long press for pairing with receiver (Pairing switch is available only when the screen is on, if the screen is dimmed, press any button to light up the screen then pairing).



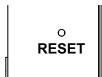
2.3. USB-C Charging Port

Connect the transmitter with the power through the USB A-USB C charging cable to charge.



2.4. Reset Hole

If there is an abnormal phenomenon such as the device is crash or unable to turn on it, then insert the reset pin into the reset hole to reset it.



2.5. 3.5mm TRS Microphone Port

Insert the 3.5mm TRS microphone input cable, and you can use the external lavalier microphone for recording. At this time, the internal microphone of this device is turned off.



MI Receiver (MI RX)

Function Introduction:

1. Lightning Connector

Insert into the Lightning interface of phone to use.



2. Output Volume Adjustment Button

Short press to adjust the output volume (6 levels), and A/B channel is synchronized.



3. A/B Working Status Indicator

The indicator is red when unpaired. After paired, the indicator is blue.

A

B

4. 3.5mm TRS/TRRS Monitoring Port

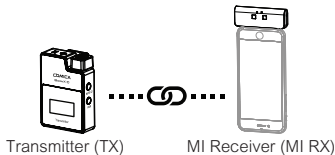
Insert headphone to monitor.



Pairing Method

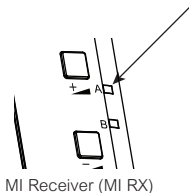
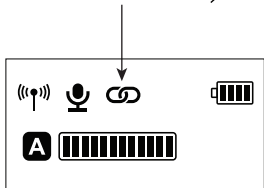
(All have been paired at the factory. If you need to re-pair, please follow the description)

The transmitter (TX) is pairing with MI Receiver (MI RX)



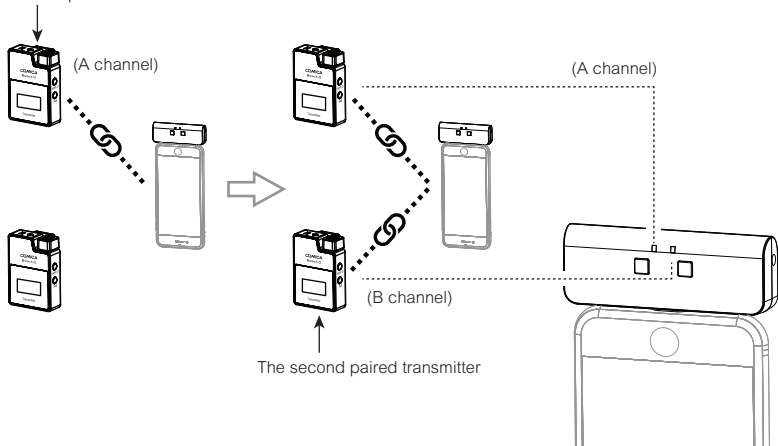
The screen icon changes from  to  after pairing

The channel indicator on the MI receiver (MI RX) changes from red to blue



Two transmitters (TX) are pairing with MI Receiver (MI RX)

The first paired transmitter



Specification

Transmitter (TX)

Wireless Band	2400 ~ 2483.5MHz
Transmitting Power	+10dBm
Receiving Sensitivity	-86dBm
Antenna	PCB Antenna
Polar Pattern	Omnidirectional
Frequency Response	80Hz ~ 20kHz
Sound Delay	<20ms
External Mic Input Interface	3.5mm TRS
Battery	Built-in Li-ion Battery 300mAh 3.7V
Battery Life	5 Hours
Net Weight	29g
Dimension	39 x 22 x 55mm
Operating Temperature	0°C ~ 50°C

MI Receiver (MI RX)

Wireless Band	2400 ~ 2483.5MHz
Transmitting Power	+10dBm
Receiving Sensitivity	-86dBm
Antenna	PCB Antenna
Volume Levels	6 Levels (3dB/Level)
Sound Delay	<20ms
Data Interface	Lightning
Monitoring Interface	3.5mm TRS/TRRS
Net Weight	19g
Dimension	33 x 13 x 70mm
Operating Temperature	0°C ~ 50°C

MI接收器 (MI RX)

把MI接收器 (MI RX) 插入手机的Lightning接口；把耳机插入3.5mm TRS/TRRS耳机监听插孔进行监听。

