

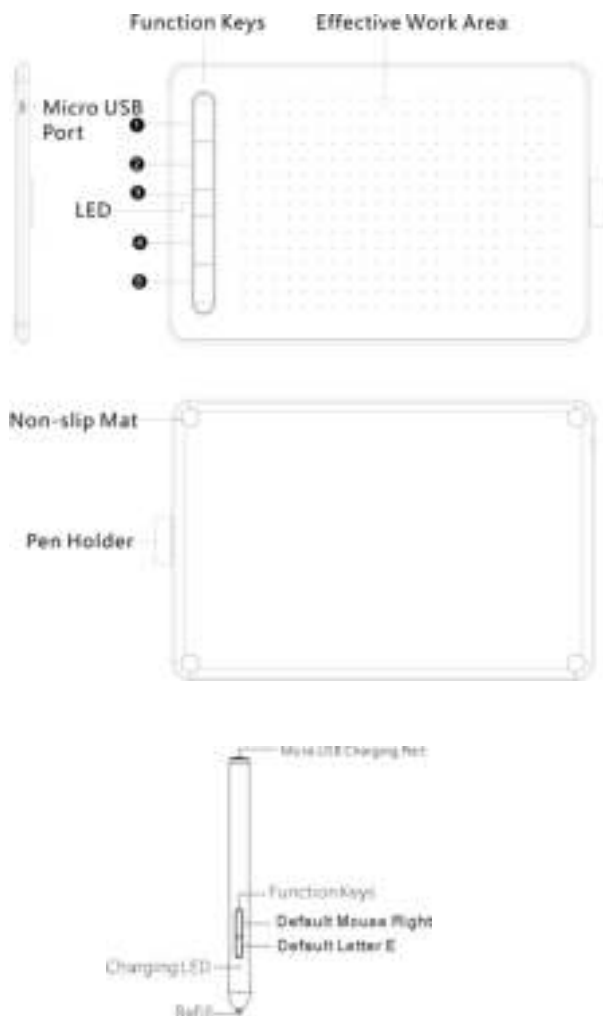
# **Graphics Tablet**

## **Quick Guide**

( Ver.1.1 )

## ■ Product Function

This product has the function of handwriting input and pressure induction, with teaching software, it can be applicable online teaching; It is also applicable to drawing software. The handwriting will change in thickness or thickness or thickness with the control of the pressure applied by the digital pen. It simulates the strokes of pencils, markers, watercolors, brushes and oil brushes .Also applicable to mobile phone or PC tablet drawing software.

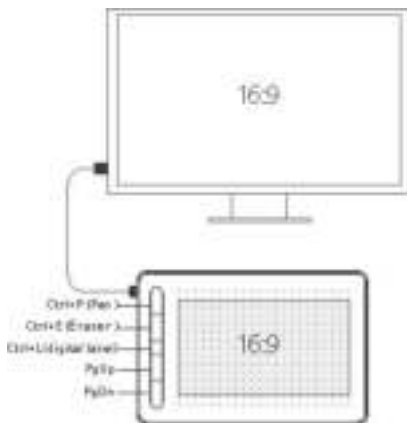


### Note

- This description is for reference only, the final actual function is subject to the actual function of the product actually ordered and received by the customer.
- The picture is for reference only. We reserve the right to improve and change the appearance and design of our products without prior notice.

## ■ Windows Driver-free Online Teaching

It is suitable for Windows 10 and part of Windows 7, no need to install the Graphics Tablet Driver. , it can be used with teaching software, directly connect to the computer with USB data cable. For example, support Microsoft Office PowerPoint full screen play Ctrl+P (Pen), Ctrl+E (Eraser), Ctrl+L (Digital Laser) and page up and down function.



- PowerPoint full screen play and Digital laser only supports PowerPoint 2013 and above.

## ■ Graphics Tablet Driver Quick Guide

### 1. How to download and install the Driver

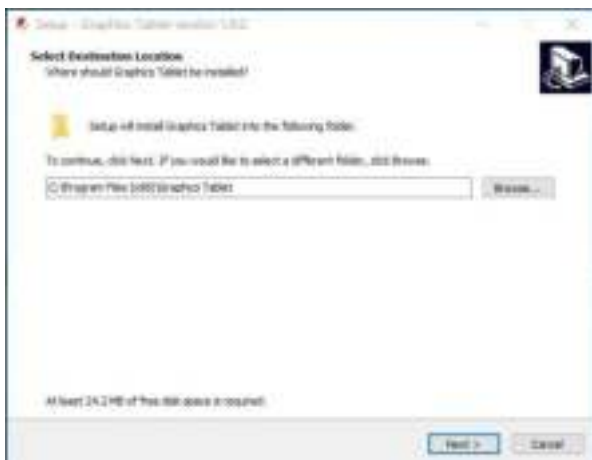
Download the driver of graphics tablet through the link below:

<http://download.myvsoncloud.com>



#### (1) Windows installation:

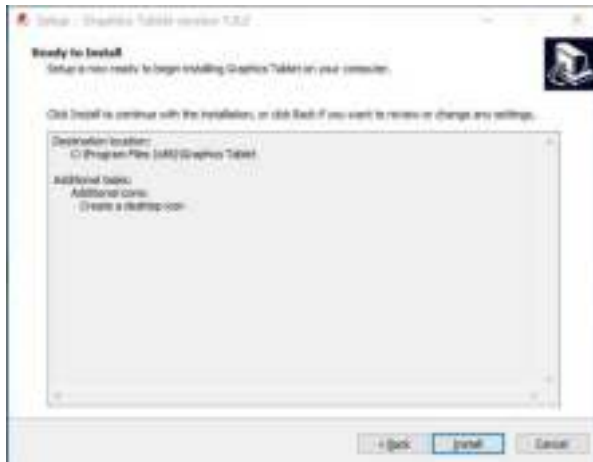
- 1) Please make sure that there is no driver of other brand of graphic tablet in your computer.
- 2) Close all painting software and anti-virus software before installation.
- 3) Double-click to run the driver, and click next step in turn according to the prompt.
  - a. Click "Next"



b. Click "Next"



c. Click "Next"



d. Click “Finish”



4) Restart the computer after the driver installed.

## (2) Mac installation:

1) Double-click to run the driver in your download file, and click next step in turn according to the prompt. Then Go -Applications here is Graphics Tablet Driver.

a. Click “Continue”



b. Click "Continue"



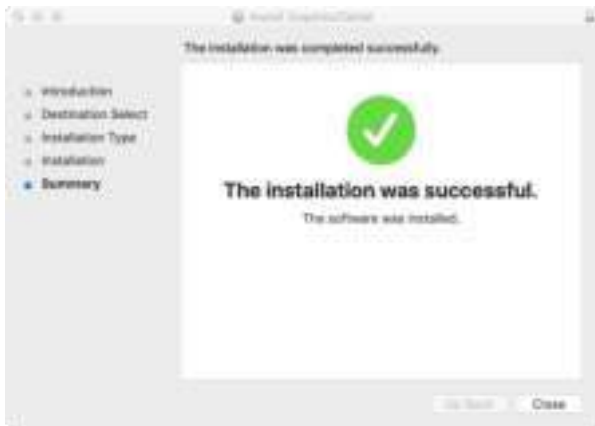
c. Click "Install"



d. Enter your Password, and then click the "Install Software"



e. Click "Close"



2) Please check the System Preferences – Security & Privacy – Privacy, and allow Graphics Tablet to control your computer.



**Note:**

- Please uninstall the driver of other brand of graphic tablet and restart the computer before install the driver of ours.
- Just install the driver with the guidance of default prompt. Don't change any settings, or there will be something wrong in running.
- During the process of installation, it may be blocked by the firewall for a few times. Please choose "install this program software" to continue.

## 2. How to connect

- 1) Connect the tablet and computer with the cable included.
- 2) The icon in taskbar will become colorful from gray when the connection established. The driver interface displays 'The graphics tablet is connected'. The indicator of the tablet is light yellow.
- 3) Then the graphics tablet can be used.

**Note:**

- Be sure to connect the graphics tablet to the computer after the driver is installed, so as to avoid driver installation delays or errors during the identification of the hardware.
- If the device does not respond, try to restart the device by inserting a pin into the RESET hole for about 3 seconds.
- If desktop computer, the digital board should be plugged into the USB port at the back of the case, not the USB port at the front of the case.
- If you have installed other graphics tablet on the computer, you must first uninstall the driver, restart the computer, and then install the driver of the graphics tablet, otherwise there will be conflicts.

## LED Indicator Light

The LED indicator light on the graphics tablet can indicate the running state, as follows:

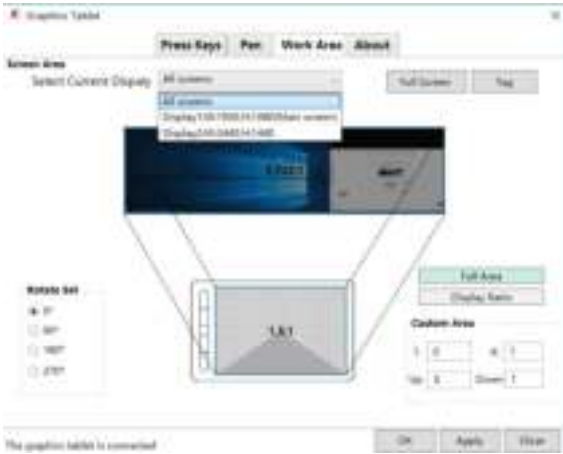
- When the graphics tablet is connected to the computer, the LED indicator is always half yellow light.
- When the pen is detected in the work area or the pen button is pressed, the LED indicator is highlighted in yellow.
- When the pen presses the graphics tablet or presses the pen button in the working area, the LED indicator will be on until the pen leave or releases the button.
- As the pen moves around the available work area of the tablet, the screen cursor will move in accordance with the position of the pen; if exceeding effective work area, it works invalid.



### 3. Settings in Windows

The operation procedure in Mac is similar to that in Windows.

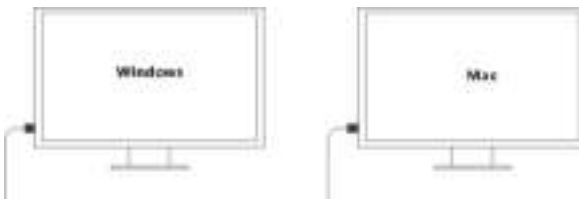
#### (1) Work Area Settings



- Work area is the effective working area of handwriting on the tablet which corresponds to the mouse cursor working area on the monitor of computer.
- If there are more than one monitors, it will can reflect on each monitor in mirror mode.
- You need select the monitor you want to display with tablet in extend mode.
- Display Ratio: It means the effective handwriting area on the tablet is in same ratio with the monitor. But some area on the tablet may out of work. If you draw a circle in working area, it will display a circle on the monitor.
- Full Area: It means total work area on the tablet can work. But if the ratios are different between monitor and tablet, it may display a oval when you draw a circle on the tablet.
- Rotate Set : You can set the way to place the tablet according to your personal habit.

#### (2) Press Keys Settings

- Default Hotkeys: Windows and Mac default hotkeys are different, as shown in the figure below. Press the button on the tablet and the computer displays the shortcut value. You can also view the default hotkeys of the hardware key by placing the cursor on the key or clicking the key icon.



**1) Customize the function of shortcut keys**

● Click one key to enter the “Hotkeys” window as below. Set its function or select one as you want. Then click “Ok” to save the setting.

**eg: Ctrl+P is Pen function in PowerPoint full screen play.**

**If need to set “Win+” to “Ctrl+P” , please follow the below step.**

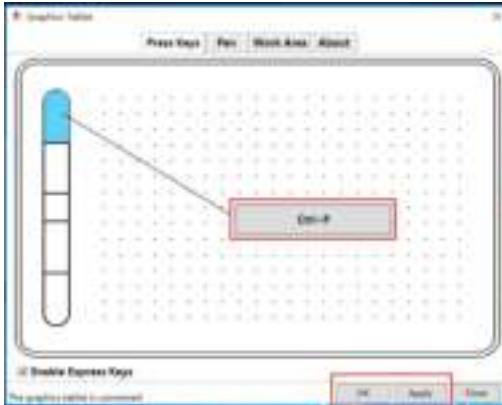
**a.Click “Win+” and enter the hotkey setting interface, it defaults Win**



**b.Select “Ctrl” and input the letter “P” , and then click “OK”**

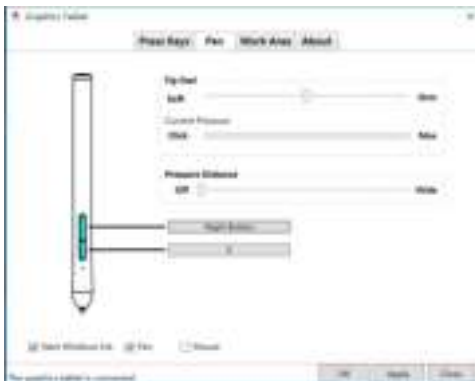


**c. Then click “OK” or “Apply” to take effect the hotkeys.**



- Switch: It can help you to switch frame among multiple monitors.
- Shell: Add a application program in it. You can run the application quickly by pressing the shortcut key.

### (3) Pen Settings



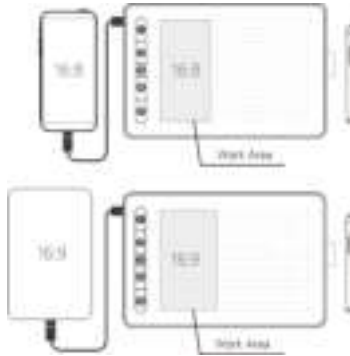
- The default function of the first button of the pen is letter” E” , the function of second is the right button of mouse. You can customize their function.
- Under pen mode, The mouse cursor’ s location on the screen is the position of the pen. It will move with the pen moving on the working area on the tablet. This is the default setting.

- Under mouse mode, the pen can be used as the mouse.
- Tip Feel: Adjust the pressure sensitive between the pen and tablet.
- Current Pressure: Test the pen pressure value.
- Pressure Distance: Adjust the sensitive distance between the pen and tablet. It's easier to double click with wide distance.
- Start Windows Ink: This function is used with drawing or office software. Such as Adobe Photoshop, Sketchbook, Microsoft Office, etc.

#### (4) About

- Import/Export: You can import or export your settings. Convenient for you to set the product with different software.
- Default setting: Back to the original settings.

### ■ Phone/Tablet Quick Guide



- Tablet can be used with mobile phone or PC tablet without installing driver.
- Please use the portrait screen for mobile phones and PC tablets, and place the tablet horizontally.
- Some models need to go to the Settings of mobile phone/ PC tablet — turn on the OTG function
- Please select the appropriate OTG adapter according to the type of interface of your phone/PC tablet. Connect one end of the OTG to the USB cable, and insert the other end into the phone interface. The left half of the digital board will automatically correspond to the proportion of the phone or PC tablet.

### ■ Manual Setting of Tablet

The default is the automatic mode, automatically identify the phone or PC (phone 16:8, PC 16:9); only the screen scale is not correct, iPhone mode, recognition errors need to be manually set.

Drawing software in computer or mobile tablet, the display screen is proportional to the map area of tablet, and drawing a circle on the tablet will create a circle on the screen, drawing a circle on the tablet may create an ellipse on the screen if the scale is not equal,

so the user manually sets the scale mode according to the actual size of the screen.

**Note:**

- Manual Settings only for driver-free scenarios (no Graphics Tablet Driver installed)
- Manual setting modes in the computer and phone must be without starting Graphics Tablet Driver.
- After connecting to Graphics Tablet Driver, manual setting modes such as mobile phone and computer will not take effect, and the screen proportion will be set by the driver software.

**1) Android phone -> tablet -> automatic mode adjustment**

Android users can adjust the proportional mode according to the size of their phone and tablet screen, as follows:

- A. Hold the 3rd and 5th keys 3S, and release the button when the red light is on, it is phone 16:8 mode
- B. Continue to hold 1S till green light and release the button, it is phone 16:9 mode (for android tablet)
- C. Continue to hold 1S and release the button after the red light is on, automatic mode adjustment (automatically identify phone 16:8; PC 16:9 )

**2) Computer ->iPhone/iPad**

Users need to correctly select the screen proportion mode according to their own display proportion. The method is as follows:

- A. Hold the 2nd and 4th keys 3S, release the button when the red light is on, it is computer 16:9 mode;
- B. Continue to hold 1S till green light and release the button, it is computer 16:10 mode
- C. Continue to hold 1S and release the button after the red light is on; it is iPhone and iPad modes (mouse function)

**■ Pen**

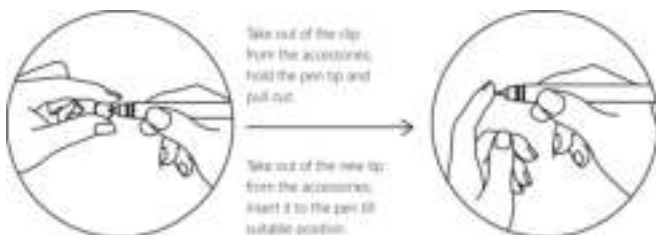
**Sleep and Awake**

If out-of use about 5-7 minutes, the pen will go asleep. You can draw again to awake it.

**Charge**

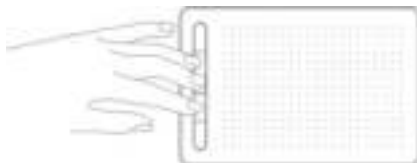
Unplug the silicon USB cover and then connect one end of USB cable to the pen charging port, the other end to PC. When charging, the red indicator light is on; if complete charged the indicator light goes off.

**Replace the refill**

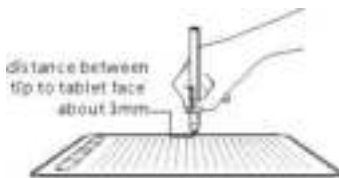


## Calibration Guide

- 1) When the tablet is connected to PC, use the pen tip touch the tablet screen to make sure the pen is working;
- 2) Hold the middle three buttons on the table at the same time until the red indicator light highlights. Loosen the button, the pen entering calibration status;



- 3) Put the pen tip near the tablet screen as close as possible but not touch the surface of screen;



- 4) If the red high light turns green once, it means the calibration is successful;
- 5) If the red highlight becomes red highlighted flash five times, it means the calibration fails, please follow steps 1.2.3 and calibrate again.

## Writing sensitivity adjustment

Under normal circumstances no need to adjust.

When the writing is heavy, thin handwriting, can be adjusted to the high sensitivity of the gear, or write light, thick handwriting, can be adjusted to the low sensitivity of the gear.

The user must first calibrate according to the calibration method, and then adjust the sensitivity which is as follows:

- A. Hold the 1st and 3rd keys 3S, release the button after the red light is on, and writing sensitivity is moderate;
- B. Continue to hold 1S till green light and release the button, so the writing sensitivity is low;
- C. Continue to hold 1S and release the button after the red light is on, so the writing sensitivity is high.

## ■ Parameters

### Graphics Tablet

Dimension: 297.4\*190.0\*11.8mm

Weight: 420g

Work Area: 210\*140mm

Touch Technology: Active electromagnetic induction

Sensor Height: 10mm

Data interface: Micro USB

Reading resolution: 5080LPI

Reading Speed: 230PPS

Shortcut Keys: 5 customizable hard shortcut keys

## Pen

Dimension: 138.3\*11.8mm

Weight: 12g

Battery Capacity: 80mAh

Charging Time: 2~3hs

Available Time: About continuous use for 200 hours

Pressure Level: 8192Levels

## ■ Q&A

Abnormal Occurrence	Solution
The tablet doesn't work	<ol style="list-style-type: none"><li>1) Make sure the tablet is powered;</li><li>2) Make sure the pen is powered;</li><li>3) Make sure the driver is installed correctly; otherwise, please reinstall the driver</li><li>4) Reconnect the USB cable or replace the USB interface</li></ol>
The pen doesn't work	<ol style="list-style-type: none"><li>1) Make sure your pen is fully charged;</li><li>2) Make sure that the pen you are using is compatible with the product. If not, please follow the pen calibration method before using</li><li>3) Make sure the driver is installed correctly</li></ol>
Keyboard shortcuts don't work	<ol style="list-style-type: none"><li>1) Make sure the shortcut function is enabled in the driver, and click ok or apply</li><li>2) Ensure the correct definition of key functions</li></ol>
No pressure in the drawing software	<p>It is possible that you have another brand of digital board driver on your computer, or that you have the drawing software open during installation, and the files are not installed correctly into the system directory.</p> <p>Please uninstall other brands of digital board driver and close the drawing software, and then reinstall the driver. After the driver is installed, open the drawing software for use.</p>
Can't the computer go into sleep mode	<p>Please do not place the pen on the surface of the tablet out of use. This will keep the tablet awake.</p>

The pen keys are not working	When pressing the pen button, please make sure that if the pen tip touch the tablet surface, and the distance between the pen tip and the tablet surface is within 10mm.
Why Photoshop CS6 is not available in Win10	<ol style="list-style-type: none"><li>1) Uncheck Windows Ink in the driver and restart PS CS6 software.</li><li>2) The version above PS CS2018 is recommended</li></ol>