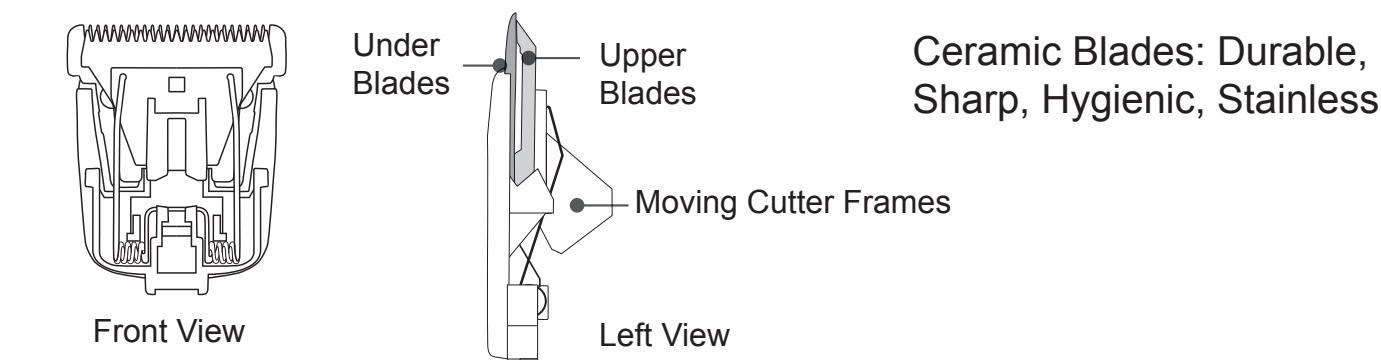
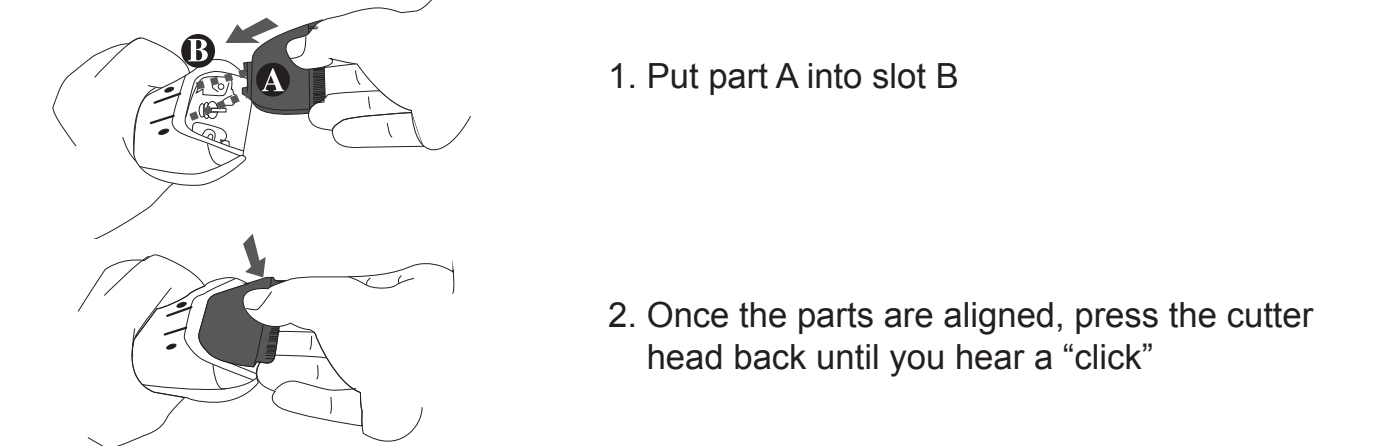


## Cutter Heads

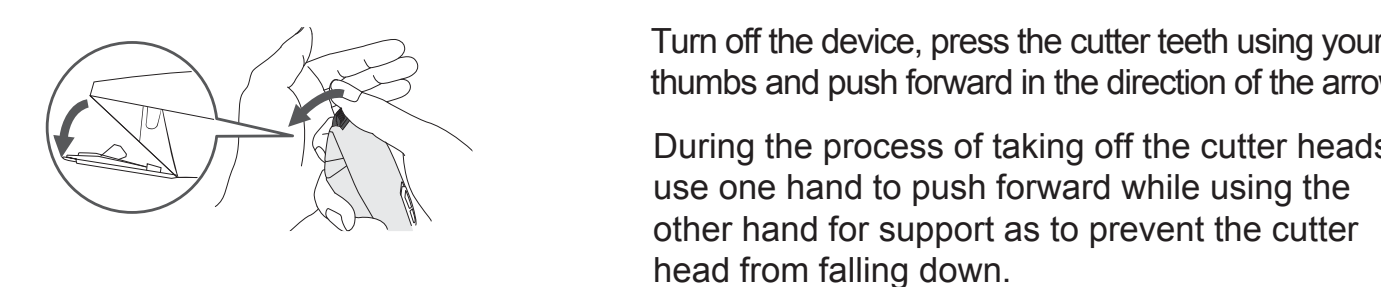
### ✎ Cutter head features



### ✎ Cutter head installation



### ✎ Taking the cutter head on and off



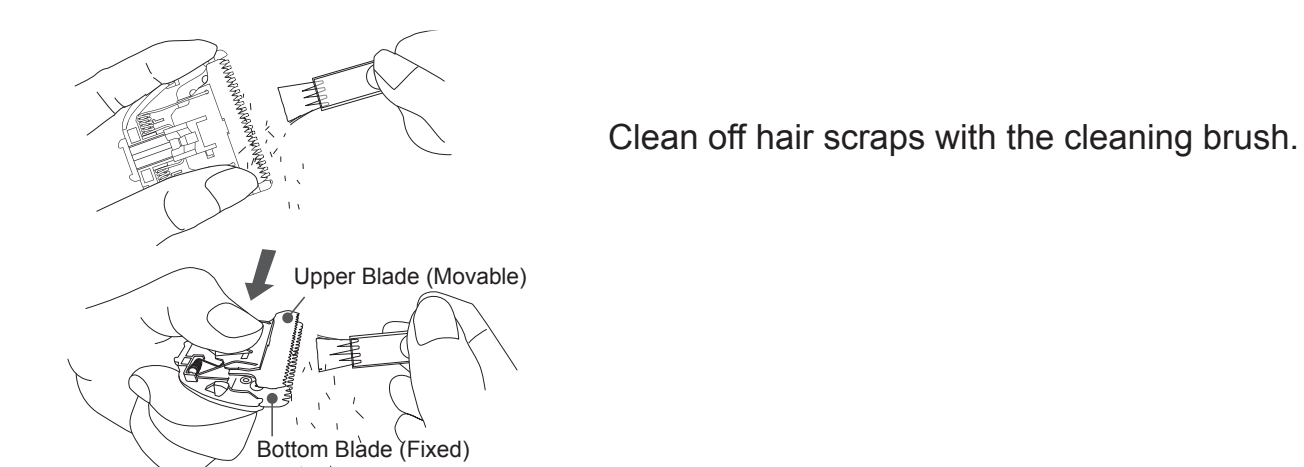
### Kind Attentions

- ◆ White ceramic blades are very fragile and prone to damage when being put on or off. Please be careful with this.
- ◆ When ceramic blades are broken, they will start clumping hair and stop running smoothly.
- ◆ Please replace cutter heads every 60 days for peak performance.
- ◆ Sterilize blades regularly and make sure they are hygienic prior to cutting hair.

— 5 —

## Cutter Head Cleaning and Maintenance

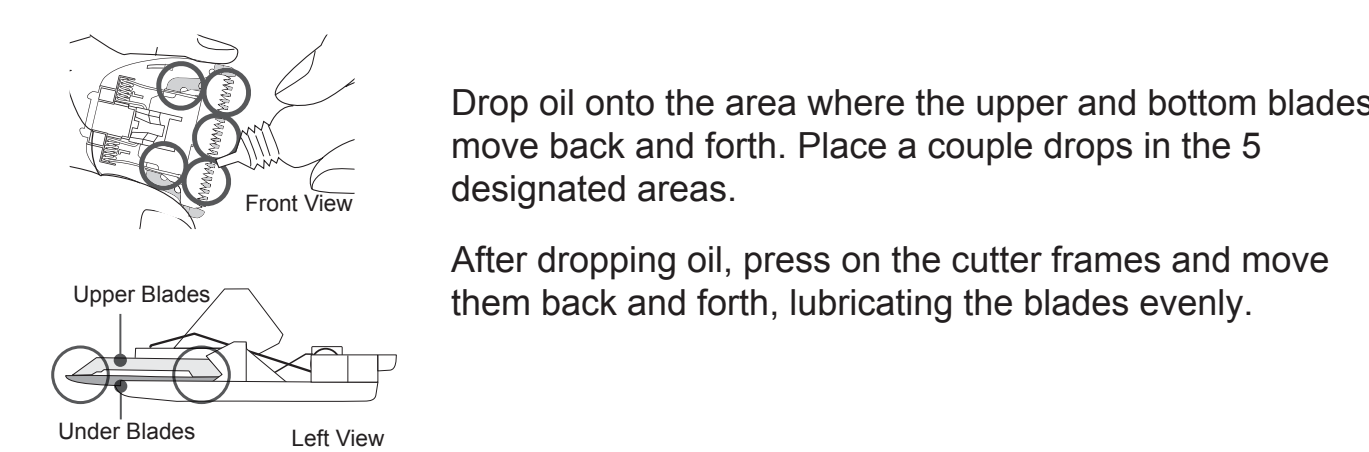
### ✎ Cutter heads cleaning



### Kind Attentions

- ◆ Caution: Never take off spring on the cutter head. Doing otherwise may prevent the spring from reverting to its original state.
- ◆ Please take off cutter blades after use. Clean off scrappy hair on the cutter head surface and in between blades as to maintain sharpness.
- ◆ Clean cutter head with water and thoroughly dry it after.
- ◆ After each cleaning, please drop lubricating oil as to maintain the clippers.

### ✎ Cutter head lubrication



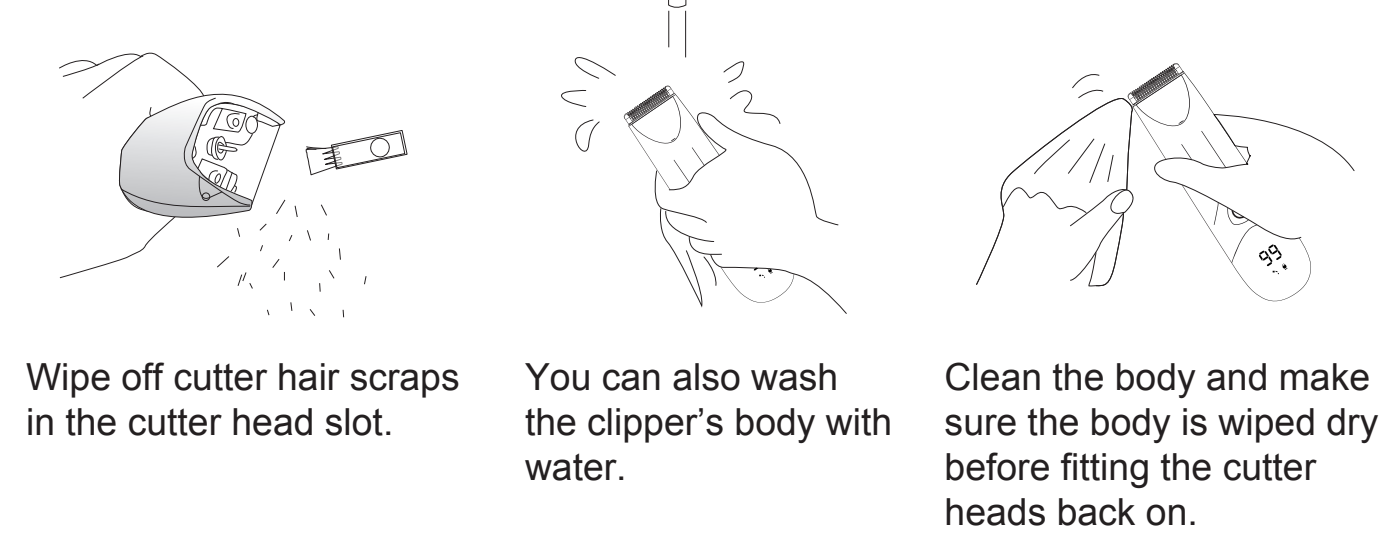
### Kind Attentions

- ◆ Blade lifetime has something to do with running frequency, hair quality and maintenance.
- ◆ Replace worn cutter heads to avoid hair clamping. For any replacement part, kindly consult our agencies and repair service centers. Never fit other maker cutter heads on our clippers.
- ◆ During using the clipper, you know the cutter head may get a little warm. It's quite normal and it doesn't influence proper use.

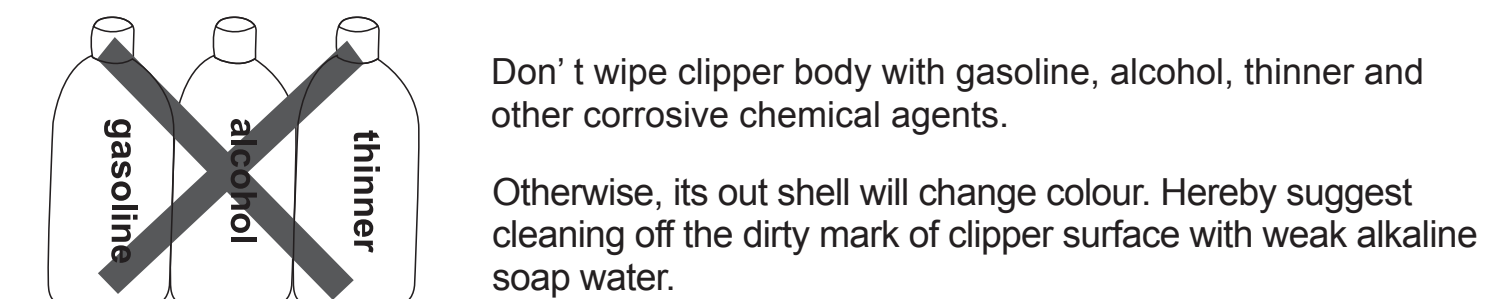
— 6 —

## Trimmer Body Cleaning and Maintenance

### ✎ Body cleaning



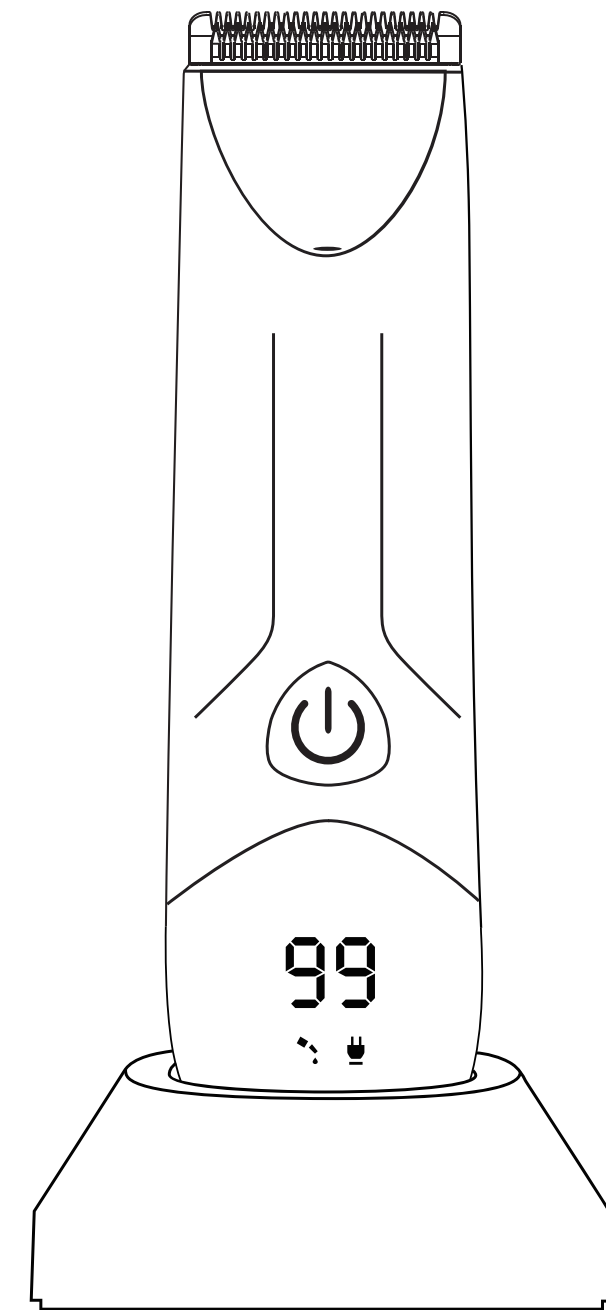
### ✎ Prohibited Matters



— 7 —

## Rechargeable Waterproof Hairscape Trimmer

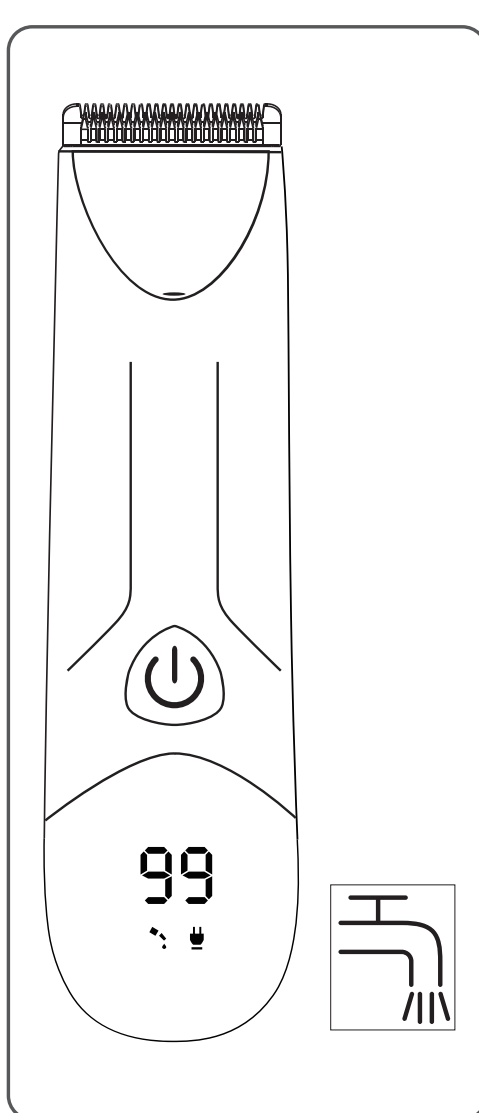
Model No.: RFCD-5400



## User Manual

Before using this product, please read through this manual carefully. This device should only be operated by adults or with the supervision of adults only. This is not a toy and for child safety, please store this device in a place where it is out of reach of any children.

## Introduction



### ✎ Technical Highlights

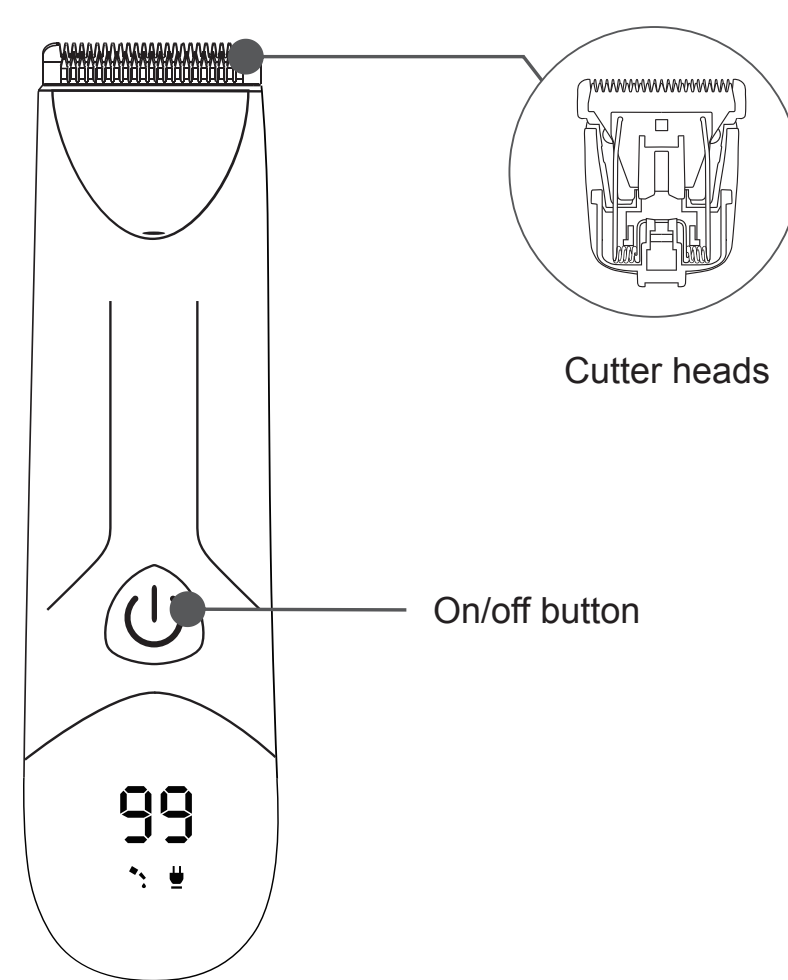
- ◆ Special head in R-shaped corner, no scratches on skins.
- ◆ With 2 guide combs, easy to cut hair of 4 lengths.
- ◆ As per power and environment, select charging use or plug-in use.
- ◆ Global universal voltage, 5V / DC USB port input with short-circuit protection.
- ◆ Detachable cutter heads, easy to wipe off scrappy hair.
- ◆ Precise LCD display shows percentage of remaining power, oil filling reminder and charging reminder. When it is fully charged, the number stop blinking and shows 99.

### ✎ Technical Specifications

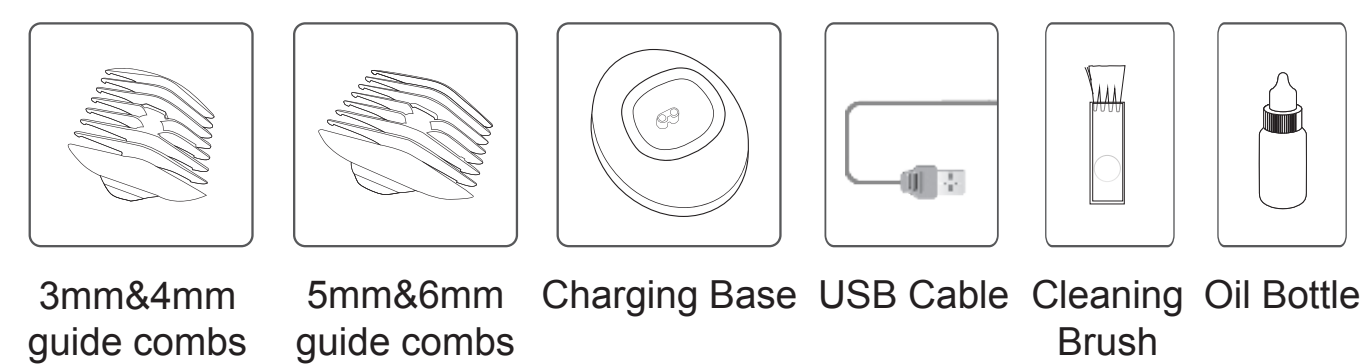
LCD Digital Display  
Built-in rechargeable 600mA Li-Ion battery  
Charging Time: 3-4 hours  
Running Time: 100-120 minutes  
Accessories: USB Charging Cable, Lubricating Oil, Cleaning Brush, Charging Base, Limit comb.

— 1 —

## Accessories



### ✎ Accessories view



— 2 —

## Using Method

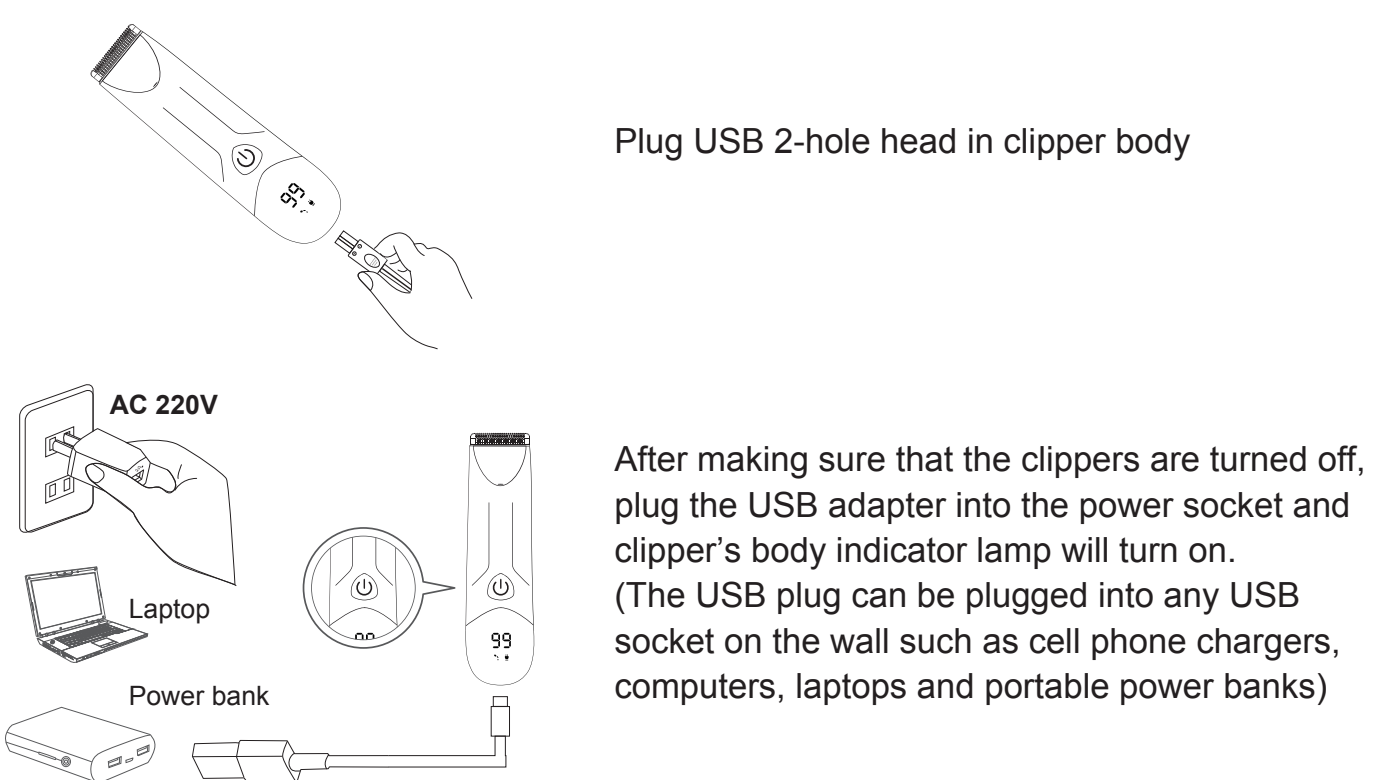
### ✎ On/off

Press the button to turn on the device. The number on the display indicating that the remaining power is gradually disappearing. The refueling prompt is white for about 10 seconds. Press the button a second time and the device will shut down.

### Switch On Reminder

- ◆ When the device is switched on, the display would turn on and shows the remaining power.

### ✎ Plug-in use/charging use

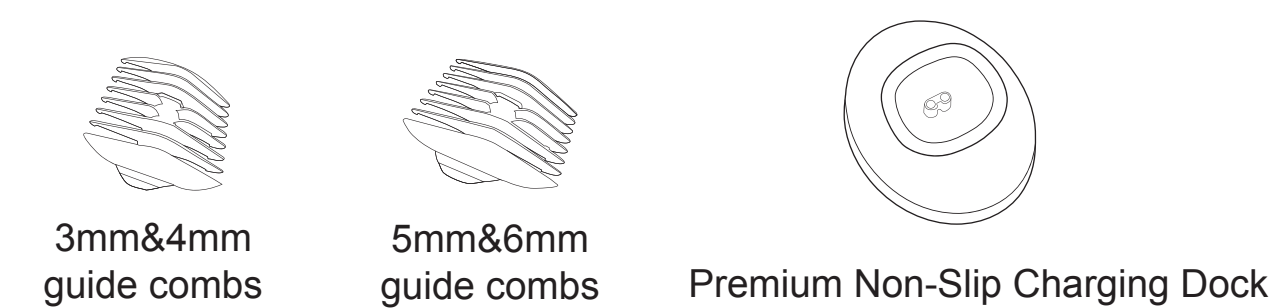


Warm Reminder: After purchasing this product, please fully charge it before first use. If it has not been used for a long time, please charge it every 3 months.

— 3 —

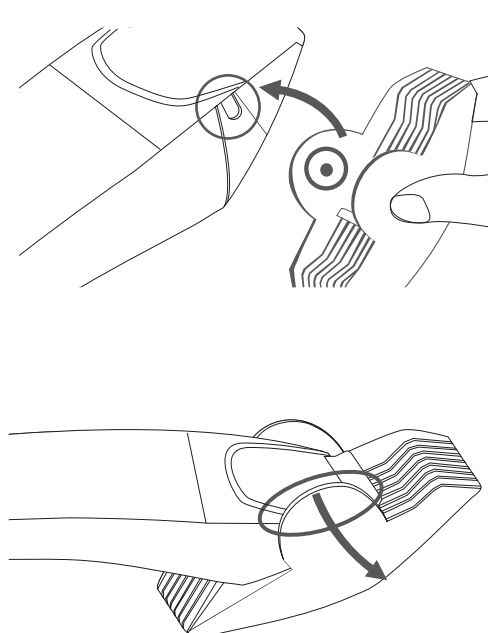
## With and Without Guide Combs

### ✎ Guide Comb View



- ◆ Through guide combs, cut hair lengths of 3mm/4mm/5mm and 6mm.
- ◆ Charge the device using the Charging Dock or directly with the cable.

### ✎ How To Put On/Take Off The Comb



### Notes

- ◆ The guide comb allows for the adjustment to the desired hair length, not hair thickness.

— 4 —