

PHILIPS CONSUMER LIFESTYLE

Main Article Group Grooming (E15)

Project name HC7650_15_WOR_FL_06331

SGS number 5607378

12-NC.NBR 422204106331

Masterdrawing 422203593791

Barcode No. 8710103897903

Size _____ BWR _____ Type _____

Operator(s) manisha.shirsat

VERSION No. 1

Date in 09/01/2019

Date amended 10-Jan-19

Cyan Magenta Yellow Black

High Gloss Diecut

Date Check

Check to Client Brief

Artwork document

Legend Number of colors

12NC Trapping/Bleed

Barcode Hi-res Images

Diecut Job Size

Deliverables

PDF 1.3 Epson

PDF 1.5 Leapfile

Approval

QC Lithographer SGS

Product Manager

Project Manager Suzanne Dohmen

Paper Stock
GD2 450 gr/m2

www.philips.com/learnmore
For environmental information on Philips products refer to



Learn more: www.philips.com/hair



HC7650
with 2 year warranty



This design is made of 95% recycled material.
Zwölfprozent des Gehalts an Kunststoffteilen
Sind wiederverwendbar. Die restlichen 5% sind aus
reineren Materialien. Bitte trennen Sie die
Kunststoffteile von den anderen Materialien.
Das Recycling-Symbol zeigt die Art der
Kunststoffe an, die für dieses Produkt
verwendet wurden. Bitte beachten Sie,
dass es sich um ein Produkt aus
Kunststoff handelt.



Grooming:
Shaving
& Styling
www.philips.com/groomingapp



4222 041 06331



Series 7000

Trim-n-Flow PRO technology

The new comb design prevents hair of any length from getting stuck in the comb to finish your style in one go

- Trim-n-Flow PRO-Technologie Das neue Kammdesign verhindert, dass sich Haare – egal wie lang – im Kamm aufsitzen verfangen. So erhalten Sie im Handumdrehen Ihren Look
- Technologie Trim-n-Flow PRO Le nouveau sabot empêche les cheveux, quelle que soit leur longueur, de rester coincés, pour une coupe en un seul passage
- Trim-n-Flow PRO-technologie Met het nieuwe ontwerp van de kam blijft haar, ongeacht de lengte, niet meer vastzitten in de kam, waardoor uw haar in een handomdraai in model zit
- Tecnología Trim-n-Flow PRO Il nuovo design del pettine impedisce ai capelli di qualsiasi lunghezza di incastrarsi, consentendo di finire il tuo stile in una sola passata
- Tecnología Trim-n-Flow PRO El nuevo diseño del peine-guía evita que los pelos de cualquier longitud se atascuen, para que puedas dar los últimos toques de una pasada
- Tecnología Trim-n-Flow PRO O novo design do pente apaiador evita que cabelos de qualquer comprimento fiquem presos no pente para efetuar o corte de uma só vez

2x
faster*
clipping



Series 7000

28⁺

Zoom wheel with 28 lock-in length settings 0.5-28mm

- Zoom-Rad mit 28 einstellbaren Schnittlängen, von 0,5 bis 28 mm
- Molette avec 28 hauteurs de coupe verrouillables, 0,5-28 mm
- Instelwiel met 28 vergrendelbare lengtestanden van 0,5 tot 28 mm
- Rotellina di precisione con 28 lunghezze di taglio da 0,5 a 28 mm
- Rueda con 28 posiciones de longitud (0,5-28 mm) con bloqueo
- Regulador com 28 comprimentos de 0,5-28 mm com bloqueio



- Stainless steel blades
- Edelstahlklingen
- Lames en inox
- Roestvrijstalen messen
- Lame in acciaio inossidabile
- Cuchillas de acero inoxidable
- Lâminas em aço inoxidável



- Turbo mode for thicker hair
- Turbo-Modus für dickeres Haar
- Mode Turbo pour cheveux épais
- Turbo-modus voor dikker haar
- Modalità Turbo per i capelli più spessi
- Modo Turbo para el pelo más grueso
- Modo Turbo para cabelos mais grossos

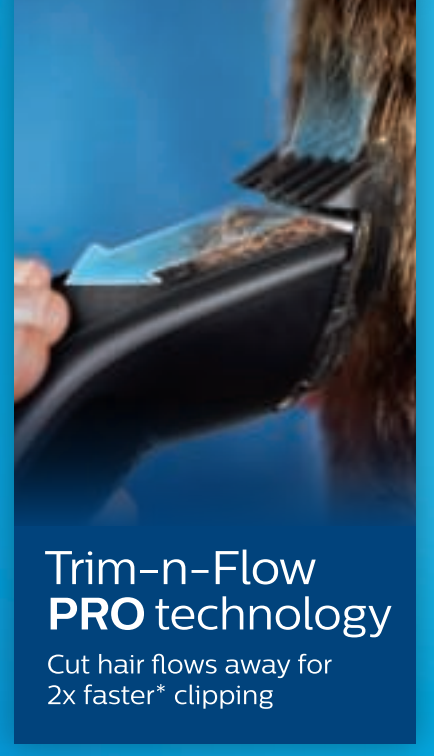
Includes barber kit

- Inklusive Friseur-Set
- Inclut un kit barbe
- Inclusief kapperset
- Kit Barber incluso
- Incluye el kit de barbero
- Inclui kit de barbeiro



Series 7000

Hair Clipper



Trim-n-Flow PRO technology

Cut hair flows away for 2x faster* clipping

HC7650



Corded and cordless use up to 90 min



28 length settings



2 year warranty



100% washable for easy cleaning

Includes a storage case



Long hair comb



Short hair comb



Beard comb



Made in Indonesia | Distributed in Netherlands
Produced in Indonesia | Distribuido en Holanda
Fabricado en Indonesia | Distribuido en Holanda
Fabricado en Indonesia | Distribuido en Holanda
Fabricado en Indonesia | Distribuido en Holanda

100-240 V
50/60 Hz



HC7650/15



Philips Consumer Lifestyle B.V.
Tussensteep 4
5206 AD Dordrecht
The Netherlands
Emporium:
PHILIPS SAAS A.B.E.
TZABEVA 1-3
TK 1321
XANAKUR
TETREBI HOKANAN
INDONESIA



UV Gloss lacquering
Gloss value >80 (according to ISO2813)

PHILIPS CONSUMER LIFESTYLE			
Main Article Group	Grooming (E15)		
Project name	HC7650_15_WOR_FL_06331		
SGS number	5607378		
12-NC.NBR	422204106331		
Masterdrawing	422203593791		
Barcode No.	8710103897903		
Size	BWR _____ Type _____		
Operator(s)	manisha.shirsat		
VERSION No.	1		
Date in	09/01/2019		
Date amended	10-Jan-19		
Cyan	Magenta	Yellow	Black
High Gloss	Diecut		
Date Check			
<input type="checkbox"/> Check to Client Brief			
Artwork document			
<input type="checkbox"/> Legend	<input type="checkbox"/> Number of colors		
<input type="checkbox"/> 12NC	<input type="checkbox"/> Trapping/Bleed		
<input type="checkbox"/> Barcode	<input type="checkbox"/> Hi-res Images		
<input type="checkbox"/> Diecut	<input type="checkbox"/> Job Size		
Deliverables			
<input type="checkbox"/> PDF 1.3	<input type="checkbox"/> Epson		
<input type="checkbox"/> PDF 1.5	<input type="checkbox"/> Leapfile		
Approval			
<input type="checkbox"/> QC Lithographer	SGS		
<input type="checkbox"/> Product Manager			
<input type="checkbox"/> Project Manager	Suzanne Dohmen		