

1

2

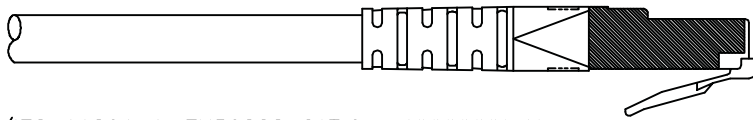
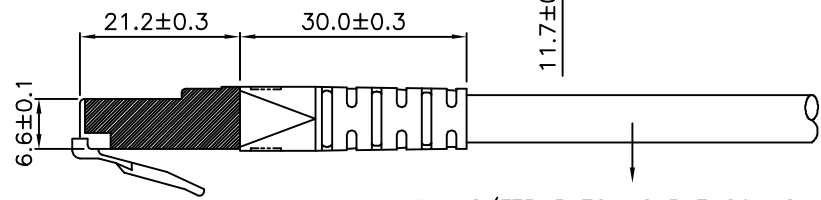
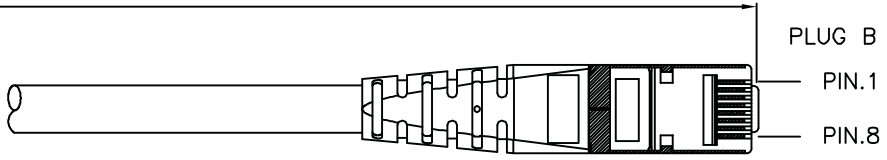
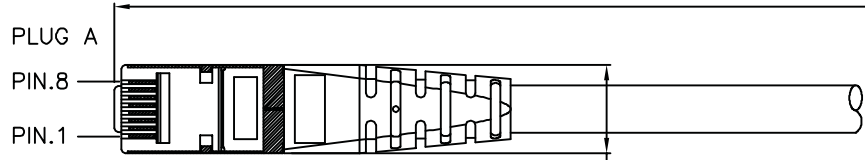
3

4

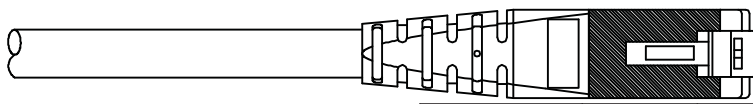
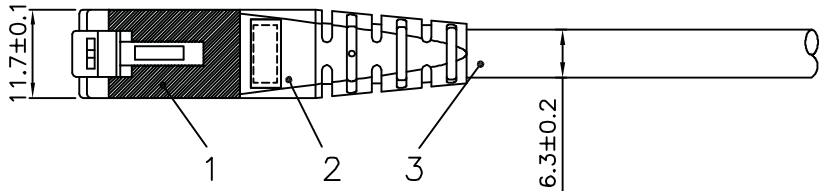
5

6

Total length (optional)



roline S/FTP PATCH CABLE 26AWG 4PR ISO/IEC 11801 & EN50288 CAT.6 XXXXXXXX-X



- (1) Jacket Color : Red(RAL3031)
- (2) Wiring:T568B

| item no. | length | tolerance |
|------------|--------|------------|
| 21.15.1311 | 0.3M | +20 -0 |
| 21.15.1321 | 0.5M | +20 -0 |
| 21.15.1331 | 1M | +20 -0 |
| 21.15.0824 | 1.5M | +20 -0 |
| 21.15.1341 | 2M | +20 -10 |
| 21.15.1351 | 3M | +20 -10 |
| 21.15.1361 | 5M | +30 -20 |
| 21.15.1371 | 7M | +30 -20 |
| 21.15.1381 | 10M | +30 -20 |
| 21.15.1391 | 15M | +30 -20 |
| 21.15.1401 | 20M | +70 -30 |

Specification :

Material :

- RJ45 Plug :
 - Housing : Polycarbonate,Transparent color.
 - Contact material : Phosphor Bronze with 50-60 micro-inch Nickel plated.
 - Contact finished : Min. 50 micro-inch Gold plated on surface contact area.
 - Shield : Bronze with Nickel plated.
- Molding : PVC.
- Cable :
 - Jacket : PVC.
 - Conductor : 26 AWG stranded copper.
 - Isolation : PE.
 - Shield : Aluminum Foil Shielded for Each Pair, Tin Copper Braid.
- Cable structure : S/FTP, 4 twisted pair.
- Minimum Bending Radius: 50mm

| | | | | | |
|---------|-----------------------------------|------------|------------|------------|------------|
| item no | 21.15.1311 | 21.15.1321 | 21.15.1331 | 21.15.0824 | 21.15.1341 |
| | 21.15.1351 | 21.15.1361 | 21.15.1371 | 21.15.1381 | 21.15.1391 |
| Desc | ROLINE Cat 6 S/FTP Patch Cord,Red | | | | |

| | | | | |
|---|------------------------|-------------|-------|--------------|
| "#": Matching DIM. "*": Important DIM. Others General DIM. GENERAL TOLERANCE OF DIMENSIONS X.XXX ±0.005 X.XX ±0.05 X.X ±0.1 | DRAWING | 23.JuL.2016 | byz | |
| | CHECK | 23.JuL.2016 | Jane | |
| | APPROVAL | 23.JuL.2016 | Jaimy | |
| | DATE | NAME | | |
| SCALE | 1/1 (A4) | UNIT | mm | |
| | DRAWING NO. | | | |
| | DRAWING CLASSIFICATION | | S | SHEET 1 OF 1 |

| No. | MODIFIED AREA | ORIGINAL | MODIFY | DATE | MODIFIER |
|-----|---------------|----------|--------|------|----------|
| | | | | | |