

142.00 mm

货号: 3.06.07.1002253 材料: 105g双铜 工艺: 黑白印刷/裁切/骑马钉



MODEL: FD18-2

NOTICE
Clean the Airbrush IMMEDIATELY after use.
Delayed or inadequate cleaning will permanently clog the Airbrush.

1. Features & Functions

Air pressure gauge, air filter, pressure adjustable.
Piston type; oil free.
It can start with pressure, continuous working, powerful.
Thermally protected.
Low noise: 47db.
Auto start and auto stop function.

2. Data Sheet

Type: Single Cylinder Piston Compressor
Power: 1/6HP
Speed: 1450/1700 r.p.m
Air flow: 20~23L/min
Auto stop at 4BAR(57psi), Auto re-start at 3BAR(43psi)
Pressure adjust range: 0~4BAR
Suitable for airbrush with nozzle: 0.2~1.0MM
Net Weight: 3.6KG
Dimension: 275×140×220mm

6. Air compressor structure



a. Rubber feet b. Power switch c. Handle
d. Pressure regulator e. Pressure gauge f. Connection
g. Water Release Valve

Products name: Regulator & Filter with Gauge
Type: AFR-2000
Characteristic:
The AFR-2000 is an in-line low pressure regulator with a 100 P.S.I gauge and moisture trap. This regulator gives user control of operating pressure as well as assisting in furnishing clean, dry and regulated air. Regulators must only be used as instruction and warnings specify.
Operation:
1. The gauge reflect the working pressure of the air tools.
2. Pull the Pressure regulator up; turn clockwise to increase the pressure; turn counter-clockwise to reduce the pressure.
3. Turn the pressure regulator to get the right working pressure needed, and fix it. Do not turn the button when it can not be adjusted.
4. Pull the button water-release valve to release the water.

PARTS LIST

PARTS NO.	DESCRIPTION	QTY	PARTS NO.	DESCRIPTION	QTY
#1	Round-Head Screw	8	#41	Cylinder Cap	1
#2	Condenser	1	#42	Air Filter	1
#3	Housing	1	#43	Screw	1
#4	Ply-yarn drill	1			
#5	Power Cord with Plug Spring	1			
#6	Ply-yarn drill	1			
#7	Back Cover	1			
#8	Fixed Screw	4			
#9	Rest-head Sheath	1			
#10	Plug Spring	1			
#11	Line	1			
#12	Pipe	1			
#13	Rest-head Sheath	1			
#14	Plug Spring	1			
#15	Wire Connector	3			
#16	Fixed Motor	1			
#17	Bearing	2			
#18	Rotary Motor	1			
#19	Rubber Feet	4			
#20	Crank	1			
#21	Bearing	1			
#22	Connect Rod	1			
#23	Snap Ring	1			
#24	Front Cover	1			
#25	Piston Ring	1			
#26	Connect Rod Cover	1			
#27	Metal Sheet	1			
#28	Stainless Gasket	1			
#29	Connect Rod Screw	1			
#30	Cylinder	1			
#31	Compressor Body	1			
#32	O-Ring	1			
#33	Clapboard	1			
#34	Mushroom Ring	1			
#35	O-Ring	1			
#36	Pressure Switch	1			
#37	O-Ring	1			
#38	Handle	1			
#39	Gasket	4			
#40	Screw	4			

3. Operation directory

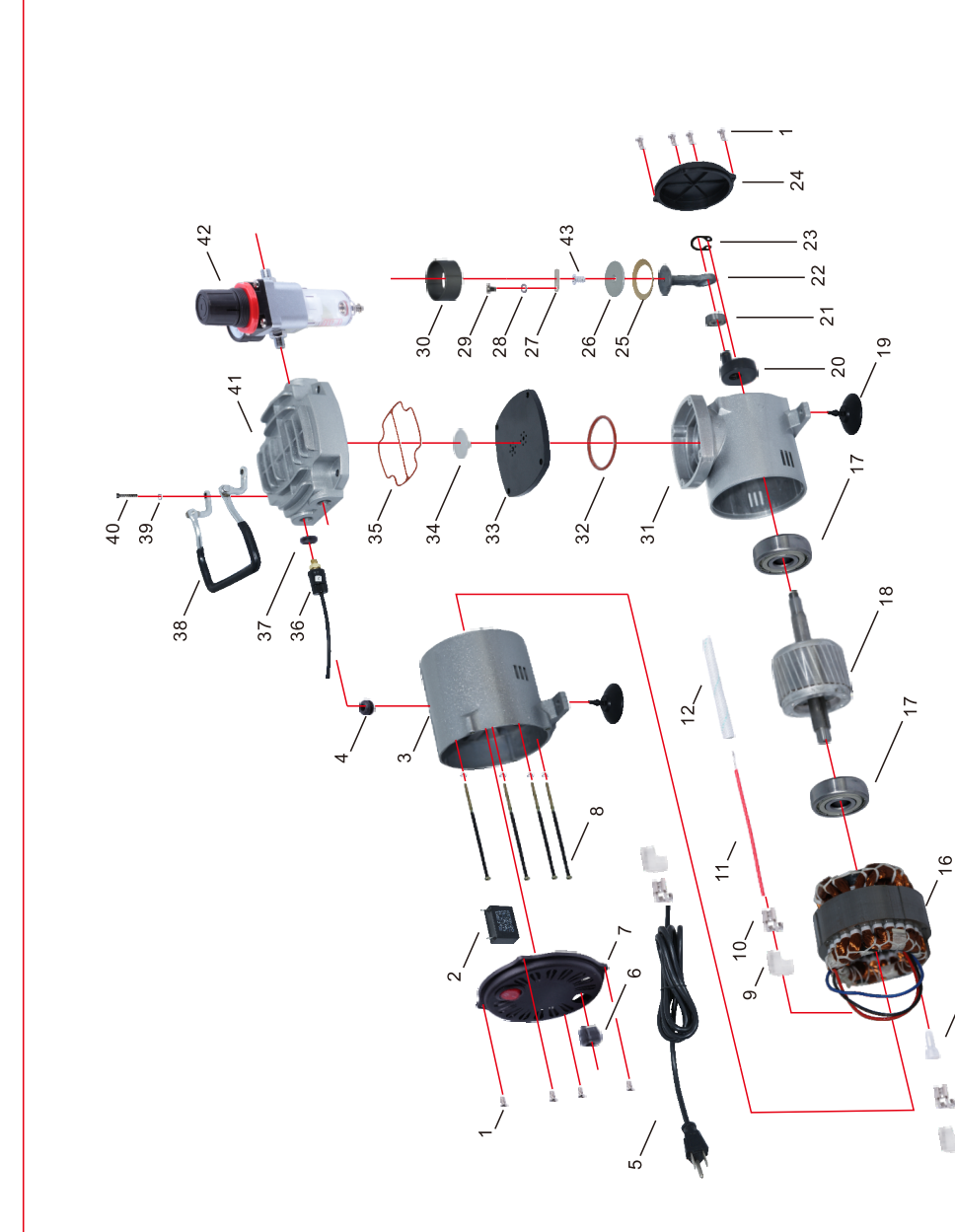
1. Usually the outlet thread size of our air compressor is 1/8" BSP. If you need the 1/4" BSP or other NPT screw thread, you may get the other adapters to fix the outlet, then you can connect with different air hoses.
2. The original air hose have rubber airproof inside; the user can make the airtight by hand, and get good performance. If the air hose is not the original, usually the air hose and air compressor cannot be well airproof. However, 100% airtight is only effective for auto stop function air compressor. Seal thread tape can be used to prevent leakage. This elastic tape is available in all stores selling sanitary products.
3. Connect the air compressor, air hose and airbrush (or other air tools), plug into the mains supply, turn on the switch, then the air compressor will start work. The press gauge will show the max pressure, and you can adjust the working pressure by adjusting the pressure adjustor.
4. Checking the air leakage. Please do not use any air tools before the compressor reach the maximum pressure and observe whether it will be auto-stop. If the compressor will not be auto-stop, please turn off the switch, then check the index on pressure gauge, if it is very steady, means the airtight is very good; While the index decline down quickly, it means there has the air leakage in the area of the connection. Please check and make it airtight, because any small leakage will affect the performance of the compressor.
(It may lead to frequently auto-stop and auto-start).
5. The difference between maximum pressure and working pressure. The compressor's maximum pressure is the highest pressure it can build up, and the working pressure is the one shown on the pressure gauge When the connected airbrush is opened. Apparently, the working pressure is the constant pressure the compressor can maintain during airbrushing. The level of this working pressure depends on the nozzle diameter of the airbrush to which it is connected; the larger the nozzle diameter, the bigger the amount of air which can escape and the lower the compressor's working pressure.

6. The bottom of the regulator & filter is the water release valve, and users can open the valve to release the water or moisture at any time.

4. Notice

- The users should choose the right air compressor with suitable air flow and pressure according to the actual work requirement.
- Before connecting the compressor, check the main voltage compatible with the electrical characteristics of the motor.
- Please follow local electrical rules, and safety rules. And use the socket which must be earthing.
- Never leave the appliance exposed to dust, acids, vapors, explosive or flammable gasses or atmospheric agents (rain, sun, fog, snow).
- The vacuum pump must be used in suitable environments (well-ventilated, with an ambient temperature between +5°C and +40°C).
- Never use the appliance in your bare feet or wet feet, as well as the wet hand.
- Never allow the children to touch the working machine or insert the stick into the machine. It will cause the danger of scald or get an electric shock.
- Do not open or tamper with any part of the compressor. Contact an authorized Service Center.

5. Spare Part List



210.00 mm