

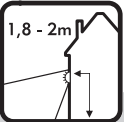
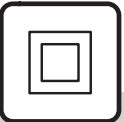
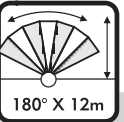


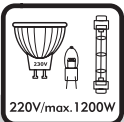



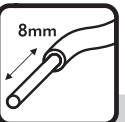






ES34 - 10.017.10
ES34Z - 10.017.11

PRODUCT ATTACHMENT

Use safety instructions 1

 1	 2	 1,8 - 2m 4	 8	 180° X 12m 12	 10sec 7min 14
 15	 220V/max.1200W 17	 E27- 300W 20	 E27- 1200W 21	 H05RN-F 3 X 1mm ² 25	 8mm 26
 35					

220-240VAC/50Hz.



ES34Z- 10.017.11



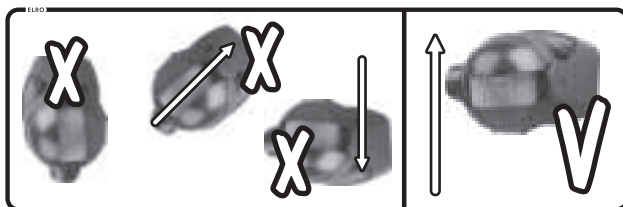
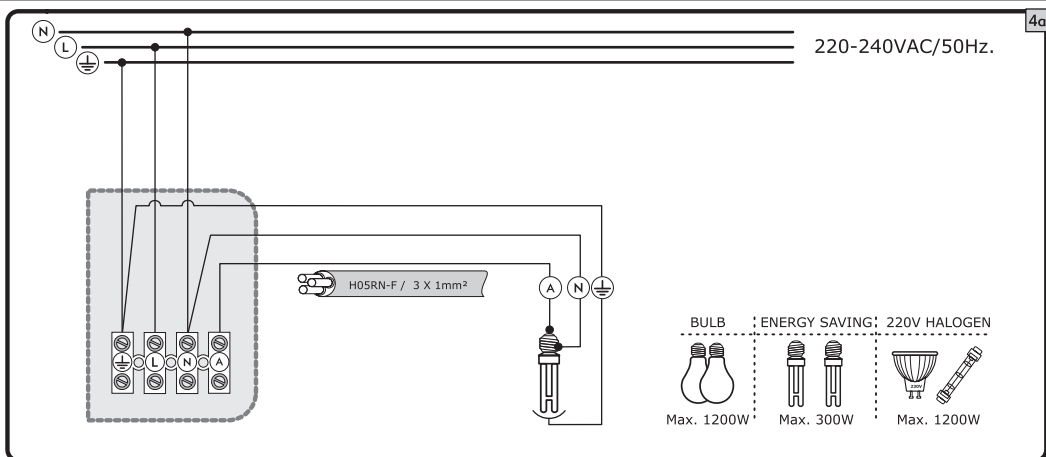
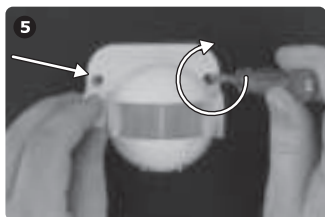
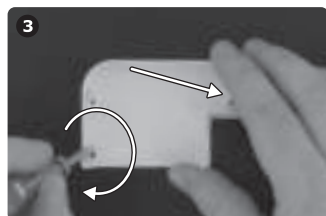
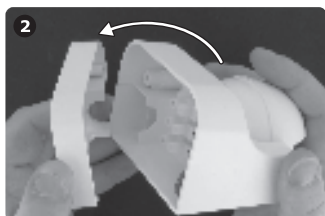
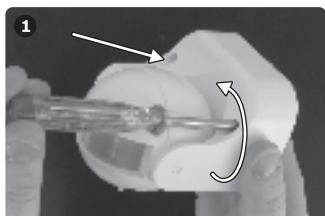
ES34 - 10.017.10

smartwares
Europe
Jules Verneweg 87
5015 BH Tilburg
The Netherlands
www.smartwares.eu

S

ES34 - 10.017.10
ES34Z - 10.017.11

PRODUCT ATTACHMENT
Use safety instructions 1



Test detector:

- 1- **TIME** → —
- 2- **LUX** → ☀
- 3- ⌚ **60 seconds**

Use detector

7min ⌚ **10sec** →

TIME **LUX**