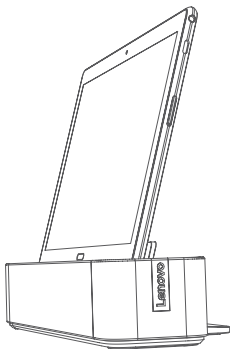


**Lenovo**

# Lenovo Smart Tab

## Safety, Warranty & Quick Start Guide



- Read this guide carefully before using your device.  
All information labeled with \* in this guide only refers to the WLAN + LTE model.

# Read before using your device

## Read first - regulatory information

Device models equipped with wireless communications comply with the radio frequency and safety standards of all countries and regions in which they have been approved for wireless use. In addition, if your product contains a telecom modem, it complies with the requirements to connect to the telephone network in your country.

Be sure to read the *Regulatory Notice* for your country or region before using the wireless devices contained in your device. To obtain a PDF version of the *Regulatory Notice*, refer to the “Downloading publications” section below.

## Getting support

To get support on network services and billing, contact your wireless network operator. To learn how to use your device and view its technical specifications, go to <https://support.lenovo.com>.

## Downloading publications

Electronic versions of your publications are available from <https://support.lenovo.com>. To download the publications for your device, go to <https://support.lenovo.com> and follow the instructions on the screen.

## Accessing your tablet *User Guide*

Your *User Guide* contains detailed information about your device. To access your *User Guide*, go to <https://support.lenovo.com> and follow the instructions on the screen.

## Legal notices

Lenovo and the Lenovo logo are trademarks of Lenovo in the United States, other countries, or both.

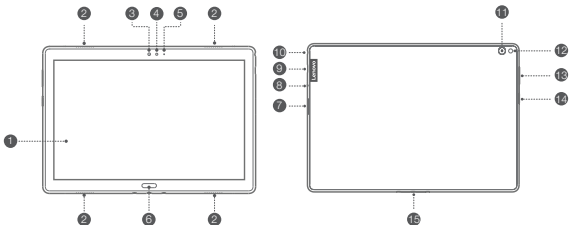
Other company, product, or service names may be trademarks or service marks of others.

Manufactured under license from Dolby Laboratories. Dolby, Dolby Atmos, and the double-D symbol are trademarks of Dolby Laboratories.

LIMITED AND RESTRICTED RIGHTS NOTICE: If data or software is delivered pursuant a General Services Administration “GSA” contract, use, reproduction, or disclosure is subject to restrictions set forth in Contract No. GS-35F-05925.

# Device overview

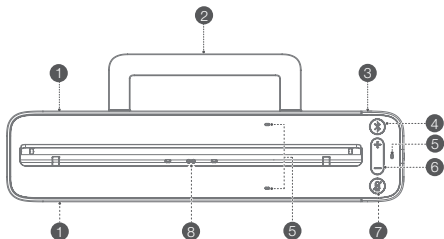
Marketing name	Model	Version
Lenovo Tab P10	Lenovo TB-X705F	WLAN
	Lenovo TB-X705L	WLAN + LTE
Lenovo Tab M10	Lenovo TB-X605F	WLAN
	Lenovo TB-X605L	WLAN + LTE



- ① Touch screen
- ② Speakers
- ③ Front camera
- ④ Light sensor<sup>✕</sup>
- ⑤ Indicator
- ⑥ Fingerprint sensor<sup>✕</sup>
- ⑦ Card tray
- ⑧ Microphone
- ⑨ Type C USB 2.0 connector
- ⑩ Headset connector
- ⑪ Rear camera
- ⑫ Flash<sup>✕</sup>
- ⑬ Volume buttons
- ⑭ Power button
- ⑮ Smart connector

- 🔗 • Connect your device to other Lenovo accessories through Smart Connector. The accessories vary by country/region.
- Your device supports CTIA earphones.
- ⚠️ • The WLAN version does not have a Nano-SIM card slot.
- All information labeled with <sup>✕</sup> in this guide only refers to the Lenovo Tab P10.

Marketing name	Model
Lenovo Smart Dock	Lenovo HA-200



- 1 Speakers
- 2 Stability support
- 3 Power adapter connector
- 4 Bluetooth button
- 5 Microphone
- 6 Volume buttons
- 7 Microphone On/Off button
- 8 Smart connector

## Indicator

Bluetooth button	Solid blue	Bluetooth connected
	Fast blinking blue	Pairing mode
	Off	Bluetooth not connected
Microphone On/Off button	Red	Microphone disabled
	Off	Microphone on

- The microphone on/off button will stay red until the first time you log into your Amazon account while docked.
- To turn off Bluetooth of the dock, press and hold the Bluetooth button and microphone on/off button together.
- All pictures and illustrations in this document are for reference only and may differ from the final product.

## Installing cards

Use a microSD card (sold separately) for extra storage.

\*To access cellular networks with your tablet (WLAN + LTE version only), insert a Nano-SIM card provided by your carrier into the slot as shown below.

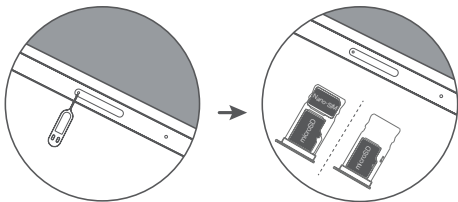


Figure 1: Lenovo Tab P10

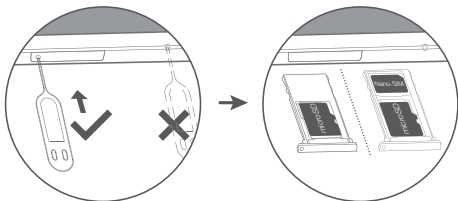
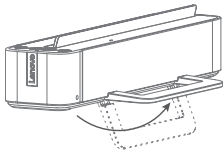


Figure 2: Lenovo Tab M10

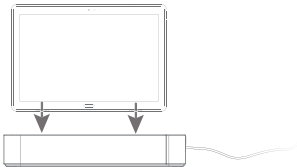
- ☑ Only Nano-SIM cards work with your tablet.
- ⚠
  - Do not insert or remove the Nano-SIM card while your tablet is powered on. Doing so may cause permanent damage to your Nano-SIM card or tablet.
  - Do not insert the eject tool into the microphone. Doing so may cause permanent damage to your tablet.

## Getting started

1. Open the stability support.



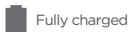
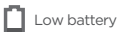
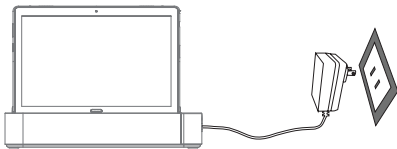
2. Plug the power adaptor into the dock and then into a power outlet.
3. Place your tablet in the dock.
  - Make sure to correctly align the smart connector on the dock with the smart connector on the tablet. The tablet will vibrate and the display will change when docked correctly.



## Charging your tablet

You might need to charge the battery before using your device.

As shown in the picture below, you can charge the battery through the dock.



- You can check the charging status through the battery status icon in the notification panel when the tablet is powered on and being charged.

## Turning on/off the tablet




**Turn on:** Press and hold the power button until the Lenovo logo appears.

**Turn off:** Press and hold the power button for a few seconds, then tap **Power off**.

**Restart:** Press and hold the power button for about 10 seconds until the device turns off. Then turn it on again in the normal way.


## Connecting your tablet to your dock via Bluetooth

1. Place your tablet in the dock.
2. Log in to your Amazon account on the tablet.
3. Make sure the Bluetooth of the tablet and the dock are turned on. They will connect automatically.

 If the tablet cannot connect to your dock automatically, press and hold the Bluetooth button on the dock for a few seconds to enter pairing mode. In pairing mode, you can manually pair the dock with the tablet.

## Talking to your Lenovo Smart Tab

1. Log in to your Amazon account on the tablet.
2. Enable the hands free feature on the tablet's Quick Settings panel.
3. Say "Alexa" to get your device's attention.

 Please make sure the default voice assistant on your tablet settings is set to "Alexa".

## Things to try

The things to try provides examples of things you can ask.

Alexa, what's the weather?

Alexa, play my Flash Briefing.

Alexa, how tall is Mt. Everest?

Alexa, add "Dinner with Mom" to my calendar.

Alexa, what are some top-rated Indian restaurants?

Alexa, set an alarm for 6 a.m.

Alexa, set a timer for 20 minutes.

Alexa, is it going to rain today?

Alexa, what movies are playing nearby?

Alexa, how far away is the Statue of Liberty?

*To learn more about the app and access additional features, check out "Things to Try" in the Amazon Alexa app.*

# Important safety and handling information

## Plastic bag notice

**Danger:** Plastic bags can be dangerous. Keep plastic bags away from babies and children to avoid danger of suffocation.

## Built-in rechargeable battery notice

**Danger:** Do not attempt to replace the internal rechargeable lithium ion battery. Replacing the original battery with an incompatible type may result in an increased risk of personal injury or property damage due to explosions, excessive heat, or other risks.

Do not attempt to disassemble or modify the battery pack. Attempting to do so can cause harmful explosions or battery fluid leakage.

When disposing of the battery, comply with all relevant local ordinances or regulations. Do not dispose the battery pack in municipal waste. Dispose used batteries according to the instructions.

The battery pack contains a small amount of harmful substances. To avoid injury:

- Keep the battery pack away from open flames or other heat sources.
- Do not expose the battery pack to water, rain, or other corrosive liquids.
- Do not leave the battery in an extremely high temperature surrounding environment.
- Avoid short-circuiting the battery pack.
- Keep the battery pack out of reach of small children and pets.
- Do not leave the battery in an extremely low air pressure surrounding environment. It may result in an explosion or the leakage of flammable liquid or gas from the battery.

To extend battery life, we recommend charging the battery to at least 30 to 50% capacity each time, and recharging it every three months to prevent over discharge.

## Caution about high volume usage

**Warning:** Exposure to loud noise from any source for extended periods of time may affect your hearing. The louder the sound, the less time is required before your hearing could be affected. To protect your hearing:

- Limit the amount of time you use headsets or headphones at high volume.
- Avoid turning up the volume to block out noisy surroundings.
- Turn the volume down if you can't hear people speaking near you.



If you experience hearing discomfort, including the sensation of pressure or fullness in your ears, ringing in your ears or muffled speech, you should stop listening to the device through your headset or headphones and have your hearing checked.



To prevent possible hearing damage, do not listen at high volume levels for long periods.

## **Safety instructions for parents and adult supervisors**

Your mobile device is not a toy. Not recommended for children under 3 years of age to play with it. As with all electrical products, precautions should be observed during handling and using of electrical products to reduce the risk of electric shock. If parents choose to allow children 3 or older to use the device, they should caution his or her child about the potential hazard while using and handling the mobile device.

Parents should inspect the mobile device (including the ac power adapter and the small part, as applicable) periodically for damage. Routinely check this mobile device to ensure that the device is working properly and is safe for children to use.

## **Service and support information**

The following information describes the technical support that is available for your product, during the warranty period or throughout the life of your product. Refer to the *Lenovo Limited Warranty* (LLW) for a full explanation of Lenovo warranty terms. See “*Lenovo Limited Warranty notice*” later in this document for details on accessing the full warranty.

### **Online technical support**

Online technical support is available during the lifetime of a product at:  
<https://support.lenovo.com>

### **Telephone technical support**

You can get help and information from the Customer Support Center by telephone. Before contacting a Lenovo technical support representative, please have the following information available: model and serial number, the exact wording of any error message, and a description of the problem.

Your technical support representative might want to walk you through the problem while you are at your device during the call.

## Worldwide Lenovo Support telephone list

**Important:** Telephone numbers are subject to change without notice. The most up-to-date telephone list for the Customer Support Center is always available at: <https://www.lenovo.com/support/phone>

If the telephone number for your country or region is not listed, contact your Lenovo reseller or Lenovo marketing representative.

## Warranty information

### *Lenovo Limited Warranty notice*

This product is covered by the terms of the LLW, version L505-0010-02 08/2011. Read the LLW at [https://www.lenovo.com/warranty/llw\\_02](https://www.lenovo.com/warranty/llw_02). You can read the LLW in a number of languages from this Web site. If you cannot view the LLW from the Web site, contact your local Lenovo office or reseller to obtain a printed version of the LLW.

### Warranty period and type of warranty service

Country or region	Warranty period	Type of warranty service
United Kingdom, Australia, New Zealand	Parts and Labor - 1 year Battery Pack - 1 year Dock -1 year	1,3
India, Mexico	Parts and Labor - 1 year Battery Pack - 1 year Dock -1 year	1,4
United States of America, Canada, Japan	Parts and Labor - 1 year Battery Pack - 1 year Dock -1 year	1,5
Spain, France, Germany, Italy	Parts and Labor - 2 years Battery Pack - 1 year Dock -2 years	1,3

\* Excludes some components. 90-day limited warranty for power adapters, keyboards, plastics, and hinges.

### **Type of warranty service**

1. Customer Replaceable Unit (“CRU”) Service
2. On-site Service
3. Courier or Depot Service
4. Customer Carry-In Service
5. Mail-in Service
6. Customer Two-Way Mail-in Service
7. Product Exchange Service

For a full explanation of the types of warranty service, refer to the full warranty.

See “*Lenovo Limited Warranty* notice” for details on accessing the full warranty.

If you need support for this device, do not go back to your point of purchase. Please visit <https://support.lenovo.com>, where you will find answers to frequently asked questions, software updates and details on how to get in touch with us.

### **EurAsia compliance mark**



## **Environmental, recycling, and disposal information**

### **General recycling statement**

Lenovo encourages owners of information technology (IT) equipment to responsibly recycle their equipment when it is no longer needed. Lenovo offers a variety of programs and services to assist equipment owners in recycling their IT products. For information on recycling Lenovo products, go to <http://www.lenovo.com/recycling>.

## Important battery and WEEE information



Batteries and electrical and electronic equipment marked with the symbol of a crossed-out wheeled bin may not be disposed as unsorted municipal waste. Batteries and waste of electrical and electronic equipment (WEEE) shall be treated separately using the collection framework available to customers for the return, recycling, and treatment of batteries and WEEE. When possible, remove and isolate batteries from WEEE prior to placing WEEE in the waste collection stream. Batteries are to be collected separately using the framework available for the return, recycling, and treatment of batteries and accumulators.

Country-specific information is available at:  
<http://www.lenovo.com/recycling>

## Recycling information for Japan

Recycling and disposal information for Japan is available at:  
<http://www.lenovo.com/recycling/japan>

## Additional recycling statements

Additional information about recycling device components and batteries is in your *User Guide*. See “**Accessing your tablet User Guide**” for details.

## Battery recycling marks

Battery recycling information for Taiwan



Battery recycling information for the United States and Canada



**US & Canada Only**

## Battery recycling information for the European Union



Energy efficiency mark



## Restriction of Hazardous Substances Directive (RoHS)

### Turkey

The Lenovo product meets the requirements of the Republic of Turkey Directive on the Restriction of the Use of Certain Hazardous Substances in Waste Electrical and Electronic Equipment (WEEE).

Türkiye AEEE Yönetmeliğine Uygunluk Beyanı

Bu Lenovo ürünü, T.C. Çevre ve Orman Bakanlığı'nın "Atık Elektrikli ve Elektronik Esya Bazı Zararlı Maddelerin Kullanımının Sınırlandırılmasına Dair Yönetmelik (AEEE)" direktierine uygundur.

AEEE Yönetmeliğine Uygundur.

### Ukraine

Цим підтверджуємо, що продукція Леново відповідає вимогам нормативних актів України, які обмежують вміст небезпечних речовин

### India

RoHS compliant as per E-waste (Management) Rules.

### Vietnam

Lenovo products sold in Vietnam, on or after September 23, 2011, meet the requirements of the Vietnam Circular 30/2011/TT-BCT ("Vietnam RoHS").

### European Union

Lenovo products sold in the European Union, on or after 3 January 2013 meet the requirements of Directive 2011/65/EU on the restriction of the use of certain hazardous substances in electrical and electronic equipment ("RoHS recast" or "RoHS 2"). For more information about Lenovo progress on RoHS, go to:

[https://www.lenovo.com/us/en/social\\_responsibility/RoHS-Communication.pdf](https://www.lenovo.com/us/en/social_responsibility/RoHS-Communication.pdf)

### Singapore

Lenovo products sold in Singapore, on or after June 1, 2017, meet the requirements of Government Gazette order No. S 263/2016 Restriction of Hazardous Substances in Electrical and Electronic Equipment in Singapore ("SG-RoHS").

# European Union compliance statement

## European Union conformity

EU contact: Lenovo, Einsteinova 21, 851 01 Bratislava, Slovakia



## Compliance with the RE Directive

Lenovo PC HK Limited declares that the radio equipment type Lenovo TB-X705F, Lenovo TB-X705L, Lenovo TB-X605F, Lenovo TB-X605L, Lenovo HA-200 is in compliance with Directive 2014/53/EU.

The full text of the EU declaration of conformity is available at the following internet address:

[http://www.lenovo.com/us/en/social\\_responsibility/EU\\_DoC\\_tablets](http://www.lenovo.com/us/en/social_responsibility/EU_DoC_tablets)

This radio equipment operates with the following frequency bands and maximum radio-frequency power:

Model Name	Frequency Bands	Maximum Conducted Power (dBm)
Lenovo TB-X705L	UMTS B1	23
	UMTS B8	24
	LTE B1/B7	22.5
	LTE B3/B8/B20/B40	23.5
	LTE B38	23
	WLAN 2400-2483.5	17.5
	WLAN 5150-5350	16
	WLAN 5470-5850	15.5
	Bluetooth 2400-2483.5	10.5
Lenovo TB-X705F	WLAN 2400-2483.5	18
	WLAN 5150-5350	16.5
	WLAN 5470-5850	15.5
	Bluetooth 2400-2483.5	9.5

Model Name	Frequency Bands	Maximum Conducted Power (dBm)
Lenovo TB-X605L	UMTS B1	22.5
	UMTS B8	24
	LTE B1, 3, 7, 8, 20, 38, 40	23.5
	WLAN 2400-2483.5	20
	WLAN 5150-5850	17
	Bluetooth 2400-2483.5	9.5
Lenovo TB-X605F	WLAN 2400-2483.5	20
	WLAN 5150-5850	17
	Bluetooth 2400-2483.5	9.5
Lenovo HA-200	Bluetooth 2400-2483.5	9.93

The Lenovo HA-200 device should be used with a separation distance of 20 cm to the human body.

 The above information is for EU countries only. Please refer to the actual product for supported frequency bands in other countries.

## Specific Absorption Rate information

YOUR MOBILE DEVICE MEETS INTERNATIONAL GUIDELINES FOR EXPOSURE TO RADIO WAVES.

Your mobile device is a radio transmitter and receiver. It is designed not to exceed the limits for exposure to radio waves (radio frequency electromagnetic fields) recommended by international guidelines. The guidelines were developed by an independent scientific organization (ICNIRP) and include a substantial safety margin designed to assure the safety of all persons, regardless of age and health.

The radio wave exposure guidelines use a unit of measurement known as the Specific Absorption Rate, or SAR. The SAR limit for mobile devices is 2W/kg. Tests for SAR are conducted using standard operating positions with the device transmitting at its highest certified power level in all tested frequency bands. The highest SAR values under the ICNIRP guidelines for your device model are listed below:

Maximum SAR for this model and conditions under which it was recorded.				
Europe 10g SAR Limit (2.0 W/kg)	Lenovo TB-X705L	Body-worn	LTE B40, Wi-Fi, Bluetooth	1.15 W/kg
	Lenovo TB-X705F	Body-worn	Wi-Fi, Bluetooth	1.01 W/kg
	Lenovo TB-X605F	Body-worn	Wi-Fi, Bluetooth	1.25 W/kg
	Lenovo TB-X605L	Body-worn	WCDMA Band I, Wi-Fi, Bluetooth, LTE	1.50 W/kg

During use, the actual SAR values for your device are usually well below the values stated. This is because, for purposes of system efficiency and to minimize interference on the network, the operating power of your mobile device is automatically decreased when full power is not needed for the data connection.

The lower the power output of the device, the lower its SAR value.

If you are interested in further reducing your RF exposure then you can easily do so by limiting your usage or simply using a hands-free kit to keep the device away from the body.



© Copyright Lenovo 2018.

**Reduce | Reuse | Recycle**



V1.1\_20181128



73110100826LE

Printed in China