

LC-POWER™

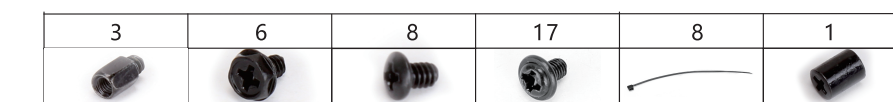
www.lc-power.com

GAMING 802B BLACK_WANDERER_X

Introduction >

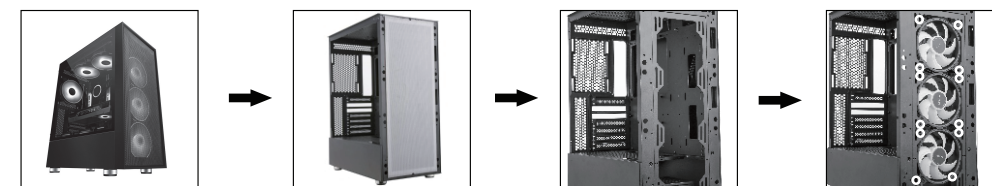
Thank you for purchasing this PC case from LC-Power.
Please read the manual before usage.
Specifications may be subject to change without prior notice.

Included in delivery



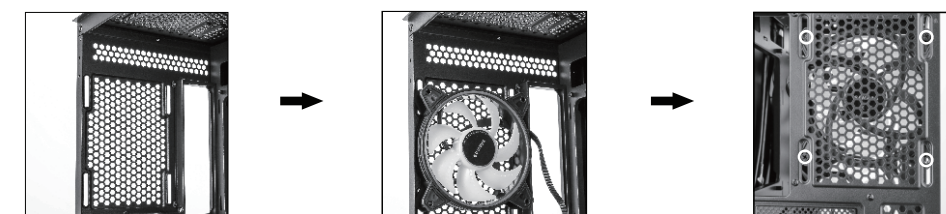
<01>

Front fan installation



Front: 3x 120 / 2x 140 mm

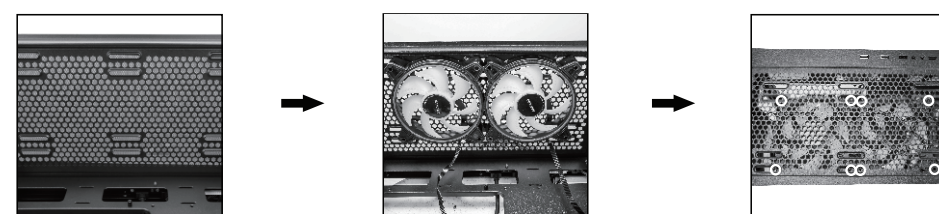
Back side fan installation



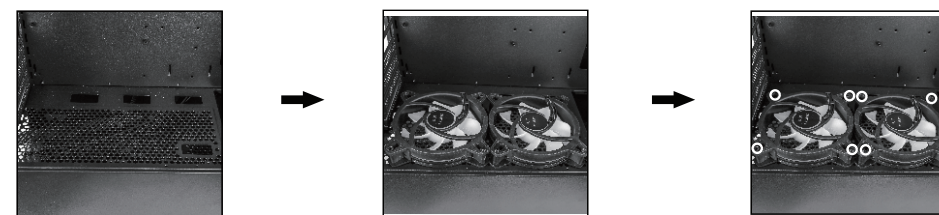
Back side: 1x 120 mm

<02>

Top cover fan installation



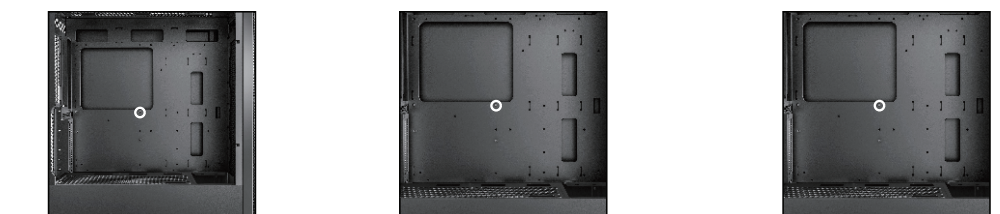
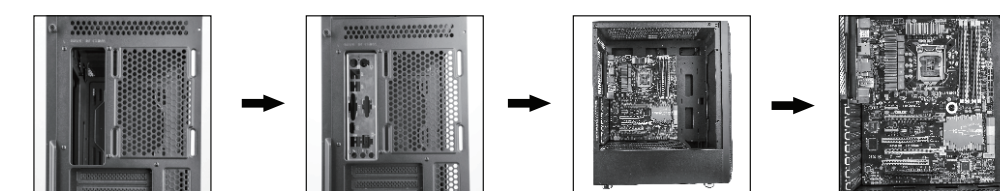
Top: 2x 120 / 2x 140 mm



Inside: 2x 120 mm

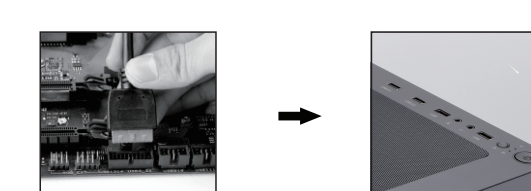
<03>

Mainboard installation

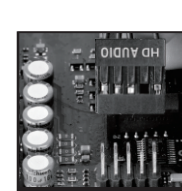


<04>

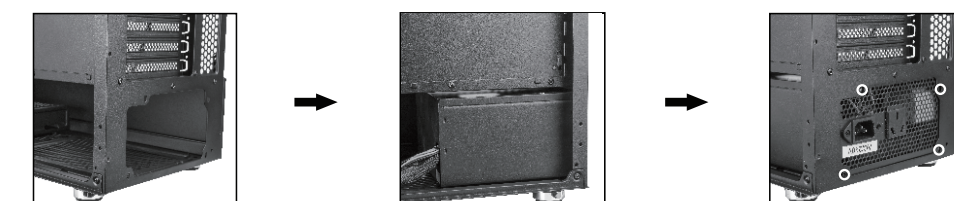
USB 3.0 installation



HD Audio installation



Power supply installation



<05>

Service & notes >

Avoid direct sunlight and a high-temperature environment, keep the case far away from fire and heat sources.

Keep it in dry places, keep it away from corrosiveness causing materials.

The product has a two year warranty period from the date of purchase, service issues will be handled by your dealer.

If the case is damaged due to improper operation, the warranty period expires immediately.

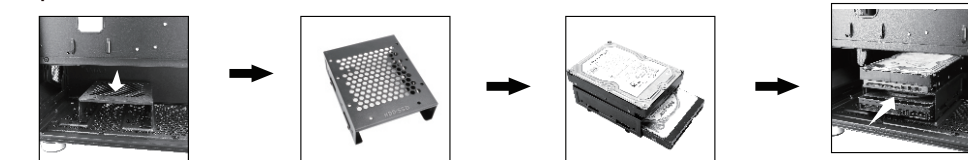
Check www.lc-power.com or contact us by e-mail at: service@lc-power.com.

Silent Power Electronics GmbH
Formerweg 8
47877 Willich
Germany

www.lc-power.com
service@lc-power.com

2.5"/3.5" SSD/HDD installation options

Option 1



2x 3.5" HDD

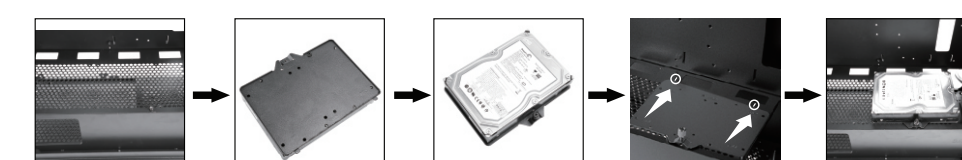
Option 2



1x 3.5" HDD

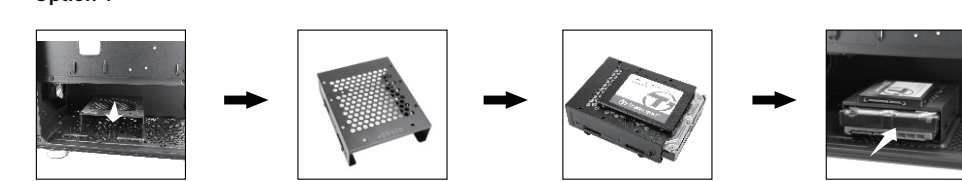
<06>

Option 3



1x 3.5" HDD

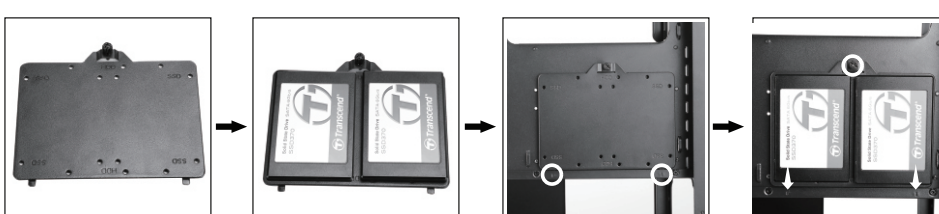
Option 4



1x 3.5" HDD + 1x 2.5" SSD

<07>

Option 5



2x 2.5" SSD

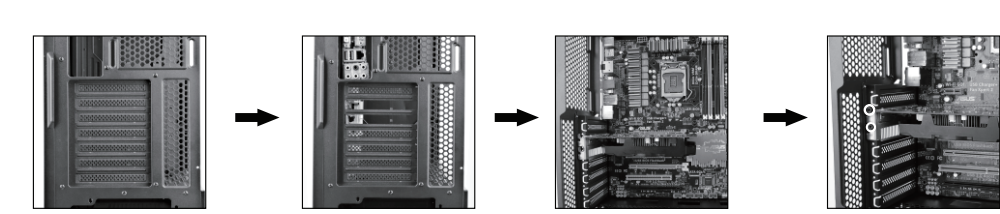
Option 6



2x 2.5" SSD

<08>

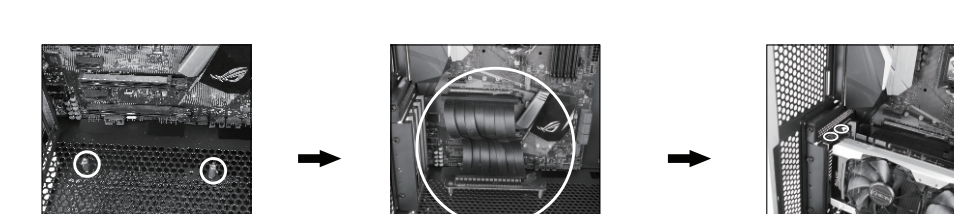
PCI card / GPU installation



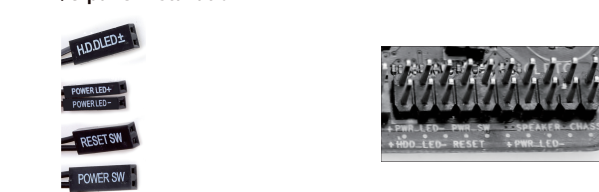
PCI card / GPU installation vertical



<09>



I/O panel installation



<10>