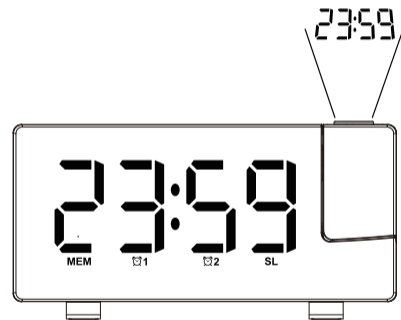


DIGITAL PROJECTION ALARM CLOCK

USER MANUAL

DIGITAL PROJECTION ALARM CLOCK



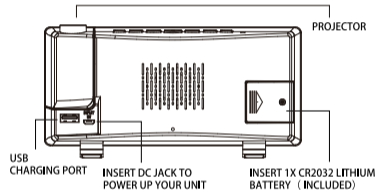
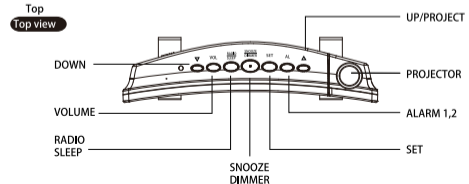
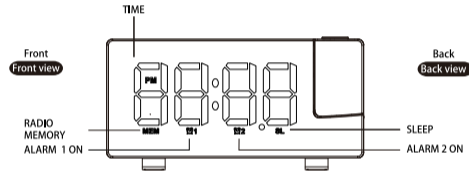
*All safety and operation instructions should be read thoroughly before proceeding and please keep the handbook for future reference.

INDEX

1 FEATURES	03	4 RESTORE FACTORY DEFAULT	13
2 START UP	04	5 PRECAUTION	14
3 SETTINGS	05		
● Time Setting (Turn off the radio)	05		
● Alarm Setting	06		
● FM Radio	07		
FM Setting	07		
Reset Memory	08		
Sleep Timer	09		
● Use Projection	10		
● Brightness Control	11		
● Charging	12		

1 FEATURES

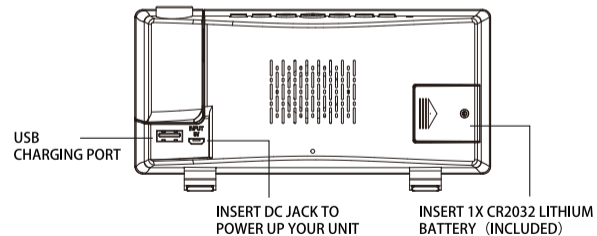
Projection Alarm Clock with AM/FM Radio,
USB port and LED(USB charging)



2 START UP

Please remove plastic insulator tab from button battery compartment in the back and connect the AC/DC adaptor to the power supply and the other end to the USB seat on the back of the clock, then the clock starts to work.

Note: When the power is off, the LED screen won't show, the radio and alarm cannot work. The backup battery only retains the basic settings of time and alarm.



3 SETTINGS

● Time Setting (Turn off the radio)

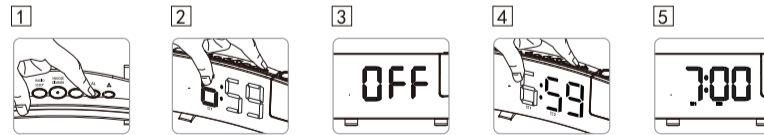
1. Press and hold the “Set” button 3 seconds, the hour digits flash, press “▲” or “▼” to set hour. (Long press “▲” or “▼” will accelerate setting at high speed.)
2. Press “Set” again, the minute digits flash, press “▲” or “▼” to set minute. (Long press “▲” or “▼” will accelerate setting at high speed.)
3. Press “Set” again, the display screen shows “24H” and flashes, press “▲” or “▼” to select “12H” or “24H”
4. Press “Set” again, the display screen shows “09” and flashes, press “▲” or “▼” to select your snooze time from 5 to 60 minutes.
5. Press “Set” or without any operation within 20 seconds, it will exit the current setting mode.

Note: When 12- hour time format is selected, the “PM” LED will appear on the screen in the afternoon.



● Alarm Setting

1. Press “AL” once, the ALARM 1 LED and the hour digits will flash, then press “▲” or “▼” to set hour duration. (Long press “▲” or “▼” will accelerate setting at high speed.)
2. Then press “AL” to set minutes, press “▲” or “▼” to set minute duration.(Long press “▲” or “▼” will accelerate setting at high speed.)
3. Then press “AL” , LED displays “OFF” (alarm off), press “▲” or “▼” to select alarm mode (“rd”= wake-to-radio, “bu” = wake-to-buzzer, “OFF”=alarm off, when “rd” or “bu” is selected, the related alarm will turn on.)
4. If you need second alarm clock, please repeat step 1-3 (Note: Second alarm clock reflects “ALARM 2” on the display screen)
5. Then press “AL” or without any operation within 20 seconds, it will exit alarm setting mode.



Note: When alarm “ALARM 1” or “ALARM 2” is setting, there will be an A1 or an A2 LED on the bottom of the display.

When alarm 1 or 2 is sounding, the related "ALARM 1" or "ALARM 2" LED flashes, press "RADIO/SLEEP" or "AL" one time to stop the alarm and it will sound on the following day. The related icon won't disappear. When alarm is sounding, press "SNOOZE/DIMMER" once, the alarm will be silent and come on again after the setting snooze duration (Default snooze duration is 9 minute, you can set it according to the fourth point of "Time Setting").

Note: 1.If your second alarm activates while the first alarm is sounding or it is in the snooze mode, the second alarm will override the first alarm (the first alarm is reset to come on the next day).
2.Turn on and turn off AL alarm: Press "▼" to select. (There is "AL" symbol in display is on condition and no "AL" symbol is off condition, the sequence is "AL 1" on- "AL 2 "on - "AL 1" off - "AL 2" off)

● FM Radio

FM Setting

1. To turn on the radio, press "RADIO/SLEEP" once, the display shows "ON" and then the radio frequency readings in Mhz.
2. Press "▲" or "▼" once to turn the radio to a desired station, press and hold "▲" or "▼" to scan for the next clear station.
3. To adjust the volume, press "VOL" once, the display shows "L00", press "▲" or "▼" to adjust volume from L00 (minimum) to L15 (maximum).
4. Press "SNOOZE/DIMMER" to turn off the radio.

Note: Keep your radio away from interference source or other electronic devices, which may cause interference to the radio.



*Turn on the radio



*Radio frequency

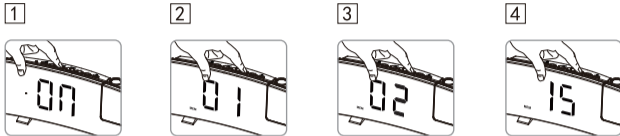


*Adjust the volume from L00(minimum) to L15 (maximum)

Reset Memory

This clock radio features a total of 15 preset memories of FM stations which allow you to preset your favorite stations and access them quickly.

1. Turn on the radio and select a radio station you like to memorize.
2. Press and hold "SET" until "MEM" LED appears and "01" flashes, press "SET" once to store Memory 1.
3. Press "▲" or "▼" to select another station you like to memorize, then press and hold "SET" until "MEM" LED appears and "01" flashes, press "▲" once, "02" appears, press "SET" once to store Memory 02.
4. If you want, you can repeat Step 2 to 3 to preset memories from 3 to 15.
5. To access a preset station at any time, press the "SET" once at a time while the radio is on.
6. To edit a preset station, select another station and the repeat step 2 to 4. This overrides the previous settings.



Sleep Timer

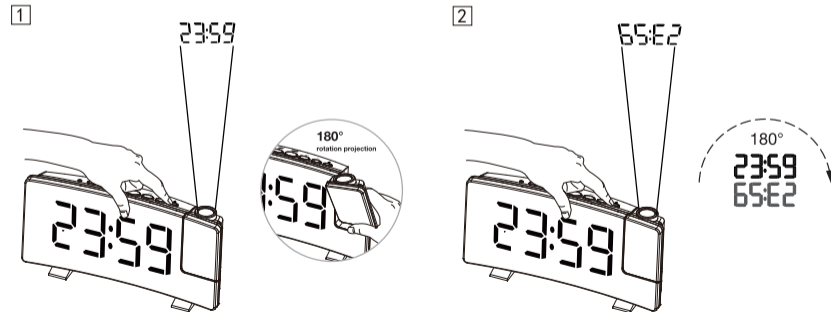
1. Press “ RADIO/SLEEP” twice to enter the sleep mode, then the sleep LED “SL” and sleep time “05” (5 minutes) appear on the display.
2. Then press the “ RADIO/SLEEP” to adjust the sleep timer from 5, 10, 15, 30, 45, 60, 75, 90 or OFF.
3. When the display screen changes back to show the time, press the “RADIO/SLEEP” twice to show the sleep time remaining.
4. The radio will play for the programmed sleep time and then shut off automatically.



● Use Projection

1. In the clock mode, press “▲” once in the AC mode to turn on the projection (bright), then press again to adjust the brightness of projection. (From bright – slightly bright- off, default is off)
2. When the projection is on, press and hold “▲” to revolve projection view. Long press the project key to rotate the projection 180 degrees

Note: There is no projection function in battery-powered mode.



● Brightness Control

In the clock mode, press “SNOOZE/DIMMER” once to adjust the brightness of the LED display.

1. Slightly Bright (default) -- Bright -- Off -- Dim
2. Press and hold the “SNOOZE/DIMMER” button for 2 seconds to select the on/off of Auto mode.
If select “AU” means that LED display automatically enter into the low brightness mode in the dark environment; if select “OFF” that can only control brightness manually (default is “OFF”).

Note: This can only be done when radio is off and the unit is not sounding.



OFF



Auto Mode



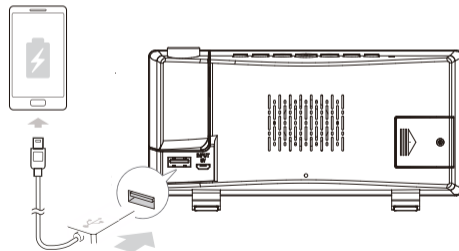
Manual Mode

● Charging

Connect the charging cable of your mobile phone to the USB port at the back of unit, then connect the other end to your mobile phone or other equipment. The clock radio will charge the mobile phone automatically.

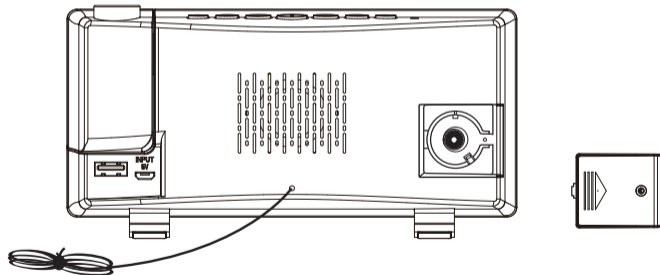
Notes

1. Use the original cable of your mobile phone for charging.
2. Charge with this USB jack may take a long time.



4 RESTORE FACTORY DEFAULT

If the time error occurs, it may be subject to other equipment's electrostatic interference. To resolve this, you can remove the power supply and the backup battery, then the clock can be restored to the Factory Default. Repower on the clock and set the function.



5 PRECAUTION

1. Do not place the electronic clock in a high temperature, water or direct sunlight environment.
2. When placing the clock on the furniture, use a cloth or other protective material to keep away from the furniture.
3. If necessary, use a flannel with a little soapy water to clean the clock. Substances such as gasoline, thinner or similar liquids will damage the clock's surface. Cut off the power before cleaning.
4. If you don't use this clock for a long time, such as a month or even longer, remove the battery to prevent the clock from being corroded; if the battery compartment is corroded or dirty, clean and replace the battery in time.
5. Do not disassemble this product.

