



SaniSupreme
Betaalbaar Design

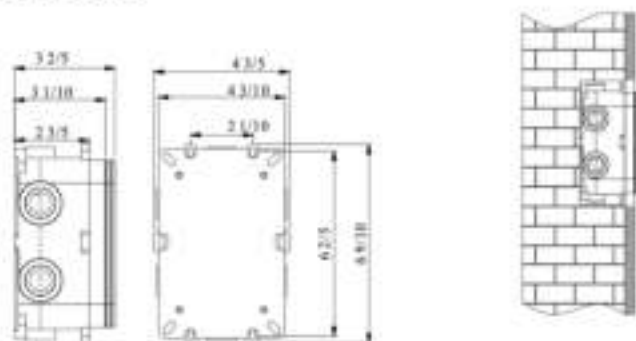
Installatie instructie

INBOUWDOUCHE

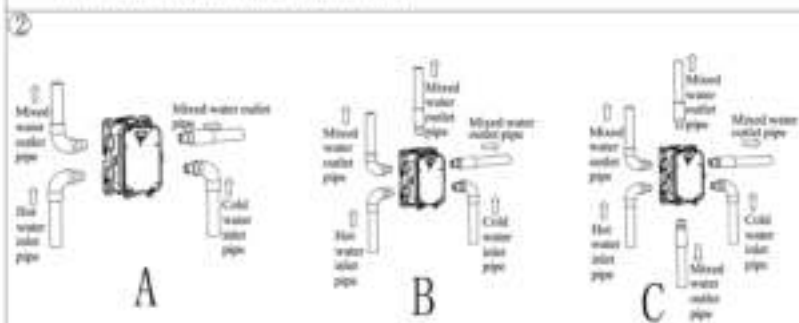
3-WEG




① **Basic Size**

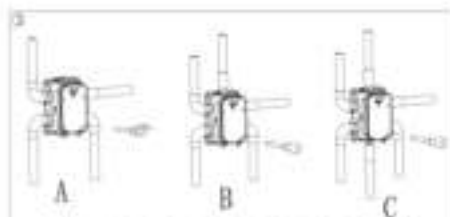


According to the basic size of the embedded box, use a special tool to open the main hole on the solid wall. As shown in the figure, it should be considered that the depth of the wall after the final treatment and the bottom of the opening is $3 \frac{1}{10}$ - $3 \frac{3}{5}$ inch between, the width is between $4 \frac{7}{10}$ - $4 \frac{9}{10}$ inch, and the height is between $6 \frac{9}{10}$ - $7 \frac{1}{10}$ inch.

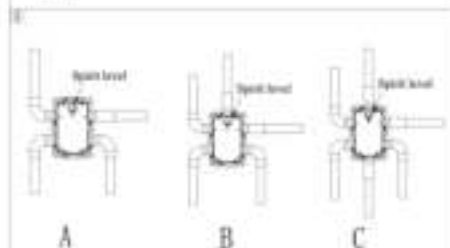


As shown in the figure, the inlet and outlet pipes are embedded. Pay attention to the correct direction of installing the embedded box. Be sure to mark the top ^{TOP} of the baffle upward, and the vertical direction of the embedded box. The lower left interface is connected to the hot water pipe. The interface is connected to the cold water pipe, the upper left interface is connected to the top spray pipe, and the upper right interface is connected to the handheld pipe.

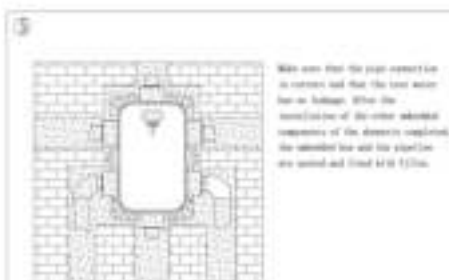
 **Note:** Please strictly follow the cold and hot water pipes shown in the diagram to connect the main body cold water and hot water to the correct position to avoid reverse installation.



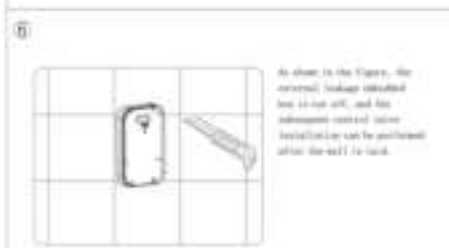
Open the water supply to test whether the left and right drain pipes are correctly installed and leak-free. After the toilet pan is seated, adjust the rim which is far or too shallow. The toilet water supply pipe is tightly connected without leakage. At the same time, the water connection (external or internal) according to the standard has. Make it too wide will leakage comes in water will stand in the wall.



In order to fit the pan, our company's embedded box has a built-in spirit level to correct the level of the embedded box. It is best to use the spirit level to correct the spirit level. If it is not levelled properly, it will affect the panel installation of them.



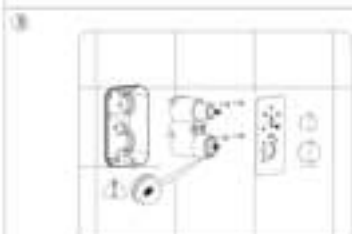
Make sure that the pipe connection is correct and that the toilet water has no leakage. After the installation of the toilet embedded components of the mortar required, the standard for wall for panels are painted and fixed as follows.



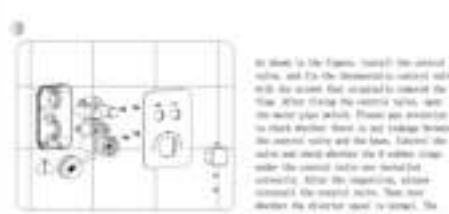
In order to fit the pan, the embedded leakage calculated less to the left, and the adjustment of the panel installation can be performed after the wall is laid.



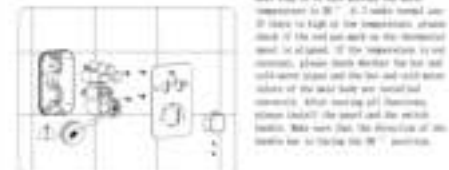
Take out the spirit level, level the box to correct the wall and then water, see as shown in the figure.



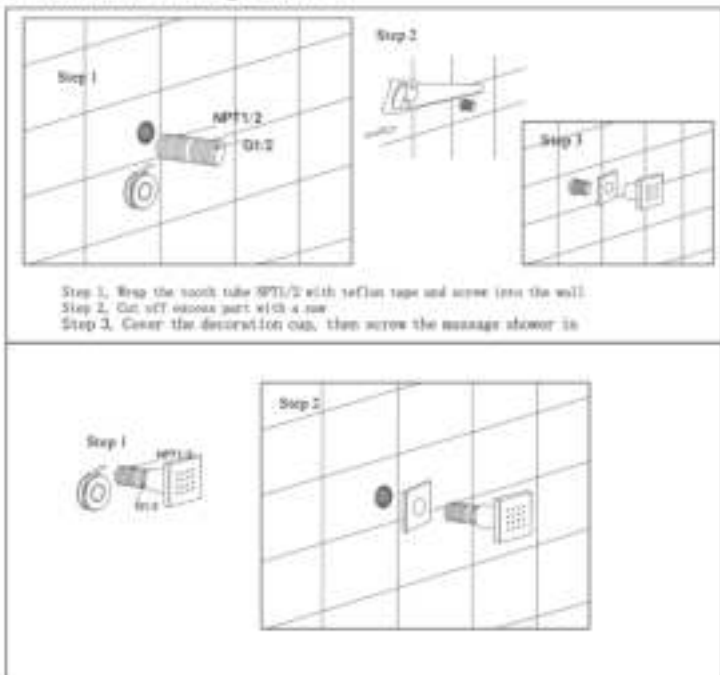
In order to fit the pan, level the mortar level, and then level the spirit level. For attention to the red pen mark. For the spirit level, please include in the package to fit the spirit level (external or the water level) of the water pipe. The direction of the handle step is 30° position.



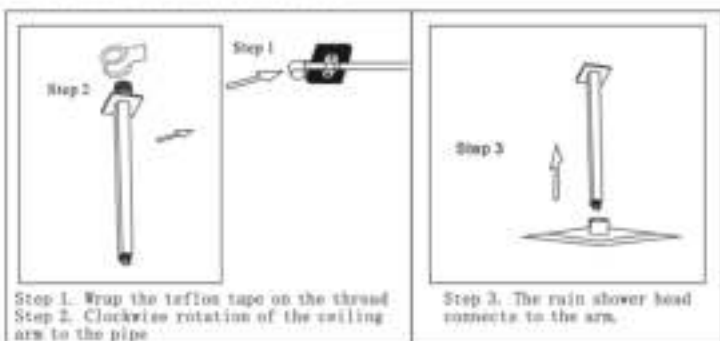
In order to fit the pan, level the mortar level, and fit the mortar to correct level with the spirit level required to correct the floor. After using the spirit level, use the water pipe which. Please pay attention to start whether there is no leakage between the mortar water and the floor. After the water is not used, please use the spirit level to correct the level of the mortar level. After the mortar, please correct the mortar level. Then use the spirit level to correct the mortar level. The water step is to use within the water temperature in 30° - 45.2 water temperature 30° is high in the temperature, which means if the red pen mark in the diagram level is adjusted. If the temperature is not correct, please check whether the hot and cold water pipes and the hot and cold water valves of the water body are installed correctly. After using all the water pipes, please check the panel and the spirit level. Make sure that the direction of the handle step is 30° position.



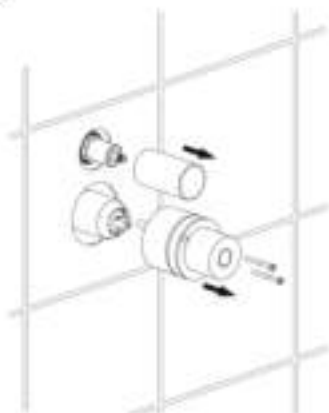
◆ Install the massage shower



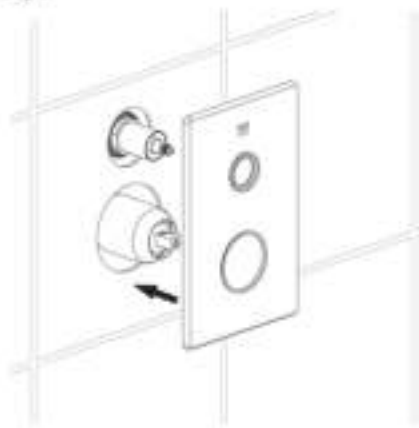
◆ Install the rain shower head



Step 5:



Step 6:



Step 7:



Step 8:



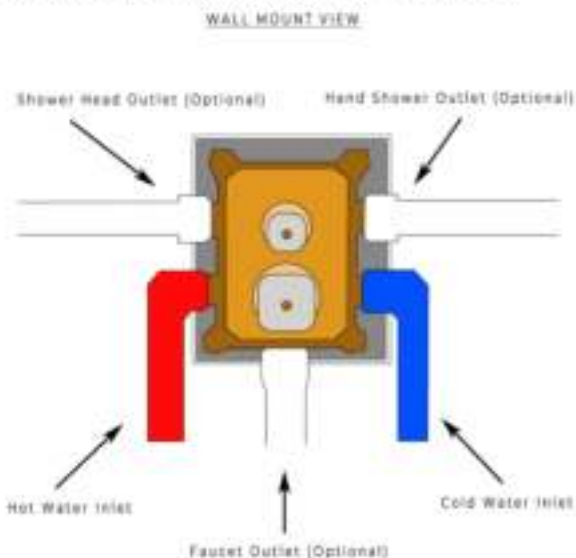
1) Bevestig de douchekraan met schroeven in de muur. Gebruik een waterpas om ervoor te zorgen dat de klep recht en waterpas staat. (Belangrijk: Spoel de watertoevoerleidingen om vuil en vuil te verwijderen voordat u het klephuis installeert)

2) Wikkel Teflon-tape om de schroefdraad van de pijp. Sluit de warm- en koudwatertoevoerleidingen en alle wandinbouwleidingen (niet meegeleverd) naar wens aan op de klep. Draai de watertoevoer open en open de patroon om te controleren op lekken. Plaats vervolgens de beschermhoes.

3) Verwijder de beschermkap wanneer de muur afgewerkte muur is voltooid. Monteer het rozet op de douchekraan en druk deze tegen de afgewerkte muur. Installeer vervolgens de hendel en de omstelknop op de klep en draai de stelschroeven vast met de inbussleutel en plaats de indicatielknop.

Functie: Aansluitingen op lekkage controleren en functie fitting controleren. De stroom wordt automatisch omgeleid van douche-uitlaat naar bad-inlaat wanneer de kraan gesloten is.

Shower Mixer Wall Mount View Connection



Shower Mixer Connection Overview

SHOWER MIXER CONNECTION

