

## SanDisk® Solid State Drive

### Quick-Start Installation Guide



**NOTE:** This guide applies to most solid state drives; check the instructions included with your SSD for more details.

Upgrading your existing hard disk drive (HDD) to a new SanDisk Solid State Drive (SSD) is easy!

This guide provides quick instructions on how to upgrade your SATA-based desktop or notebook computer HDD to a SanDisk SSD. We also cover cloning your data from your current HDD to your new SanDisk SSD using cloning software.

Replacing your HDD with a solid state drive consists of three easy steps:

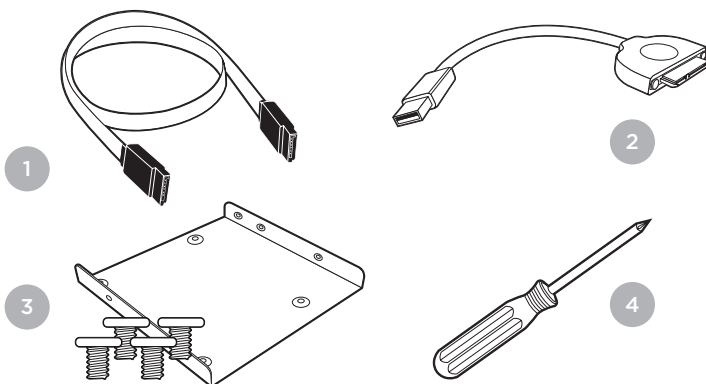
1. Connect your SanDisk SSD to your computer
2. Clone the data from your existing HDD to your new SanDisk SSD
3. Uninstall your HDD and replace it with your new SanDisk SSD

## BEFORE YOU START

- Obtain data cloning software.

There are many options available for purchase, but in this guide we will use data cloning software provided by Apricorn® to walk you through the data cloning process.

- Confirm you have the required hardware\* for your installation scenario:



1. SATA data cable  
(required for desktops computers only)
2. USB-to-SATA data cable
3. 3.5-inch mounting adapter and screws  
(required for desktop computers only)
4. Phillips screwdriver

\* Each of the above hardware components are sold separately or can be found in the SanDisk SSD Conversion Kit. See [www.sandisk.com/go-SSD](http://www.sandisk.com/go-SSD)

## SAFETY INSTRUCTIONS

Now that you have the required hardware and data cloning software, a few safety notes:

- Handle your SSD with care.
- Keep your SSD in the protective anti-static sleeve until you are ready to install it.
- Do not touch the gold connectors on your SSD.
- To minimize static electricity, touch your computer case before handling the SSD.
- Do not disassemble the SSD in any way; this will void the SanDisk Manufacturer's warranty.\*\*

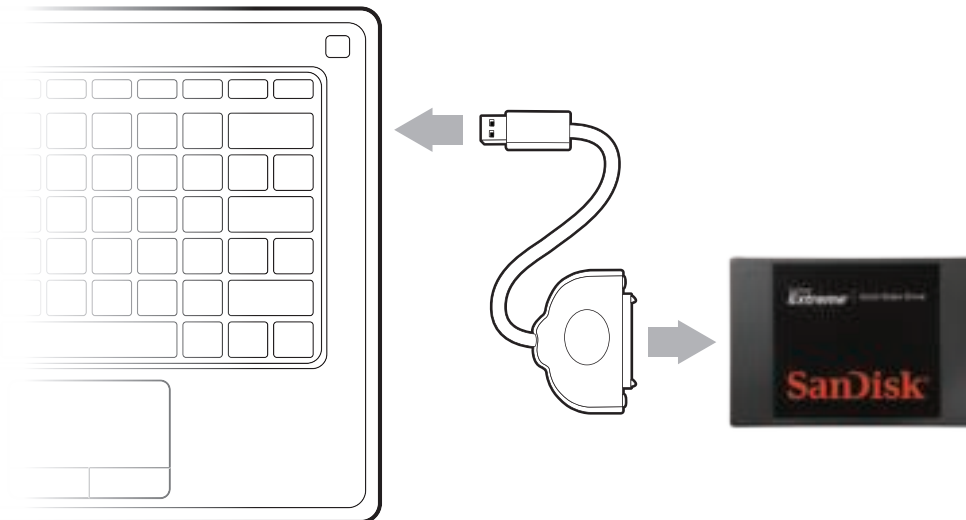
Now you're ready to begin!

## STEP 1 Connecting Your SSD to Your Computer

In the first step, you will connect your SanDisk SSD to your computer in order to clone your data.

Simply follow these directions:

1. Carefully connect SATA end of the SATA-to-USB cable to your SanDisk SSD.
2. Connect the USB end of the SATA-to-USB cable to an available USB port on your computer.
3. Wait for the operating system to recognize the SanDisk SSD.



**NOTE:** SATA devices such as SSDs may draw more power than some computers are capable of delivering. If the SanDisk SSD is not recognized, remove all other USB devices from your computer keeping only the SanDisk SSD connected. Keep these devices disconnected until the data migration is complete.

**That's it, now you're all set to clone your data!**

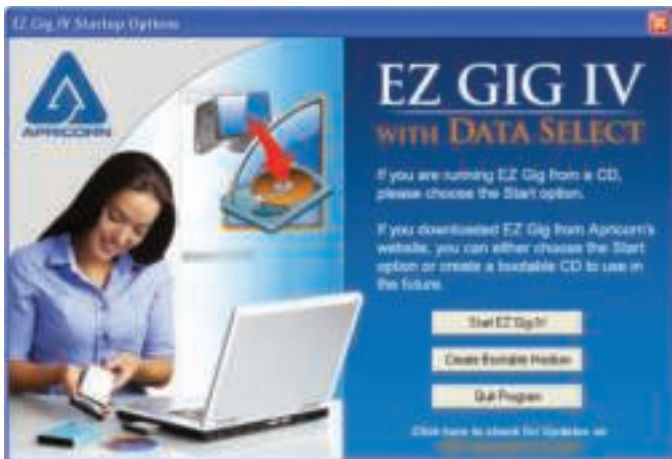
\*\* To review the warranty for this product, see [www.sandisk.com/wug](http://www.sandisk.com/wug).

## STEP 2 Clone your data

In the next step, you will clone the data from your existing HDD to your new SanDisk SSD. This step is the same for both desktop and notebook computers.

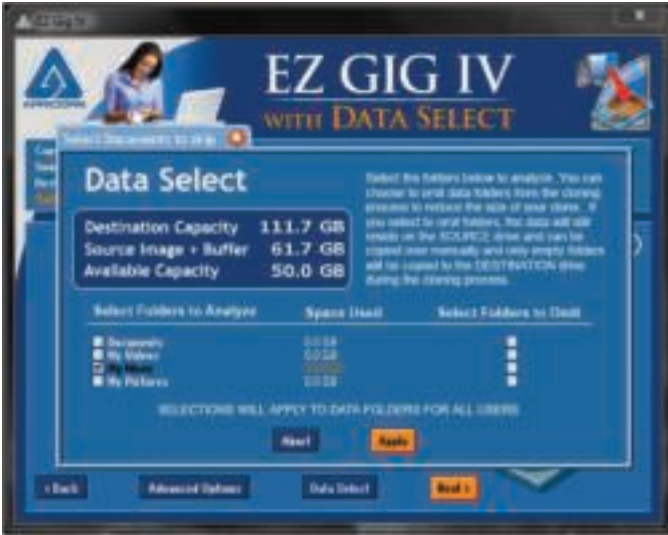
Let's get started:

1. Run your preferred data cloning software. (We are using Apricorn® EZ Gig IV with Data Select.)
2. Follow the prompts to begin the cloning process. (These may vary depending on the software used.)



3. Select your source drive. (This is usually your computer's internal drive and is denoted by the prefix "IDE".)
4. Next, select your destination drive. (This your SSD connected to your computer by the SATA-to-USB cable.)





**NOTE:** If the amount of used data space on your current HDD is larger than the capacity of your new SanDisk SSD, you must remove files or data from your current HDD to reduce its data size. Using the Apricorn® software, the “Data Select” option let’s you select file types you wish to exclude from the clone, such as photos, videos, music or documents. This is helpful when migrating from a high capacity HDD drive to a smaller capacity SSD.

5. Once you have completed the steps above, click next to begin cloning your data. This process will take some time depending on the amount of data you are cloning. You can keep track of the progress by watching the cloning status screen.

6. The cloning software will prompt you when the cloning process is complete. Once it does, shut your computer down and proceed to step three!



**NOTE:** Be sure to keep your computer’s power cable plugged in during this process.

## STEP 3 Replacing your HDD

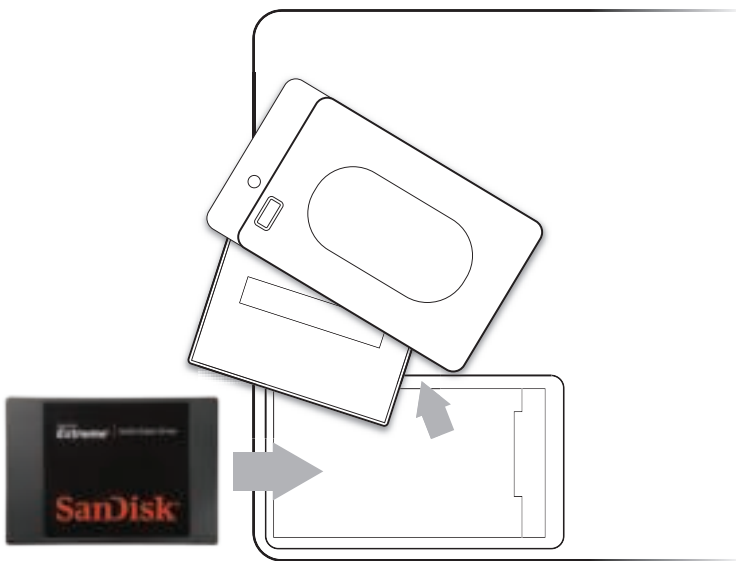
We're almost done! In this final step, you will swap your current HDD with your new SanDisk SSD. Before you begin, be sure to shut your computer down and disconnect the power cable.

Remove the battery if it's a notebook computer.

This process will differ depending on whether you are installing your new SanDisk SSD in a desktop or notebook computer. We'll cover these in two separate sections. If you're installing your SSD in a desktop computer, please skip to the "Desktop Computer SSD Installation" section below.

### Notebook Computer SSD Installation

1. Make sure your computer is powered off, the power cable is disconnected and the battery is removed.



2. Open your notebook computer's drive bay (refer to your computer's manual for instructions).
3. Remove any brackets or adapters attached to the current HDD and install them on your new SanDisk SSD in the same way as they were on your current HDD. *(Note: This step may not apply to every install, not all notebook hard disk drives have additional brackets or adapters.)*
4. Align the connector pins on your SanDisk SSD with the pins on the SATA connector in the drive bay and carefully place the SSD into the drive bay. *(Note: Be sure to firmly connect the SSD connector pins with the pins on the SATA connector in your notebook drive bay.)*

5. Replace the notebook computer's drive bay.
6. Replace your battery and power cable, then power on your notebook computer.

When your computer boots for the first time, you may see a screen indicating that the upgrade process is complete.

**...And that's it! Enjoy the speed of your new SanDisk SSD!**

**NOTE:** You may want to keep your old hard disk drive as a backup drive.

## Desktop Computer SSD Installation

To install your SSD in a desktop computer, follow these steps:

1. Make sure your computer is powered off and the power cable is disconnected.
2. Open your desktop computer case (refer to your computer's manual for instructions).
3. Locate your existing HDD.
4. Unplug the SATA data cable and SATA power cable from your existing HDD and remove the drive from the bay.
5. In most desktop computers, before installing your SSD, first you must install it into the 3.5-inch mounting adapter. In order to do this, follow the instructions that came with your mounting adapter.



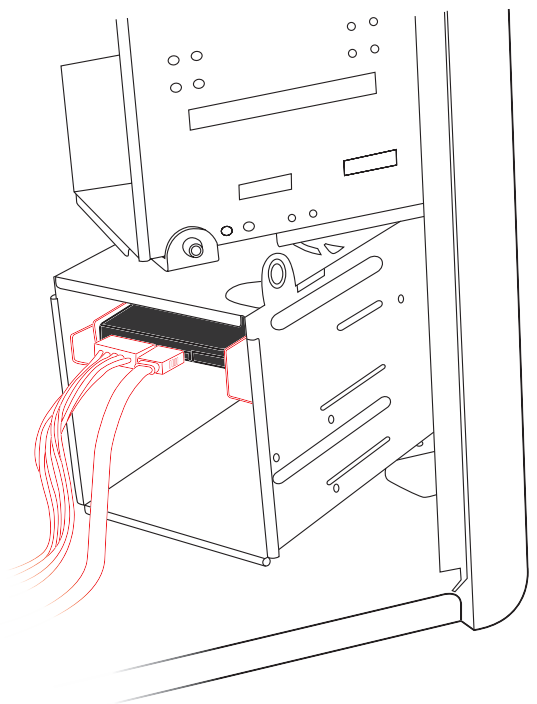
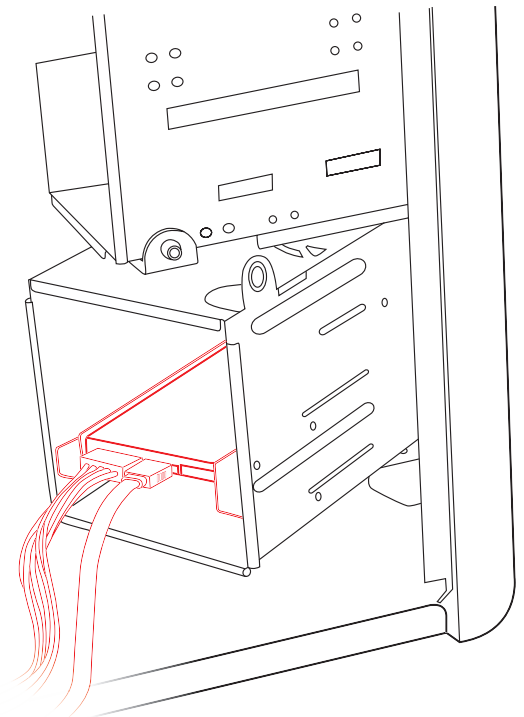
**NOTE:** If your computer has a 2.5-inch drive bay, you will not need to install the 3.5-inch mounting adapter.

6. Next install your new SanDisk SSD into your computer's drive bay and connect the SATA data cable and SATA power cable.
7. Finally, close your computer case, plug it in and power on your computer.

When your computer boots for the first time, you may see a screen indicating that the upgrade process is complete.

**...And that's it! Enjoy the speed of your new SanDisk SSD!**

**NOTE:** You may want to keep your old hard disk drive as a backup drive.



## SUPPORT

---

For more instructional installation videos and more information about SanDisk SSDs, go to:

**[www.sandisk.com/go-SSD](http://www.sandisk.com/go-SSD)**

## WARRANTY

---

More information regarding the product warranty can be obtained at:

**[www.sandisk.com/wug](http://www.sandisk.com/wug)**