

AREBOS

Demolition Hammer 1700 W

AR-HE-AB1700



Please follow all security measures in this user's manual to ensure a secure use.



Thank you for trusting in AREBOS.

Please read and save these instructions. Read through this user's manual carefully before using product. Protect yourself and others by observing all safety information, warnings and cautions. Failure to comply with instructions could result in personal injury and/or damage to product or property. Please retain instructions for future reference.

Table of Contents

Security Instructions.....	2
Explanation of the symbols	2
Recommendations	3
General Power Tool Safety Warnings.....	4
Working Area.....	4
Electrical safety	4
Personal safety	4
Power tool use and care.....	5
Service	5
For safe operation:	5
Explosive view	7
Piece List.....	8
Description	9
Application.....	9
Switching On/Off.....	9
How to use the demolition hammer	9
Changing tools.....	9
Mounting chisel.....	9
Additional handle	10
How to replace grease.....	10
Grease replacement.....	10
Maintenance	10
Technical Data	11
Storage	11
Disposal Instructions	12
Disposal of the packaging.....	12
Disposal of waste equipment.....	12
Meaning of the "dustbin"	12
Declaration of Conformity EU	13

Security Instructions

Explanation of the symbols



By means of a CE marking, it can be recognized that a product complies with the legal requirements of European legal standards and therefore may be traded within the European Community.



This product **must not** be disposed of with household waste!



Warning! Read the safety instructions carefully. Failure to follow the safety precautions could result in serious injury or damage. Keep the operating instructions in a safe place.



Insulated housing (protection class II)!



Take special care when using this article.



Warning! Wear protective gloves!



Warning! Wear safety glasses!

Recommendations

1. The tool should be connected to a power source connected to earth. If your installation needs an extension, make sure it is equipped with an earth plug.
2. Wear protection equipment (goggles, shoes, respiratory filters, gloves, etc.), avoid wearing jewelry, attach long hair and wear close-fitting clothing.
3. Unplug your tool from the mains when you are not using it, when changing tools or for maintenance.
4. Work in a clean and uncluttered workspace. Your work area should be correctly lit.
5. Store the tool in a dry place, far from sources of heat or of dangerous vapors (ideal: 10 to 15°C). Do not operate your tool near explosive or inflammable materials.
6. Work with tools in good condition and adapted to the task to undertake. This do-it-yourself equipment should be used as such and should not be overloaded. The tool should always be used with its additional handle (B) and firmly held with both hands.
7. Before each use, check the oil level, the tightening of screws, the correct mounting of the drive spindle
8. Make sure of not driving into live parts or gas or water pipes, etc. You would risk electrocution or an explosion. Detect any live or metallic parts before starting to work (for example, a live wire in a wall with a metals detector)
9. Do not try to open or dismantle the tool pour to intervene by yourself. Only a competent and

specialized service can intervene in complete safety, by using origin parts and the manufacturer's drawings.

General Power Tool Safety Warnings

- Read all safety warnings and instructions. Failure to heed warnings and follow instructions may result in electric shock, fire and/or serious injury. Keep safety warnings and instructions for future reference. The term "power tool" in the safety warnings refers to your mains-operated (corded) power tool or battery-operated (cordless) power tool.

Working Area

- Keep working area clean and well lit. Untidy and dark areas can lead to accidents.
- Do not operate power tools in potentially explosive surroundings, for example, in the presence of inflammable liquids, gases or dust. Power tools create sparks which may ignite the dust or fumes.
- Keep children and bystanders at a distance when operating a power tool. Distractions can cause you to lose control of it.

Electrical safety

- **Always check that the power supply corresponds to the voltage on the rating plate.**
- Power tool plugs must match the outlet. Never modify the plug in any way. Do not use adapter plugs with earthed power tools. Unmodified plugs and matching outlets will reduce the risk of a lethal electric shock.
- Avoid body contact with earthed surfaces such as pipes, radiators, kitchen ranges and refrigerators. There is an increased risk of a lethal electric shock if your body is earthed.
- Do not expose power tools to rain or wet conditions. If water gets inside a power tool, it will increase the risk of a lethal electric shock.
- Do not damage the cord. Never use the cord for carrying, pulling or unplugging the power tool. Keep the cord away from heat, oil, sharp edges or moving parts. Damaged or entangled cords increase the risk of a lethal electric shock.
- When operating a power tool outdoors, use an extension cable suitable for outdoor use. Using a cord suitable for outdoor use reduces the risk of a lethal electric shock.
- If operating a power tool in a damp location is unavoidable, use a power supply protected by a residual current device (RCD). Using an RCD reduces the risk of a lethal electric shock.

Personal safety

- Stay alert, watch what you are doing and use common sense when operating a power tool. Do not use a power tool when you are tired or under the influence of drugs, alcohol or medication. A moment of inattention when operating a power tool may result in serious personal injury.
- Use safety equipment. Always wear eye protection. Using safety equipment such as a dust mask, non-skid safety shoes, a hard hat, or hearing protection whenever it is needed will reduce the risk of personal injury.
- Avoid accidental starts. Ensure the switch is in the off position before inserting the plug. Carrying power tools with your finger on the switch or plugging in power tools when the switch is in the on position makes accidents more likely.
- Remove any adjusting keys or spanners before turning on the power tool. A spanner or key left attached to a rotating part of the power tool may result in personal injury.
- Do not reach out too far. Keep your feet firmly on the ground at all times. This will enable you retain control over the power tool in unexpected situations.
- Dress properly. Do not wear loose clothing or jewelry. Keep your hair, clothing and gloves away from the power tool. Loose clothes, jewelry or long hair can become entangled in the

moving parts.

- If there are devices for connecting dust extraction and collection facilities, please ensure that they are attached and used correctly. Using such devices can reduce dust-related hazards.

Power tool use and care

- Do not expect the power tool to do more than it can. Use the correct power tool for what you want to do. A power tool will achieve better results and be safer if used in the context for which it was designed.
- Do not use the power tool if the switch cannot turn it on and off. A power tool with a broken switch is dangerous and must be repaired.
- Disconnect the plug from the power source before making adjustments, changing accessories, or storing power tools. Such preventive safety measures reduce the risk of starting the power tool accidentally.
- Store power tools, when not in use, out of the reach of children and do not allow people who are not familiar with the power tool or these instructions to operate it. Power tools are potentially dangerous in the hands of untrained users.
- Maintenance. Check for misalignment or jammed moving parts, breakages or any other feature that might affect the operation of the power tool. If it is damaged, the power tool must be repaired. Many accidents are caused by using poorly maintained power tools.
- Keep cutting tools sharp and clean. Properly maintained cutting tools with sharp cutting edges are less likely to jam and are easier to control.
- Use the power tool, accessories and cutting tools, etc., in accordance with these instructions and in the manner intended for the particular type of power tool, taking into account the working conditions and the work which needs to be done. Using a power tool in ways for which it was not intended can lead to potentially hazardous situations.

Service

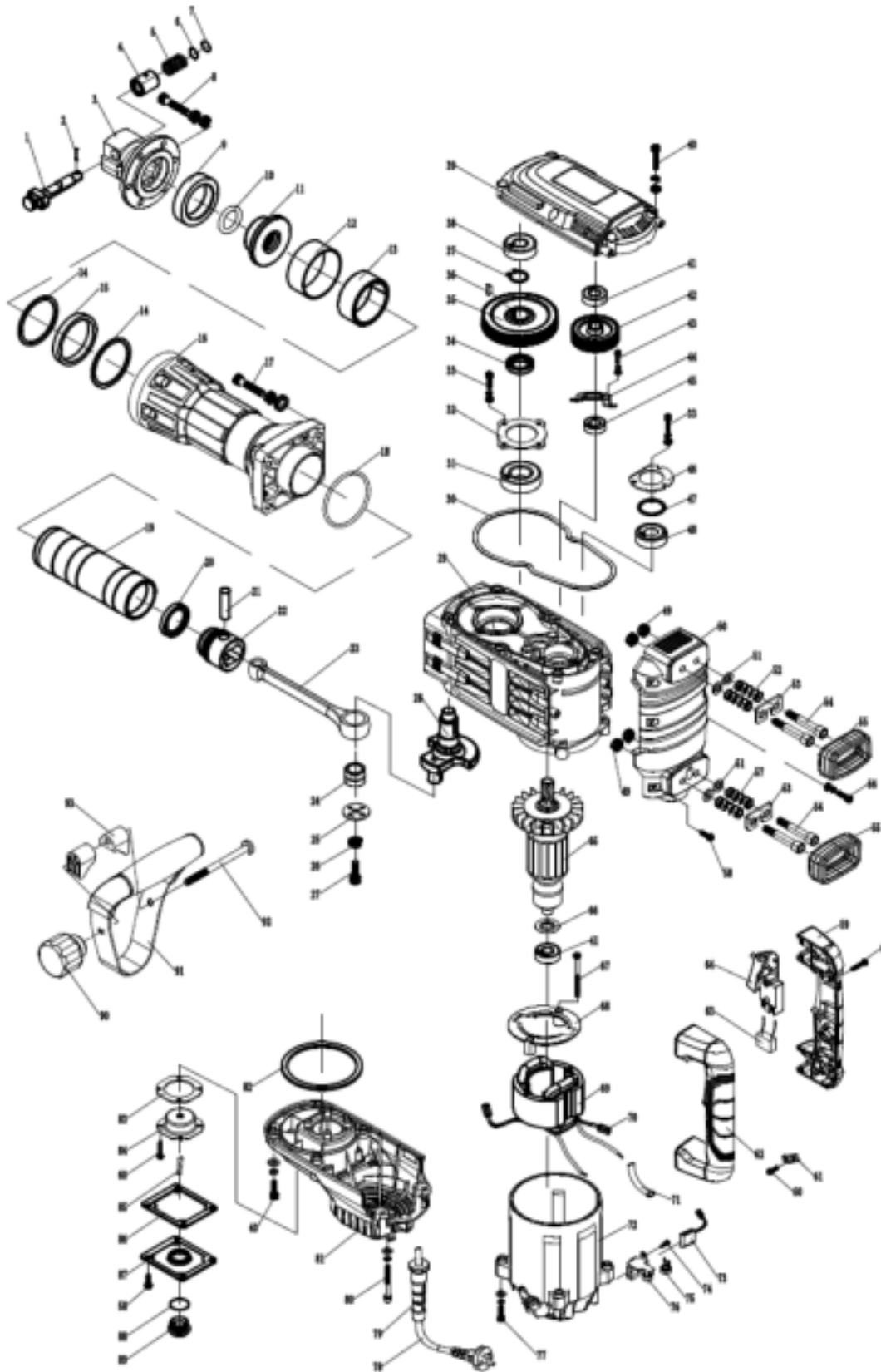
- Your power tool should be serviced by a qualified specialist using only standard spare parts. This will ensure that it meets the required safety standards.

For safe operation:

- We recommend that you take appropriate measures for the protection of hearing if the sound pressure of 85 dB (A) is exceeded.
- Keep the work area clean. Cluttered areas and benches invite injuries.
- Consider work area environment. Do not expose power tools to rain and do not use power tools in damp or wet locations. Keep the work area well lit. Do not use power tools where there is a risk to cause fire or explosion.
- Guard against electric shock. Avoid body contact where possible with earthed or grounded surfaces (e.g. pipes, radiators, ranges, refrigerators).
- Keep children away. Do not let visitors touch the tool or extension cord. All visitors should be kept away from work area.
- Store Idle tools. When not in use, tools should be stored in a dry, high or locked place, out of reach of children.
- Do not force the tool. It will do the job better and more safely at the rate for which it was intended.
- Use the right tool. Do not force small tools or attachments to do the job of a heavy-duty tool. Do not use tools for purposes not intended, for example, do not use circular saw to cut tree limbs or logs.
- Dress properly. Do not wear loose clothing or jewelry as they can be caught in moving parts. Rubber gloves and non-skid footwear are recommended when working outdoors. Wear

- protective hair covering to contain long hair.
- Use safety glasses. Use a face or dust mask as well if the operation is dusty or if using in enclosed spaces.
 - Do not abuse the cord. Never carry the tool by its cord or yank it to disconnect it from the socket. Keep the cord away from heat, oil and sharp edges.
 - Secure your work. Use clamps or a vice to hold your work. It is safer than using your hand and it frees both hands to operate tool.
 - Do not overreach. Keep proper footing and balance at all times.
 - Maintain tools with care. Keep cutting tools sharp and clean for better and safer performance. Follow instructions for lubricating and changing accessories. Inspect tool cords periodically and if damaged have repaired by an authorized service facility. Inspect extension cords periodically and replace if damaged. Keep handles dry, clean and free from oil and grease.
 - Disconnect tools. Disconnect when not in use, before servicing and when changing accessories such as blades, bits and cutters.
 - Remove adjusting keys and wrenches. From the habit of checking to see that keys and adjusting wrenches are removed from the tool and replaced in the storage area before switching on.
 - Avoid unintentional starting. Do not carry a plugged-in tool with a finger on the switch. Ensure the switch is off when plugging in.
 - Use outdoor extension cords. When a tool is used outdoors, use only extension cords intended for outdoor use and so marked.
 - Stay alert. Watch what you are doing. Use common sense. Do not operate tools when you are tired.
 - Connect dust extraction equipment. If devices are provided for the connection of dust extraction and collection facilities, ensure these are connected and properly used, especially in confined areas.
 - Check damaged parts. Before further use of the tool, a guard or other part that is damaged should be carefully checked to determine whether it will operate properly and perform its intended function. Check for alignment of moving parts, free running of moving parts, breakage of parts, mounting and any other conditions that may affect its operation. A guard or other part that is damaged should be properly repaired or replaced by an authorized service center unless otherwise indicated in this instruction manual. Have defective switches replaced by an authorized service center. Do not use the tool if the switch does not turn it on and off.
 - **Warning!** The use of any accessory or attachment, other than recommended in this instruction manual, may present a risk of personal injury.
 - Have your tool repaired by a qualified person. This electrical tool is in accordance with the relevant safety requirements. Repairs should only be carried out by qualified persons using original spare parts, otherwise this may result in considerable danger to the user.

Explosive view



Piece List

1	Stop Lever	48	Bearing Cover 6203
2	Pin 4X18	49	Hex.Socket Hd.Bolt M8
3	Block Blessing	50	handle set 107MA
4	Spring Case 23X28	51	Washer 8
5	Spring17.2x1.59x26.5	52	Damping spring $\Phi 10.5 \times \Phi 1.6 \times 28 \times 6$
6	Washer12.4*17.6*2.6	53	Damping plate
7	Washer 18*12.1*1.5	54	Damping screw M8x43
8	Nylock Hex.Socket Hd.Bolt M10X35	55	Damping sleeve 107MA
9	Damper 47.5X66.5X14.3	56	Nylock Hex.Socket Hd.Bolt M5X16
10	O-Ring 23.6X5	57	Damping spring $\Phi 10.5 \times \Phi 1.6 \times 28 \times 6$
11	Shank Sleeve	58	Self-tapping Screw ST4.8X18
12	Opening set	59	Damping right handle
13	Ring 64.5*67.5*27.5	60	Self-tapping Screw ST3.9X16
14	Washer 57.5X68.4X2	61	Cable Plate
15	Damper 58X68X9.3	62	Capacitance
16	Cylinder House	63	Damping lift handle
17	Nylock Hex.Socket Hd.Bolt M8X40	64	Switch
18	O-Ring 60X2	65	Rotor
19	Cylinder	66	Dust cover 12.1*31*0.5
20	O-Ring	67	Self-tapping Screw ST4.8X65
21	Pin 12X44	68	Fan guide 107H
22	Positon	69	Stator
23	Connecting Rod	70	Spring 6.3
24	Needle Bearing NK18/20	71	Glass casing
25	Needle Bearing board 34X2.3	72	Plastic House
26	Washer 8	73	Brush 7*17*24 107H
27	Nylock Hex.Socket Hd.Bolt M8*30	74	Self-tapping Screw ST3.9X12
28	Crankshaft	75	Coil spring
29	Rotor housing	76	Brush frame 107H
30	O-Ring\107H、NBR	77	Nylock Hex.Socket Hd.Bolt M5X35
31	Bearing 6205	78	Cable
32	Bearing Cover	79	Cable sheath
33	Nylock Hex.Socket Hd.Bolt M5X22	80	Nylock Hex.Socket Hd.Bolt M5X45
34	Ring 22.5X37X7.5	81	Back Cover 107MA
35	Big Gear	82	Oil seal ring 80D
36	Key 4X6.5X16	83	Oil core rack seal ring 65A
37	Ring 22	84	Oil core Holder
38	Bearing 6302	85	Oil core Holder Seal
39	Gear Cover	86	Washer
40	Nylock Hex.Socket Hd.Bolt M6X25	87	Oil Box Cover
41	Bearing 6201	88	O-Ring
42	Gear	89	Oil Gauge
43	Nylock Hex.Socket Hd.Bolt M4X14	90	button 75
44	Bearing Cover 26KA	91	Hand Grip
45	Bearing 6001RZ	92	Nylock Hex.Socket Hd.Bolt M8X110
46	6203Bearing Cover	93	Handle holder

47	Washer 29.5X39.5X2		
----	--------------------	--	--

Description

1. On-Off switch
2. Auxiliary handle
3. Main handle
4. Locking bolt
5. Tool chuck
6. Inspection window/ Oil filter opening
7. Wrench
8. Lock knob of auxiliary handle

Application

Switching On/Off

Plug the cord set into power socket.

- Switching on: Press the ON/OFF switch trigger (1).
- Switching off: Release ON/OFF switch trigger (1).

How to use the demolition hammer

1. After placing the tip of the tool on concrete surface, switch ON.
2. By utilizing the weight of the machine and by firmly holding the demolition hammer with both hands, one can effectively control the subsequent recoil motion.
3. Proceed at a moderate work-rate, the use of too much force will impair efficiency.

CAUTION: After long time of use, the cylinder case becomes hot. Therefore, be careful not to burn your hands!

WARNING: Don't apply big pressure to the machine. The hammer mechanism is activated by applying a slight pressure on the tool when the chisel bit is in contact with the work-piece.

In some cases, it is necessary to punch up the bit against the crushing position forcibly in order to begin the striking strokes. This is not due to malfunction of the tool; it means that the safe guard mechanism against no-load striking is working.

Changing tools

Unplug the tool from the power supply, only use drill spindles compatible with the tool.

Mounting chisel

CAUTION: Be sure to switch power OFF and disconnect the plug to avoid serious trouble.

Inserting the tool

- Clean the tool before fitting it and apply a thin coating of grease to the tool shaft.
- Pull out the locking bolt (4) as far as possible, turn it through 180° and release it.
- Insert the tool into the tool mounting (5) and push it in as far as possible.

- Pull out the locking bolt (4) again, turn it through 180° in the opposite direction and release it.
- Check the lock by pulling the tool.

Remove/replace the tool

- Proceed in reverse order to mounting.
- **WARNING:** Accessories can be hot after use. Don't touch the tip of accessory by hand! Please always use protective gloves to remove the accessory.

Additional handle

- **For safety reasons you must only use the demolition hammer with the additional handle.**
- The additional handle (2) enables you to achieve better stability while using the demolition hammer.
- The additional handle can be turned into any required position. To do so, undo the lock knob (8) of auxiliary handle. Then turn the handle into the most comfortable working position and tighten the lock knob (8) again.
- **Important:** To avoid danger, the machine must only be held using the two handles (2-3). Otherwise you may suffer an electric shock if you chisel into cables.

How to replace grease

Check the grease level before using the machine (every 1/3 month is recommended).

- Place the machine on the floor with the tool chuck (5), pointing downwards.
- The grease must be at least 3 mm above the bottom of the inspection window (6). The grease should be changed after around 40-50 hours of use.
Recommended filling amount: 25g of grease.

Grease replacement

- Switch off the machine and disconnect the plug from the socket.
- Undo the hexagonal head screw with the inspection window (6) using the wrench (7) and wipe off the old grease inside.
- Add new grease (approx. 25g) through the filler opening until the level reaches the required level. Tighten the hexagonal screw again.

Maintenance

- Check every day the tightening of screws and nuts. Except the procedures described in this manual, this tool needs no specific maintenance. The repair of the tool's inner components is of the competence of specialists. The cleaning of plastic parts is done with a soft damp cloth and a bit of mild soap. Never submerge the tool and do not use detergents, alcohol, spirit, etc... For an in-depth cleaning, please consult the after-sales department.
- **WARNING:** For maintenance and cleaning, always remove the plug from the electric power supply. Never use water or other liquids to clean electric parts.

Technical Data

Model	AR-HE-AB1700
Max impact rate [1/min.]	1900 Bpm
Impact Energy [Joule]	60J
Vibration level [m/s ²]	17.787 m/s ²
Motor V/Hz	230-240V/50 Hz
Power consumption P1 (W)	1700W
Protection Class	Class II
Type of Protection	IPX0
Connection type	SDS-HEX
Sound power level LWA	105db (A)
Sound pressure level LPA	84.02db (A)
Uncertainty	1.5 m/s ²
Point chisel size	∅ 30 x L410
Flat chisel size	∅ 30 x L410
Cable length	5m
Material of machine casing	Alu
Dimensions L x W x H	650 mm x 255 mm x 160 mm
Net weight	16 kg

Storage

- Thoroughly clean the whole machine and its accessories.
- Store it out of the reach of children, in a stable and secure position, in a cool and dry place, avoid too high and too low temperatures.
- Protect it from exposure to direct sunlight. Keep it in the dark, if possible.
- Don't keep it in plastic bags to avoid humidity build-up.

Disposal Instructions

Disposal of the packaging

- Please make reference to the guidelines and standards for appropriate disposal of the packaging valid in your region. In part, the package may consist of plastic bags - watch this respect, with special care to ensure that this is out of the reach of children. There is a risk of suffocation!

Disposal of waste equipment

- Equipment must be disposed of in accordance with the rules and regulations of the local waste disposal.

Meaning of the “dustbin”



Protect our environment; electrical appliances do not belong in household waste. Use the provided for the disposal of electrical equipment collection points and enter your electrical and electronic equipment that you no longer use. They help ensure that the potential effects of incorrect disposal on the environment and human health to be avoided. So, do your part to recycle, recycling and other forms of recovery of waste electrical and electronic equipment. Information on where the devices are disposed of, please contact your local authorities or local Governments.

Our customer service number: +49 (0) 931-45232700

Declaration of Conformity EU

We,

Canbolat Vertriebs GmbH, Gneisenaustraße 10--11, 97074 Würzburg, Germany

Hereby declare that the product named below, seen its design and construction as well as according to our sales, has been complied with the relevant and basic health and safety EU-requirements.

Name of the product: AREBOS Demolition Hammer 1700 W

Article number: 4260627423996

Model number: AR-HE-AB1700

If this product is modified without our consent, this declaration loses its warranty.

Verified acc. to:

Machine Directive 2006/42/EC

Electromagnetic Compatibility Directive 2014/30/EU

Standard EU:

EN 60745-1: 2009+A11: 2010

EN 60745-2-6: 2010

EN 55014-1:2017

EN 55014-2:2015

EN 61000-3-2:2014

EN 61000-3-11:2000

Date/Manufacturer Signature/Location:

Würzburg, 28.04.2020



Identification of the signatory:

Korhan Canbolat, head of the company

Authorised representative for the technical documentation:

Korhan Canbolat

Office address:

Canbolat Vertriebs GmbH

Gneisenaustraße 10-11

97074 Würzburg

Return address can be found in the imprint: <https://www.arebos.de/impressum/>

VAT identification number: DE 263752326

Court of the Commercial Register is Würzburg, HRB 10082

WEEE Reg.-No. DE 61617071