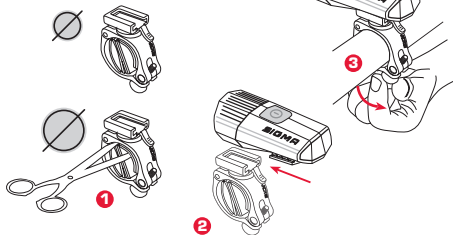
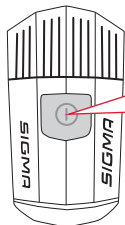
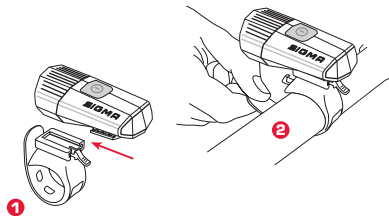


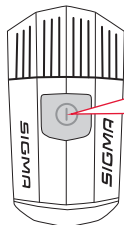
SCREW-BRACKET ERSATZHALTERUNG/
SPARE SCREW-BRACKET MOUNT



SILIKON-ERSATZHALTERUNG (OPTIONAL)/
SILICONE BRACKET (OPTIONAL)



- 2 x click = on/power
- + 1 x click = standard
- + 1 x click = eco
- + 1 x click = flashing
- + 1 x click = fast-flashing
- + 1 x click = SOS flashing
- + 1 x click 5 sec. = off



Battery control



> 75%

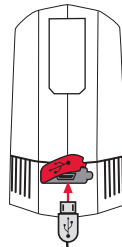


25-75%



< 25%

Ladevorgang
Charging
Charge



ca. 2 h

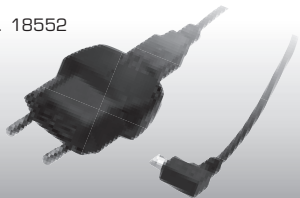


Achten Sie bitte darauf, dass die rotmarkierte Abdichtung stets korrekt verschlossen ist. / Please always keep the silicone plug closed after charging.

Micro
USB

(charger not incl.)

Art.-Nr. 18552



LADEGERÄT + MICRO USB KABEL
CHARGER + CHARGING CABLE MICRO-USB

Art.-Nr. 18553



MICRO USB KABEL
CHARGING CABLE MICRO-USB

Art.-Nr. 00460



SCREW-BRACKET ERSATZHALTERUNG
SPARE SCREW-BRACKET MOUNT

Art.-Nr. 00145



SILIKON-ERSATZHALTERUNG
SILICONE BRACKET



USB CHARGING

USB CABLE INSIDE

BUSTER 100

SIGMA-ELEKTRO GmbH

Dr. -Julius-Leber- Straße 15
D-67433 Neustadt / Weinstraße

SIGMA SPORT USA

3487 Swenson Ave.
St. Charles, IL 60174, U.S.A.

SIGMA SPORT ASIA

4F, No.192, Zhonggong 2nd Rd.,
Xitun Dist., Taichung City 407, Taiwan

