

NVS-IPC-05-BAT

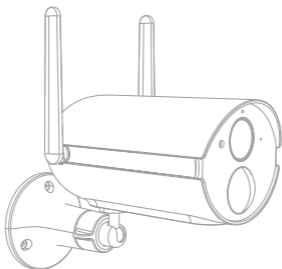
ORIGINALITY DESIGN SMART - AND BEAUTIFUL



BATTERY CAM



QUICK GUIDE



What's in the box

Please consult this checklist for all parts.



IPC-05-BAT



Bracket



Screws



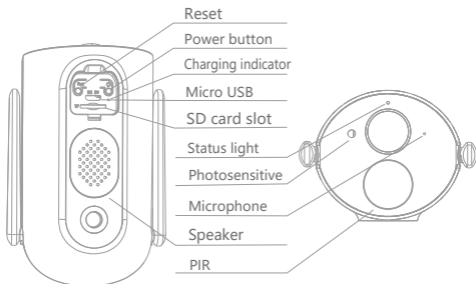
Power adapter



USB cable



User manual



Power port DC 5V±10%

Power on/off Press power button for 3 seconds to turn on/off the camera

Status light

- Solid red light on: the camera is turning on or malfunctional
- Blinking red light: awaiting WiFi connection (slowly blinking)
connecting the WiFi (quickly blinking)
- Blinking blue light: currently connecting
- Solid blue light on: the camera runs correctly

SD card slot Support local SD card storage (Max.128G)

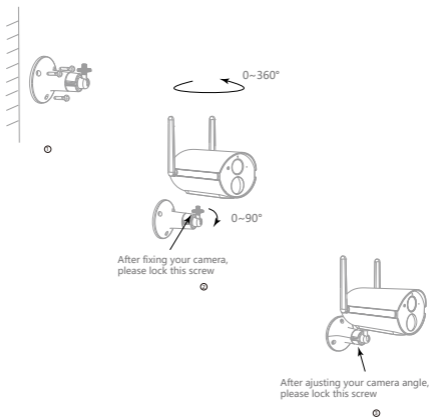
Reset Press and hold on for 5 seconds to reset the camera

Charging indicator

- Solid red indicator on: battery is charging
- Solid blue indicator on: charging completed

Battery capacity 13500mAh (three 21700 lithium-ion batteries)

Mode Bracket Installation



1. Fix the bracket on the wall
2. Install the camera in the bracket and lock it with the screw

Download

Smart Life is available for both iOS and Android OS. Search the name 'Smart Life' in App Store or Android Market, or scan the QR-Code to download the App.

Support



iOS



Android



Download App(iOS&Android)

Set up router

The router supports the 2.4GHz WiFi (doesn't support the 5GHz).Before connecting to the WiFi network,please set the parameters of the router, and record the SSID and password of your WiFi.



2.4GHz

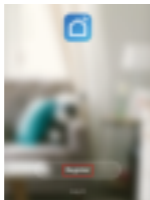


5GHz



Registration process

Step 1 Open the Smart Life App, click "Register", read the "Privacy Policy" and click "Agree".



Step 2 Input a legal and valid Mobile number or Email address and click "Continue". Input Verification Code, then log in the app.

Register

Country (+)

Phone number (E164)

Continue

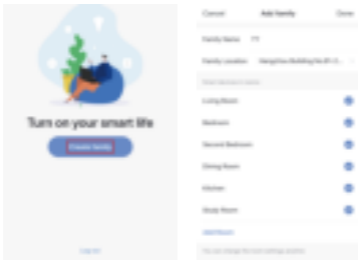
Agree with Service Agreement and Privacy Policy

Verification Code

Verification Code (6 digits)

Verification code has been sent to your registered phone number.

- 1 Open the Smart Life App, click "Create family", and you can customize the Family name and related settings.



- 2 Continue to click "Security & Sensor" >> "Smart Camera", and then choose "Add Device" or "+", ready to add camera.



- 3 In "Add Device" this interface, continue to click "next step", and then you should input your WiFi's passwords.

Add Device

Place the device on and make sure the indicator is flashing quickly or a prompt tone is heard



Help

NEXT STEP

Enter Wi-Fi Password

Only support 2.4GHz Wi-Fi network

SSID

OK

Note:

- 1) Camera only supports 2.4GHz WiFi network.
- 2) The number of bits in the ssid and passwords of the router should not exceed 24 digits.

- 4 In this interface, you should scan the QR code in your phone with the camera, when the camera comes out "dong dong dong". And you can complete the configuration about 30s.



- 5 When connecting, you should make sure your router, mobile, and camera are as close as possible. When camera added successfully, click " " you could also DIY the camera's name.

Connecting

Make sure your router, mobile, and device are as close as possible.



- ✓ Device found
- ✓ Register device to the smart cloud
- ✓ Initializing device

Device added successfully



In "Smart Camera" interface,click " + ",you can set the camera common functions.



Q: The device cannot be previewed properly?

A: Check whether the network is normal, you can place the camera close to the router, and if not, it is recommended to reset the device and add it again.

Q: Why is it still in the list of devices after resetting?

A: The reset device only resets the network configuration of the camera, but cannot change the configuration on the App, remove the camera, and must be deleted by the App.

Q: How to cut the camera network to another router?

A: First remove and reset the device on the App and then configure the device again by the App.

Q: Why doesn't the device identify the SD card?

A: It is recommended to plug in SD card after power cut. Confirm whether the SD card is normally available and the format is FAT32. And the TF card can't be identified when the internet environment is not good.

Q: Why I can't get the notifications with my cell phone App?

A: Please confirm that the App has been running on the phone, and the relevant reminder function has been opened; Message notification and authority confirmation in the mobile phone system have been opened.

Functions

Remote wake-up

The camera will be in a sleep mode to save power; you can have a preview in App.

Full-duplex audio

You can see and hear the visitor in your App from the camera.

PIR

When the camera detects someone stopping by, it sends an alarm message to your cell phone.

Low battery alarm

When the battery power is lower than your set, the App will send a notification to your mobile phone.

Record

Using SD card or opening the Cloud-Storage Service, to keep recording for every moment.

Day & Night

Powerful night vision means no interruptions, even in complete darkness.



Daytime



Night