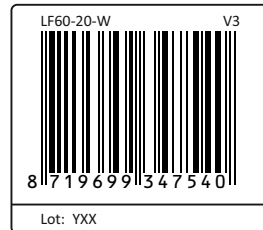
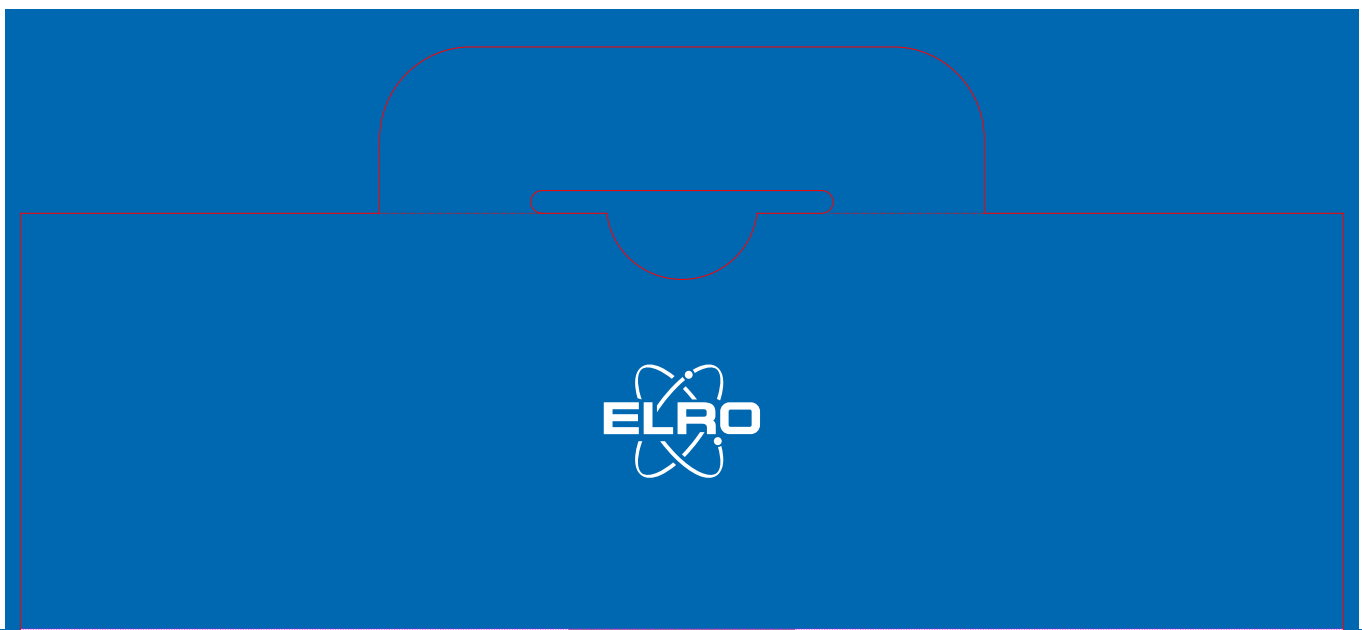


ELRO item(s)	LF60-20-W
Revision nr.	V3
Revision date	03-12-2021
Material	300g carton board (grey bottom & white surface)
Option 1	
Option 2	F corrugation in the core (middle)
Option 3	
Size (mm)	185 (h) x 175 (w) x 55 (d)
Contact	laurens@cosaconnects.eu
Lot: -----	YXX = starting date of production Y = last digit of year / X = week nr. x 2
Example	Production starts in 2018 week 2, lot number will be 804 / 8 = last digit of 2018 and / 04 = week 2 x 2
Contact 1	demmy@green-king.cn
Contact 2	

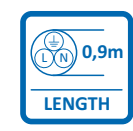


LF60-20-W_KMF203CW-20W EAN Pieces
 Consumer package 8719699347540 1
 Inner Carton 8719699341401
 Outer Carton 8719699341531



LF60-20-W

Home is not a place, it's a feeling



EN Energy efficient 20W high power LED 1600 lumen

- Ultra flat, modern design
- With class I security glass
- IP54 Waterproof

DE Energieeffiziente 20-W-Hochleistungs-LED 1600 Lumen

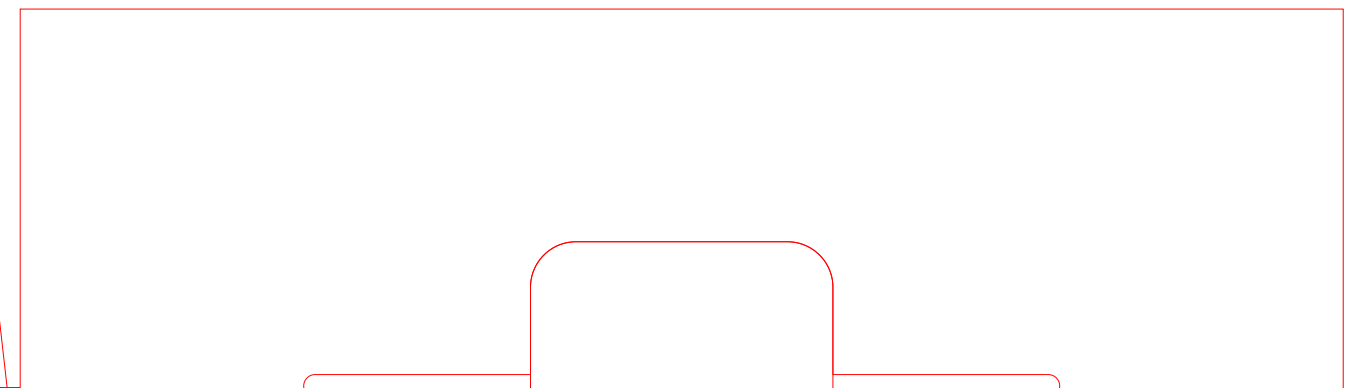
- Ultraflaches, modernes Design
- Mit Sicherheitsglas der Klasse I
- IP54 Wasserdicht

NL Energie-efficiënte 20W hoog vermogen LED 1600 lumen

- Ultraflat, modern ontwerp
- Met klasse I veiligheidsglas
- IP54 waterdicht

EN LED haute puissance 20W à haut rendement énergétique 1600 lumen

- Design ultra plat et moderne
- Avec verre de sécurité de classe I
- Étanchéité IP54



LED FLOODLIGHT 20 WATT



EN SPECIFICATIONS	DE TECHNISCHE DATEN	NL SPECIFICATIE	FR SPECIFICATIONS	ELRO_LF60-20-W
Power	Leistung	Vermogen	Puissance	AC 220V-240V, 50Hz
Power Cord	Netzkabel	Stroomdraad	Cordon d'alimentation	H05RN-F, 3G, 0,75mm ² x 90 cm
Lighting Load	Beleuchtungsbelastung	Verlichtingsbelasting	Charge d'éclairage	20W
Working Temperature	Arbeitstemperatur	Werktemperatuur	Température de fonct.	-20°C ~ 40°C (95%RH max)
Mounting Height	Montagehöhe	Montagehoogte	Hauteur de montage	1.8 ~ 2.4m
Size/Weight	Größe / Gewicht	Formaat / Gewicht	Taille poids	16 x 12 cm / 470gr.
Swivel angle	Schwenkwinkel	Draaihoek	Angle de pivotement	Vertical 90°
Lumen (lm)	Lumen (lm)	Lumen (lm)	Lumen (lm)	>1600 lm
Color Temperature(K)	Farbtemperatur (K)	Kleurtemperatuur (K)	Température de couleur (K)	6500K ± 250K
Beam Angle	Strahlwinkel	Breedtehoek	Angle de faisceau	100°
Life Span (hours)	Lebensdauer (Stunden)	Levensduur (uren)	Durée de vie (heures)	>18,000 (Hrs)
Protection Class	Schutzklasse	Beschermingsklasse	Classe de protection	Class I
Protection Degree	Schutzgrad	Beschermingsgraad	Degré de protection	IP54
Application	Anwendung	Toepassing	Application	Outdoors & Indoor Use

ELRO Europe | www.elro.eu
 Postbus 9607 - Box E800
 1006 GC Amsterdam The Netherlands

