

# i-Link

## Smart lamp with Speaker

### User Manual

This product has a unique and exclusive two-in-one design - the smart LED lamp and Bluetooth stereo audio speaker. Bluetooth 4.0+EDR (enhanced data rate) and purity and definition of particular voice based on DSP technology. Wish you have infinite joy from the combination of light and music.

- Change color, warm/cool and brightness as you need;
- Timer setting: auto light, auto music and alarm clock;
- Mood lighting and music rhythm, enjoy music anywhere;
- Sound effect setting: Pop, Classical, Jazz, Bass and Flat.



Google Play



App Store



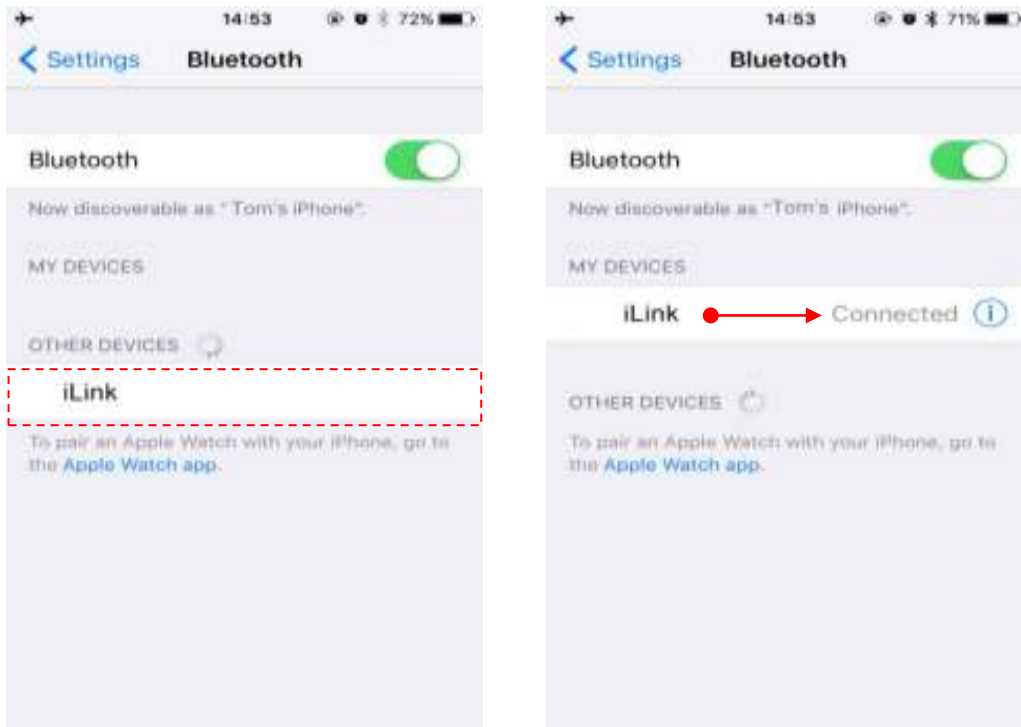
IOS&Android

Scan the **QR-Code** download **APP**.

#### I .Bluetooth Connection

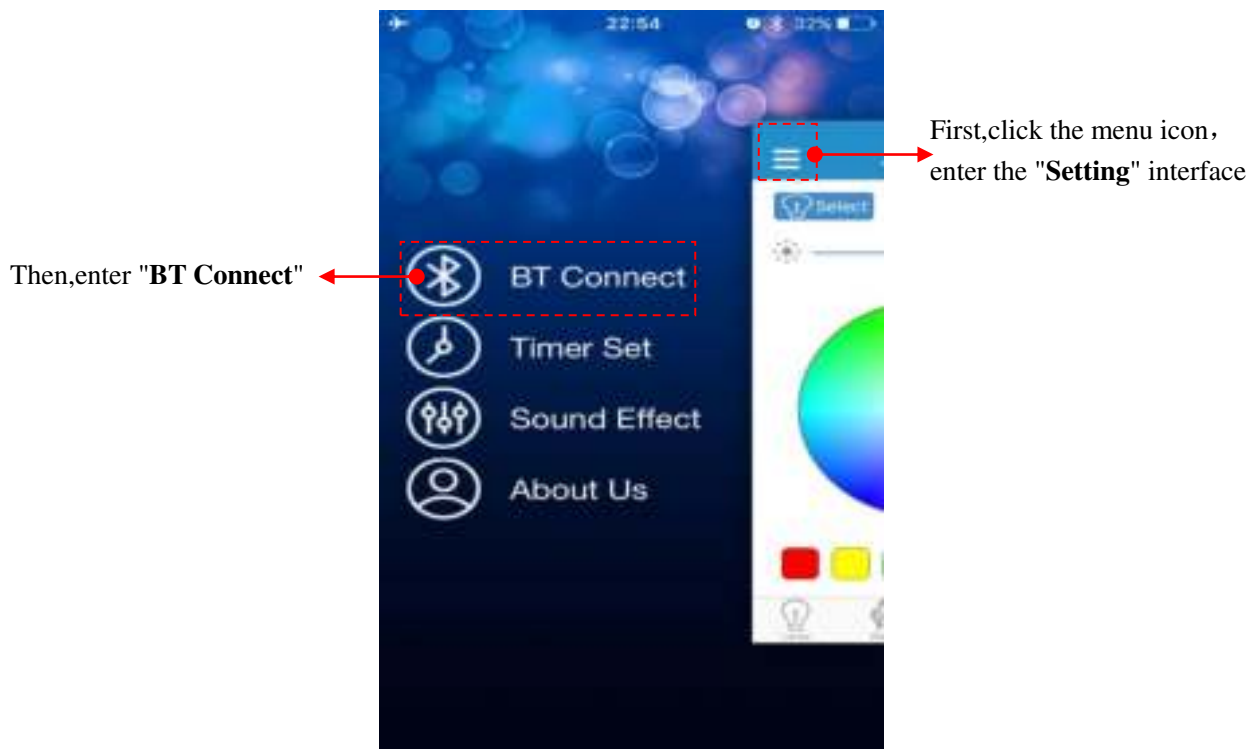
For the first time you use it or never pair with "iLink" after moving the equipment, please have it paired according to the steps below:

- i. First of all, please enter your phone's settings, open the Bluetooth, and pair with the "iLink". Enter the System Settings - Bluetooth - to discover and connect the device name "iLink". Once connected, you will hear the connection tone.



**Tips:**The next time you use, "iLink" will connect with your phone automatically(the Bluetooth is open).

ii. Open "iLink" app, enter the main interface. Click the menu icon, enter the "BT Connect", as follow:



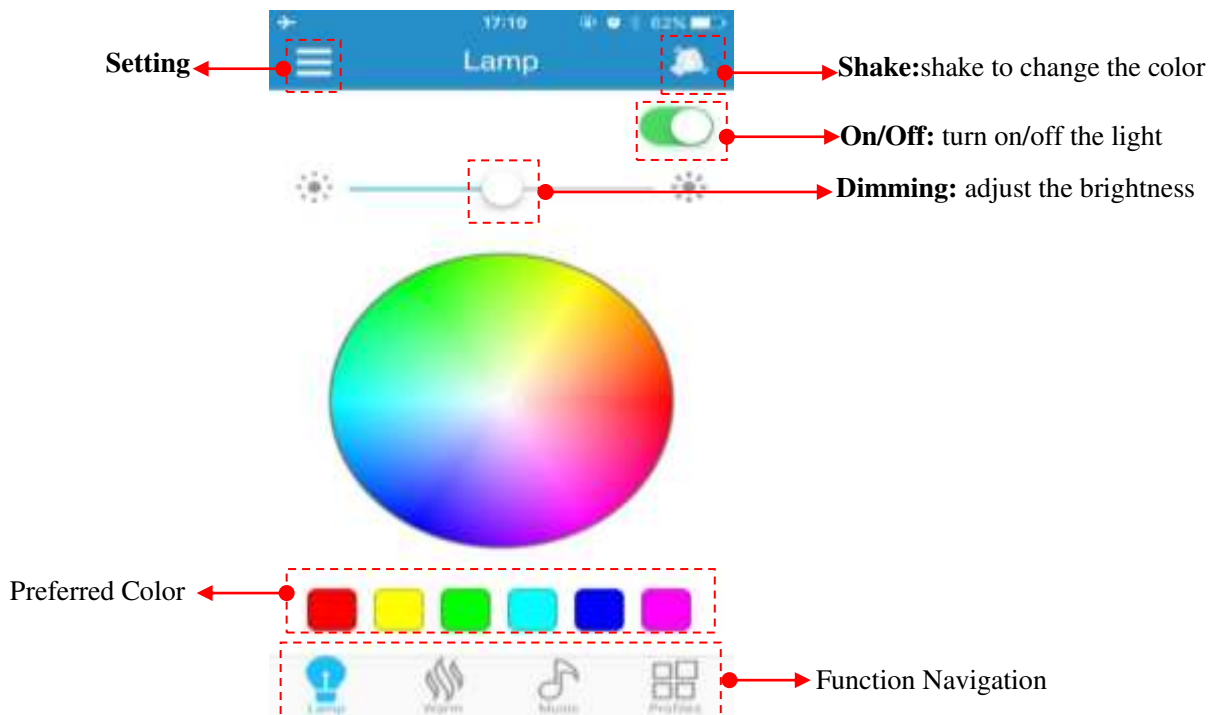
iii. "BT Connect",operate as follow:



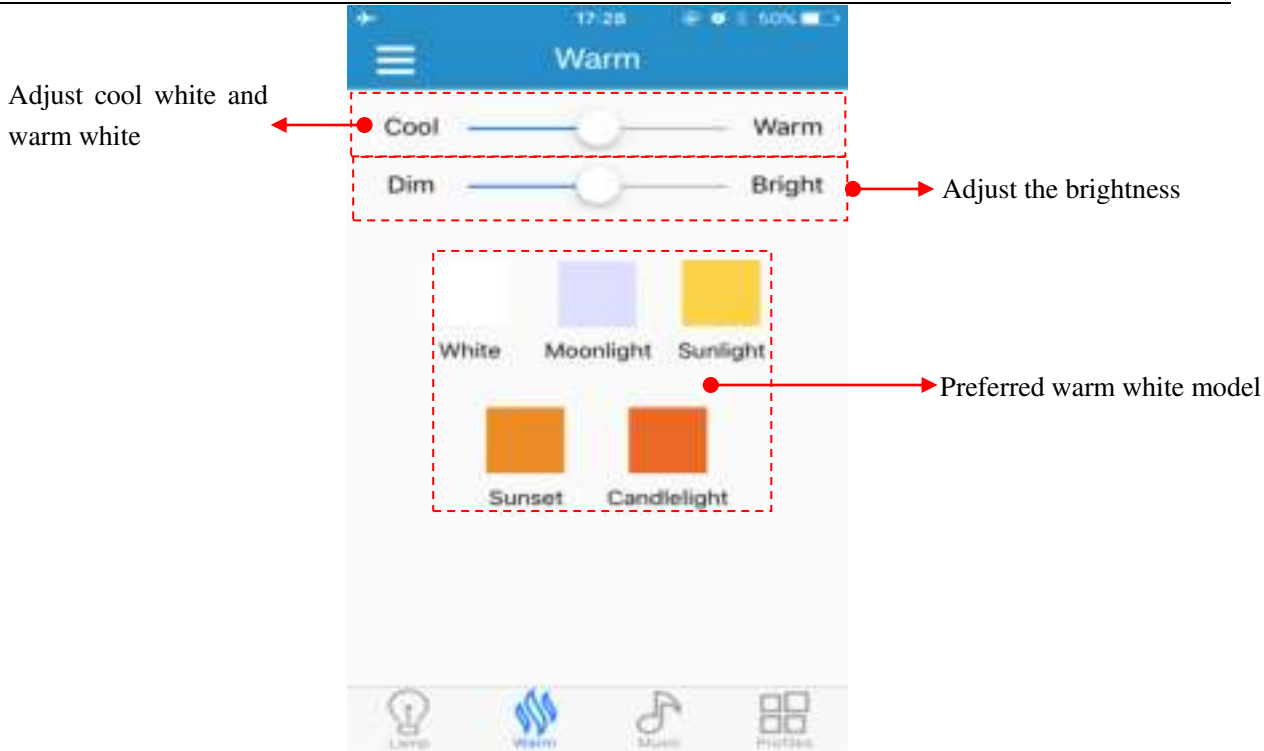
Then, you can start operate the smart lamp via the app. Enjoy the magical light and music.

## II .Main User Interface

### A. Lamp: cool white light control

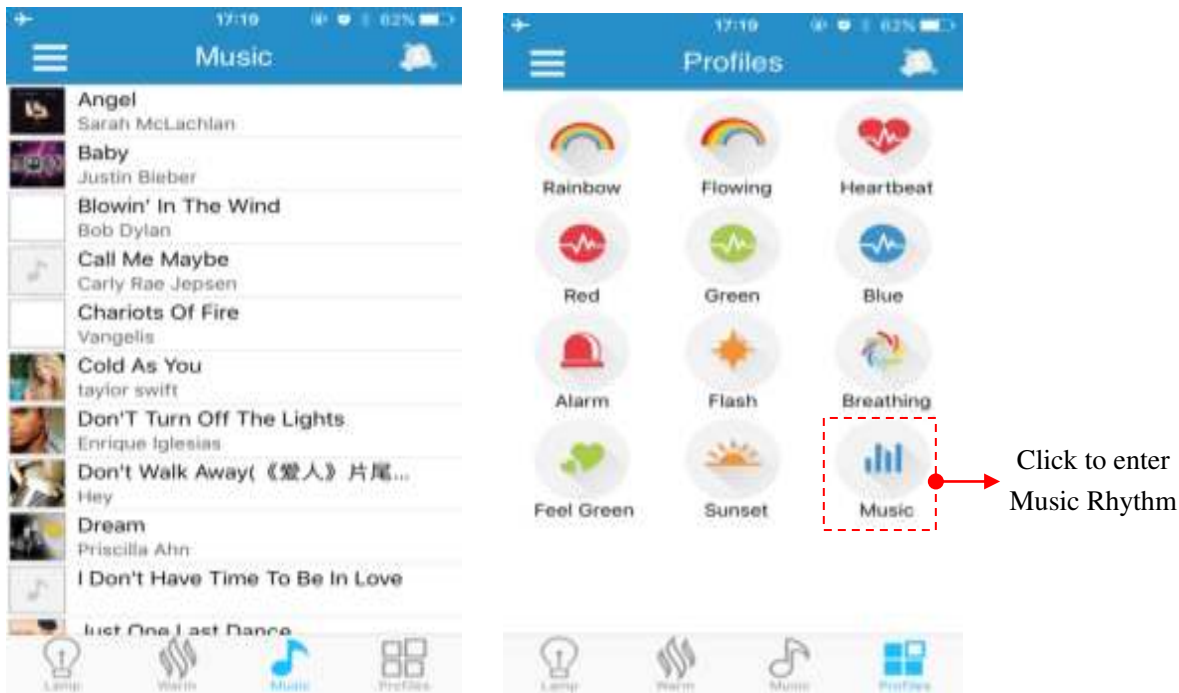


### B. Warm: warm white light control



### C. Music

When you use the lamp for the first time, please enter your phone's settings, open the Bluetooth, and pair the "iLink". Then, enjoy your favorite music. Only iTunes Player supports musical rhythm, the color flashing with the music. The third party player is not supported.

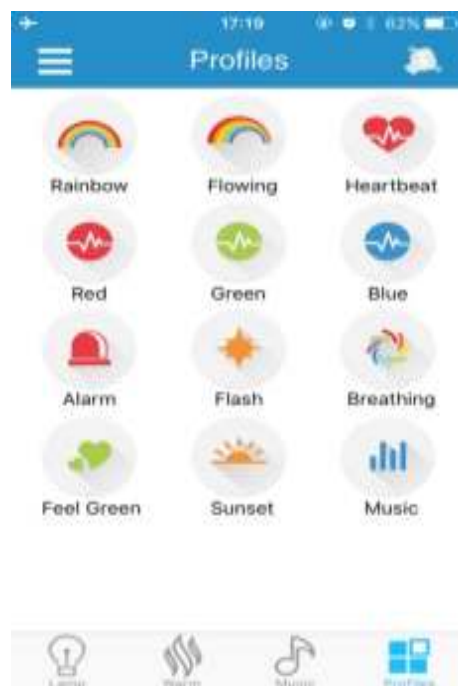


Music play interface



**Tips:** iOS system, non-iTunes music have none "Musical Rhythm" lighting effect.

#### D. Profiles



**Rainbow:** brightness and color random changing gradually as the rainbow;

**Breathing:** brightness and color changing like breath;

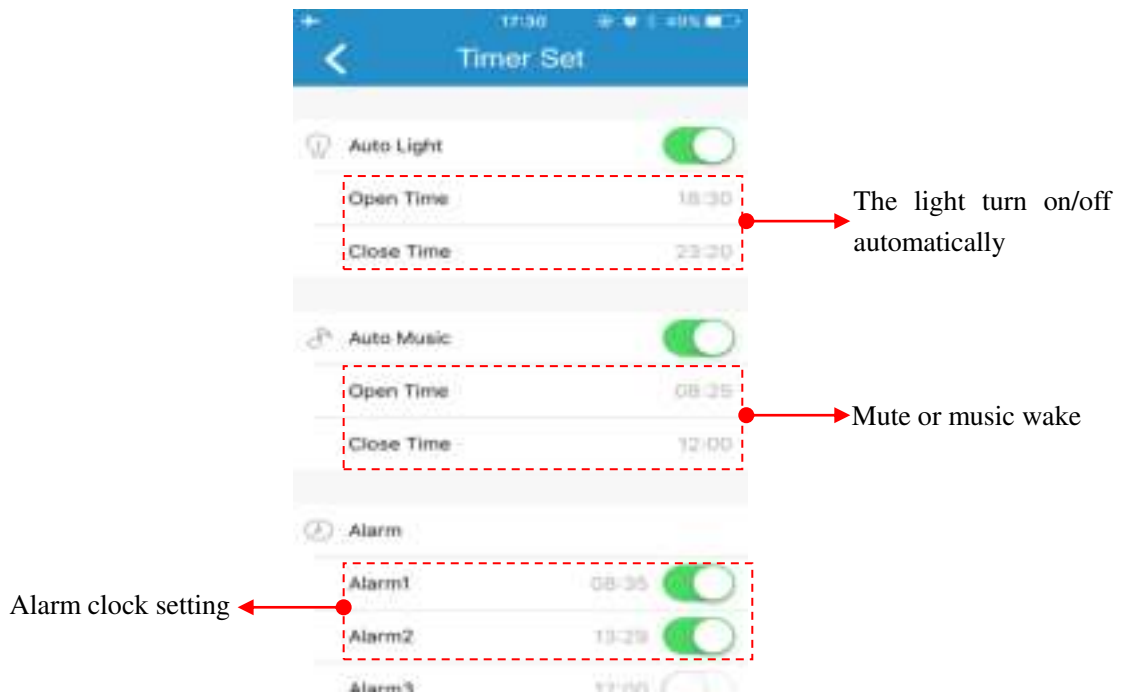
**Flashing:** stage-lighting effect, the light fast switching;

**Heartbeat:** fast switching just like the heartbeat;

**Music:** "musical rhythm" lighting effect, working when music playback, stop when pause.

#### E. Timer Setting

It is your close sleep assistant and smart alarm clock. The music and lamp turn on/off automatically.

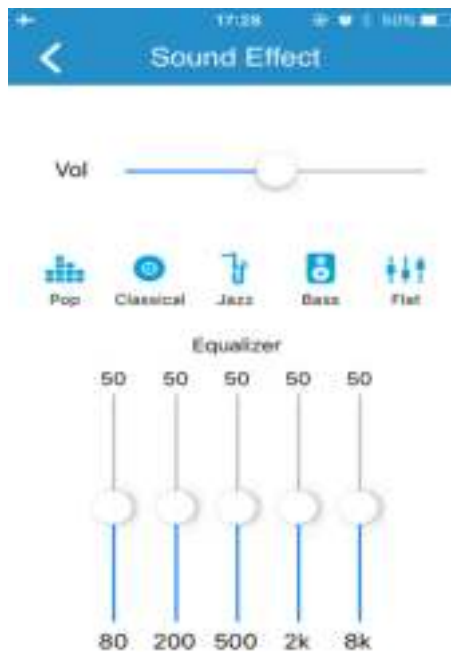


**Tips:** The function automatic work even when the Bluetooth disconnected.

**F.Sound Effect**

Sound effect setting: Pop, Classical, Jazz, Bass and Flat.

You can set your favorite **high pitch/low pitch** sound effect via tone equalizer.



### III.Specification

No.	Item	Parameter
	Input Voltage (V)	90-245V / 50-60HZ
	Input Power ( W)	<7W
	Power Factor ( PFC )	>90%
<b>LED light indicators</b>		
	Lamp Power (W)	<4W
	Lumen Ratio (K)	>400, 5W power consumption
	CRI	White>0.75; Warm white>0.85
	Color Temperature( IF)	3000-6500, Tolerance: $\pm 500K$
	Light Decay	<10%, T=25℃; RH=90%; H=20000
	Illumination Angle	>90°,According to customers request
	Dimming	PWM
<b>Audio amplifier indicators</b>		
	Audio Power (W)	3W, THD+N=10%, 1KHz
	Frequency Response	40HZ-18KHZ, Nonuniformity: $\pm 3dB$
	Audio Distortion (HTD+N)	<1%, P=1W;1KHz
	Signal to Noise Ratio( SNR)	>80dB,P=1W;A-weight
	Volume Control	APP
	Bluetooth Distance	>10m,Straight line distance and no obstacles
<b>The use of ambient temperature</b>		
	Working Temperature(℃)	-20-60
	Storage Temperature	-40-70

### IV.Note:

- ◆ If you can't search your Bluetooth bulb device or can't connect with the Bluetooth lamp device for a long time, please enter your phone "system settings" and connect again;
- ◆ If you can't connect to the device for a long time or other abnormal, please close the APP, then try to restart;
- ◆ Do not put the bulb in closed lampshade;
- ◆ Do not put the bulb in the place which is humid or has water;
- ◆ Keep using it under the power supply of 90V to 245V AC, 50-60Hz;
- ◆ This bulb is not a toy and keep it untouchable to children;
- ◆ Do not put the bulb on high-temperature surface;
- ◆ Do not open any sealing device for safety and according to Warranty Terms;
- ◆ Cool down the bulb before replacing it to avoid electric shock or burning.