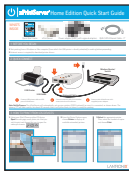




xPrintServer Home Edition Quick Start Guide

WHAT'S INSIDE



Quick Start Guide



xPrintServer



Power adapter (5VDC) with regional adapters

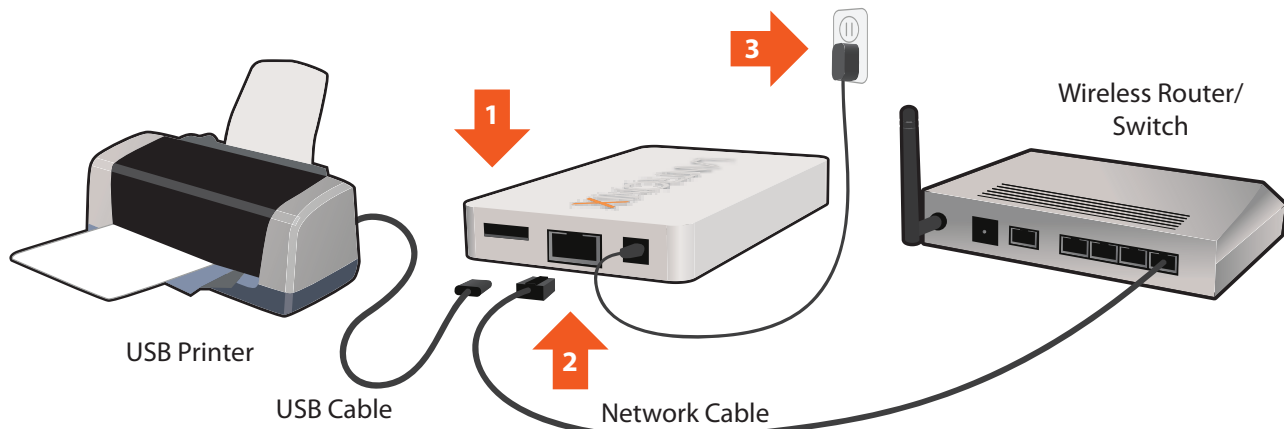


RJ45 CAT5 Ethernet Cable - 3'

1 BEFORE YOU BEGIN

1. Test printing from a Windows or Mac computer (from which the USB printer is directly attached) is working before proceeding.
2. Internet access is required to download printer drivers.

2 QUICK CONNECT

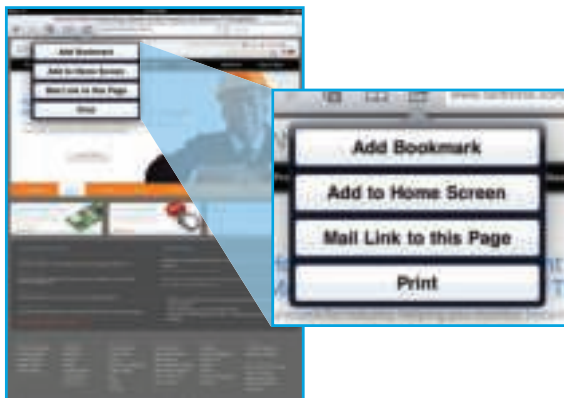


- 1 Connect USB printer cable to USB port of xPrintServer.
- 2 Connect network cable from wireless router/switch to xPrintServer.
- 3 Power on the xPrintServer with supplied power adapter.

Auto Set-Up Process: The xPrintServer will automatically set-up your printers (USB & network) as soon it is connected, as shown above. The glowing "X" will blink quickly for about 30 seconds, then it will pulse slowly to show it's ready for printing.

3 HOW TO PRINT FROM iOS DEVICES

1. Using your iPad, iPhone or other iOS device, **Open** the web page, email, photo, etc. that you wish to print and choose the icon to open the native print menu:



2. From the Printer Options menu, choose **Printer** to display all available networked printers.



3. **Select** the appropriate printer. Then, select the number of copies and choose **Print**.





xPrintServer Home Edition Quick Start Guide

4 HOW TO PRINT FROM MAC OS

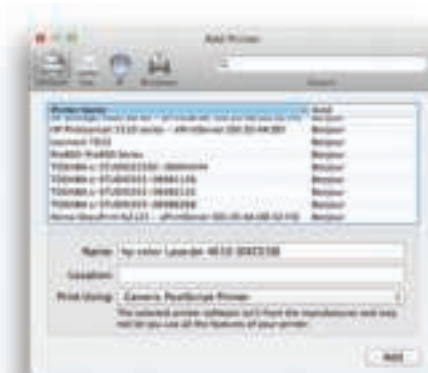
1. Go to **System Preferences, Hardware** and click on Print & Scan.



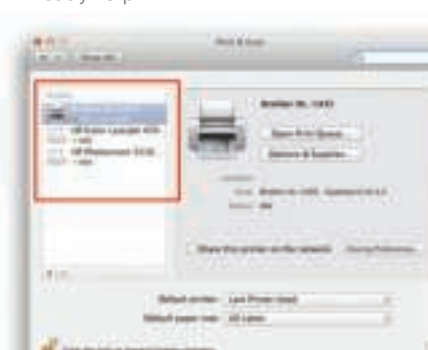
2. Click on the + button on the lower left corner



3. A list of printers appear. Select the printer you wish to add and click on the **Add** button.



4. The printer is now added in your available list of printers and is ready to print.






xPrintServer Home Edition Quick Start Guide

5 HOW TO PRINT FROM WINDOWS OS

BEFORE YOU BEGIN

Ensure the USB printer is working and the printer drivers are installed on the computer before proceeding.

INSTALL BONJOUR PRINT SERVICES

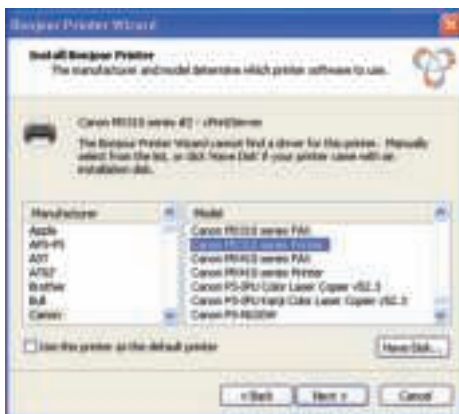
1. **Bonjour Print Services** is an Apple application that allows discovery of printers connected to the xPrintServer from a Windows PC. Go to the web address below to download and install Bonjour Print Services for Windows v2.0.2 or higher <http://support.apple.com/kb/DL999>
2. Follow the prompts to install Bonjour Print Services
3. Find the **Bonjour Printer Wizard**  shortcut on your **Desktop** or in the **Start/All programs** menu and click to launch

Instructions for Windows XP

4. The Bonjour Printer Wizard appears with a list of discovered printers. Highlight the printer you wish to install.

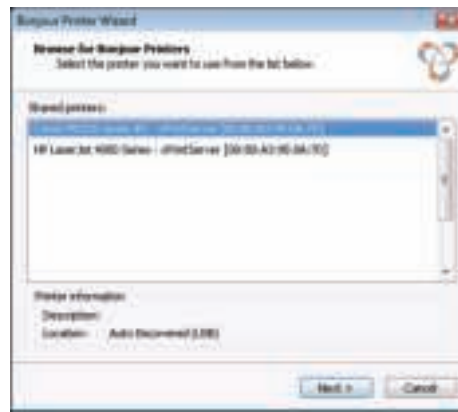


5. Search and select your printer by **manufacturer** and **model** number and click **Next**.



Instructions for Windows 7

4. The Bonjour Printer Wizard appears with a list of discovered printers. Highlight the printer you wish to install.



5. Search and select your printer by **manufacturer** and **model** number and click **Next**.



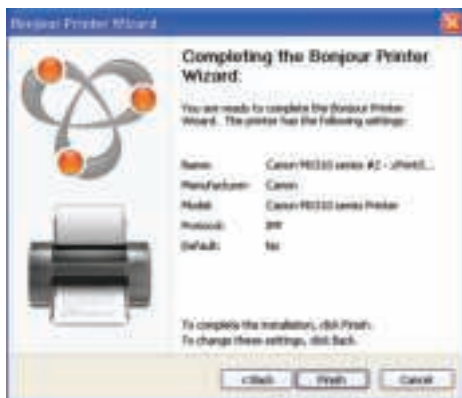


xPrintServer Home Edition Quick Start Guide

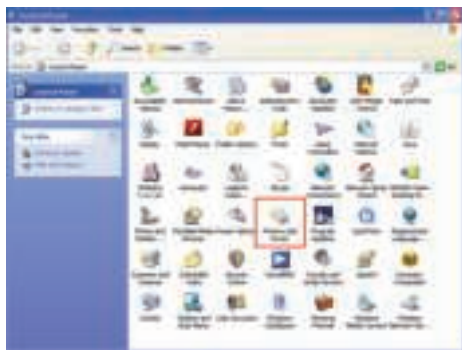
5 HOW TO PRINT FROM WINDOWS OS continued

Instructions for Windows XP

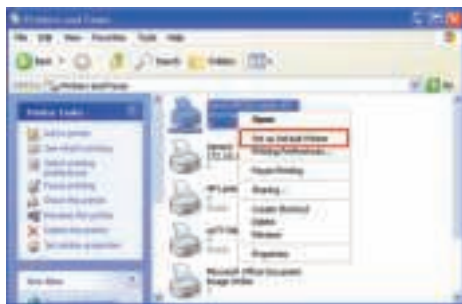
6. To complete the installation, click **Finish**.



7. If you wish to configure the printer as the default printer go to: **Start, Control Panel** and click on **Printers and Faxes**



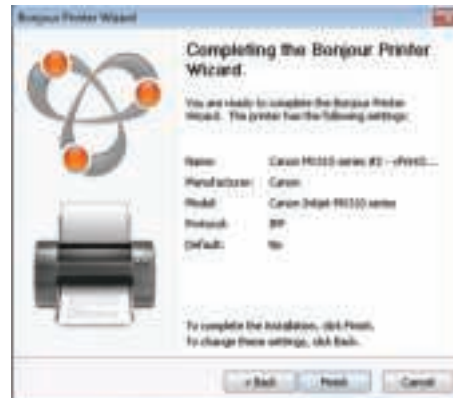
8. Select the printer and right click and select **Set as default printer**



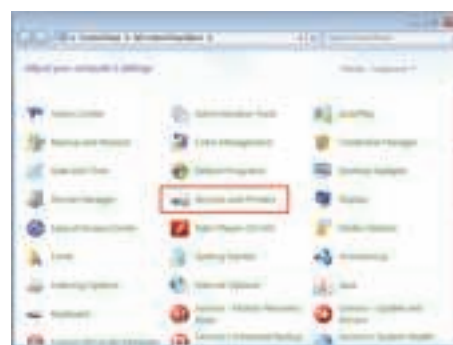
Congratulations! Add printer setup is now complete.

Instructions for Windows 7

6. To complete the installation, click **Finish**.



7. If you wish to configure the printer as the default printer go to: **Start, Control Panel** and click on **Devices and Printers**



8. Select the printer and right click and select **Set as default printer**



Congratulations! Add printer setup is now complete.

6 FOR CUSTOM CONFIGURATION & PRODUCT DOCUMENTATION

Using a web browser log into the xPrintServer admin interface at xPrintServer.local with USER ID = **admin** and PASSWORD = **PASS** (both case sensitive)

Contact Technical Support

For technical support queries, visit <http://www.lantronix.com/support> or call (800) 422-7044 Monday – Friday from 6:00 a.m. – 5:00 p.m. Pacific Time, excluding holidays.