



**Unifi**<sup>®</sup> **PROTECT**

1080p Indoor/Outdoor IP Camera with  
Infrared and 802.3af Support

Model: UVC-G3-Flex

QUICK START GUIDE

## Package Contents



G3 Flex Camera



Base Mount



Pole/Wall  
Mount



Outdoor  
Cover



Security Screw  
(Qty. 1)



Screws  
(Qty. 3)



Screw Anchors  
(Qty. 3)



Zip Ties  
(Qty. 2)

## Installation Requirements

- Phillips screwdriver
- Drill and 6 mm (1/4") bit for drywall anchors and 3 mm (1/8") for screws)
- Category 5e (or above) Ethernet cable



**Note:** When using the *Outdoor Cover*, use an Ethernet cable without a strain-relief boot on the connector. This will prevent unnecessary tension on the cable ends during installation.



Cable without a strain-relief boot



Cable with a strain-relief boot

## Outdoor Installation Requirements

**!** **IMPORTANT:** When installed outdoors, the camera must be installed in the upright position only.

- Mount the camera in the upright position only. Please see diagram below.
- Shielded Category 5e (or above) cabling with drain wire should be used for all outdoor wired Ethernet connections and should be grounded through the AC ground of the PoE.

We recommend that you protect your networks from harmful outdoor environments and destructive ESD events with industrial-grade, shielded Ethernet cable from Ubiquiti Networks. For more details, visit [ui.com/toughcable](http://ui.com/toughcable)

- Surge protection should be used for all outdoor installations. We recommend that you use two Ethernet Surge Protectors, model ETH-SP-G2, one near the UVC-G3-Flex and the other at the entry point to the building. The ETH-SP-G2 will absorb power surges and safely discharge them into the ground.

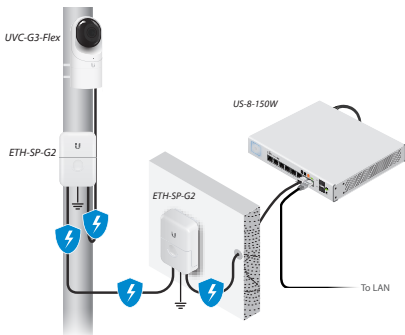


Diagram Showing Use of Ethernet Surge Protectors

## Before You Begin

The UVC G3 Flex camera is designed to work with Ubiquiti's new integrated management system, UniFi Protect.

UniFi Protect is a flexible and powerful IP video surveillance system that can manage UniFi Protect cameras and the UniFi Protect mobile app. The software is free from all hosting and licensing fees and comes pre-installed on UniFi's Cloud Key Gen2 Plus, model UCK-G2-PLUS.



*UniFi Cloud Key Gen2 Plus, model UCK-G2-PLUS*

For more information on UniFi Protect, visit us on the web at: **[unifi-protect.ui.com](https://unifi-protect.ui.com)**



**Note:** The UVC G3 Flex camera will also work with the UniFi Video® 3 controller software.

UniFi Video may be hosted on any of the following:

- UniFi Application Server, model UAS-XG
- UniFi NVR, model UVC-NVR-2TB
- A Linux or Windows computer



*UniFi Application Server, model UAS-XG*

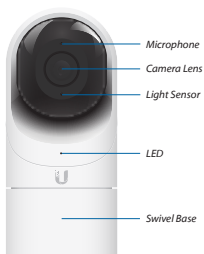


*UniFi NVR, model UVC-NVR-2TB*



**Note:** The latest UniFi Video 3 software, for Linux- or Windows-based computers, is available for free download at: **[ui.com/download/unifivideo](https://ui.com/download/unifivideo)**

## Hardware Overview



**Microphone** Microphone for recording audio

**Camera Lens** Lens for viewing/recording video

**Light Sensor** Sensor for ambient light detection

**LED** Status indicator for the following:

LED State	Status
Alternating White/Blue	Device is busy; do not touch or unplug it. This usually indicates that a process such as a firmware upgrade is taking place.
Steady Blue	Connected to Controller; Reset Button Pressed
Flashing Green	Disconnected from Controller
Steady White	Awaiting adoption

**Swivel Base** Allows you to change the viewing angle of the camera by adjusting left or right. Useful if mounted on a wall or other permanent surface.

## Bottom View



**Ethernet Port** The *Ethernet Port* is a 10/100 Mbps port used to supply power from a PoE 802.3af-compliant switch to the camera. The switch should be connected to a LAN running DHCP services and the UniFi Video Controller software.

**Reset Button** The *Reset Button* is used to reset the camera to factory defaults. Press and hold the *Reset Button* for more than 10 seconds while the camera is powered on.

## Mounting Options



Use the *Base Mount* by itself to install the G3 Flex camera on a desktop or tabletop. Out of the box, this mount comes preinstalled on the camera.



Use the *Base Mount* with two screws to install the G3 Flex camera on a wall (vertically).



Use the *Base Mount* with two screws to install the G3 Flex camera on a solid horizontal surface or ceiling.



Use the *Pole Mount* with two screws and the *Outdoor Cover* to install the G3 Flex camera on a wall or flat surface outdoors. The *Outdoor Cover* is not required for indoor installations.



Use the *Pole Mount* with two plastic zip ties and the *Outdoor Cover* to install the G3 Flex camera on an outdoor pole. The *Outdoor Cover* is not required for indoor pole installations.

## Additional Mounts Available

There are two additional mounts available for the G3 Flex: a *Ceiling Mount* and a *Pendant Mount*. Each is sold separately.



Use the optional *Ceiling Mount*, *Screw Kit*, and *Mount Cover* to install the G3 Flex camera on a solid horizontal surface or ceiling.



Use the optional *Ceiling Mount*, *Mount Cover*, and *Back Plate Assembly* to install the G3 Flex camera on a drop tile ceiling or horizontal surface where the interior side of the *Ceiling Mount* is accessible.




Use the *Pendant Mount* to install the G3 Flex camera onto a fitted 3/4" or 1.5" conduit mount or ceiling pipe.

## Installation

The UVC G3 Flex can be installed using one of the following methods:

- **Desktop** For installing on a flat surface such as a desktop or table/shelf; could be set up for temporary installations.
- **Wall/Ceiling** For installing in a secure location; used more for stationary or permanent installations.
- **Pole** For installing on a pole (indoor or outdoor).

Proceed to the appropriate section for your installation.

 **Note:** The viewing angle or surveillance coverage of the G3 Flex camera can be changed at any time.

- Tilt the lens up or down for vertical adjustment
- Turn the base left or right for horizontal adjustment





## Desktop

1. Remove the *Base Mount* from the base of the camera.




2. Insert one end of the RJ-45 cable into the *Ethernet Port* and the other end into a PoE 802.3af-compliant switch.



3. Attach the camera to the *Base Mount* by lining up the notches with the slots in the base of the camera. Press firmly together until the camera is secure.



 **Note:** Ensure the Ethernet cable is seated in the notch between the *Base Mount* and base of the camera.

4. Place the camera on a desk or table in its upright position.
5. Adjust the viewing angle or surveillance coverage as needed by following these steps:
  - Tilt the lens up or down to adjust the angle vertically
  - Turn the camera body left or right to adjust the angle horizontally



Installation complete.



*Desktop / Table Install*

## Wall/Ceiling

1. If the Ethernet cable is coming from the inside of a wall:
  - a. Drill or cut a hole in the wall and feed the Ethernet cable through the opening.
  - b. Pull the Ethernet cable forward and slide it through the opening in the mount.
2. Use the *Screws* and *Screw Anchors* to secure the *Base Mount* to the wall.



*Top Side Down Mounting*

or



*Vertical Upright Mounting*

3. Connect the Ethernet cable to the *Ethernet Port* in the base of the camera.



4. Attach the camera to the *Base Mount* by lining up the notches with the slots in the base of the camera. Press firmly together until the camera is secure.



*Vertical mounting on ceiling*

or



*Vertical mounting on a wall*

Installation complete.




*Horizontal Surface / Ceiling with Base Mount*



*Indoor Wall with Base Mount*

## Pole


-  **Note:** If you are mounting the camera outdoors, it must be installed in the upright position to prevent water from getting into the base of the camera. Use the *Outdoor Cover* for additional protection from moisture.

1. Attach the *Pole Mount* to a pole using the included *Zip Ties*.



2. Insert and pull an Ethernet cable through the back port opening of the *Outdoor Cover*.



-  **Note:** When using the *Outdoor Cover*, use an Ethernet cable without strain-relief boots on the connector. This will prevent unnecessary tension on the cable ends.

3. Connect the Ethernet cable to the *Ethernet Port* on the G3 Flex camera.



4. Attach the camera to the *Outdoor Cover* by lining up the notches with the slots on the bottom of the camera. Press firmly until the camera snaps on.



5. Attach the camera to the *Pole Mount*:
  - a. Press the camera against the *Pole Mount* and line up the notches on the mount with the slots on the bottom of the camera.
  - b. Slide the camera down onto the *Pole Mount* until it is secure.



**Note:** When using the *Outdoor Cover*, use an Ethernet cable without strain-relief boots on the connector. This will prevent unnecessary tension on the cable ends.

6. Use a phillips screwdriver to install the *Security Screw* through the *Outdoor Cover* and into the base of the camera. This secures the camera to the mount.



7. Adjust the camera to the desired viewing angle by:
- Tilting the lens up or down for vertical adjustment
  - Turn the camera body left or right to adjust the angle horizontally



Installation is complete.



*Pole Mount Install*

## Setting Up UniFi Protect via App

Download and install the UniFi Protect app to configure the UVC-G3-Flex.



**Note:** When you first launch UniFi Protect, the app will prompt you to enable Bluetooth and other relevant features necessary to provide the best user experience possible. Please allow these features and permissions to take place for proper app functionality.

1. Launch the UniFi Protect app.





2. Tap the side menu in the upper-left corner of the app to access additional options.
3. Tap **Add Cameras** to add a new camera.



**Note:** If setting up multiple cameras, UniFi Protect allows you to add more than one camera during the setup process.

4. When the **Select cameras** screen appears, tap each camera in the list you would like to add to your UniFi Protect system. Tap **Set up cameras** to continue.



5. A *Name your camera* screen appears individually for each camera you selected in step 4. Enter a name for each camera and tap **Next**, repeating this process until all cameras have been named.



6. If necessary, any camera requiring a firmware upgrade will update at this time. Once completed, a live view of each camera will display in the app.



## Specifications

UVC-G3-Flex	
Dimensions	Ø 107.5 x 48 x 48 mm (Ø 4.23 x 1.89 x 1.89")
Weight	170 g (5.99 oz)
Sensor	1/2.7" 2-Megapixel HDR Sensor
Lens	EFL 4mm / f2.0
Viewing Angle with Lens Distortion Correction (LDC) LDC Off LDC On	87.4° (H), 47° (V), 104° (D) 80° (H), 46° (V), 92° (D)
Night Mode	IR LEDs with Mechanical ICR Filter
Video Compression	H.264
Resolution	1080p FHD (1920 x 1080)
Maximum Frame Rate	25 FPS
Image Settings	Brightness, Contrast, Sharpness, Saturation, Noise Reduction, 50/60 Hz
Microphone	Yes
Management Interface	UniFi Protect; UniFi Video
Networking Interface	(1) 10/100 Ethernet Port
Max. Power Consumption	4W
Power Method	802.3af PoE
Power Supply	802.3af PoE Switch Port
Mounting	Table, Wall (Indoor/Outdoor), Pole
Operating Temperature	-20 to 50° C (-4 to 122° F)
Operating Humidity	20 to 90% Noncondensing

## Safety Notices

1. Read, follow, and keep these instructions.
2. Heed all warnings.
3. Only use attachments/accessories specified by the manufacturer.



**WARNING:** Hot Surface. Do not touch.



**WARNING:** Do not use this product in a location that can be submerged by water.



**WARNING:** Avoid using this product during an electrical storm. There may be a remote risk of electric shock from lightning.

## Electrical Safety Information

1. Compliance is required with respect to voltage, frequency, and current requirements indicated on the manufacturer's label. Connection to a different power source than those specified may result in improper operation, damage to the equipment or pose a fire hazard if the limitations are not followed.
2. There are no operator serviceable parts inside this equipment. Service should be provided only by a qualified service technician.

## Limited Warranty

### **[ui.com/support/warranty](http://ui.com/support/warranty)**

The limited warranty requires the use of arbitration to resolve disputes on an individual basis, and, where applicable, specify arbitration instead of jury trials or class actions.

## Compliance

### FCC

Changes or modifications not expressly approved by the party responsible for compliance could void the user's authority to operate the equipment.

This device complies with Part 15 of the FCC Rules. Operation is subject to the following two conditions:

1. This device may not cause harmful interference, and
2. This device must accept any interference received, including interference that may cause undesired operation.

NOTE: This equipment has been tested and found to comply with the limits for a Class A digital device, pursuant to part 15 of the FCC Rules. These limits are designed to provide reasonable protection against harmful interference when the equipment is operated in a commercial environment. This equipment generates, uses, and can radiate radio frequency energy and, if not installed and used in accordance with the instruction manual, may cause harmful interference to radio communications. Operations of this equipment in a residential area is likely to cause harmful interference in which case the user will be required to correct the interference at his own expense.

## Industry Canada

### **CAN ICES-3(A)/NMB-3(A)**

This Class A digital apparatus complies with Canadian ICES-003.

### **CAN ICES-3(A)/NMB-3(A)**

Cet appareil numérique de la classe A est conforme à la norme NMB-003 du Canada.

## CE Marking

CE marking on this product represents the product is in compliance with all directives that are applicable to it.



## RoHS/WEEE Compliance Statement



### English

European Directive 2012/19/EU requires that the equipment bearing this symbol on the product and/or its packaging must not be disposed of with unsorted municipal waste. The symbol indicates that this product should be disposed of separately from regular household waste streams. It is your responsibility to dispose of this and other electric and electronic equipment via designated collection facilities appointed by the government or local authorities. Correct disposal and recycling will help prevent potential negative consequences to the environment and human health. For more detailed information about the disposal of your old equipment, please contact your local authorities, waste disposal service, or the shop where you purchased the product.

### Deutsch

Die Europäische Richtlinie 2012/19/EU verlangt, dass technische Ausrüstung, die direkt am Gerät und/oder an der Verpackung mit diesem Symbol versehen ist, nicht zusammen mit unsortiertem Gemeindeabfall entsorgt werden darf. Das Symbol weist darauf hin, dass das Produkt von regulärem Haushaltsmüll getrennt entsorgt werden sollte. Es liegt in Ihrer Verantwortung, dieses Gerät und andere elektrische und elektronische Geräte über die dafür zuständigen und von der Regierung oder örtlichen Behörden dazu bestimmten Sammelstellen zu entsorgen. Ordnungsgemäßes Entsorgen und Recyceln trägt dazu bei, potentielle negative Folgen für Umwelt und die menschliche Gesundheit zu vermeiden. Wenn Sie weitere Informationen zur Entsorgung Ihrer Altgeräte benötigen, wenden Sie sich bitte an die örtlichen Behörden oder städtischen Entsorgungsdienste oder an den Händler, bei dem Sie das Produkt erworben haben.

## Español

La Directiva 2012/19/UE exige que los equipos que lleven este símbolo en el propio aparato y/o en su embalaje no deben eliminarse junto con otros residuos urbanos no seleccionados. El símbolo indica que el producto en cuestión debe separarse de los residuos domésticos convencionales con vistas a su eliminación. Es responsabilidad suya desechar este y cualesquiera otros aparatos eléctricos y electrónicos a través de los puntos de recogida que ponen a su disposición el gobierno y las autoridades locales. Al desechar y reciclar correctamente estos aparatos estará contribuyendo a evitar posibles consecuencias negativas para el medio ambiente y la salud de las personas. Si desea obtener información más detallada sobre la eliminación segura de su aparato usado, consulte a las autoridades locales, al servicio de recogida y eliminación de residuos de su zona o pregunte en la tienda donde adquirió el producto.

## Français

La directive européenne 2012/19/UE exige que l'équipement sur lequel est apposé ce symbole sur le produit et/ou son emballage ne soit pas jeté avec les autres ordures ménagères. Ce symbole indique que le produit doit être éliminé dans un circuit distinct de celui pour les déchets des ménages. Il est de votre responsabilité de jeter ce matériel ainsi que tout autre matériel électrique ou électronique par les moyens de collecte indiqués par le gouvernement et les pouvoirs publics des collectivités territoriales. L'élimination et le recyclage en bonne et due forme ont pour but de lutter contre l'impact néfaste potentiel de ce type de produits sur l'environnement et la santé publique. Pour plus d'informations sur le mode d'élimination de votre ancien équipement, veuillez prendre contact avec les pouvoirs publics locaux, le service de traitement des déchets, ou l'endroit où vous avez acheté le produit.

## Italiano

La direttiva europea 2012/19/UE richiede che le apparecchiature contrassegnate con questo simbolo sul prodotto e/o sull'imballaggio non siano smaltite insieme ai rifiuti urbani non differenziati. Il simbolo indica che questo prodotto non deve essere smaltito insieme ai normali rifiuti Flexstici. È responsabilità del proprietario smaltire sia questi prodotti sia le altre apparecchiature elettriche ed elettroniche mediante le specifiche strutture di raccolta indicate dal governo o dagli enti pubblici locali. Il corretto smaltimento ed il riciclaggio aiuteranno a prevenire conseguenze potenzialmente negative per l'ambiente e per la salute dell'essere umano. Per ricevere informazioni più dettagliate circa lo smaltimento delle vecchie apparecchiature in Vostro possesso, Vi invitiamo a contattare gli enti pubblici di competenza, il servizio di smaltimento rifiuti o il negozio nel quale avete acquistato il prodotto.

# Declaration of Conformity

**Български [Bulgarian]** С настоящото UBIQUITI декларира, че този тип радиосъоръжение UVC-G3-Flex е в съответствие с Директива 2014/53/ЕС. Цялостният текст на ЕС декларацията за съответствие може да се намери на следния интернет адрес: [www.ui.com/compliance](http://www.ui.com/compliance)

**Hrvatski [Croatian]** UBIQUITI ovime izjavljuje da je radijska oprema tipa UVC-G3-Flex u skladu s Direktivom 2014/53/EU. Cjeloviti tekst EU izjave o sukladnosti dostupan je na sljedećoj internetskoj adresi: [www.ui.com/compliance](http://www.ui.com/compliance)

**Čeština [Czech]** Tímto UBIQUITI prohlašuje, že typ rádiového zařízení UVC-G3-Flex je v souladu se směrnicí 2014/53/EU. Úplné znění EU prohlášení o shodě je k dispozici na této internetové adrese: [www.ui.com/compliance](http://www.ui.com/compliance)

**Dansk [Danish]** Hermed erklærer UBIQUITI, at radioudstyrstypen UVC-G3-Flex er i overensstemmelse med direktiv 2014/53/EU. EU-overensstemmelseserklæringens fulde tekst kan findes på følgende internetadresse: [www.ui.com/compliance](http://www.ui.com/compliance)

**Nederlands [Dutch]** Hierbij verklaar ik, UBIQUITI, dat het type radioapparatuur UVC-G3-Flex conform is met Richtlijn 2014/53/EU. De volledige tekst van de EU-conformiteitsverklaring kan worden geraadpleegd op het volgende internetadres: [www.ui.com/compliance](http://www.ui.com/compliance)

**English** Hereby, UBIQUITI declares that the radio equipment type UVC-G3-Flex is in compliance with Directive 2014/53/EU. The full text of the EU declaration of conformity is available at the following internet address: [www.ui.com/compliance](http://www.ui.com/compliance)

**Eesti keel [Estonian]** Käesolevaga deklareerib UBIQUITI, et käesolev raadioseadme tüüp UVC-G3-Flex vastab direktiivi 2014/53/EU nõuetele. ELi vastavusdeklaratsiooni täielik tekst on kättesaadav järgmisel internetiaadressil: [www.ui.com/compliance](http://www.ui.com/compliance)

**Suomi [Finnish]** UBIQUITI vakuuttaa, että radiolaitetyypin UVC-G3-Flex on direktiivin 2014/53/EU mukainen. EU-vaatimustenmukaisuusvakuutuksen täysimittainen teksti on saatavilla seuraavassa internetosoitteessa: [www.ui.com/compliance](http://www.ui.com/compliance)

**Français [French]** Le soussigné, UBIQUITI, déclare que l'équipement radioélectrique du type UVC-G3-Flex est conforme à la directive 2014/53/UE. Le texte complet de la déclaration UE de conformité est disponible à l'adresse internet suivante: [www.ui.com/compliance](http://www.ui.com/compliance)

**Deutsch [German]** Hiermit erkläre UBIQUITI, dass der Funkanlagentyp UVC-G3-Flex der Richtlinie 2014/53/EU entspricht. Der vollständige Text der EU-Konformitätserklärung ist unter der folgenden Internetadresse verfügbar: [www.ui.com/compliance](http://www.ui.com/compliance)

**Ελληνικά [Greek]** Με την παρούσα ο/η UBIQUITI, δηλώνει ότι ο ραδιοεξοπλισμός UVC-G3-Flex πληροί την οδηγία 2014/53/ΕΕ. Το πλήρες κείμενο της δήλωσης συμμόρφωσης ΕΕ διατίθεται στην ακόλουθη ιστοσελίδα στο διαδίκτυο: [www.ui.com/compliance](http://www.ui.com/compliance)

**Magyar [Hungarian]** UBIQUITI igazolja, hogy a UVC-G3-Flex típusú rádióberendezés megfelel a 2014/53/EU irányelvnek. Az EU-megfelelési nyilatkozat teljes szövege elérhető a következő internetes címen: [www.ui.com/compliance](http://www.ui.com/compliance)

**Íslenska [Icelandic]** Hér með lýsir UBIQUITI yfir því að UVC-G3-Flex er í samræmi við grunnkröfur og aðrar kröfur, sem gerðar eru í tilskipun 2014/53/EU. Fullur texti ESB samræmisýfirlýsing er að finna á eftirfarandi netfangi: [www.ui.com/compliance](http://www.ui.com/compliance)

**Italiano [Italian]** Il fabbricante, UBIQUITI, dichiara che il tipo di apparecchiatura radio UVC-G3-Flex è conforme alla direttiva 2014/53/UE. Il testo completo della dichiarazione di conformità UE è disponibile al seguente indirizzo Internet: [www.ui.com/compliance](http://www.ui.com/compliance)

**Latviešu valoda [Latvian]** Ar šo UBIQUITI deklarē, ka radioiekārta UVC-G3-Flex atbilst Direktīvai 2014/53/ES. Pilns ES atbilstības deklarācijas teksts ir pieejams šādā interneta vietnē: [www.ui.com/compliance](http://www.ui.com/compliance)



[Lietuvių kalba \[Lithuanian\]](#) Aš, UBIQUITI, patvirtinu, kad radijo įrenginių tipas UVC-G3-Flex atitinka Direktyvą 2014/53/ES. Visas ES atitikties deklaracijos tekstas prieinamas šiuo interneto adresu:

[www.ui.com/compliance](http://www.ui.com/compliance)

[Malti \[Maltese\]](#) B'dan, UBIQUITI, niddikjara li dan it-tip ta' tagħmir tar-radju UVC-G3-Flex huwa konformi mad-Direttiva 2014/53/UE. Id-dikjarazzjoni tal-konformità tista' tiġi kkonsultata minn

[www.ui.com/compliance](http://www.ui.com/compliance)

[Norsk \[Norwegian\]](#) UBIQUITI erklærer herved at utstyret UVC-G3-Flex er i samsvar med de grunnleggende krav og øvrige relevante krav i direktiv 2014/53/EU. Den fulle teksten til EU-samsvarserklæringen er tilgjengelig på følgende internettadresse: [www.ui.com/compliance](http://www.ui.com/compliance)

[Polski \[Polish\]](#) UBIQUITI niniejszym oświadcza, że typ urządzenia radiowego UVC-G3-Flex jest zgodny z dyrektywą 2014/53/UE. Pełny tekst deklaracji zgodności UE jest dostępny pod następującym adresem internetowym: [www.ui.com/compliance](http://www.ui.com/compliance)

[Português \[Portuguese\]](#) O(a) abaixo assinado(a) UBIQUITI declara que o presente tipo de equipamento de rádio UVC-G3-Flex está em conformidade com a Diretiva 2014/53/UE. O texto integral da declaração de conformidade está disponível no seguinte endereço de Internet:

[www.ui.com/compliance](http://www.ui.com/compliance)

[Română \[Romanian\]](#) Prin prezenta, UBIQUITI declară că tipul de echipamente radio UVC-G3-Flex este în conformitate cu Directiva 2014/53/UE. Textul integral al declarației UE de conformitate este disponibil la următoarea adresă internet: [www.ui.com/compliance](http://www.ui.com/compliance)

[Slovenčina \[Slovak\]](#) UBIQUITI týmto vyhlasuje, že rádiové zariadenie typu UVC-G3-Flex je v súlade so smernicou 2014/53/EÚ. Úplné EÚ vyhlásenie o zhode je k dispozícii na tejto internetovej adrese:

[www.ui.com/compliance](http://www.ui.com/compliance)

## Online Resources

Support [help.ui.com](http://help.ui.com)

Community [community.ui.com](http://community.ui.com)

Downloads [downloads.ui.com](http://downloads.ui.com)



[www.ui.com](http://www.ui.com)

©2018-2019 Ubiquiti Inc. All rights reserved. Ubiquiti, Ubiquiti Networks, the Ubiquiti U logo, the Ubiquiti beam logo, and UniFi Protect are trademarks or registered trademarks of Ubiquiti Networks, Inc. in the United States and in other countries. Apple, the Apple logo, and iPhone are trademarks of Apple Inc., registered in the U.S. and other countries. App Store is a service mark of Apple Inc. Android, Google, Google Play, the Google Play logo and other marks are trademarks of Google Inc. All other trademarks are the property of their respective owners.

AJ071219