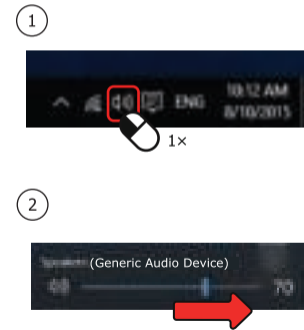


5. Installation - Windows 10/8/7

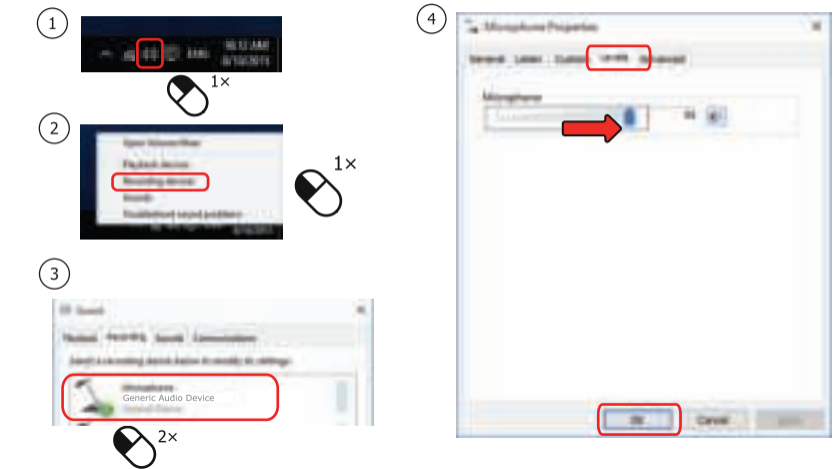
Windows 8



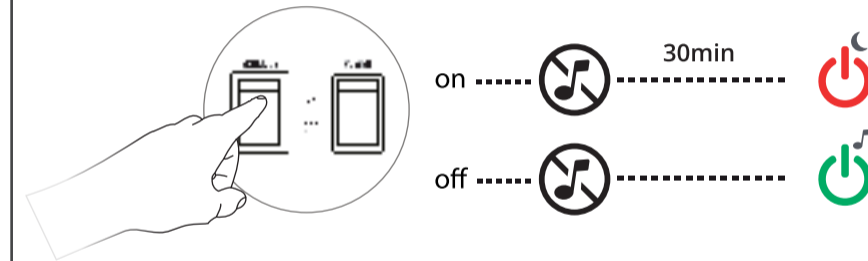
Windows 10/7



6. Installation - Windows 10/8/7



5. ECO Mode



Frequently asked questions www.trust.com/22197/faq

Trust International BV, Laan van Barcelona 600, 3317DD, Dordrecht, NL © 18-05-2017 Trust International B.V. All rights reserved.

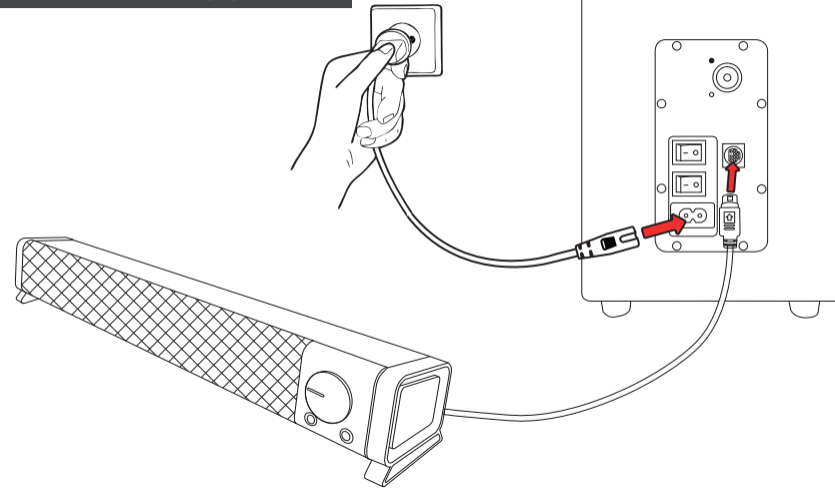
Trust

SOUNDBAR

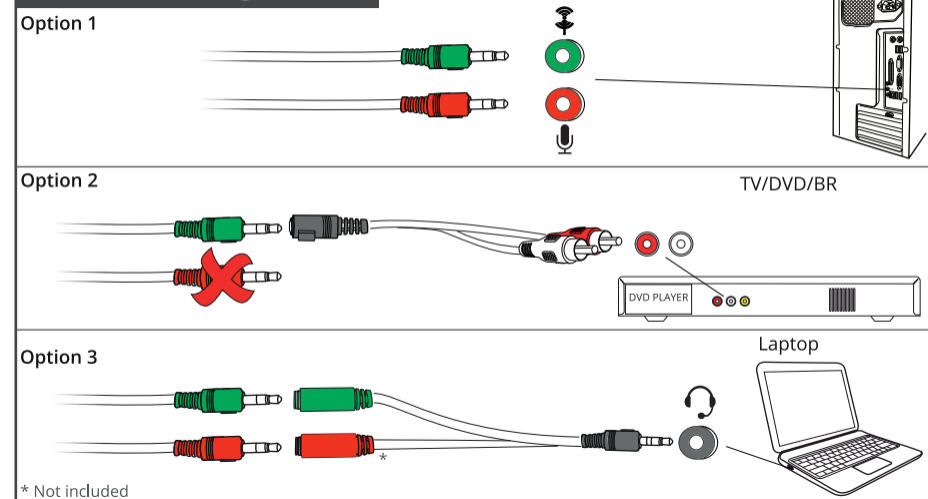
ASTO 2.1

Quick Installation Guide

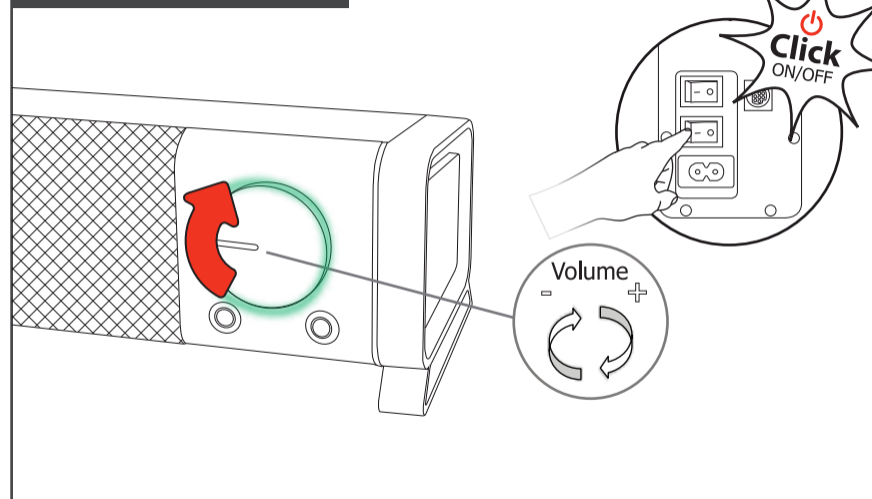
1. Connecting power



2. Connecting audio



3. Volume control



4. Other connections

