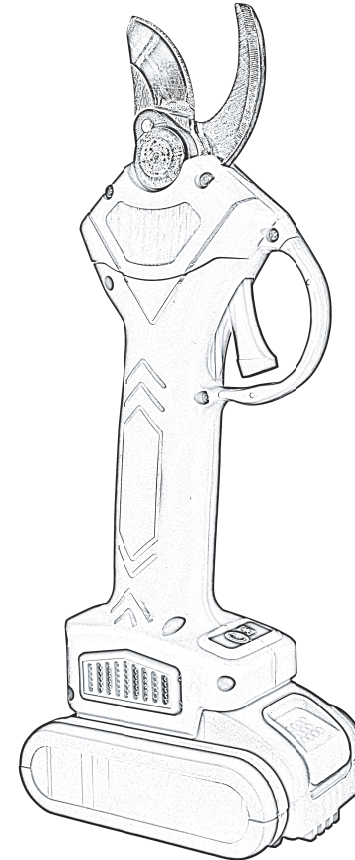


3. Do not immerse the pruning shear, battery or charger in any liquid.
4. Follow instructions as given for proper use of the pruning shear, do not use the pruning shear when the tool itself, battery or charger is damaged.
5. Do not use the pruning shear if it could not operate or shut down properly, send for servicing immediately. It is dangerous to use the pruning shear when the tool could not operate or shut down properly.
6. Please ensure the power pruner is powered OFF during any adjustment, changing accessories or storage. This protective measure aims to reduce the risk of accidental pruning shear activation.
7. Please ensure the blades are closed when not in use, storage of the pruning shear must keep out of reach from CHILDREN, do not allow any person who is not familiar with the pruner operation or instruction to use the pruning shear, it is dangerous to use the pruning shear without proper training and understanding.
8. The use of the pruning shear must comply with instructions stated in this manual and methods of use as well as taking in considerations of the working environment and nature of work undertaken. The use of the pruning shear not within its stated capability and specifications is dangerous.
9. Remove all dirt from the moving and fixed blades after each use, thereafter apply lubricant on the blade side where both moving and fixed blade contact. This will ensure the blades are maintained in good conditions and reduce resistance during use prolonging the pruner and blade lifespan.

● Usage and Care for Battery

1. Do not charge battery with ambient temperature below 32。 F(0oC) or above 113° F(45°C) .
2. Please ensure the battery is switched off before connecting the power cord to the battery.
3. Only use battery charger as supplied together with the pruning shear, the use of any other charger not matching to the charging specification of the battery may cause fire.
4. Items such as paper clips, coins, keys, nails, screws or any other conductive items must be kept away from battery when not in use.
5. Do not disassemble the battery.
6. Do not short-circuit the battery.
7. Do not use the battery beside heat source.
8. Do not put the battery in fire or in water.
9. Do not charge the battery near fire or under direct sunlight
10. Do not insert nail into the battery, hammer the battery, stomp the battery, throw the battery or any other form of shocks to the battery.
11. Do not use battery that is damaged or deformed.
12. Do not perform soldering or welding on the battery.
13. Do not reverse direction of charging battery, reverse polarity of connections or excessive discharge of battery.
14. Do not connect the battery to charging outlets or car cigarette lighter socket.
15. Do not use the battery on equipment other than the designated pruning shear.
16. Do not direct contact with lithium cells in the battery.
17. Do not place the battery in microwave, high temperature or high pressured vessel.
18. Do not use the battery that is leaking.

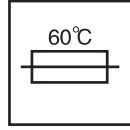
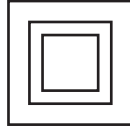
Lithium pruning Shears



Product Using Manual



Product Overview



Note

1. Please read through the manual carefully.
2. Battery can only be charged indoors.
3. Double insulation, grounding not required.
4. Fail-safe transformer charger.
5. Battery charging will automatically cut off when overheating occurs.
6. Dispose battery charger separately from household waste.
7. Dispose battery separately from household waste.

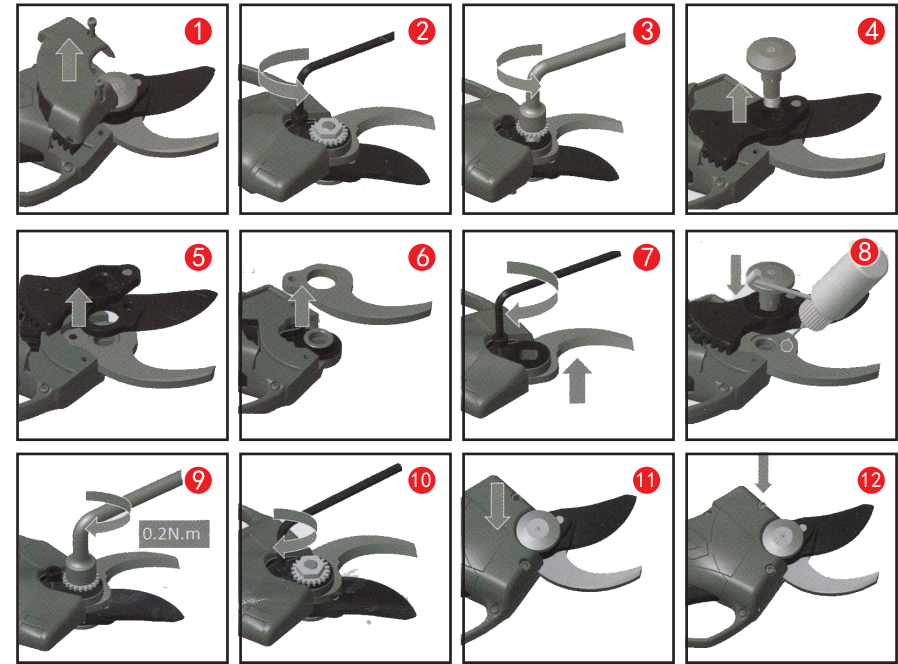
Product Description

This product is a battery-driven electric pruning shear—comprises a fixed blade, a movable blade, lithium battery, battery charge-power cord, work vest, tool box and other components. designed for cutting or trimming or less branches in fruit orchards, vineyards, etc. Simple and easy to operate, it also has 8–10 times the efficiency of traditional manual pruners. Pruning quality is significantly higher as compared to manual pruners.

Technical Specifications

Basic information of electric	
Operating voltage	21V
Lithium battery	21V 2AH
Charging voltage	AC100V~240V
Charging duration	1-1.5hours
Operating duration	2-3 hours
Rated power	100W
Max power	800W
Total weight	1000g

Cutting range	
Diameter	25mm Vine branches
Operating Temperature	14° F-149° F / -10°C-65°C



Fixed and movable blades can be replaced individually; do not worry about the size of the replacement blade aperture, the opening will automatically return to normal size during power ON after completing blade replacement.



Operation Precautions

Usage and Care for Pruning Shear

1. Do not cut branches beyond the specified diameter indicated, do not cut hard items such as metals, stone or any other non-plant materials. If the blades are worn or damaged, please replace the blades.
2. Keep the pruning shear clean, use a clean cloth to clean the pruning shear, battery and charger (do not use any abrasive or solvent-based cleaning agent), use a soft brush or a dry cloth to clean the dust on the pruning shear head.